

# Charming Home in Cleveland Bolivar County, MS



1009 Avery Street Cleveland, MS 38732

\$299,900

Welcome to this charming four-bedroom, three-bathroom home in Cleveland, Bolivar County, MS, offering 2,850 sq ft of comfortable living space. Perfectly designed for both functionality and relaxation, this home features two spacious living areas, ideal for entertaining or enjoying family time. The sizeable primary bedroom is complete with a generous walk-in closet. An additional office/workout room offers plenty of room for family and guests and a home office. The backyard has a lovely patio, providing plenty of outdoor activities and relaxation space. The attached carport adds convenience and protection for your vehicles, while the new roof provides peace of mind for future generations. Call Sarah Reese today for your private showing!

**Directions from Hwy 8 & Hwy 61 in Cleveland, MS:** Travel West on Hwy 8 for approximately 1.0 miles. Turn left onto N. Fifth Avenue and travel 0.8 miles. Turn right onto Avery St. The house will be on the left. [Click for Google Maps](#)



SARAH REESE  
**WRIGHT**

REALTOR®

Office: 662.441.2500

Cell: 662.641.6696

SarahReese@TomSmithLand.com



Expect More. Get More.

A Real Estate Expert You Can Trust

TomSmithLandandHomes.com

Information is believed to be accurate but not guaranteed.





## A Real Estate Expert *You Can Trust!*

SARAH REESE  
**WRIGHT**

REALTOR®

O: 662.441.2500 C: 662.641.6696

SarahReese@TomSmithLand.com

TomSmithLandandHomes.com



Expect More. Get More.



Information is believed to be accurate but not guaranteed.



# A Real Estate Expert You Can Trust!

SARAH REESE  
**WRIGHT**  
REALTOR®

O: 662.441.2500 C: 662.641.6696  
SarahReese@TomSmithLand.com  
TomSmithLandandHomes.com

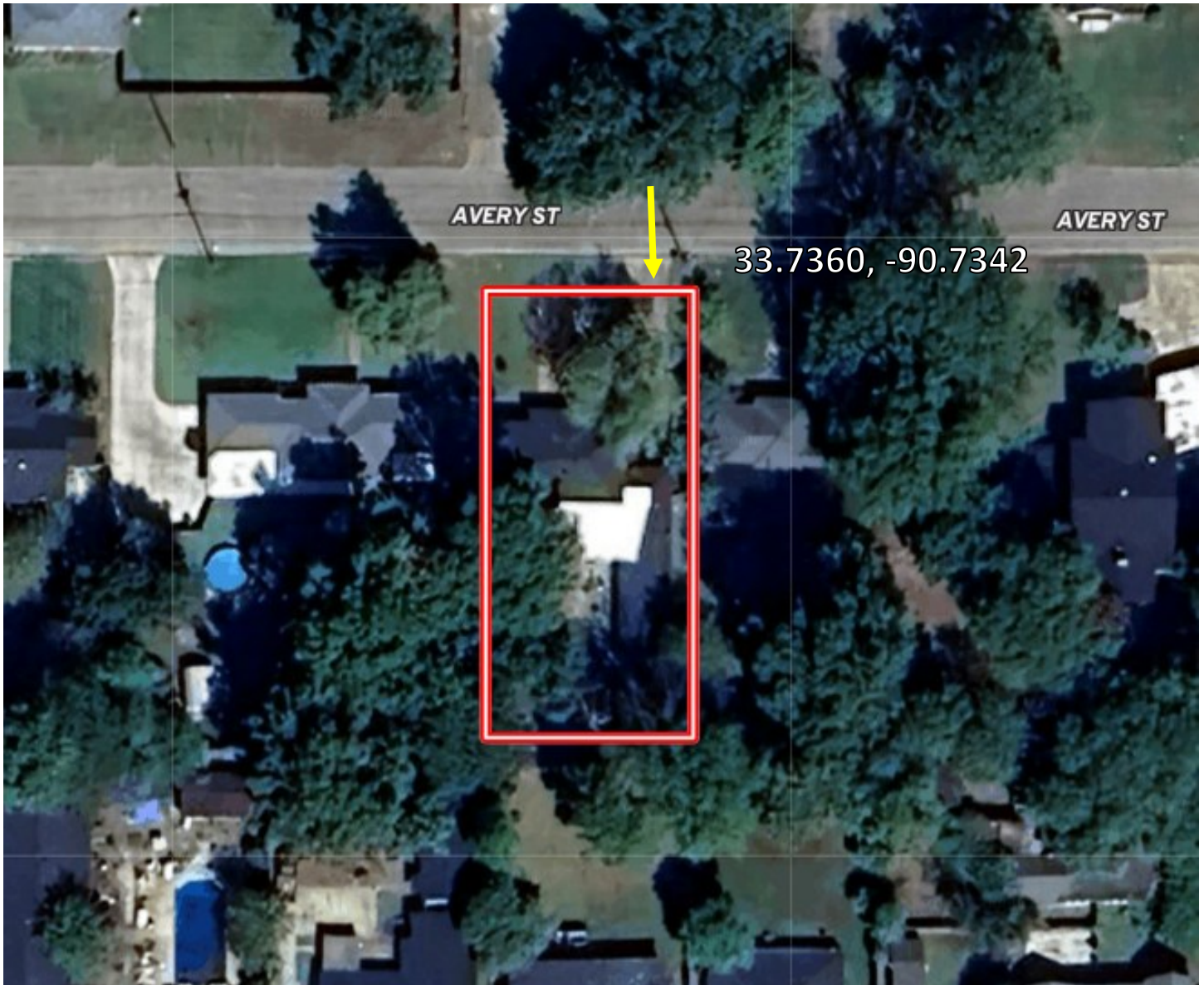


Expect More. Get More.



Information is believed to be accurate but not guaranteed.

# AERIAL MAP



[Click for Interactive Map](#)

**A Real Estate Expert**  
*You Can Trust!*

**SARAH REESE**  
**WRIGHT**

REALTOR®

O: 662.441.2500 C: 662.641.6696

SarahReese@TomSmithLand.com

TomSmithLandandHomes.com

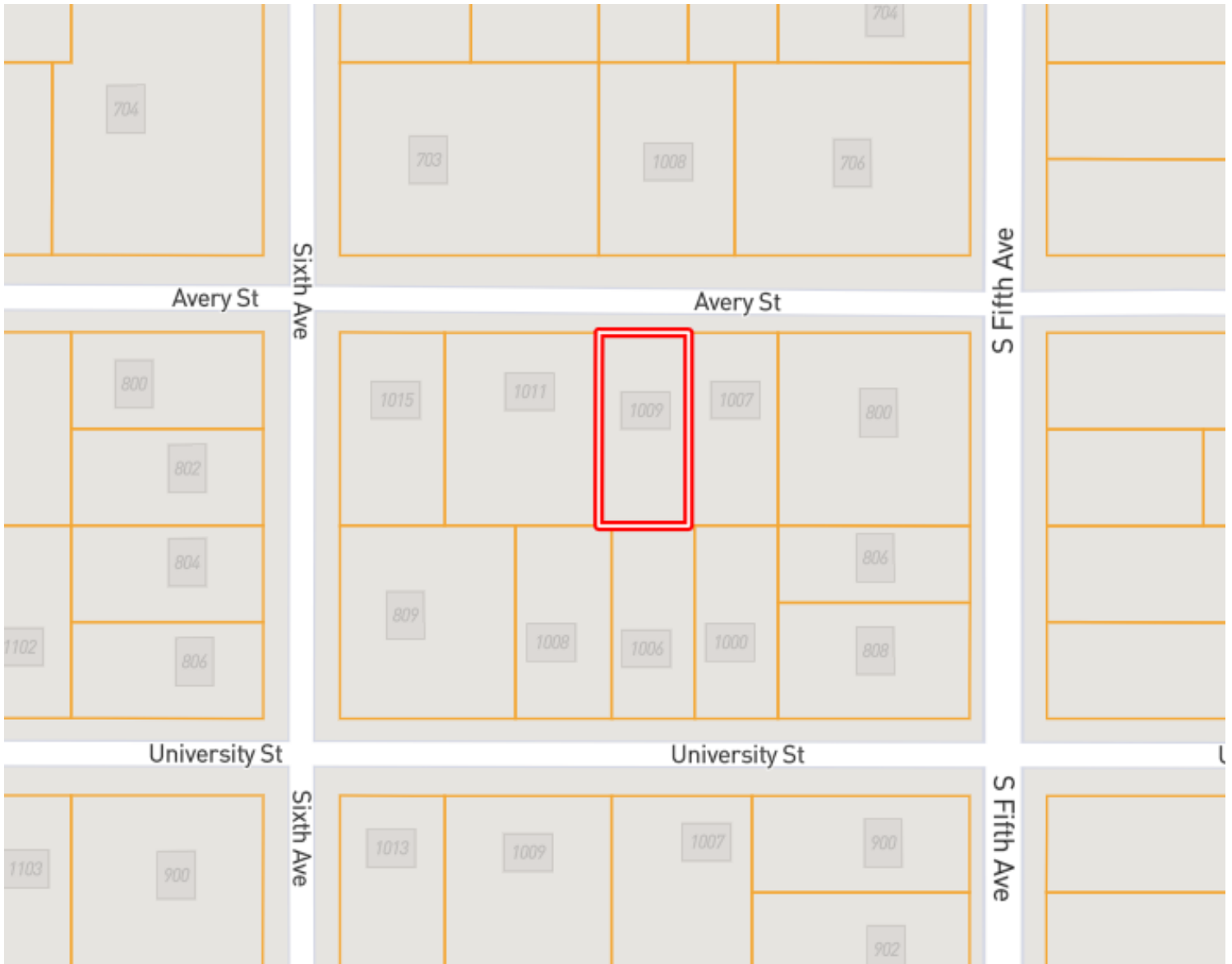


Expect More. Get More.

Information is believed to be accurate but not guaranteed.



# OWNERSHIP MAP



A Real Estate Expert  
*You Can Trust!*

SARAH REESE  
**WRIGHT**

REALTOR®

O: 662.441.2500 C: 662.641.6696

SarahReese@TomSmithLand.com

TomSmithLandandHomes.com

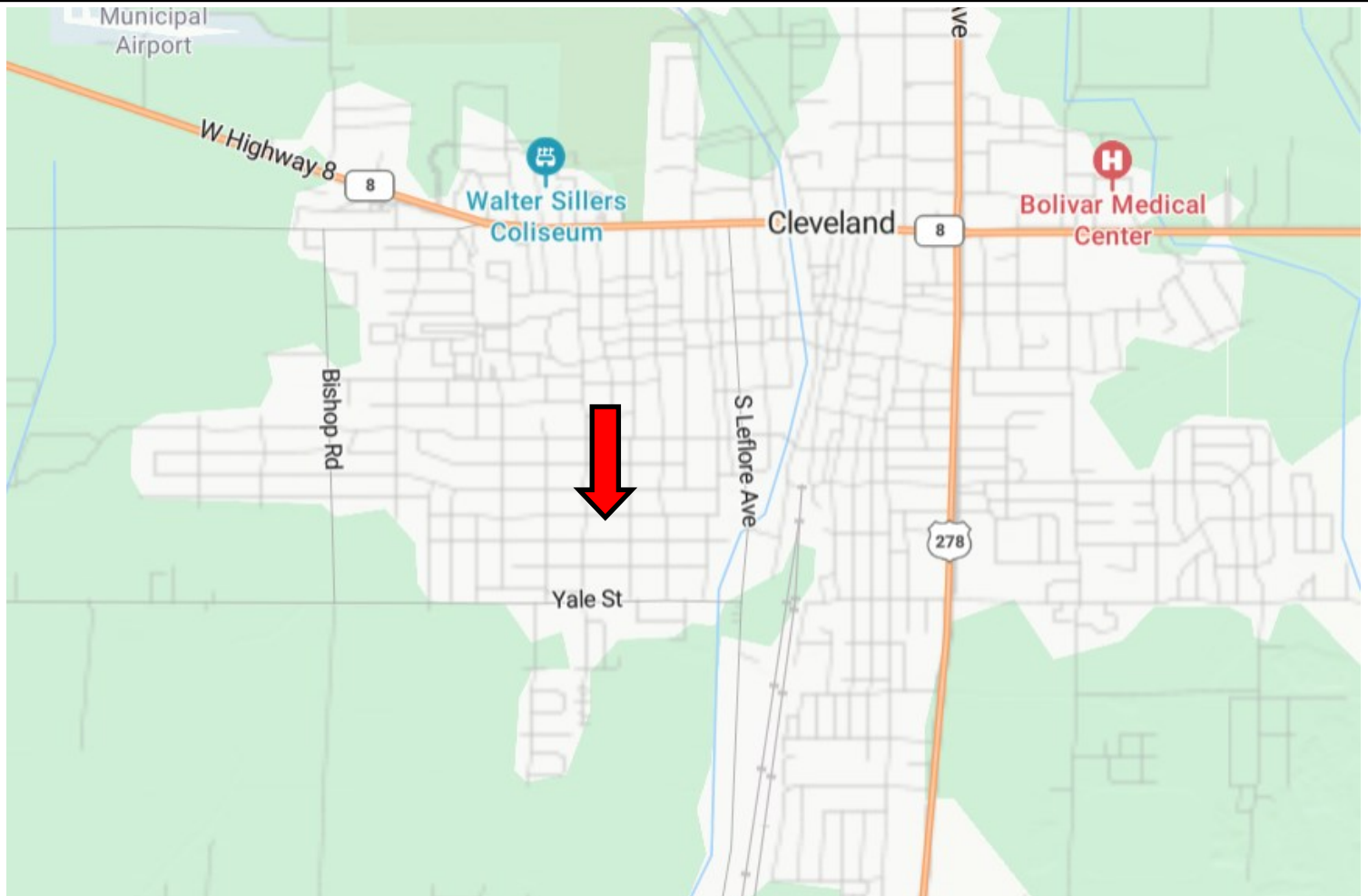


Expect More. Get More.

Information is believed to be accurate but not guaranteed.



# DIRECTIONAL MAP



**Address: 1009 Avery Street Cleveland, MS 38732**

**Directions from Hwy 8 & Hwy 61 in Cleveland, MS:** Travel West on Hwy 8 for approximately 1.0 miles. Turn left onto N. Fifth Avenue and travel 0.8 miles. Turn right onto Avery St. The house will be on the left. **[Click for Google Maps](#)**



**SARAH REESE  
WRIGHT**

REALTOR®

Office: 662.441.2500

Cell: 662.641.6696

[SarahReese@TomSmithLand.com](mailto:SarahReese@TomSmithLand.com)



Expect More. Get More.

**A Real Estate Expert You Can Trust**

[TomSmithLandandHomes.com](http://TomSmithLandandHomes.com)

Information is believed to be accurate but not guaranteed.

