

Commercial Space For Lease 210 North Street, Cleveland, MS

\$2,500
Per Month



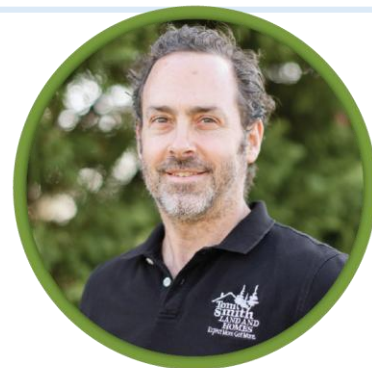
Located at 210 North Street in Cleveland, MS, this 2,850+/- square foot versatile space in Bolivar County, MS, is perfect for any business endeavor. This unique property has an MSDOT-reported 2,300 daily traffic count, a large exterior sign, ample parking, 164+/- feet of frontage, and is situated on a large 0.71+/- acre city lot. The interior is updated with everything your business needs to hit the ground running. The spacious foyer has vaulted ceilings, a front reception area, large windows allowing lots of natural light, tile tile-floored common area, and additional space with hardwood flooring. There is also a separate break room, conference rooms, and a safe space/storm shelter if needed. The exterior of the building has nice finishes for excellent curb appeal. A metal roof complements the brick construction, and both are in great condition. If needed, the drive-through window adds another possibility for use. Three full-size HVAC units keep this property comfortable year-round. For additional space, there is a 1,800+/- SF detached storage building located just behind the main structure as well. Call us today for your private showing!

****Triple Net Lease (Preferred) Excluding Roof**



TRACEY BELL
MANAGING BROKER

O: 662.441.2500 | C: 662.719.4720
Tracey@TomSmithLand.com



EMERSON LOVELACE
REALTOR®

O: 662.441.2500 | C: 601.715.3302
Emerson@TomSmithLand.com

TomSmithLandandHomes.com

Information is believed to be accurate but not guaranteed.





TRACEY BELL
MANAGING BROKER

O: 662.441.2500 | C: 662.719.4720
Tracey@TomSmithLand.com



EMERSON LOVELACE
REALTOR®

O: 662.441.2500 | C: 601.715.3302
Emerson@TomSmithLand.com

TomSmithLandandHomes.com

Information is believed to be accurate but not guaranteed.





TRACEY BELL
MANAGING BROKER

O: 662.441.2500 | C: 662.719.4720
Tracey@TomSmithLand.com



EMERSON LOVELACE
REALTOR®

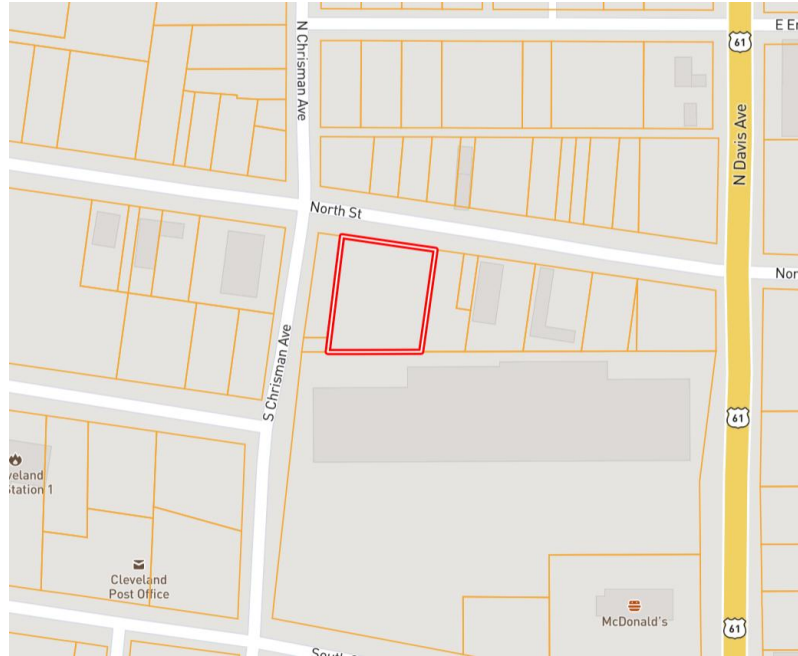
O: 662.441.2500 | C: 601.715.3302
Emerson@TomSmithLand.com

TomSmithLandandHomes.com

Information is believed to be accurate but not guaranteed



MAPS | [Click Here For an Interactive Map](#)



Address: 210 North Street, Cleveland, MS 38732

Directions from Hwy 8 and HWY 61 in Cleveland, MS:

Travel south on HWY 61 for 0.2 miles. Turn right onto North Street. After 0.1 miles, the building will be on the left.

[Click for Google Maps](#)



TRACEY BELL
MANAGING BROKER

O: 662.441.2500 | C: 662.719.4720
Tracey@TomSmithLand.com



Expect More. Get More.



EMERSON LOVELACE
REALTOR®

O: 662.441.2500 | C: 601.715.3302
Emerson@TomSmithLand.com

TomSmithLandandHomes.com

Information is believed to be accurate but not guaranteed.

