

RESIDENTIAL DEVELOPMENT OPPORTUNITY

42± Acres in Lafayette County, MS



\$1,200,000



This 42± acre Lafayette County, MS, property in the East Ridge Park Subdivision offers 32 surveyed lots, each over an acre in size, with paved roads, water, electricity, and two fire hydrants already in place for seven of the lots. The property is conveniently located on Hwy 30, just 15 minutes east of the historic Oxford Square. The tract is primarily wooded with gently rolling topography and a mix of pine and hardwood timber, which holds market value to help offset development costs. Part of the property falls within the highly rated Lafayette County School District, while the rest is in the Oxford City School District. Zoned Rural, the survey has not been filed with the county, allowing for flexibility if the current development plan doesn't fit your vision. Call Tom today!



TOM
WISEMAN

ASSOCIATE BROKER

Office: 662.268.6333

Cell: 662.317.0467

TWiseman@TomSmithLand.com



Expect More. Get More.

A Real Estate Expert You Can Trust

TomSmithLandandHomes.com

Information is believed to be accurate but not guaranteed.





A Real Estate Expert *You Can Trust!*

TOM WISEMAN

ASSOCIATE BROKER

O: 662.268.6333 C: 662.317.0467

TWiseman@TomSmithLand.com

TomSmithLandandHomes.com



Expect More. Get More.



Information is believed to be accurate but not guaranteed.



A Real Estate Expert *You Can Trust!*

TOM WISEMAN

ASSOCIATE BROKER

O: 662.268.6333 C: 662.317.0467

TWiseman@TomSmithLand.com

TomSmithLandandHomes.com

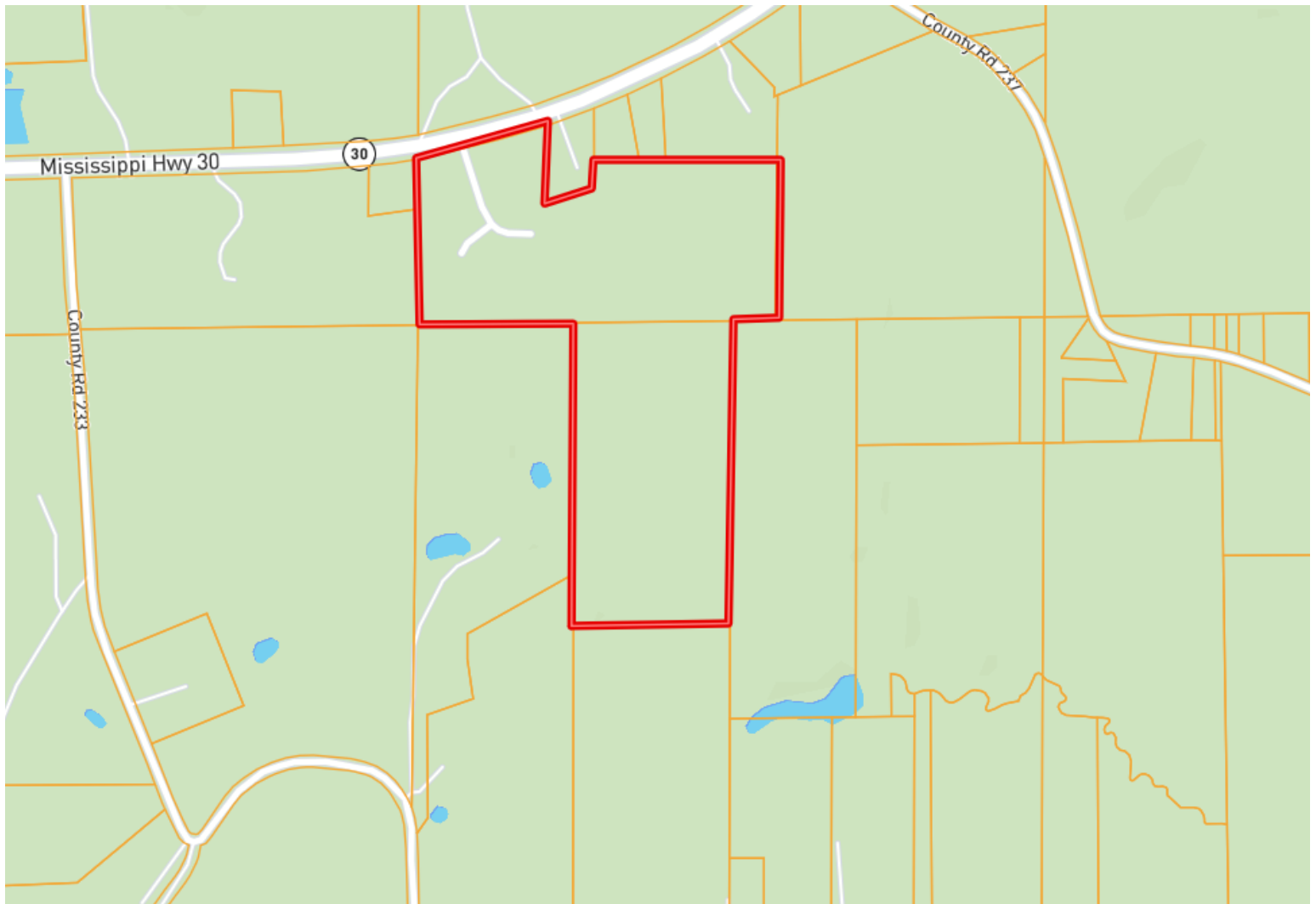


Expect More. Get More.



Information is believed to be accurate but not guaranteed.

OWNERSHIP MAP



A Real Estate Expert
You Can Trust!

TOM WISEMAN

ASSOCIATE BROKER

O: 662.268.6333 C: 662.317.0467

TWiseman@TomSmithLand.com

TomSmithLandandHomes.com



Expect More. Get More.

Information is believed to be accurate but not guaranteed.



AERIAL MAP



[Click Here for the LandId Interactive Map Link](#)

A Real Estate Expert
You Can Trust!

TOM WISEMAN

ASSOCIATE BROKER

O: 662.268.6333 C: 662.317.0467

Twiseman@TomSmithLand.com

TomSmithLandandHomes.com

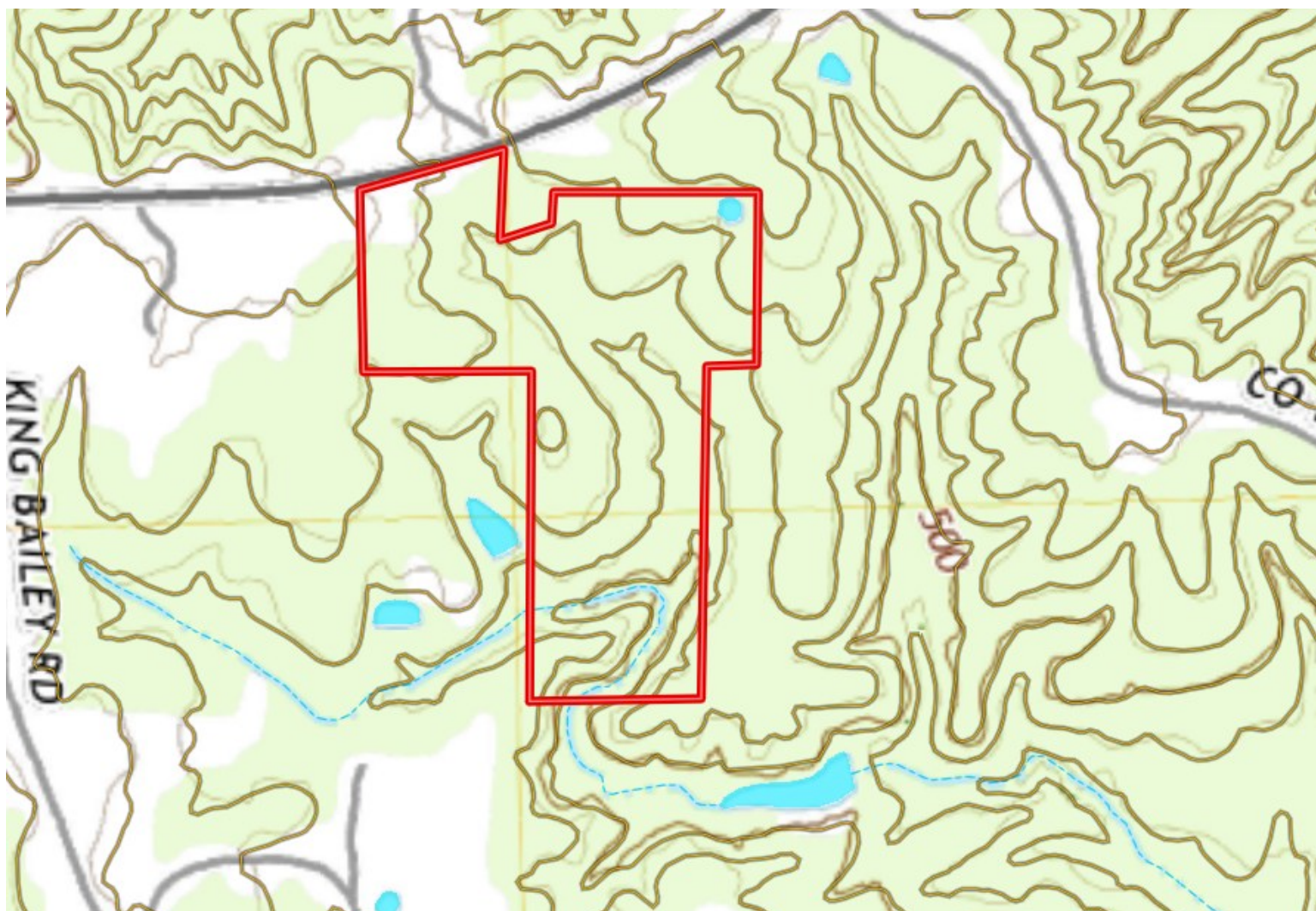


Expect More. Get More.



Information is believed to be accurate but not guaranteed.

TOPO MAP



A Real Estate Expert
You Can Trust!

TOM WISEMAN

ASSOCIATE BROKER

O: 662.268.6333 C: 662.317.0467

TWiseman@TomSmithLand.com

TomSmithLandandHomes.com

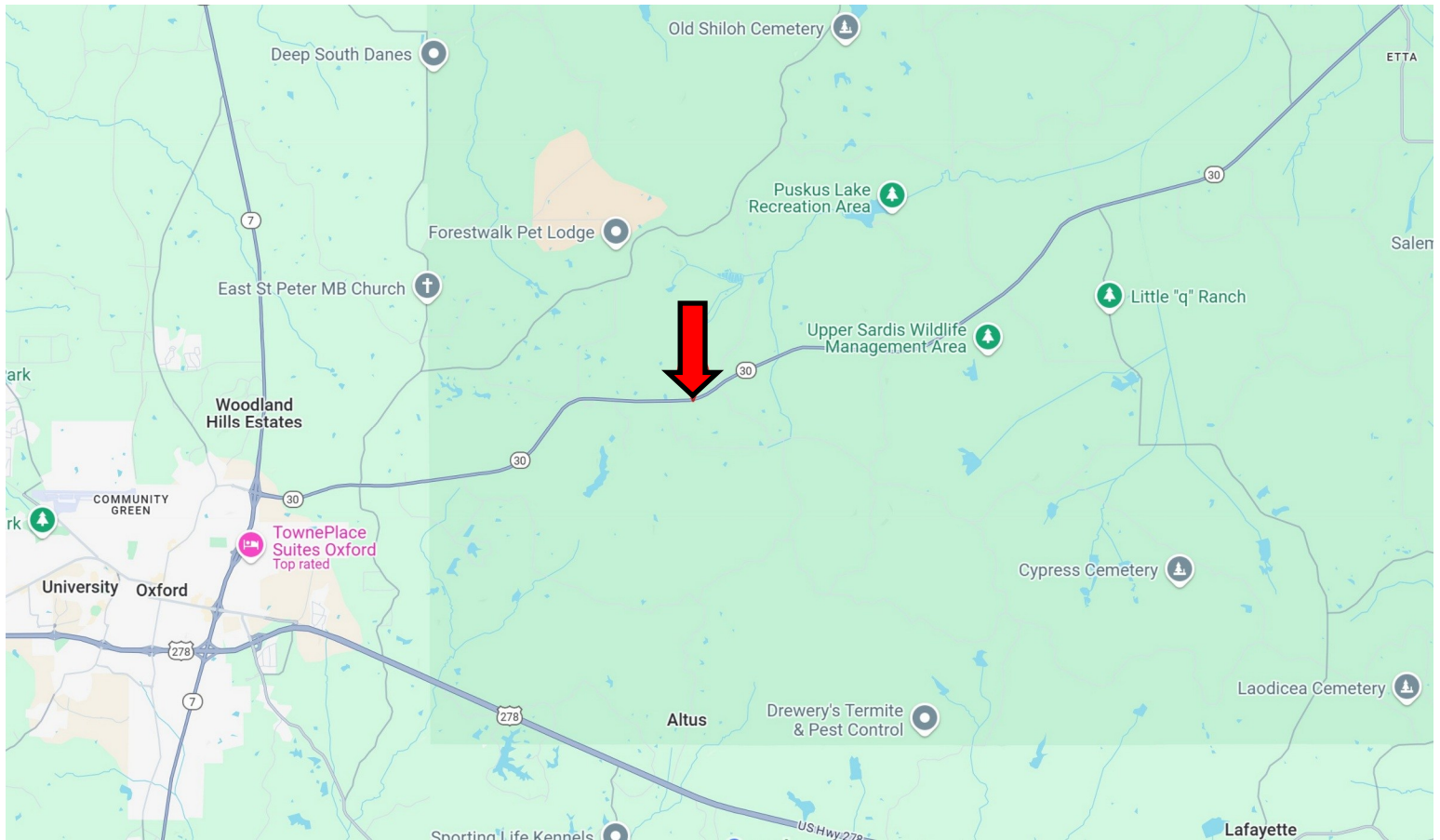


Expect More. Get More.

Information is believed to be accurate but not guaranteed.



DIRECTIONAL MAP



Directions from the intersection of Hwy 7 and Hwy 30 in Oxford, MS: Travel east on Hwy 30 for 6.2 miles. The property will be on the right.

Address: Hwy 30 East Oxford, MS 38655-Click for Google Maps Link



**TOM
WISEMAN**

ASSOCIATE BROKER

Office: 662.268.6333

Cell: 662.317.0467

TWiseman@TomSmithLand.com



Expect More. Get More.

A Real Estate Expert You Can Trust

TomSmithLandandHomes.com

Information is believed to be accurate but not guaranteed.

