

# RESIDENTIAL DEVELOPMENT OPPORTUNITY

## 42± Acres in Lafayette County, MS



 **\$1,200,000** 

East Ridge Park Subdivision, 32 surveyed lots containing over 1 acre each, with paved roads, water, electricity and two fire hydrants in place for seven. The tract is conveniently located on Hwy 30 only about 15 minutes east of the historic Oxford Square. Part of the property is in the Lafayette County School District and part is in the Oxford City School District, both highly rated. This wooded +/- 42 acres has gently rolling topography. The timber stand is a mix of pine and hardwood logs. The timber value will help offset development costs. Zoning is Rural and the survey is not filed with the county making it a clean slate for your vision if the current plan does not suit your needs. Call Tom today!



**TOM  
WISEMAN**

ASSOCIATE BROKER

Office: 662.268.6333

Cell: 662.317.0467

[TWiseman@TomSmithLand.com](mailto:TWiseman@TomSmithLand.com)



Expect More. Get More.

**A Real Estate Expert You Can Trust**

[TomSmithLandandHomes.com](http://TomSmithLandandHomes.com)

Information is believed to be accurate but not guaranteed.







## A Real Estate Expert *You Can Trust!*

**TOM WISEMAN**

ASSOCIATE BROKER

O: 662.268.6333 C: 662.317.0467

[TWiseman@TomSmithLand.com](mailto:TWiseman@TomSmithLand.com)

[TomSmithLandandHomes.com](http://TomSmithLandandHomes.com)



Expect More. Get More.



Information is believed to be accurate but not guaranteed.





## A Real Estate Expert *You Can Trust!*

**TOM WISEMAN**

ASSOCIATE BROKER

O: 662.268.6333 C: 662.317.0467

[TWiseman@TomSmithLand.com](mailto:TWiseman@TomSmithLand.com)

[TomSmithLandandHomes.com](http://TomSmithLandandHomes.com)



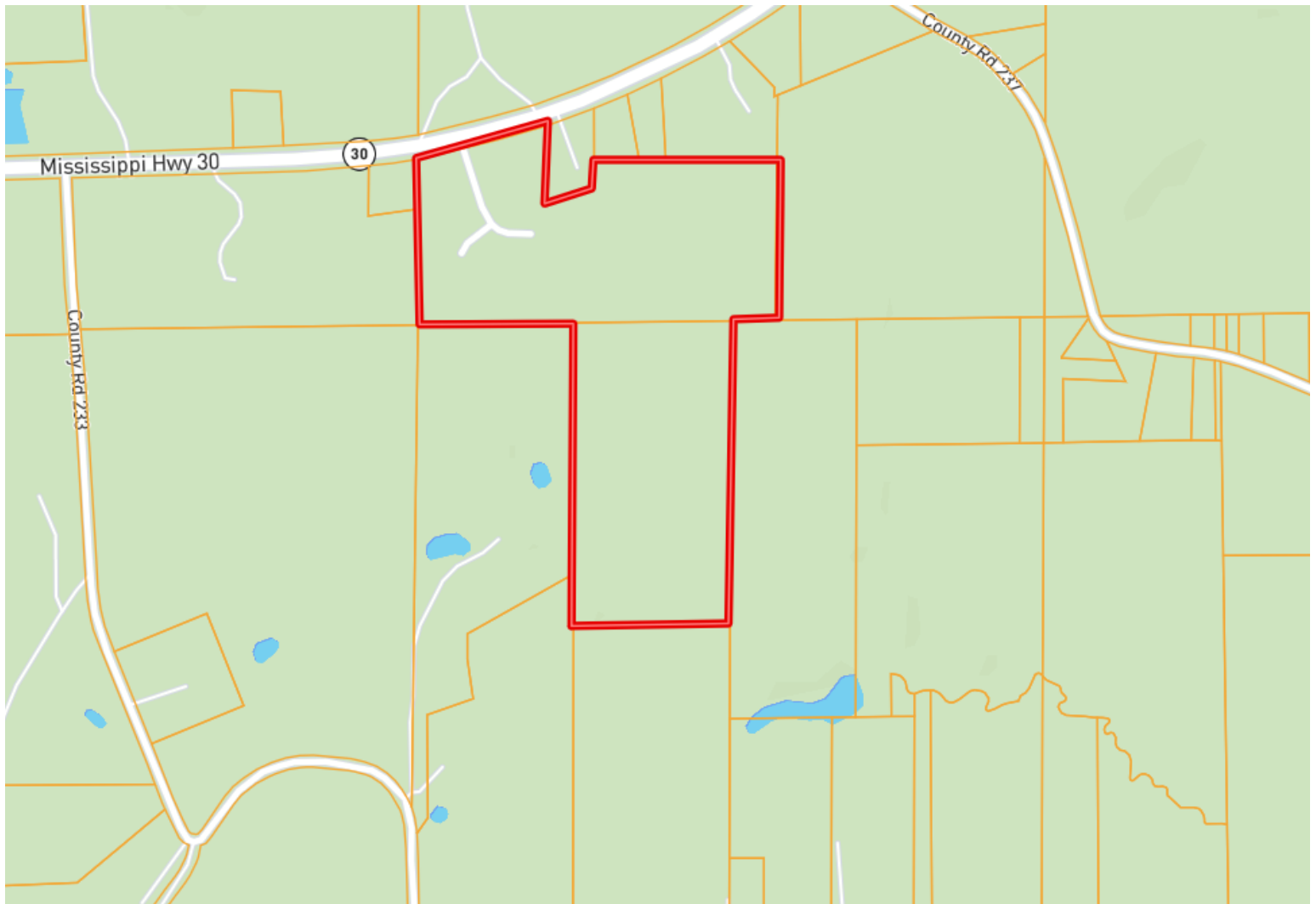
Expect More. Get More.



Information is believed to be accurate but not guaranteed.



# OWNERSHIP MAP



**A Real Estate Expert**  
*You Can Trust!*

**TOM WISEMAN**

ASSOCIATE BROKER

O: 662.268.6333 C: 662.317.0467

[TWiseman@TomSmithLand.com](mailto:TWiseman@TomSmithLand.com)

[TomSmithLandandHomes.com](http://TomSmithLandandHomes.com)



Expect More. Get More.

Information is believed to be accurate but not guaranteed.



# AERIAL MAP



[Click Here for the LandId Interactive Map Link](#)

**A Real Estate Expert**  
*You Can Trust!*

**TOM WISEMAN**

ASSOCIATE BROKER

O: 662.268.6333 C: 662.317.0467

Twiseman@TomSmithLand.com

TomSmithLandandHomes.com



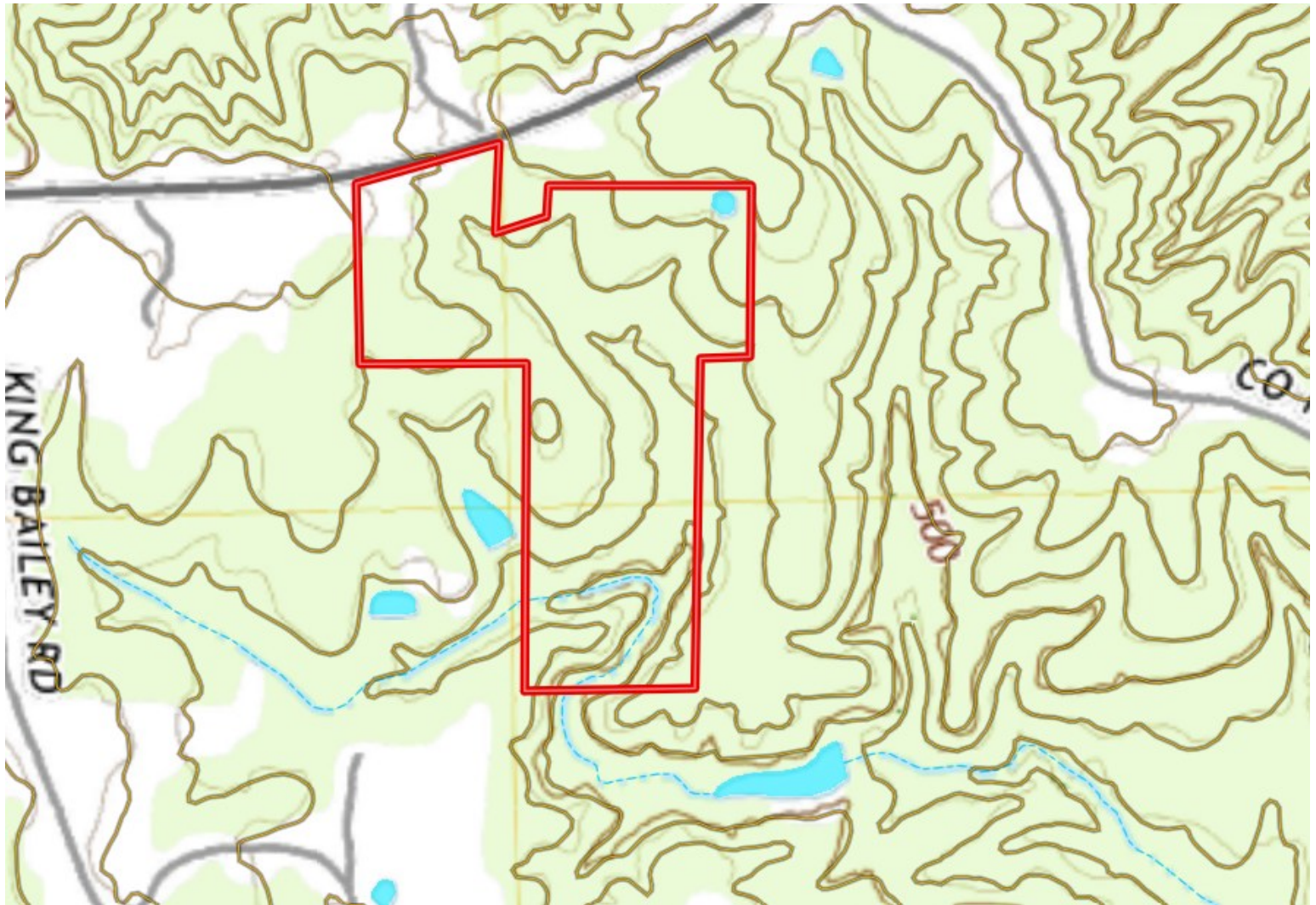
Expect More. Get More.



Information is believed to be accurate but not guaranteed.



# TOPO MAP



**A Real Estate Expert**  
*You Can Trust!*

**TOM WISEMAN**

ASSOCIATE BROKER

O: 662.268.6333 C: 662.317.0467

[TWiseman@TomSmithLand.com](mailto:TWiseman@TomSmithLand.com)

[TomSmithLandandHomes.com](http://TomSmithLandandHomes.com)

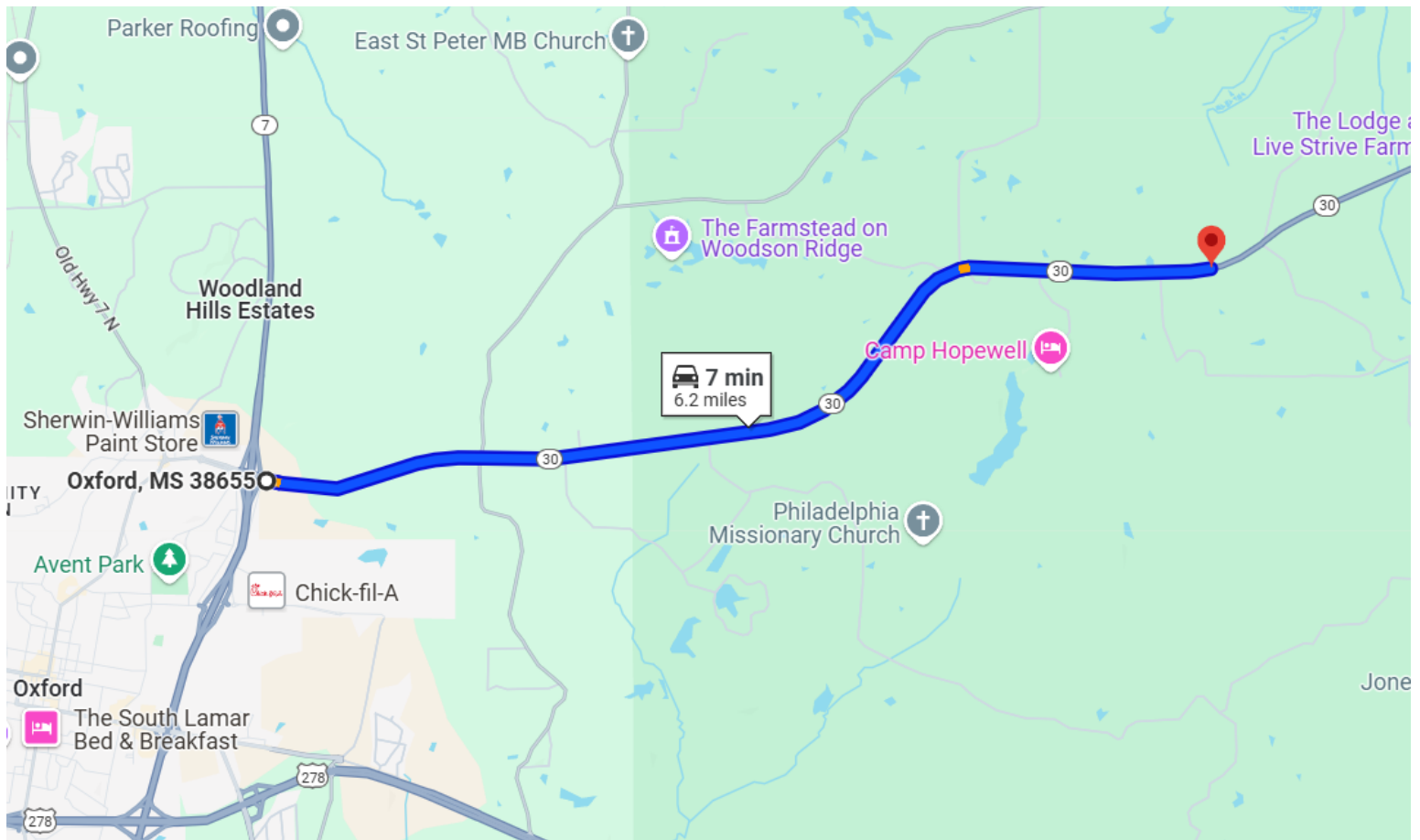


Expect More. Get More.



Information is believed to be accurate but not guaranteed.

# DIRECTIONAL MAP



**Directions from the intersection of Hwy 7 and Hwy 30 in Oxford, MS:** Travel east on Hwy 30 for 6.2 miles to the property on the right.

[Address: Hwy 30 East Oxford, MS 38655-Click for Google Maps Link](#)



**TOM  
WISEMAN**

ASSOCIATE BROKER

Office: 662.268.6333

Cell: 662.317.0467

[TWiseman@TomSmithLand.com](mailto:TWiseman@TomSmithLand.com)



Expect More. Get More.

**A Real Estate Expert You Can Trust**

[TomSmithLandandHomes.com](http://TomSmithLandandHomes.com)

Information is believed to be accurate but not guaranteed.

