

# SMALL TOWN LIVING

## 1.91± Acres in Benton County, MS

103 Hemlock Drive ,Potts Camp, MS 38659



**\$215,000**

Take a look at this 1,805 sf home on 1.91± acres in Benton County, MS, just outside the city limits of Potts Camp on Hemlock Drive, a quiet dead-end street with just a few houses. This home features four bedrooms, two baths, a kitchen, and a living room. The house is in good condition, with new windows and central heating/air conditioning. Entertain on the concrete patio. The large, partially wooded lot provides plenty of room for the kids to play. It is located in the desirable Benton County School District. Call Tom Wiseman today!

**From the intersection of Interstate 22 and Bypass Street in Potts Camp, MS:** Travel Bypass Street for 0.2 miles. Turn left onto Hwy 178 and travel 1.6 miles. Turn left onto Hemlock Drive. After 0.1 miles, the property will be on the left.

[GOOGLE MAP LINK](#)



**TOM  
WISEMAN**

ASSOCIATE BROKER

Office: 662.268.6333

Cell: 662.317.0467

[TWiseman@TomSmithLand.com](mailto:TWiseman@TomSmithLand.com)



Expect More. Get More.

**A Real Estate Expert You Can Trust**

[TomSmithLandandHomes.com](http://TomSmithLandandHomes.com)

Information is believed to be accurate but not guaranteed.







**A Real Estate Expert**  
*You Can Trust!*

**TOM WISEMAN**

ASSOCIATE BROKER

O: 662.268.6333 C: 662.317.0467

Twiseman@TomSmithLand.com

TomSmithLandandHomes.com

**Tom  
Smith  
LAND AND  
HOMES**

Expect More. Get More.

2011-2024  
**BEST  
BROKERAGES**

Information is believed to be accurate but not guaranteed.





**A Real Estate Expert**  
*You Can Trust!*

**TOM WISEMAN**

ASSOCIATE BROKER

O: 662.268.6333 C: 662.317.0467

Twiseman@TomSmithLand.com

TomSmithLandandHomes.com



Expect More. Get More.



Information is believed to be accurate but not guaranteed.



# AERIAL MAP



[CLICK HERE FOR AN INTERACTIVE MAP LINK](#)

**A Real Estate Expert**  
*You Can Trust!*

**TOM WISEMAN**

ASSOCIATE BROKER

O: 662.268.6333 C: 662.317.0467

Twiseman@TomSmithLand.com

TomSmithLandandHomes.com

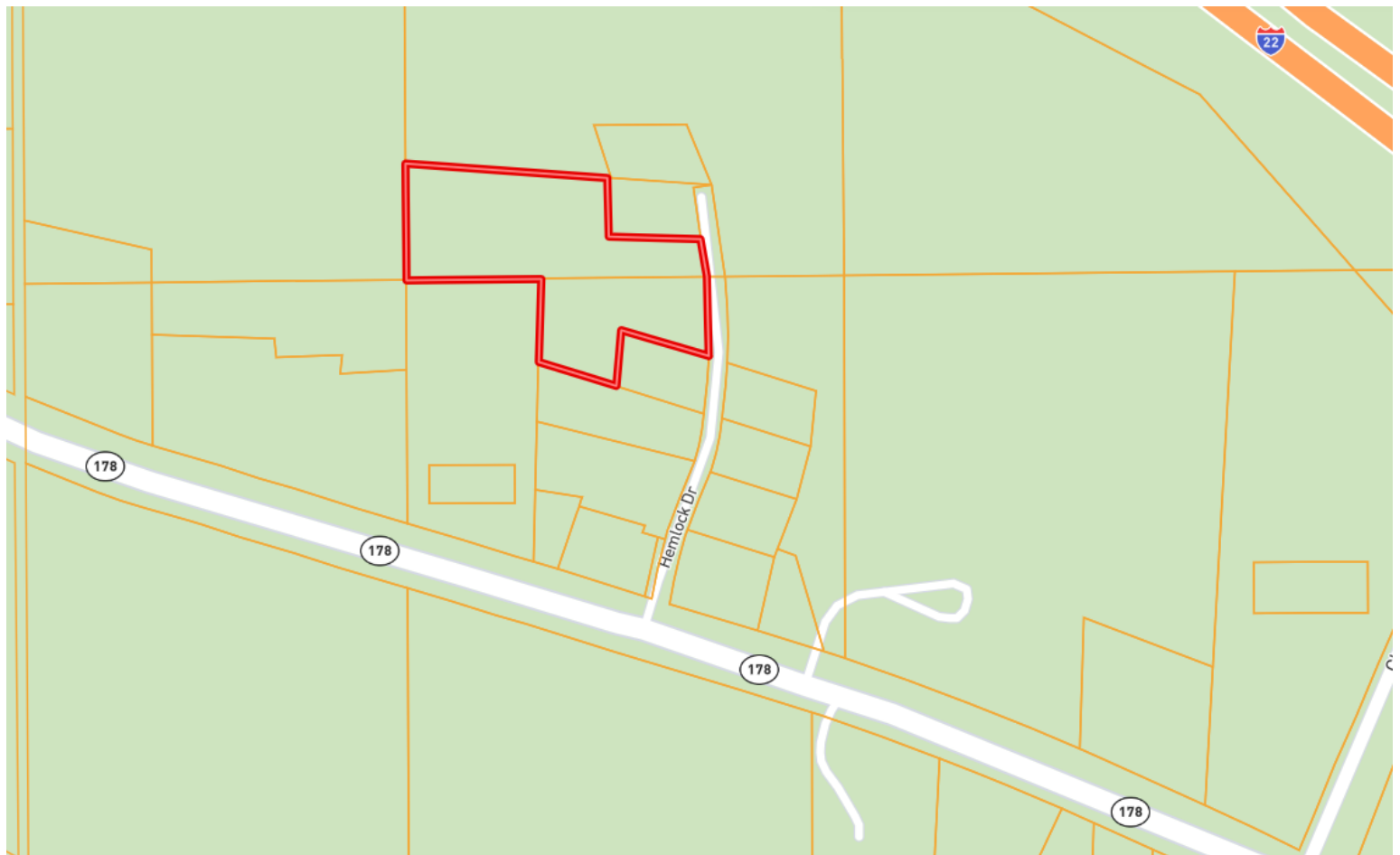


Expect More. Get More.



Information is believed to be accurate but not guaranteed.

# OWNERSHIP MAP



**A Real Estate Expert**  
*You Can Trust!*

**TOM WISEMAN**

ASSOCIATE BROKER

O: 662.268.6333 C: 662.317.0467

[TWiseman@TomSmithLand.com](mailto:TWiseman@TomSmithLand.com)

[TomSmithLandandHomes.com](http://TomSmithLandandHomes.com)



Expect More. Get More.

Information is believed to be accurate but not guaranteed.





# DIRECTIONAL MAP



**From the intersection of Interstate 22 and Bypass Street in Potts Camp, MS:** Travel Bypass Street for 0.2 miles. Turn left onto Hwy 178 and travel 1.6 miles. Turn left onto Hemlock Drive. After 0.1 miles, the property will be on the left.

**Address:** 103 Hemlock Drive Potts Camp, MS 38659 [GOOGLE MAP LINK](#)



**TOM  
WISEMAN**

ASSOCIATE BROKER

Office: 662.268.6333

Cell: 662.317.0467

[TWiseman@TomSmithLand.com](mailto:TWiseman@TomSmithLand.com)



Expect More. Get More.

**A Real Estate Expert You Can Trust**

[TomSmithLandandHomes.com](http://TomSmithLandandHomes.com)

Information is believed to be accurate but not guaranteed.

