



301 S. Victoria Avenue Cleveland, MS 38732 / \$294,000

This charming brick home sits on a corner lot in Bolivar County, MS, and features the charm of a Southern home and the luxuriousness of an updated kitchen. The kitchen features stainless steel appliances, a gas range with a hood, a farmhouse sink, ample butcher block counter space, floating shelves, and tile floors. As you enter through the leaded glass door, there is a spacious sitting room with a charming fireplace that then flows into a formal dining room. The den has large windows, a brick fireplace, and built-in cabinets and shelves. The primary bedroom has large windows and a charming en-suite bathroom. The other three bedrooms also have plenty of space. To experience the charm of this home for yourself, call Tracey to schedule your private showing!



**TRACEY
BELL**

MANAGING BROKER

Office: 662.441.2500

Cell: 662.719.4720

Tracey@TomSmithLand.com



Expect More. Get More.

A Real Estate Expert You Can Trust

TomSmithLandandHomes.com

Information is believed to be accurate but not guaranteed.





A Real Estate Expert
You Can Trust!

TRACEY BELL

MANAGING BROKER

O: 662.441.2500 C: 662.719.4720

Tracey@TomSmithLand.com

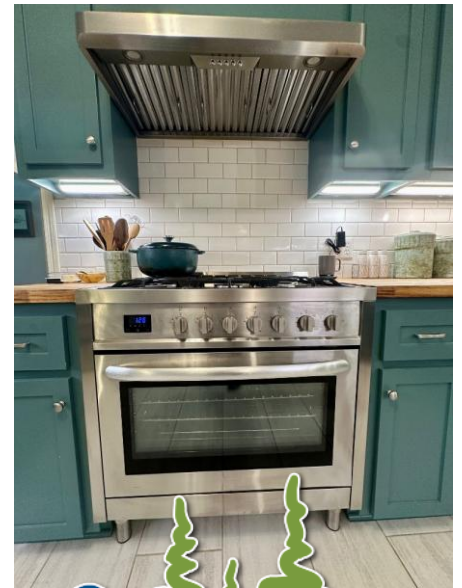
TomSmithLandandHomes.com

**Tom
Smith
LAND AND
HOMES**

Expect More. Get More.

LandAgent
2011-2024
NATIONAL
BEST
BROKERAGES

Information is believed to be accurate but not guaranteed.



*A Real Estate Expert
You Can Trust!*

TRACEY BELL

MANAGING BROKER

O: 662.441.2500 C: 662.719.4720

Tracey@TomSmithLand.com

TomSmithLandandHomes.com

**Tom
Smith
LAND AND
HOMES**

Expect More. Get More.

LandAgent
2011-2024
NATIONAL
BEST
BROKERAGES

Information is believed to be accurate but not guaranteed.



A Real Estate Expert
You Can Trust!

TRACEY BELL

MANAGING BROKER

O: 662.441.2500 C: 662.719.4720

Tracey@TomSmithLand.com

TomSmithLandandHomes.com

**Tom
Smith
LAND AND
HOMES**

Expect More. Get More.

LandAgent
2011-2024
NATIONAL
BEST
BROKERAGES

Information is believed to be accurate but not guaranteed.



A Real Estate Expert You Can Trust!

TRACEY BELL

MANAGING BROKER

O: 662.441.2500 C: 662.719.4720

Tracey@TomSmithLand.com

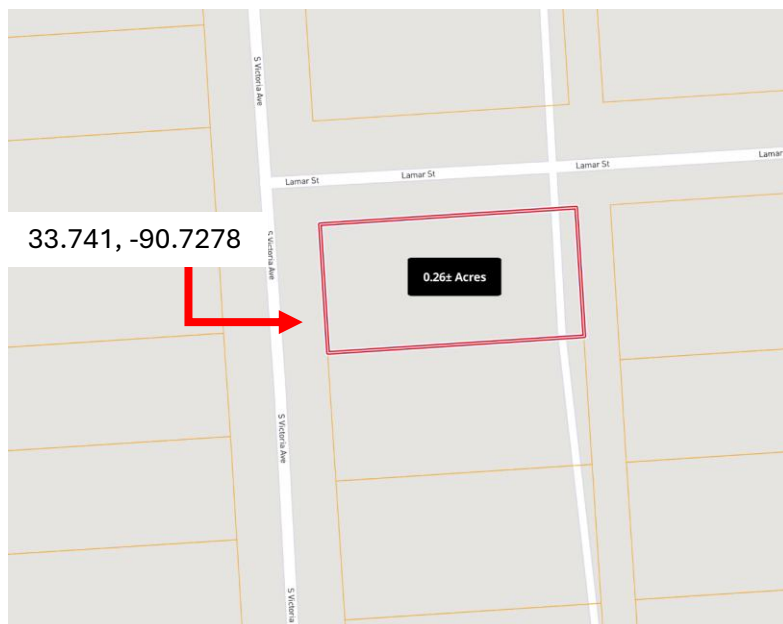
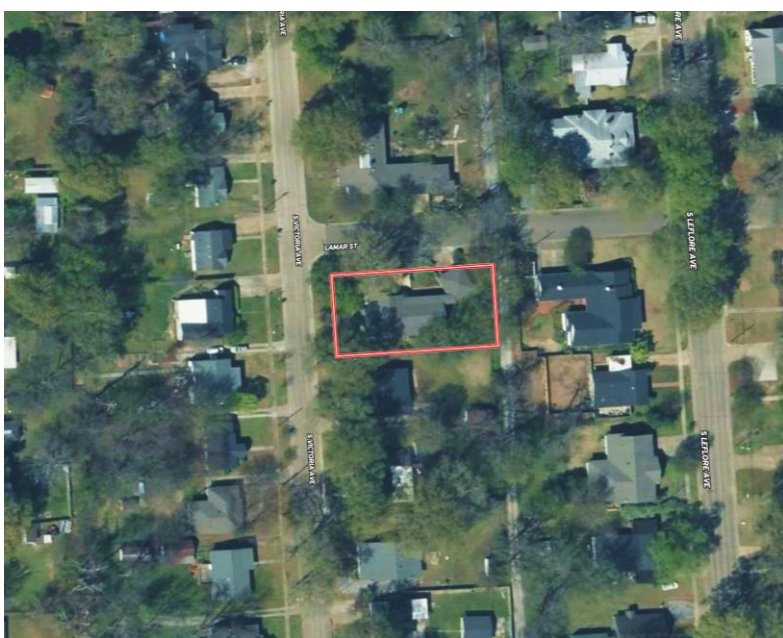
TomSmithLandandHomes.com

**Tom
Smith
LAND AND
HOMES**

Expect More. Get More.

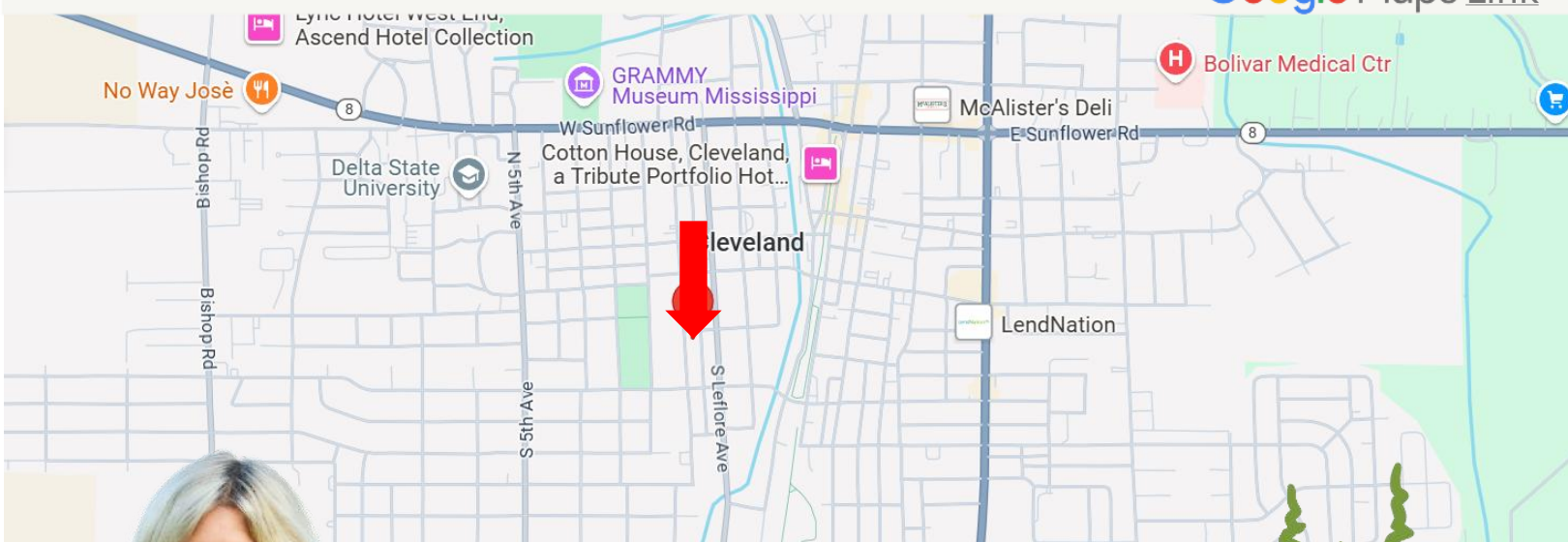
LandAgent
2011-2024
NATIONAL
BEST
BROKERAGES

Information is believed to be accurate but not guaranteed.



Directions from Hwy 8 & Hwy 61 in Cleveland: Travel west on Hwy 8 for 0.7 miles. Turn left onto N. Victoria Avenue and travel 0.5 mile. The home will be at the left- at the corner of S. Victoria Avenue and Lamar Street.

Address: 301 S. Victoria Avenue, Cleveland, MS 38732



**TRACEY
BELL**

MANAGING BROKER

Office: 662.441.2500

Cell: 662.719.4720

Tracey@TomSmithLand.com



Expect More. Get More.

A Real Estate Expert You Can Trust

TomSmithLandandHomes.com

Information is believed to be accurate but not guaranteed.

