

CHARMING COAHOMA COUNTY HOME

0.3 miles from Lee Academy

24 Crestline Ave, Clarksdale, MS 38614



\$190,000

Welcome to 24 Crestline Ave in Clarksdale, MS! This charming home has been newly updated throughout. It features a garage with a storage room, three bedrooms, two bathrooms, and a lovely dining area. The 1,570 sq. ft. home has stainless steel appliances, updated kitchen cabinets and handles, and your very own laundry room. Situated on a large half-acre corner lot, there is plenty of driveway space for parking and a spacious yard for outdoor activities. The back patio is conveniently located off the living room and is a great hangout area. The living room includes a cozy gas fireplace.

Additionally, the house is within walking distance of Lee Academy.



**ANTHONY
STEEN**

REALTOR®

Office: 601.898.2772

Cell: 662.645.5151

Anthony@TomSmithLand.com



Expect More. Get More.

A Real Estate Expert You Can Trust

TomSmithLandandHomes.com

Information is believed to be accurate but not guaranteed.





A Real Estate Expert
You Can Trust!

ANTHONY STEEN
REALTOR®
O: 601.898.2772 C: 662.645.5151
Anthony@TomSmithLand.com
TomSmithLandandHomes.com

Tom Smith
LAND AND HOMES
Expect More. Get More.

2011-2024
BEST
BROKERAGES

Information is believed to be accurate but not guaranteed.



A Real Estate Expert
You Can Trust!

ANTHONY STEEN
REALTOR®
O: 601.898.2772 C: 662.645.5151
Anthony@TomSmithLand.com
TomSmithLandandHomes.com

Tom Smith
LAND AND
HOMES
Expect More. Get More.

2011-2024
BEST
BROKERAGES

Information is believed to be accurate but not guaranteed.



A Real Estate Expert
You Can Trust!

ANTHONY STEEN
REALTOR®
O: 601.898.2772 C: 662.645.5151
Anthony@TomSmithLand.com
TomSmithLandandHomes.com

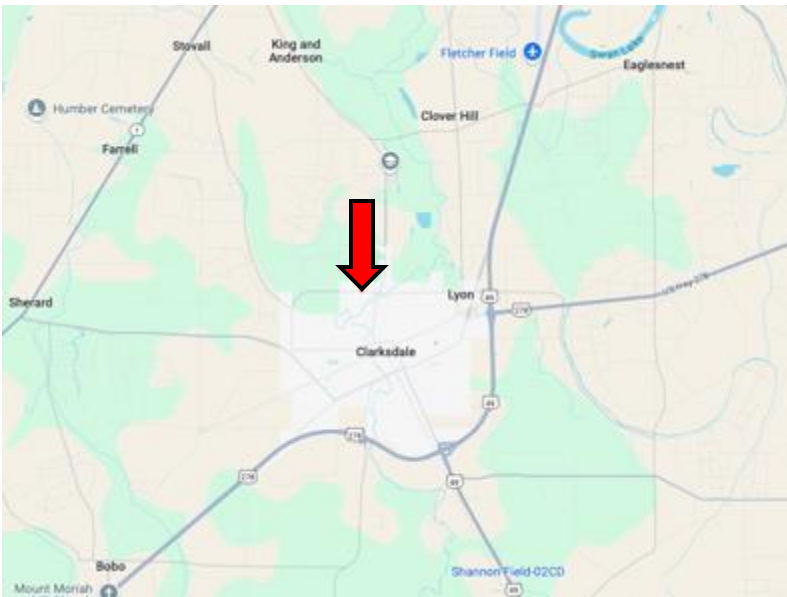
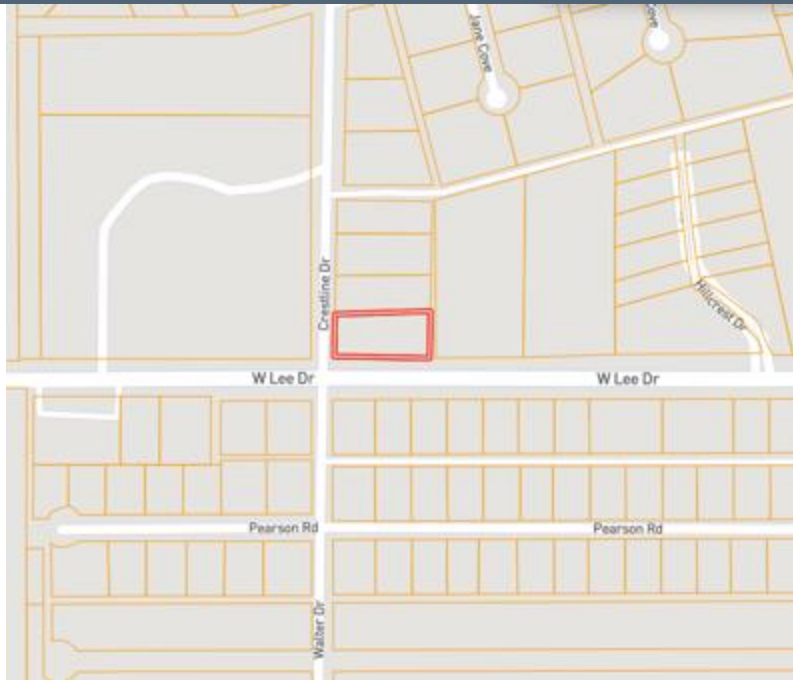
Tom Smith
LAND AND HOMES
Expect More. Get More.

LandReport
2011-2024
BEST
BROKERAGES

Information is believed to be accurate but not guaranteed.

MAPS

[Click for the Interactive Map](#)



Address: 24 Crestline Ave,
Clarksdale, MS 38614

Directions from US-61 & US 49 in Clarksdale, MS: Travel West on US-61 for 0.5 miles. Take the exit toward Clarksdale. Merge onto Desoto Ave, and travel 3.4 miles. Turn left onto E Lee Drive and travel 0.5 miles. Turn right onto Crestline Ave. After 105 feet, the home will be on the right.

[Google Map Link](#)



**ANTHONY
STEEN**
REALTOR®

Office: 601.898.2772

Cell: 662.645.5151

Anthony@TomSmithLand.com



Expect More. Get More.

A Real Estate Expert You Can Trust

TomSmithLandandHomes.com

Information is believed to be accurate but not guaranteed.

