

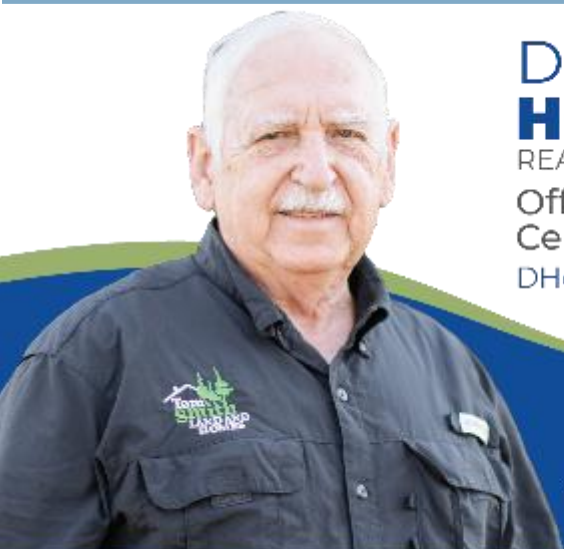
Recreational Timber Tract

11.5± Acres in Choctaw County, MS



\$31,000

This 11.5 +/- acre property in Choctaw County, MS, is located about 25 minutes northwest of Starkville, MS, and just four miles south of Mathiston on Reed Road near the Cross Roads Church community. The land features a natural pine and hardwood timber mix, offering excellent deer and turkey hunting potential. Utilities are available on Reed Road, making it an excellent opportunity for recreational use or future development. Call Doyes today for a personal tour.



**DOYES
HOLLAND**
REALTOR®

Office: 662.268.6333

Cell: 662.312.2165

DHolland@TomSmithLand.com



Expect More. Get More.

A Real Estate Expert You Can Trust

TomSmithLandandHomes.com

Information is believed to be accurate but not guaranteed.





A Real Estate Expert
You Can Trust!

DOYES HOLLAND
REALTOR®

O: 662.268.6333 C: 662.312.2165

DHolland@TomSmithLand.com

TomSmithLandandHomes.com

**Tom
Smith
LAND AND
HOMES**

Expect More. Get More.

2011-2024
**BEST
REALTORS**

Information is believed to be accurate but not guaranteed.

AERIAL MAP



[Click Here for the Landid Interactive Map Link](#)

A Real Estate Expert
You Can Trust!

DOYES HOLLAND
REALTOR®

O: 662.268.6333 C: 662.312.2165

DHolland@TomSmithLand.com

TomSmithLandandHomes.com

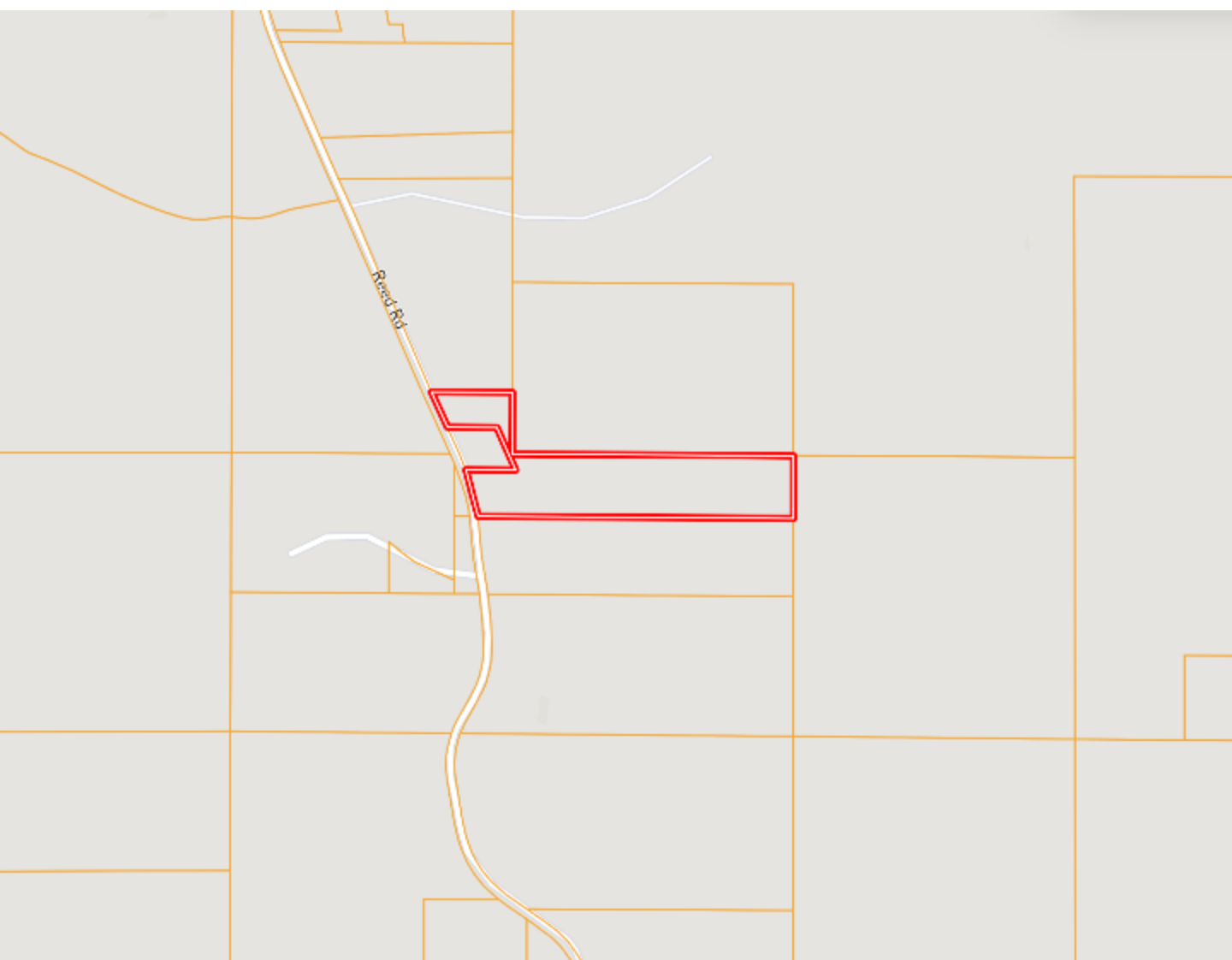


Expect More. Get More.

Information is believed to be accurate but not guaranteed.



OWNERSHIP MAP



A Real Estate Expert
You Can Trust!

DOYES HOLLAND
REALTOR®

O: 662.268.6333 C: 662.312.2165

DHolland@TomSmithLand.com

TomSmithLandandHomes.com



Expect More. Get More.

Information is believed to be accurate but not guaranteed.



SOIL MAP



SOIL CODE	SOIL DESCRIPTION	ACRES	%	CPI	NCCPI	CAP
MP	Maben-Providence association, hilly	5.97	53.02	0	40	7e
Oa	Oaklimeter silt loam, 0 to 2 percent slopes, occasionally flooded	2.14	19.01	0	65	2w
MaE	Maben fine sandy loam, 8 to 15 percent slopes	1.72	15.28	0	72	4e
MaC	Maben silt loam, 5 to 8 percent slopes	1.42	12.61	0	74	3e

A Real Estate Expert
You Can Trust!

DOYES HOLLAND
REALTOR®

O: 662.268.6333 C: 662.312.2165

DHolland@TomSmithLand.com

TomSmithLandandHomes.com

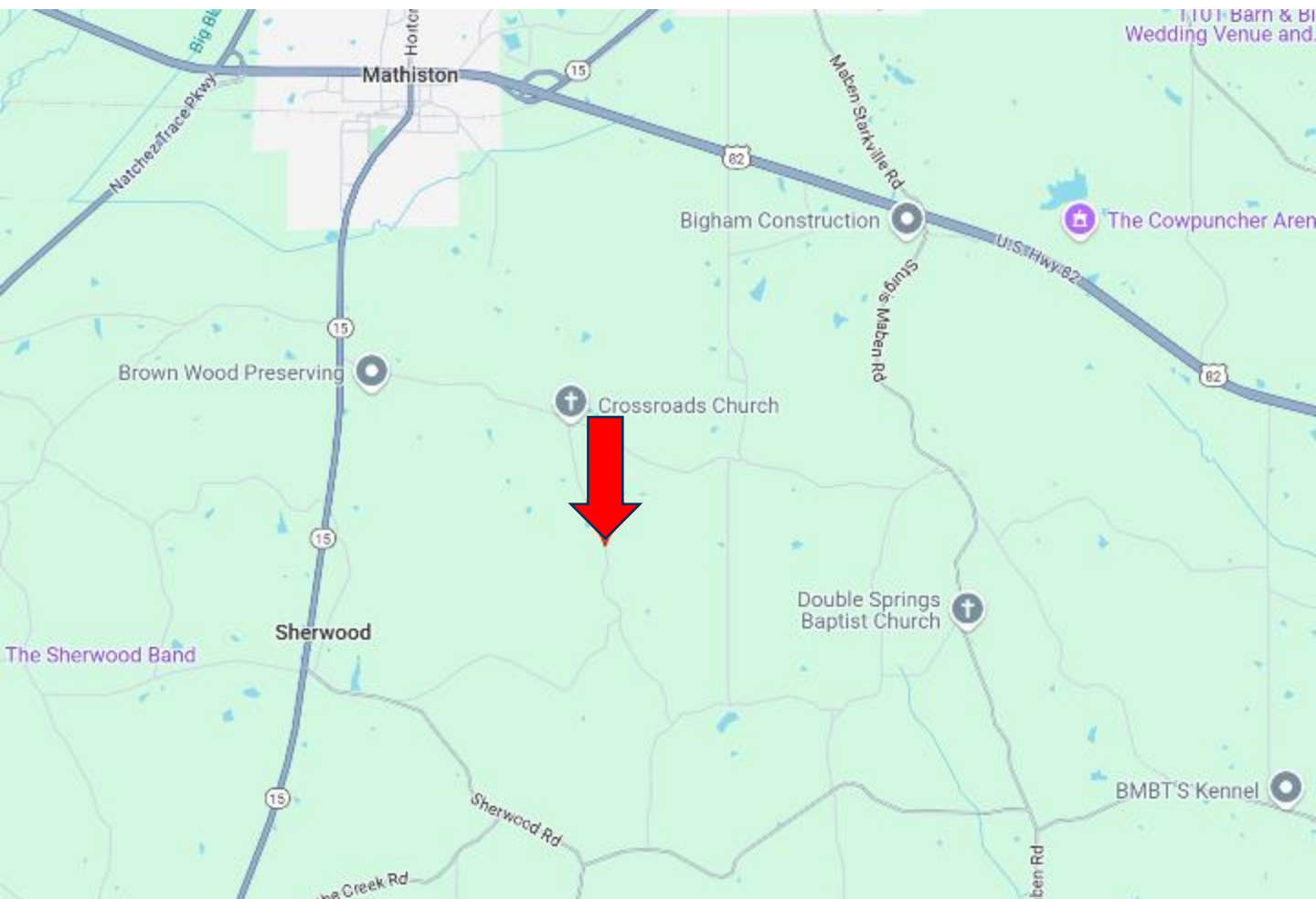


Expect More. Get More.



Information is believed to be accurate but not guaranteed.

DIRECTIONAL MAP



Directions from the intersection of Hwy 82 and 15 in Mathiston, MS: Travel south on Hwy 15 S/Horton St toward S Madison St for 2 miles. Turn left onto Crossroads Church Rd. and travel 1.5 miles. Turn right onto Reed Rd. After 0.9 miles, the property will be on your right.

[GOOGLE MAP LINK](#)



**DOYES
HOLLAND**
REALTOR®

Office: 662.268.6333

Cell: 662.312.2165

DHolland@TomSmithLand.com



Expect More. Get More.

A Real Estate Expert You Can Trust

TomSmithLandandHomes.com

Information is believed to be accurate but not guaranteed.

