

Charming Country Home in Florence

4 Beds | 3 Baths | 2,135 Sq Ft | 1.75+/- Acres in Rankin County, MS



749 Thomasville Road, Florence, MS 39073 | \$363,000

- Beautifully maintained inside and out
- Granite countertops & classic tile finishes
- Open-concept living/dining—great for hosting
- Mixed flooring: tile, hardwood laminate & carpet
- Spacious primary suite: dual vanities, walk-in shower, soaker tub
- Electric A/C + gas heat, range, fireplace & water heaters
- Extra parking + storage shed
- Covered back porch with water & gas hookups
- Room to roam, modern comforts, and a peaceful setting close to town!



COLBY
WATSON

REALTOR®

Office: 601.898.2772

Cell: 601.668.8096

Colby@TomSmithLand.com



Expect More. Get More.

A Real Estate Expert You Can Trust

TomSmithLandandHomes.com

Information is believed to be accurate but not guaranteed.





749 Thomasville Road, Florence, MS 39073 | \$363,000

Welcome to your peaceful retreat in the country! This well-maintained 4-bedroom, 3-bath home offers 2,135 square feet of comfortable living. The house is ideally situated on 1.75+/-—beautifully landscaped acres in Rankin County, just off Thomasville Road in Florence, MS. The kitchen features sleek granite countertops, while the bathrooms showcase timeless tile finishes. The spacious, open-concept living and dining area is ideal for everyday living or hosting family and friends. Flooring throughout the home includes tile in the kitchen and bathrooms, hardwood laminate in the main living spaces, and cozy carpet in two bedrooms—blending style with everyday practicality. The private primary suite is a true retreat with separate closets, double vanities, a walk-in shower, and a relaxing soaker tub. Enjoy year-round comfort with electric A/C and gas utilities for the heat, range, fireplace, and water heaters, which offer both efficiency and reliability. The property includes extra parking space and a handy storage shed. The partially covered back porch has water and gas connections, making it easy to design your dream outdoor kitchen. Offering room to breathe, modern comforts, and a great location close to town, this home has everything you want in a country escape. See it for yourself! Call Colby to schedule your tour!

A Real Estate Expert
You Can Trust!

COLBY WATSON
REALTOR®

O: 601.898.2772 C: 601.668.8096

Colby@TomSmithLand.com

TomSmithLandandHomes.com



Expect More. Get More.



Information is believed to be accurate but not guaranteed.



A Real Estate Expert You Can Trust!

COLBY WATSON
REALTOR®

O: 601.898.2772 C: 601.668.8096

Colby@TomSmithLand.com

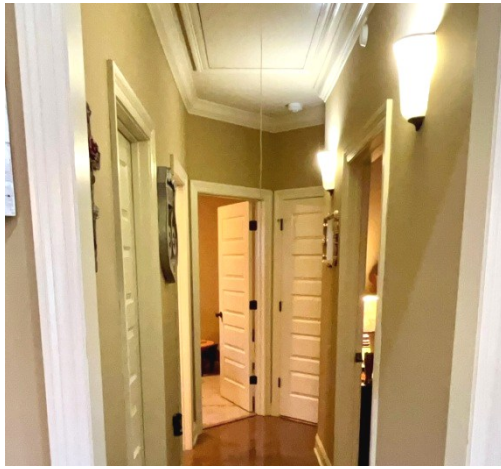
TomSmithLandandHomes.com



Expect More. Get More.



Information is believed to be accurate but not guaranteed.



A Real Estate Expert You Can Trust!

COLBY WATSON
REALTOR®

O: 601.898.2772 C: 601.668.8096

Colby@TomSmithLand.com

TomSmithLandandHomes.com



Expect More. Get More.



Information is believed to be accurate but not guaranteed.



A Real Estate Expert
You Can Trust!

COLBY WATSON
REALTOR®

O: 601.898.2772 C: 601.668.8096

Colby@TomSmithLand.com

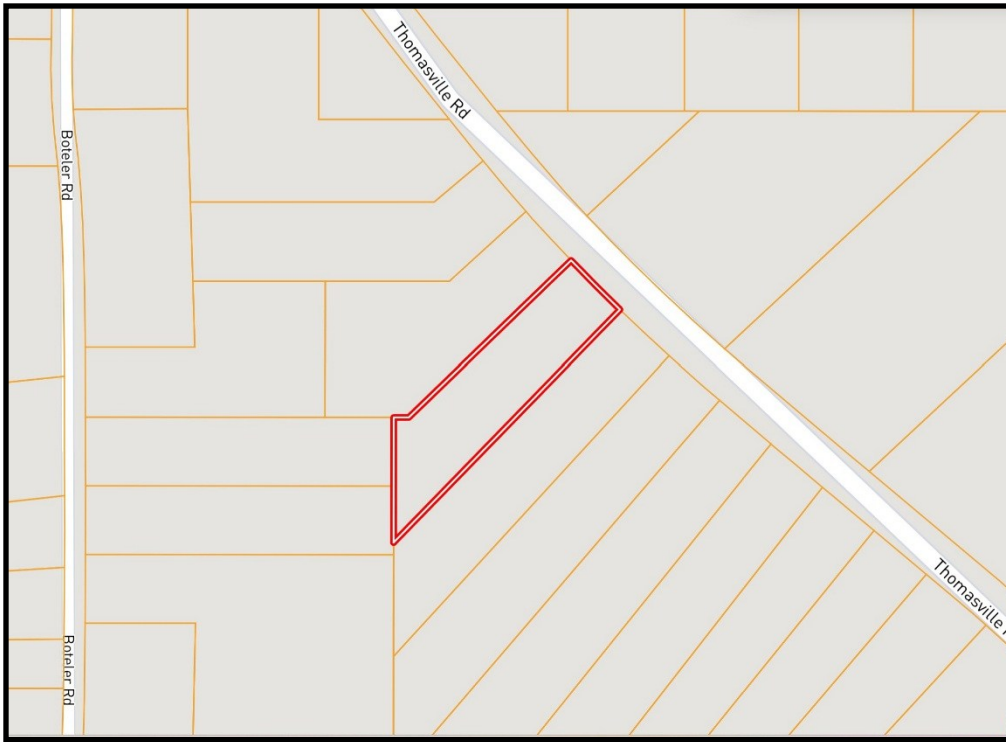
TomSmithLandandHomes.com



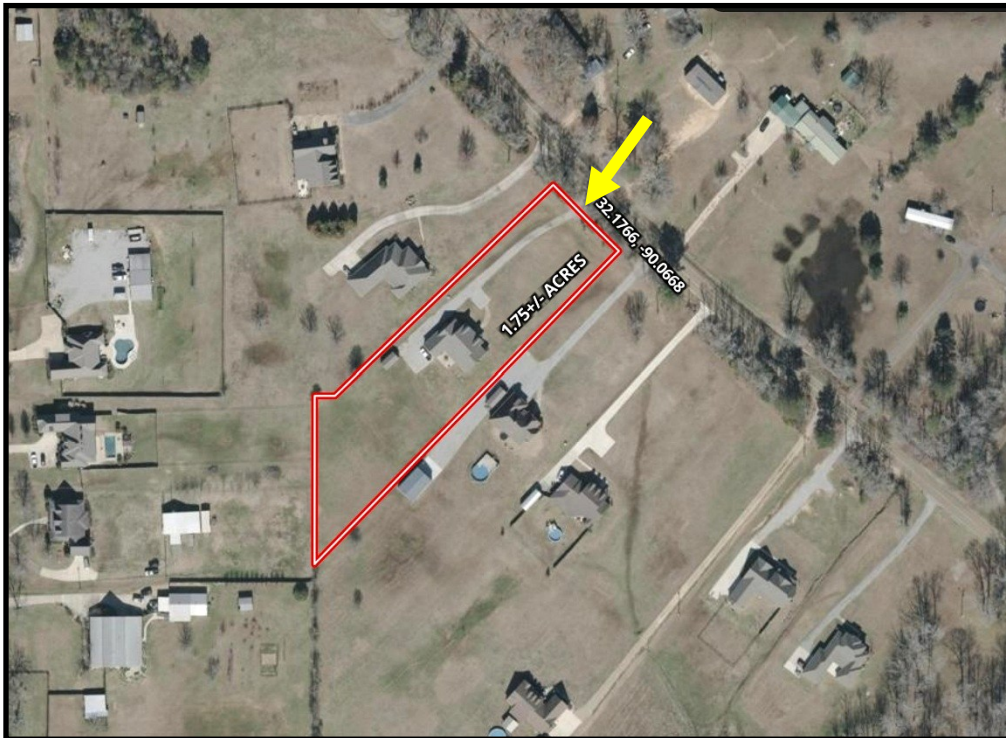
Expect More. Get More.



Information is believed to be accurate but not guaranteed.



Ownership Map



Aerial Map

[Click Here for the
Interactive Map Link](#)

A Real Estate Expert
You Can Trust!

COLBY WATSON
REALTOR®

O: 601.898.2772 C: 601.668.8096

Colby@TomSmithLand.com

TomSmithLandandHomes.com

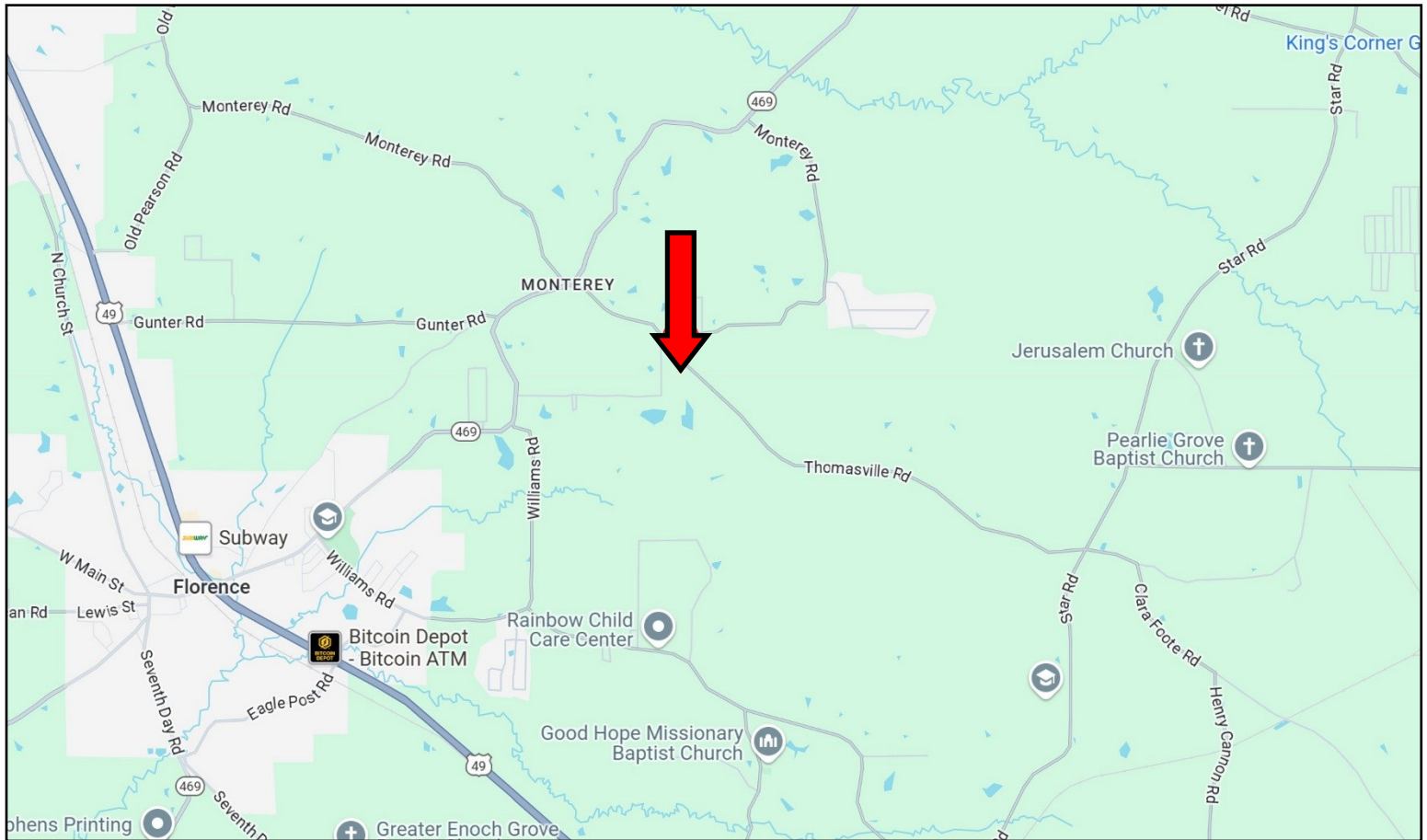


Expect More. Get More.



Information is believed to be accurate but not guaranteed.

Directional Map



**Directions from the intersection of Hwy 49 and Hwy 469 in Florence, MS: Travel Hwy 469 for 2.7 miles. Turn right onto Boteler Road and travel 1.4 miles. Turn right onto Thomasville Road. After 0.3 miles, the home will be on the right.
749 Thomasville Road, Florence, MS 39073—Click for Google Map Link**



COLBY
WATSON

REALTOR®

Office: 601.898.2772

Cell: 601.668.8096

Colby@TomSmithLand.com



Expect More. Get More.

A Real Estate Expert You Can Trust

TomSmithLandandHomes.com

Information is believed to be accurate but not guaranteed.

