

4 Bed, 2 Bath Home | 1409 Brierwood Street, Cleveland, MS 38732

\$215,000



With a new roof, updated kitchen with stainless steel appliances, and screened-in porch, this home has excellent features inside & out! The kitchen offers plenty of storage space, beautiful countertops, and tile floors. The primary bedroom has a spacious en-suite bathroom with a walk-in shower and a large jetted tub. A set of French doors separates the primary bedroom from the screened-in porch. The additional bathroom offers a shower-tub combo. A shed provides functionality and storage space for outdoor equipment in the backyard. Don't miss your chance to experience the comfort of this beautiful home—call Tracey Bell today to schedule your private showing!



**TRACEY
BELL**

MANAGING BROKER

Office: 662.441.2500

Cell: 662.719.4720

Tracey@TomSmithLand.com



Expect More. Get More.

A Real Estate Expert You Can Trust

TomSmithLandandHomes.com

Information is believed to be accurate but not guaranteed.





A Real Estate Expert
You Can Trust!

TRACEY BELL

MANAGING BROKER

O: 662.441.2500 C: 662.719.4720

Tracey@TomSmithLand.com

TomSmithLandandHomes.com

**Tom
Smith
LAND AND
HOMES**

Expect More. Get More.

LandReport
2011-2024
NATIONAL
BEST
BROKERAGES

Information is believed to be accurate but not guaranteed.



A Real Estate Expert
You Can Trust!

TRACEY BELL

MANAGING BROKER

O: 662.441.2500 C: 662.719.4720

Tracey@TomSmithLand.com

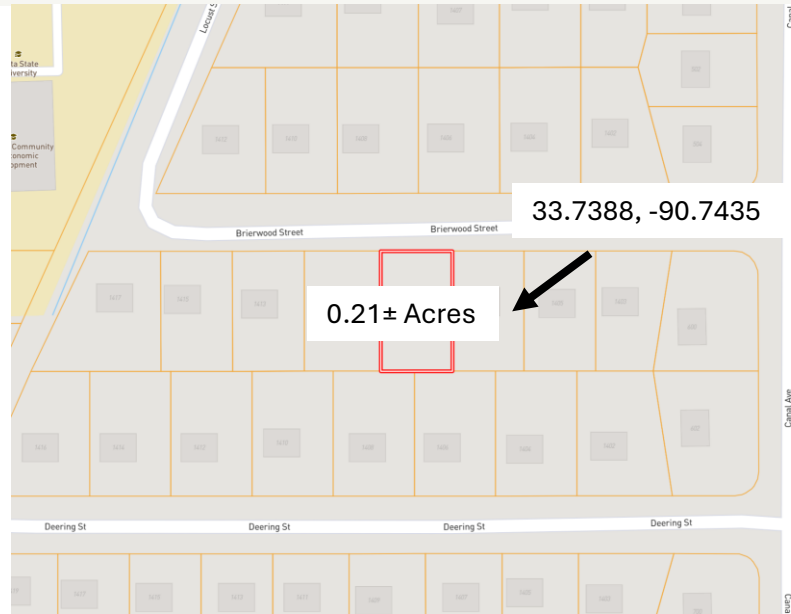
TomSmithLandandHomes.com

**Tom
Smith
LAND AND
HOMES**

Expect More. Get More.

2011-2024
NATIONAL
BEST
BROKERAGES

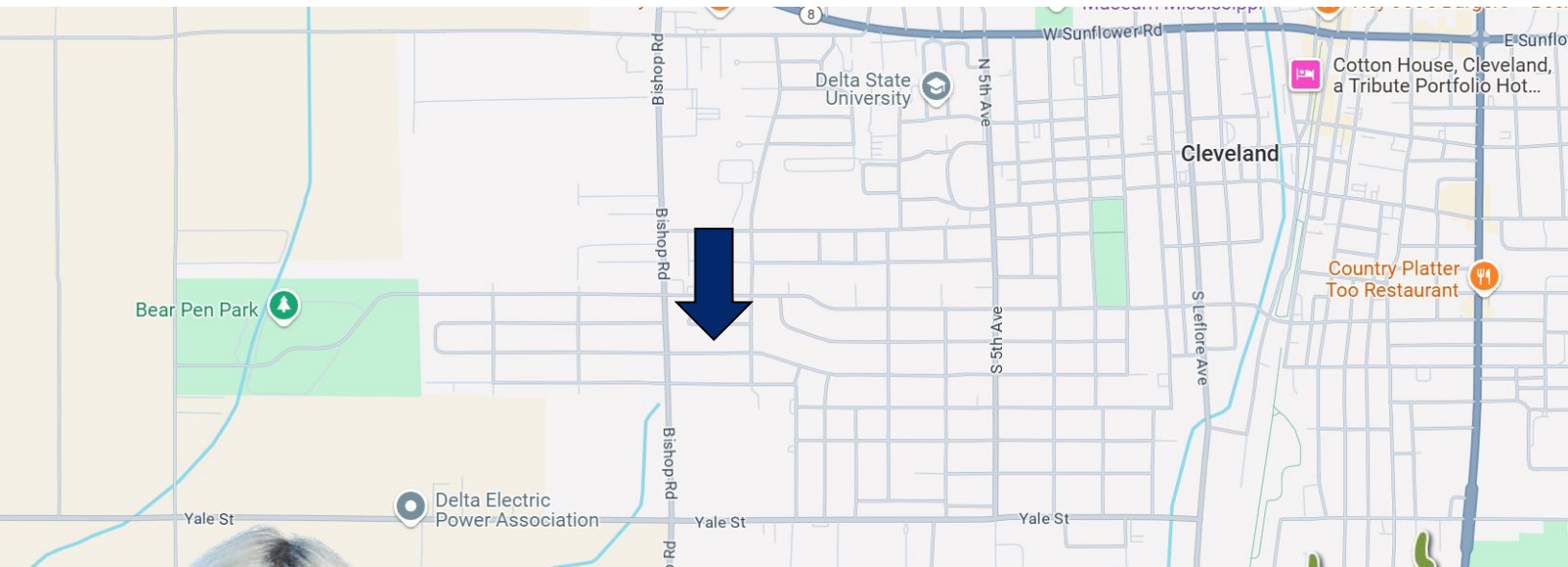
Information is believed to be accurate but not guaranteed.



Directions from Hwy 8 & Hwy 61 in Cleveland, MS: Travel west on Hwy 8 for 1.3 miles. Turn left onto W. Sunflower Road and travel 0.2 miles. Turn left onto Canal Avenue and travel 0.6 miles. Turn right onto Brierwood Street. After 0.6 miles, the home will be on the left.

Address: 1 409 Brierwood Street, Cleveland, MS 38732

[Google Maps](#) [Link](#)



**TRACEY
BELL**

MANAGING BROKER

Office: 662.441.2500

Cell: 662.719.4720

Tracey@TomSmithLand.com



Expect More. Get More.

A Real Estate Expert You Can Trust

TomSmithLandandHomes.com

Information is believed to be accurate but not guaranteed.

