

Investment Opportunity!

Coahoma County Commercial Property

\$150,000



17965 Highway 61 N Lyon, MS 38645

This Commercial property for sale at 17965 Hwy 61 N in Lyon, MS, offers great potential for renovation and would be an excellent investment opportunity! This Stop Shop Gas Station has excellent visibility and easy access from the highway. It includes a two-bedroom, one-bathroom living space, ideal for owner-operators or staff accommodations. The property spans a spacious 2.20 acres, offering plenty of room for expansion or additional commercial uses. Additionally, a convenient shed is included for extra storage of supplies or equipment. This property presents a fantastic opportunity for entrepreneurs looking to invest in a business with the potential for renovation and growth in Coahoma County. Call Anthony today to schedule a private showing!



**ANTHONY
STEEN**
REALTOR®

Office: 601.898.2772

Cell: 662.645.5151

Anthony@TomSmithLand.com



Expect More. Get More.

A Real Estate Expert You Can Trust

TomSmithLandandHomes.com

Information is believed to be accurate but not guaranteed.





A Real Estate Expert
You Can Trust!

ANTHONY STEEN

REALTOR®

O: 601.898.2772 C: 662.645.5151

Anthony@TomSmithLand.com

TomSmithLandandHomes.com

**Tom
Smith**
**LAND AND
HOMES**

Expect More. Get More.

LandReport
2011-2024
BEST
BROKERAGES

Information is believed to be accurate but not guaranteed.



A Real Estate Expert
You Can Trust!

ANTHONY STEEN

REALTOR®

O: 601.898.2772 C: 662.645.5151

Anthony@TomSmithLand.com

TomSmithLandandHomes.com



Expect More. Get More.



Information is believed to be accurate but not guaranteed.



A Real Estate Expert
You Can Trust!

ANTHONY STEEN
REALTOR®
O: 601.898.2772 C: 662.645.5151
Anthony@TomSmithLand.com
TomSmithLandandHomes.com

Tom Smith
LAND AND HOMES
Expect More. Get More.

LandReport
2011-2024
BEST
BROKERAGES

Information is believed to be accurate but not guaranteed.



A Real Estate Expert
You Can Trust!

ANTHONY STEEN
REALTOR®
O: 601.898.2772 C: 662.645.5151
Anthony@TomSmithLand.com
TomSmithLandandHomes.com

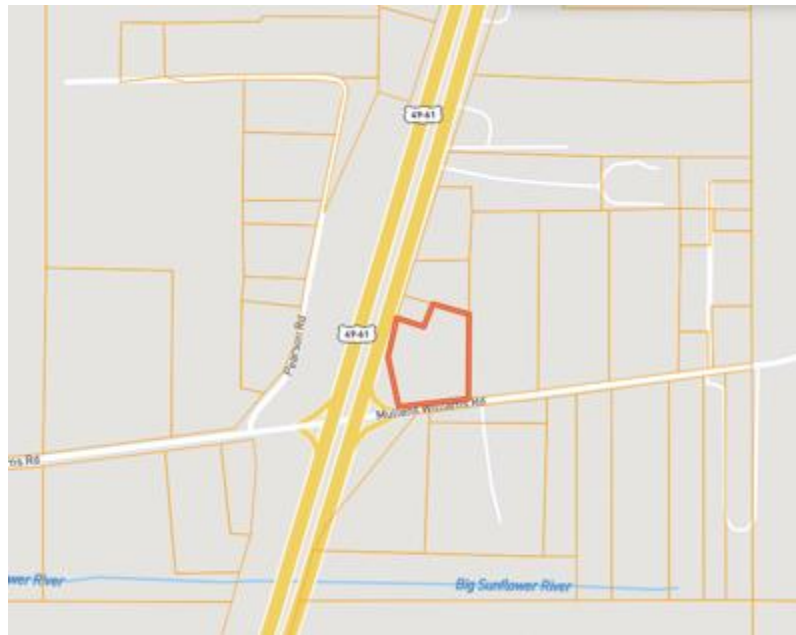
**Tom
Smith
LAND AND
HOMES**
Expect More. Get More.

LandReport
2011-2024
BEST
BROKERAGES

Information is believed to be accurate but not guaranteed.

MAPS

[Click for the Interactive Map](#)

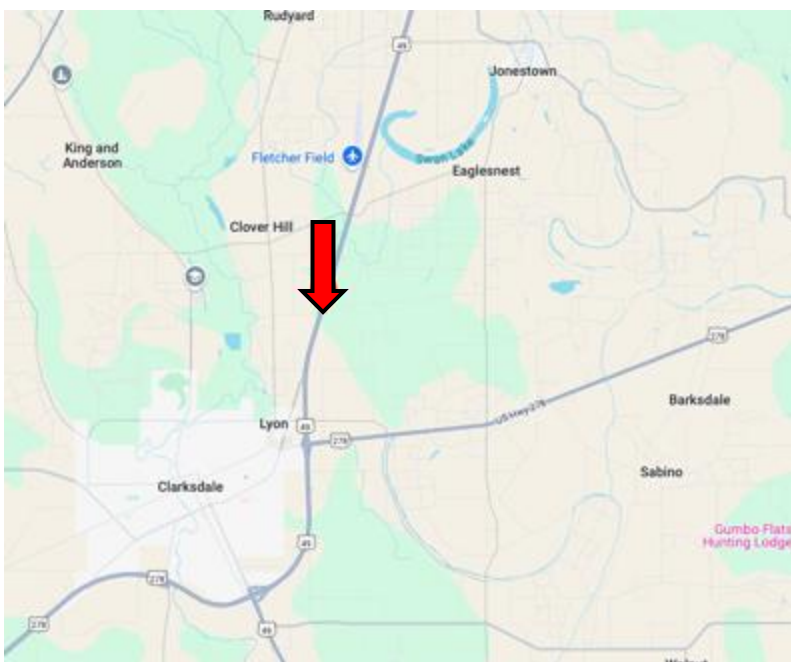


Address: 17965 Highway
61 N Lyon, MS 38645

Directions from US-61 & US 49 in Clarksdale, MS:

Travel northeast on US-61
N. for 6.2 miles. The
property will be on the
right.

[Google Map Link](#)



**ANTHONY
STEEN**

REALTOR®

Office: 601.898.2772

Cell: 662.645.5151

Anthony@TomSmithLand.com



Expect More. Get More.

A Real Estate Expert You Can Trust

TomSmithLandandHomes.com

Information is believed to be accurate but not guaranteed.

