

Neshoba County Fair Classic

Philadelphia, MS
Cabin 320



\$449,000

Located on the historic Neshoba County Fair Racetrack, Cabin 320 has been family-owned since 1962. This cabin offers wonderful, unobstructed views of the entire racetrack. It has 10 beds and is suited to sleep 10-18. It also comes furnished with a refrigerator/freezer, washer/dryer, oven/stovetop, and kitchen table. While away from the hustle and bustle of Founder's Square and the Midway, they are a brief walk away. Whether you want to watch the races, listen to the Grandstand music, or sip lemonade on the front porch with family and friends, this location offers that and more! Call Josh to schedule your showing today!



**JOSH
WREN**

REALTOR®

Office: 601.898.2772

Cell: 601.497.9440

Josh@TomSmithLand.com



Expect More. Get More.

A Real Estate Expert You Can Trust

TomSmithLandandHomes.com

Information is believed to be accurate but not guaranteed.



Watch the Action From Your Porch!



A Real Estate Expert
You Can Trust!

JOSH WREN
REALTOR®

O: 601.898.2772 C: 601.497.9440

Josh@TomSmithLand.com

TomSmithLandandHomes.com



Expect More. Get More.

Information is believed to be accurate but not guaranteed.





A Real Estate Expert
You Can Trust!

JOSH WREN
REALTOR®

O: 601.898.2772 C: 601.497.9440

Josh@TomSmithLand.com

TomSmithLandandHomes.com

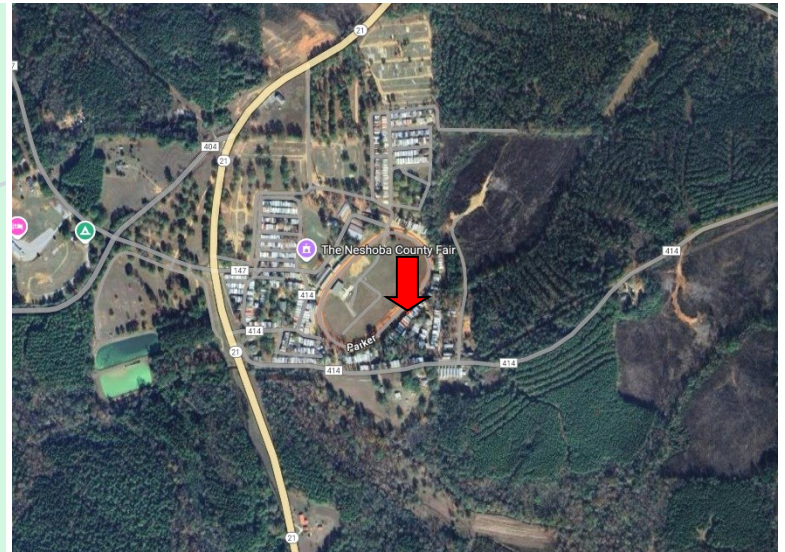
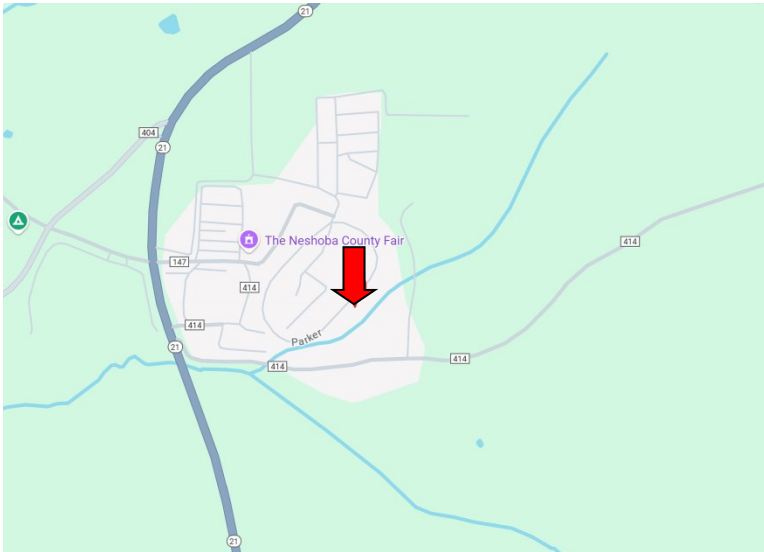
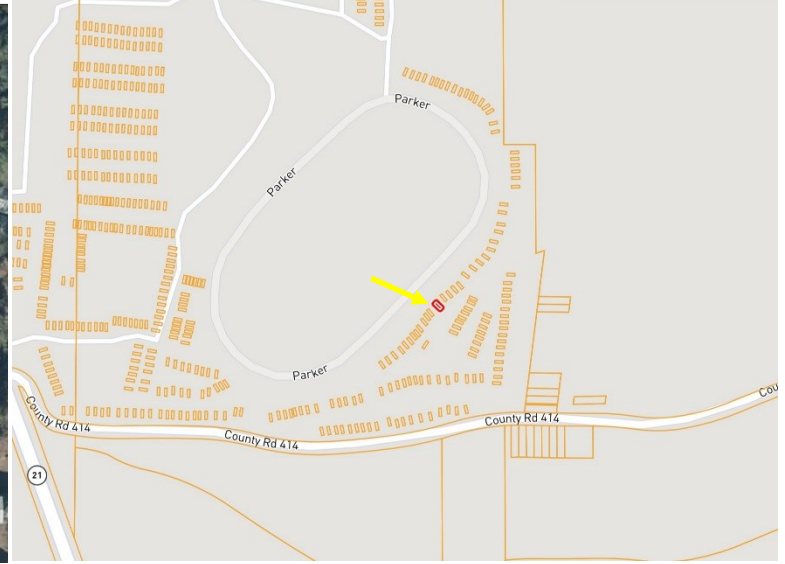
**Tom
Smith**
LAND AND
HOMES

Expect More. Get More.

Information is believed to be accurate but not guaranteed.

1000Report
2011-2024
NATIONAL
BEST
BROKERAGES

MAPS | [CLICK HERE FOR THE LANDID INTERACTIVE MAP LINK](#)



Directions from intersection of Hwy 16 and Hwy 15 in Philadelphia, MS: Travel Highway 15 S for 2.1 miles. Turn right onto Highway 485 and travel 2.9 miles. Turn right onto Road 422 and travel 1.4 miles. Turn right onto Highway 21 S. After 0.4 miles, you will arrive at the Neshoba County Fair. 16800 Highway 21 S, Philadelphia, MS 39350 - [Google Map Link](#)



**JOSH
WREN**

REALTOR®

Office: 601.898.2772

Cell: 601.497.9440

Josh@TomSmithLand.com



Expect More. Get More.

A Real Estate Expert You Can Trust

TomSmithLandandHomes.com

Information is believed to be accurate but not guaranteed.

