

# Neshoba County Fair Classic

*Philadelphia, MS*  
**Cabin 320**



**\$375,000**

Located on the historic Neshoba County Fair Racetrack, Cabin 320 has been family-owned since 1962. This cabin offers wonderful, unobstructed views of the entire racetrack. It has 10 beds and is suited to sleep 10-18. It also comes furnished with a refrigerator/freezer, washer/dryer, oven/stovetop, and kitchen table. While away from the hustle and bustle of Founder's Square and the Midway, they are a brief walk away. Whether you want to watch the races, listen to the Grandstand music, or sip lemonade on the front porch with family and friends, this location offers that and more! Call Josh to schedule your showing today!



**JOSH  
WREN**

REALTOR®

Office: 601.898.2772

Cell: 601.497.9440

Josh@TomSmithLand.com



Expect More. Get More.

**A Real Estate Expert You Can Trust**

TomSmithLandandHomes.com

Information is believed to be accurate but not guaranteed.







**A Real Estate Expert**  
*You Can Trust!*

**JOSH WREN**  
REALTOR®

O: 601.898.2772 C: 601.497.9440

Josh@TomSmithLand.com

TomSmithLandandHomes.com

**Tom Smith**  
LAND AND  
HOMES

Expect More. Get More.

2011-2024  
BEST  
BROKERAGES

Information is believed to be accurate but not guaranteed.



# Watch the Action From Your Porch!



**A Real Estate Expert**  
*You Can Trust!*

**JOSH WREN**  
REALTOR®

O: 601.898.2772 C: 601.497.9440

Josh@TomSmithLand.com

TomSmithLandandHomes.com



Expect More. Get More.

Information is believed to be accurate but not guaranteed.







## A Real Estate Expert *You Can Trust!*

**JOSH WREN**  
REALTOR®

O: 601.898.2772 C: 601.497.9440

Josh@TomSmithLand.com

TomSmithLandandHomes.com

**Tom  
Smith**  
LAND AND  
HOMES

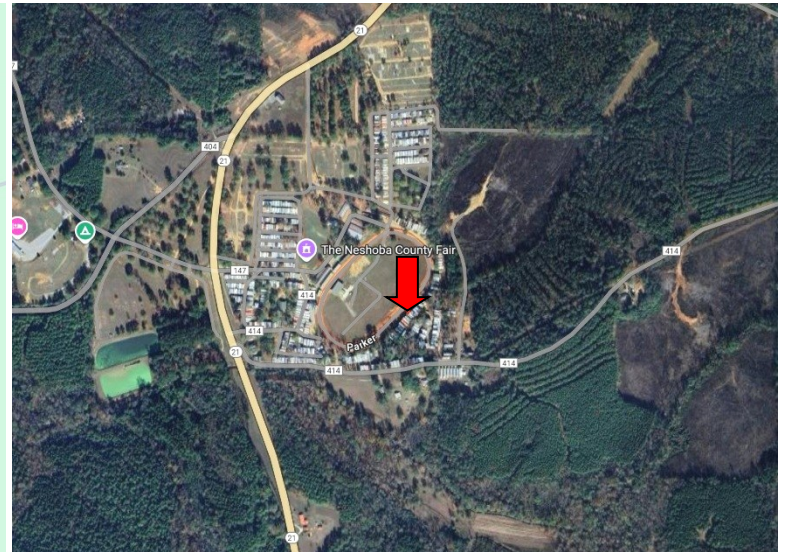
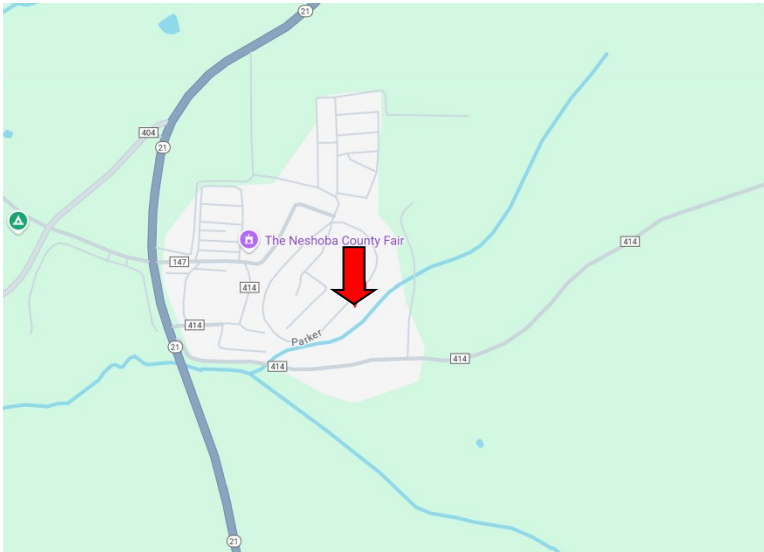
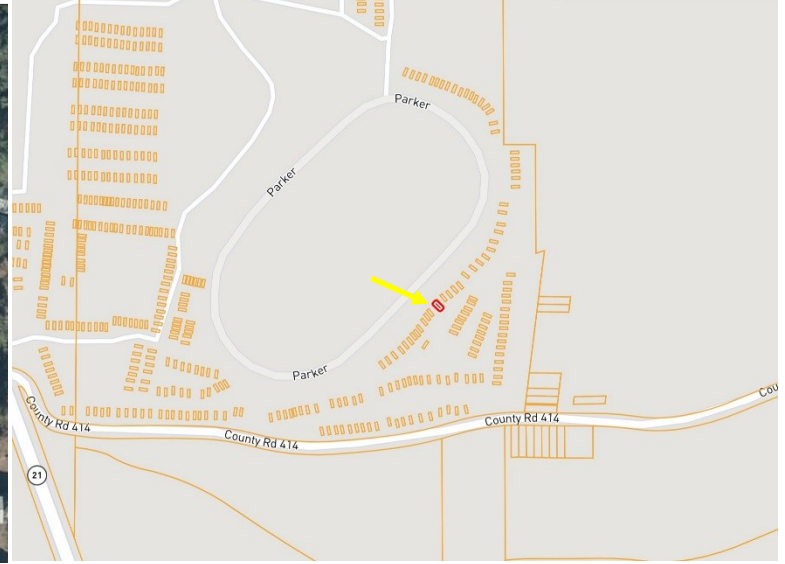
Expect More. Get More.

Information is believed to be accurate but not guaranteed.

1000Report  
2011-2024  
NATIONAL  
BEST  
BROKERAGES



# MAPS | [CLICK HERE FOR THE LANDID INTERACTIVE MAP LINK](#)



**Directions from intersection of Hwy 16 and Hwy 15 in Philadelphia, MS: Travel Highway 15 S for 2.1 miles. Turn right onto Highway 485 and travel 2.9 miles. Turn right onto Road 422 and travel 1.4 miles. Turn right onto Highway 21 S. After 0.4 miles, you will arrive at the Neshoba County Fair. 16800 Highway 21 S, Philadelphia, MS 39350 - [Google Map Link](#)**



**JOSH  
WREN**

REALTOR®

Office: 601.898.2772

Cell: 601.497.9440

[Josh@TomSmithLand.com](mailto:Josh@TomSmithLand.com)



Expect More. Get More.

**A Real Estate Expert You Can Trust**

[TomSmithLandandHomes.com](http://TomSmithLandandHomes.com)

Information is believed to be accurate but not guaranteed.

