

Forever Home with Backyard Retreat

23 Oakridge Road, Boyle, MS 38730

\$329,000



Welcome to **23 Oakridge Drive** in Boyle, Bolivar County, MS. This stunning 3-bedroom, 2-bathroom home was built in 2001 and has many features throughout the 2,080± SF you do not want to miss! The gas fireplace in the living room is surrounded by built-in shelves and cabinetry, which makes the room cozy. Many of the windows in the home are complemented by plantation shutters, adding to the charm and functionality of the home. In the kitchen, you will find granite countertops and ample storage space. The breakfast bar divides the kitchen from the dining room, but it still allows for the open-concept feel.

The primary bedroom has a spacious en-suite bathroom with two vanities, a walk-in shower, a soaking tub, and a large walk-in closet. The two additional bedrooms are separated by a Jack-and-Jill bathroom.

The backyard is a must-see! As you step outside of the sunroom, the double doors open to the covered patio. It expands beyond the roofline to a pergola with additional entertainment space. A wooden privacy fence complements the immaculate landscaping. During storms, two French drains in the backyard allow for proper drainage, and a generator is connected in case of power outages.

**TRACEY
BELL**

MANAGING BROKER

Office: 662.441.2500

Cell: 662.719.4720

Tracey@TomSmithLand.com



Expect More. Get More.

A Real Estate Expert You Can Trust

TomSmithLandandHomes.com

Information is believed to be accurate but not guaranteed.





A Real Estate Expert
You Can Trust!

TRACEY BELL

MANAGING BROKER

O: 662.441.2500 C: 662.719.4720

Tracey@TomSmithLand.com

TomSmithLandandHomes.com

Tom Smith
LAND AND HOMES

Expect More. Get More.

LandAgent
2011-2024
NATIONAL
BEST
BROKERAGES

Information is believed to be accurate but not guaranteed.



The primary suite features a spacious walk-in closet with ample storage space and an en-suite bathroom with two separate vanities, a walk-in shower, and a soaking tub.



A Real Estate Expert
You Can Trust!

TRACEY BELL

MANAGING BROKER

O: 662.441.2500 C: 662.719.4720

Tracey@TomSmithLand.com

TomSmithLandandHomes.com

Tom Smith
LAND AND HOMES

Expect More. Get More.

LandAgent
2011-2024
NATIONAL
BEST
BROKERAGES

Information is believed to be accurate but not guaranteed.



**A Real Estate Expert
You Can Trust!**

TRACEY BELL

MANAGING BROKER

O: 662.441.2500 C: 662.719.4720

Tracey@TomSmithLand.com

TomSmithLandandHomes.com

**Tom
Smith
LAND AND
HOMES**

Expect More. Get More.

LandAgent
2011-2024
NATIONAL
BEST
BROKERAGES

Information is believed to be accurate but not guaranteed.



A Real Estate Expert
You Can Trust!

TRACEY BELL

MANAGING BROKER

O: 662.441.2500 C: 662.719.4720

Tracey@TomSmithLand.com

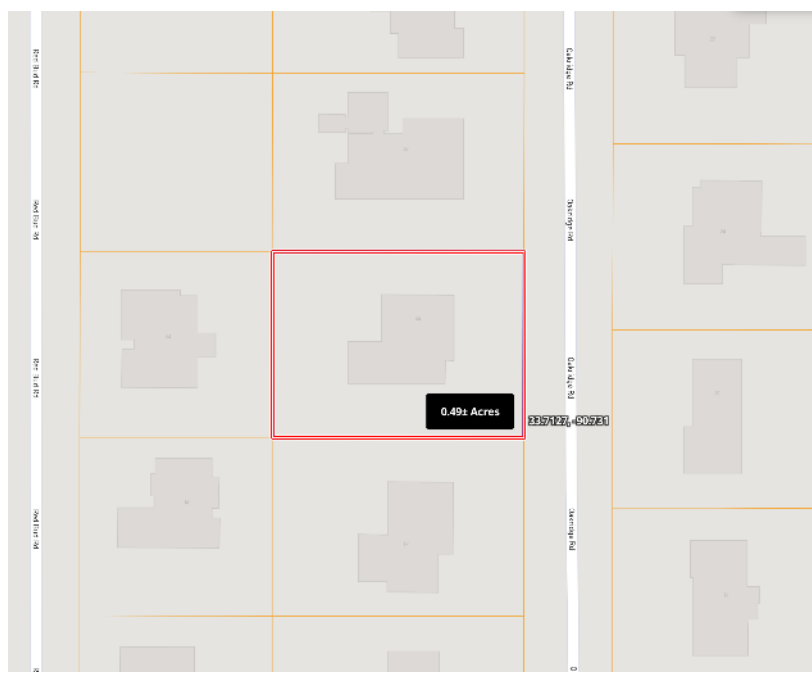
TomSmithLandandHomes.com

Tom Smith
LAND AND HOMES

Expect More. Get More.

LandAgent
2011-2024
NATIONAL
BEST
BROKERAGES

Information is believed to be accurate but not guaranteed.



Directions from Hwy 8 & Hwy 61 in Cleveland: Travel south on Hwy 61 for 2 miles. Turn right onto Laughlin Road and travel 0.8 miles. Turn left onto Oakridge Road, and the home will be on your right after 0.4 miles.

Address: 23 Oakridge Road, Cleveland, MS 38732

[Google Maps Link](#)



**TRACEY
BELL**

MANAGING BROKER

Office: 662.441.2500

Cell: 662.719.4720

Tracey@TomSmithLand.com



Expect More. Get More.

A Real Estate Expert You Can Trust

TomSmithLandandHomes.com

Information is believed to be accurate but not guaranteed.

