

# Diverse Recreational Tract 61 +/- ac in Greene County, MS



**\$198,250**



**BRADY  
RICHARDSON**  
REALTOR®

Office: 601.898.2772

Cell: 662.418.8791

[Brady@TomSmithLand.com](mailto:Brady@TomSmithLand.com)



Expect More. Get More.

**A Real Estate Expert You Can Trust**

[TomSmithLandandHomes.com](http://TomSmithLandandHomes.com)

Information is believed to be accurate but not guaranteed.







This 61 +/- acre recreational property in the McLain community of Greene County, Mississippi, offers a rare combination of road frontage, river access, and excellent outdoor features. With 3,455 +/- feet of frontage on US-98 and 685 +/- feet along the Leaf River, it's ideal for hunting, fishing, boating, and more. The timber was harvested about six years ago and now features a great internal road system, food plots, and a cypress lake perfect for duck hunting. The property is also set up for deer and turkey hunting, offering year-round opportunities for outdoor recreation. The Leaf River provides excellent spots for fishing, swimming, and boating, making this a true all-around recreational retreat. Located just 2 hours from New Orleans, 1 hour from Mobile, and 1 hour from Biloxi, this property is close enough for quick weekend getaways. Access is through a deeded easement off Old Hwy 24. Call Brady today to schedule a private showing!

## A Real Estate Expert *You Can Trust!*

**BRADY RICHARDSON**  
REALTOR®

O: 601.898.2772 C: 662.418.8791

Brady@TomSmithLand.com

TomSmithLandandHomes.com







## A Real Estate Expert *You Can Trust!*

**BRADY RICHARDSON**  
REALTOR®

O: 601.898.2772 C: 662.418.8791

Brady@TomSmithLand.com

TomSmithLandandHomes.com



Expect More. Get More.



Information is believed to be accurate but not guaranteed.





## A Real Estate Expert *You Can Trust!*

**BRADY RICHARDSON**  
REALTOR®

O: 601.898.2772 C: 662.418.8791

Brady@TomSmithLand.com

TomSmithLandandHomes.com



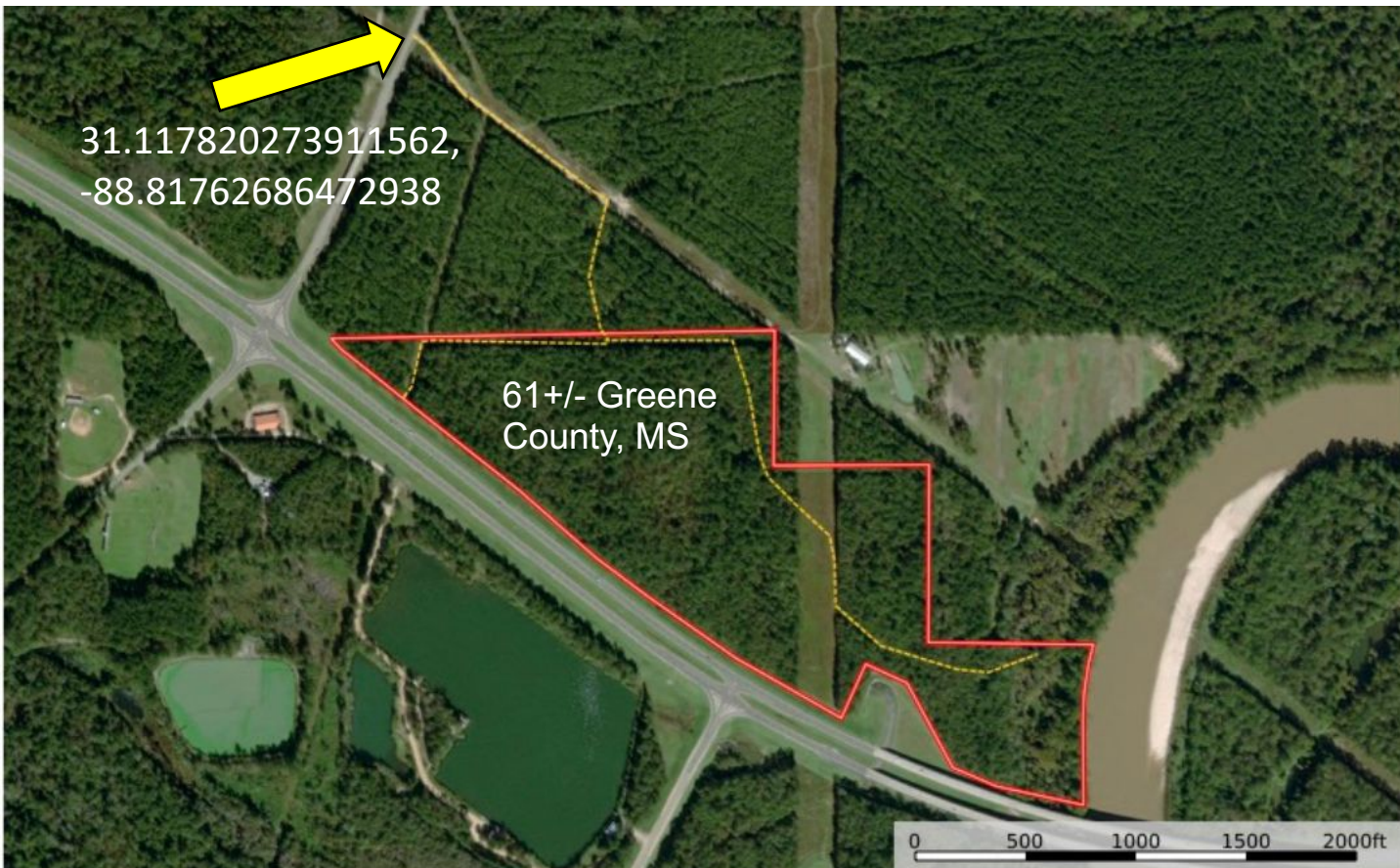
Expect More. Get More.



Information is believed to be accurate but not guaranteed.



# Aerial Map



[Land ID Map Link](#)

**A Real Estate Expert**  
*You Can Trust!*

**BRADY RICHARDSON**  
REALTOR®

O: 601.898.2772 C: 662.418.8791

Brady@TomSmithLand.com

TomSmithLandandHomes.com



Expect More. Get More.

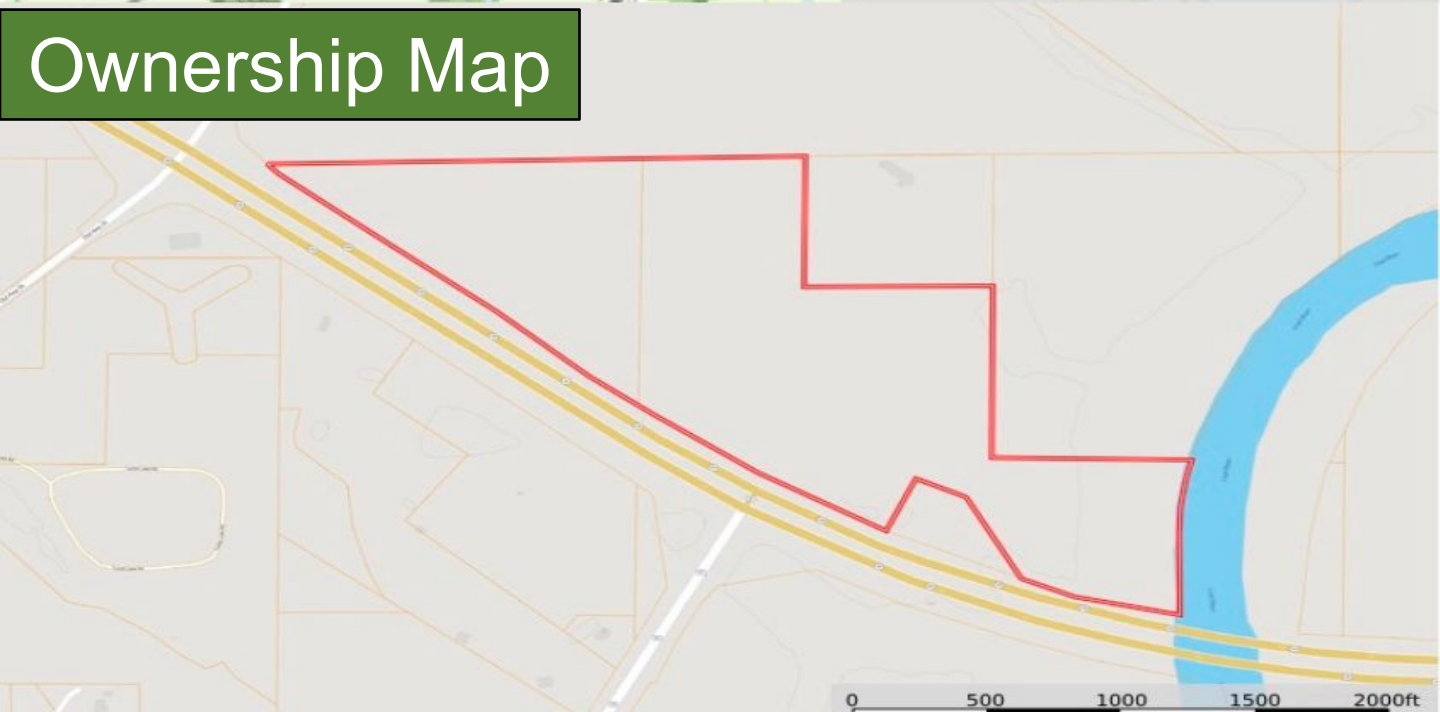
Information is believed to be accurate but not guaranteed.



# Topo Map



# Ownership Map



**A Real Estate Expert**  
*You Can Trust!*

**BRADY RICHARDSON**  
REALTOR®

O: 601.898.2772 C: 662.418.8791

Brady@TomSmithLand.com

TomSmithLandandHomes.com



Expect More. Get More.



Information is believed to be accurate but not guaranteed.



# Directional Map



**Directions from the intersection of US-98 and HWY 57:**  
Head West on US-98 for .5 miles and turn right on to HWY 24. Travel for .3 miles and the property will be on your right. [Google Map Link](#)

**A Real Estate Expert**  
*You Can Trust!*

**BRADY RICHARDSON**  
REALTOR®

O: 601.898.2772 C: 662.418.8791

Brady@TomSmithLandandHomes.com

TomSmithLandandHomes.com



Expect More. Get More.

