

INVESTMENT PROPERTY

603 SOUTH BAYOU AVENUE, CLEVELAND, MS

\$39,000



This 1,136± SF home has three bedrooms and one and a half bathrooms. It can be a great addition to your Bolivar County rental portfolio or a place to call home. Additional rental properties are available, so call Tracey Bell for more details and to schedule your private showing.



**TRACEY
BELL**

MANAGING BROKER

Office: 662.441.2500

Cell: 662.719.4720

Tracey@TomSmithLand.com



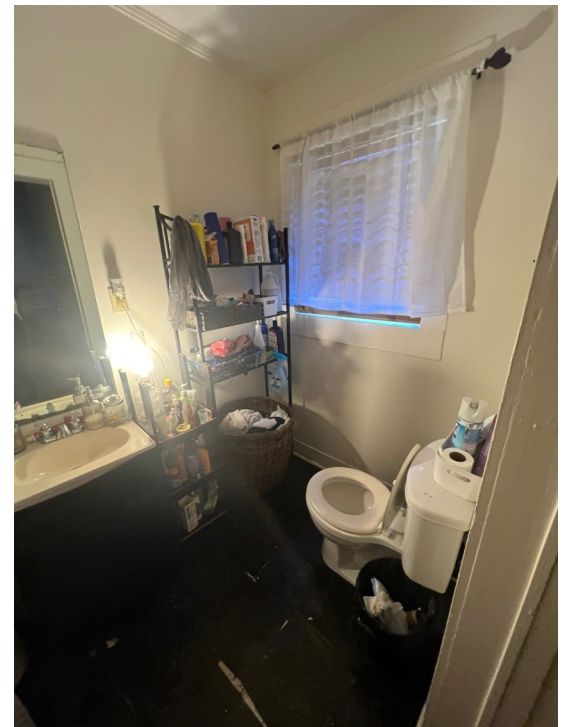
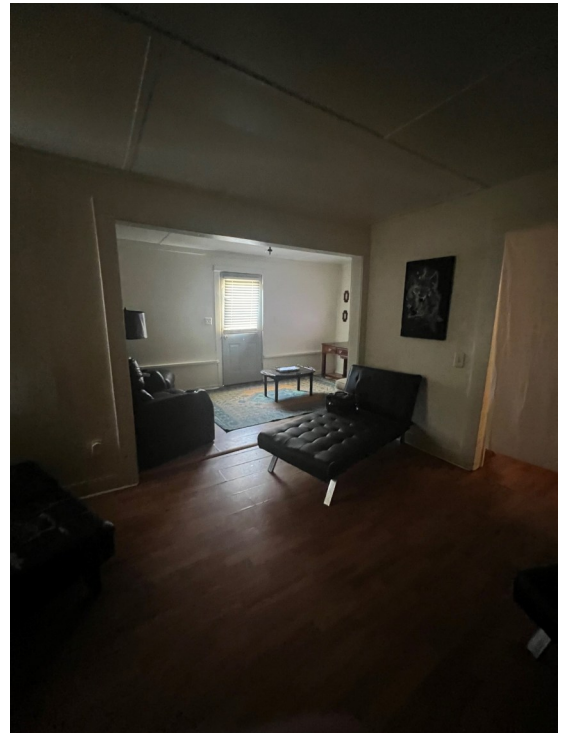
Expect More. Get More.

A Real Estate Expert You Can Trust

TomSmithLandandHomes.com

Information is believed to be accurate but not guaranteed.





**TRACEY
BELL**

MANAGING BROKER

Office: 662.441.2500

Cell: 662.719.4720

Tracey@TomSmithLand.com



A Real Estate Expert You Can Trust
TomSmithLandandHomes.com

Information is believed to be accurate but not guaranteed.



AERIAL MAP



[Click for Interactive Map](#)

**TRACEY
BELL**

MANAGING BROKER

Office: 662.441.2500

Cell: 662.719.4720

Tracey@TomSmithLand.com



A Real Estate Expert You Can Trust
TomSmithLandandHomes.com

Information is believed to be accurate but not guaranteed.



OWNERSHIP MAP



**TRACEY
BELL**

MANAGING BROKER

Office: 662.441.2500

Cell: 662.719.4720

Tracey@TomSmithLand.com

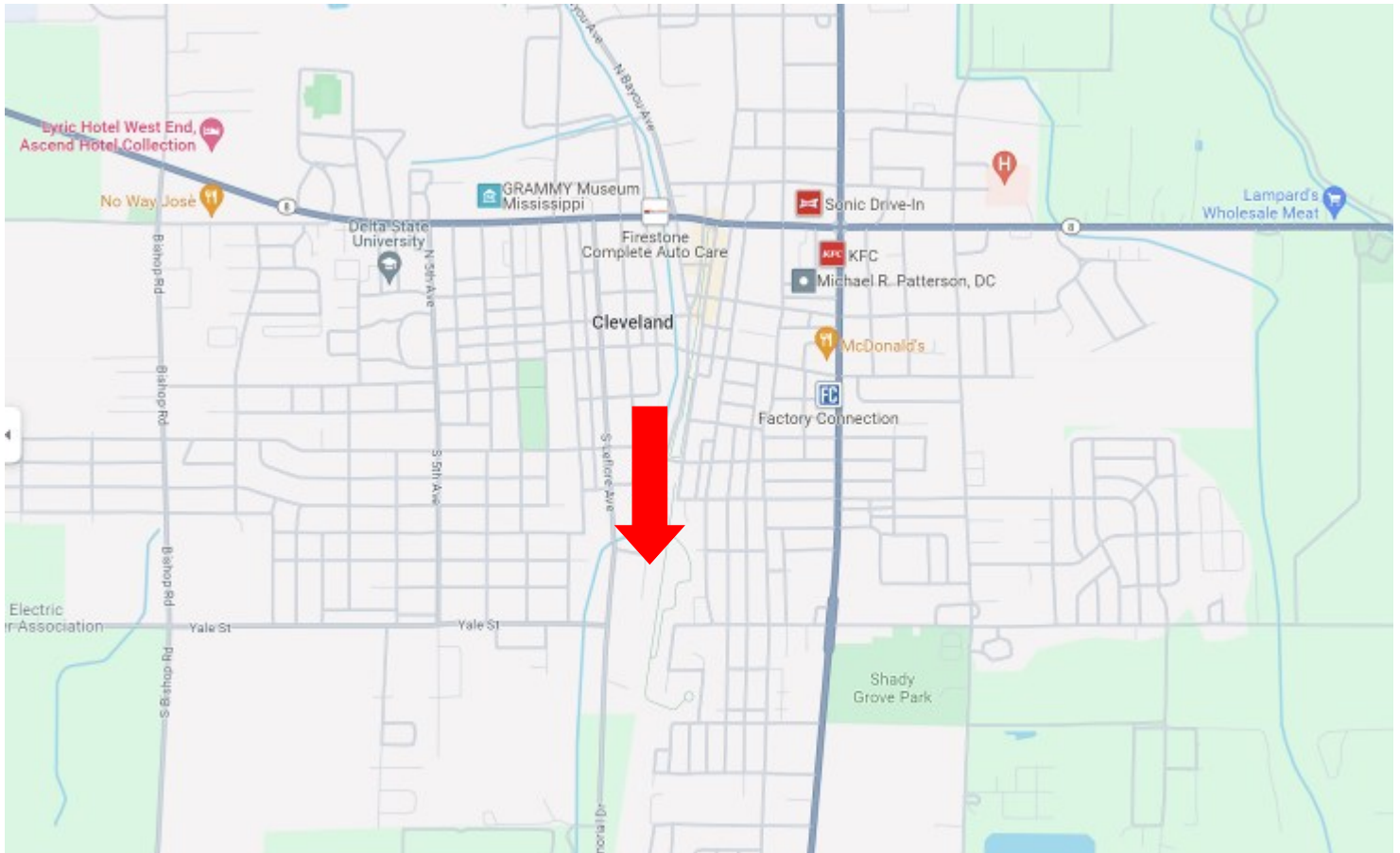


A Real Estate Expert You Can Trust
TomSmithLandandHomes.com

Information is believed to be accurate but not guaranteed.



DIRECTIONAL MAP



Address: 603 S. Bayou Avenue, Cleveland, MS 38732

Directions from Hwy 8 and Hwy 61 Cleveland, MS: Head south on N. Davis Ave for 0.6 miles before turning right on Lee Street. Travel 0.4 miles, then turn left onto S. Bayou Ave. After 0.3 miles, the property will be on the left. [Click for Google Maps.](#)



**TRACEY
BELL**

MANAGING BROKER

Office: 662.441.2500

Cell: 662.719.4720

Tracey@TomSmithLand.com



Expect More. Get More.

A Real Estate Expert You Can Trust

TomSmithLandandHomes.com

Information is believed to be accurate but not guaranteed.

