

701 S. Court Street, Cleveland, MS | \$170,000

Check out this three-bedroom, two-bathroom home built in 1940 in Cleveland, Bolivar County, MS. The house has character! The den has a gas fireplace with built-in bookshelves on both sides and French doors that look out over the front yard. The kitchen has a gas range, stainless steel appliances, a breakfast bar, floating shelves above the sink, and fabulous French doors that look out into the backyard. Delta State University is right down the road, making it convenient for students or teachers to play ball games, play tennis, go to Chick-fil-A, and go to Starbucks! Call Tracey Bell to schedule your private showing!



**TRACEY
BELL**

MANAGING BROKER

Office: 662.441.2500

Cell: 662.719.4720

Tracey@TomSmithLand.com



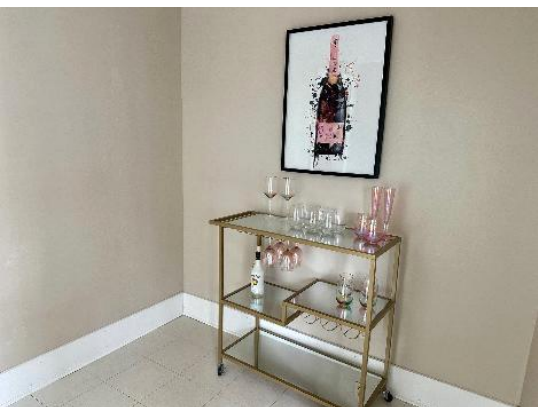
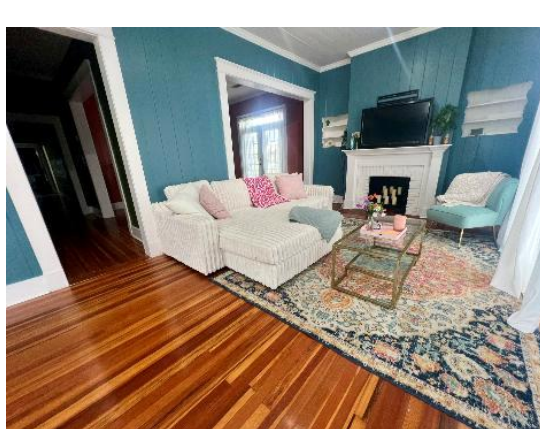
Expect More. Get More.

A Real Estate Expert You Can Trust

TomSmithLandandHomes.com

Information is believed to be accurate but not guaranteed.





**TRACEY
BELL**

MANAGING BROKER

Office: 662.441.2500

Cell: 662.719.4720

Tracey@TomSmithLand.com

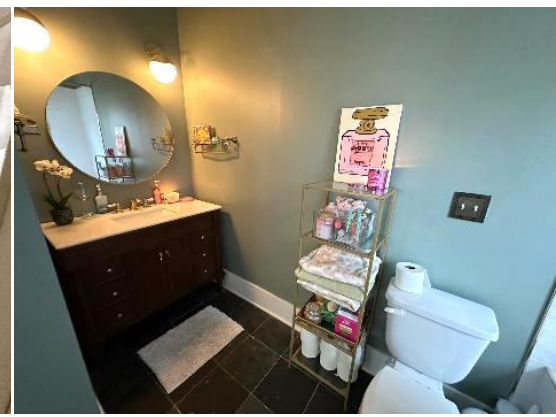


A Real Estate Expert You Can Trust

TomSmithLandandHomes.com

Information is believed to be accurate but not guaranteed.





**TRACEY
BELL**

MANAGING BROKER

Office: 662.441.2500

Cell: 662.719.4720

Tracey@TomSmithLand.com



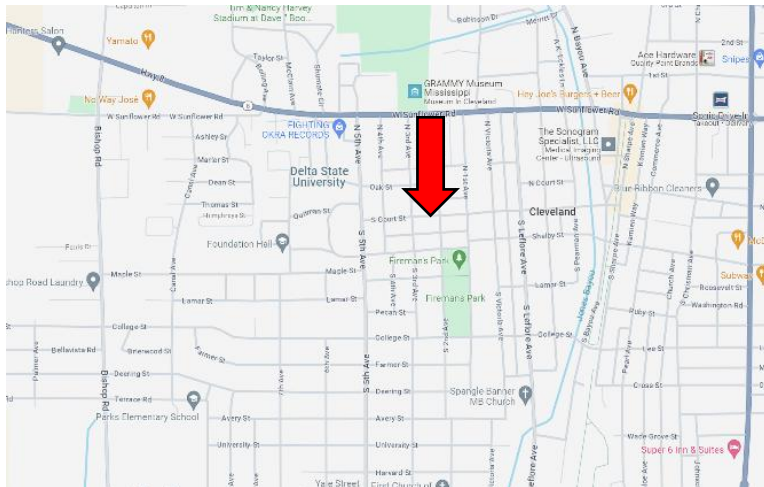
A Real Estate Expert You Can Trust
TomSmithLandandHomes.com

Information is believed to be accurate but not guaranteed.



MAPS

[Click for Interactive Map](#)



**Address: 701 South Court Street,
Cleveland, MS 38732**

Directions from Hwy 8 & Hwy 61 in Cleveland, MS:

Travel west on E. Sunflower Road for 0.7 miles. Turn left onto N. Victoria Avenue and travel 0.3 miles. Turn right onto S. Court Street. After 0.2 miles, the home will be on the right. [Click for Google Maps.](#)

**TRACEY
BELL**

MANAGING BROKER

Office: 662.441.2500

Cell: 662.719.4720

Tracey@TomSmithLand.com



Expect More. Get More.

A Real Estate Expert You Can Trust

TomSmithLandandHomes.com

Information is believed to be accurate but not guaranteed.

