

1.25± ACRES AND A HOUSE OKTIBBEHA COUNTY, MS



\$55,000

This property features a house sitting on 1.25+/- acres in Oktibbeha County, MS and is minutes from Starkville and Mississippi State University. This property could be used as a gameday home, a rental, or Airbnb for the home games. The property has a fenced in yard, a screened in front porch and is priced to sale. A property with this many possibilities, just minutes from campus is hard to find. This property is being sold "AS IS". To schedule a private showing, call or text Walker!

**WALKER
TRANUM**
REALTOR®

Office: 662.268.6333

Cell: 662.769.1442

Walker@TomSmithHomes.com



Expect More. Get More.

A Real Estate Expert You Can Trust

TomSmithLandandHomes.com

Information is believed to be accurate but not guaranteed.





**WALKER
TRANUM**
REALTOR®

Office: 662.268.6333

Cell: 662.769.1442

Walker@TomSmithHomes.com



Expect More. Get More.

A Real Estate Expert You Can Trust

TomSmithLandandHomes.com

Information is believed to be accurate but not guaranteed.



Aerial Map



Click [Here](#) for an Interactive Map Link



**WALKER
TRANUM**
REALTOR®

Office: 662.268.6333

Cell: 662.769.1442

Walker@TomSmithHomes.com



Expect More. Get More.

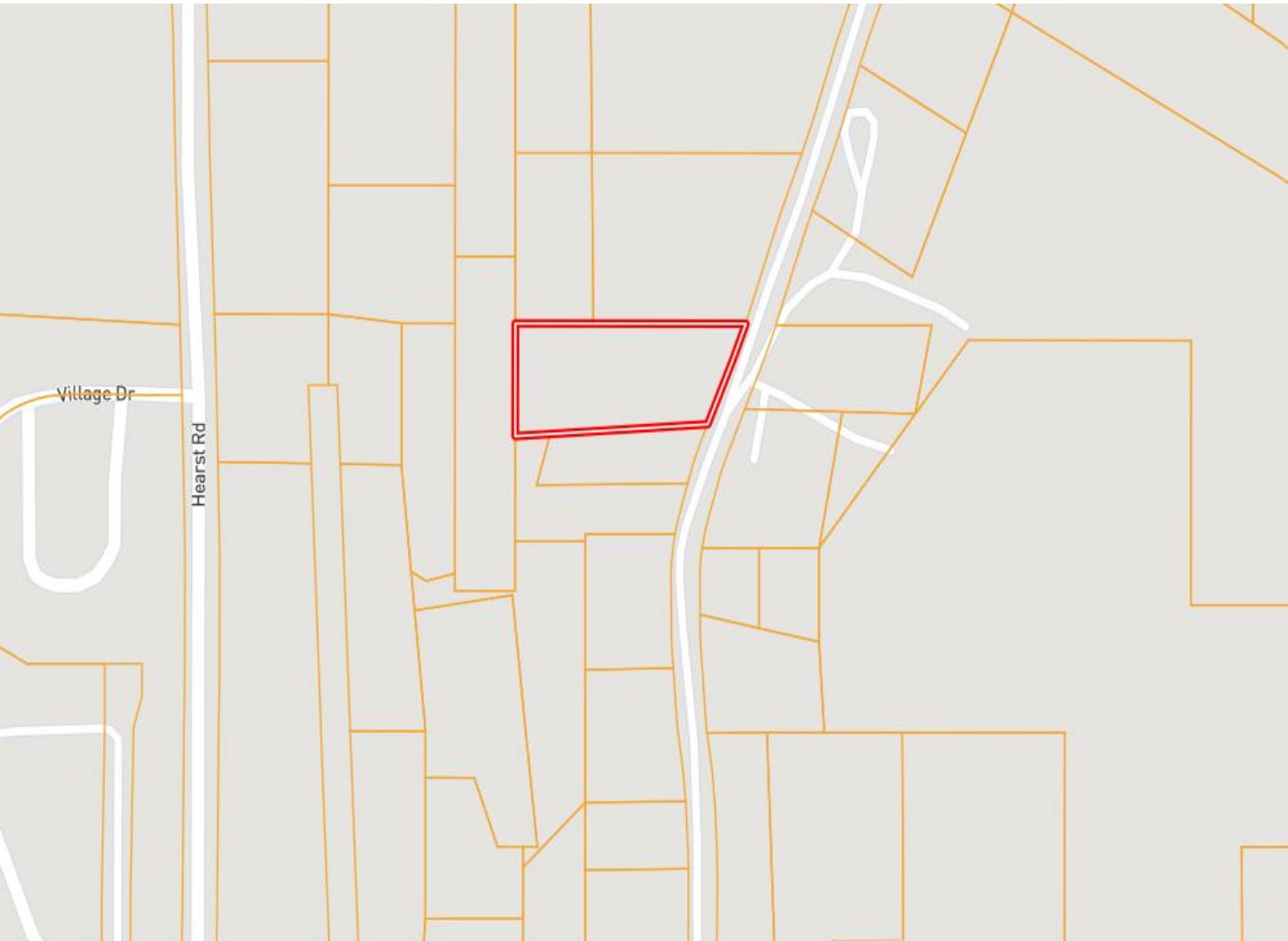
A Real Estate Expert You Can Trust

TomSmithLandandHomes.com

Information is believed to be accurate but not guaranteed.



Ownership Map



**WALKER
TRANUM**
REALTOR®

Office: 662.268.6333

Cell: 662.769.1442

Walker@TomSmithHomes.com



Expect More. Get More.

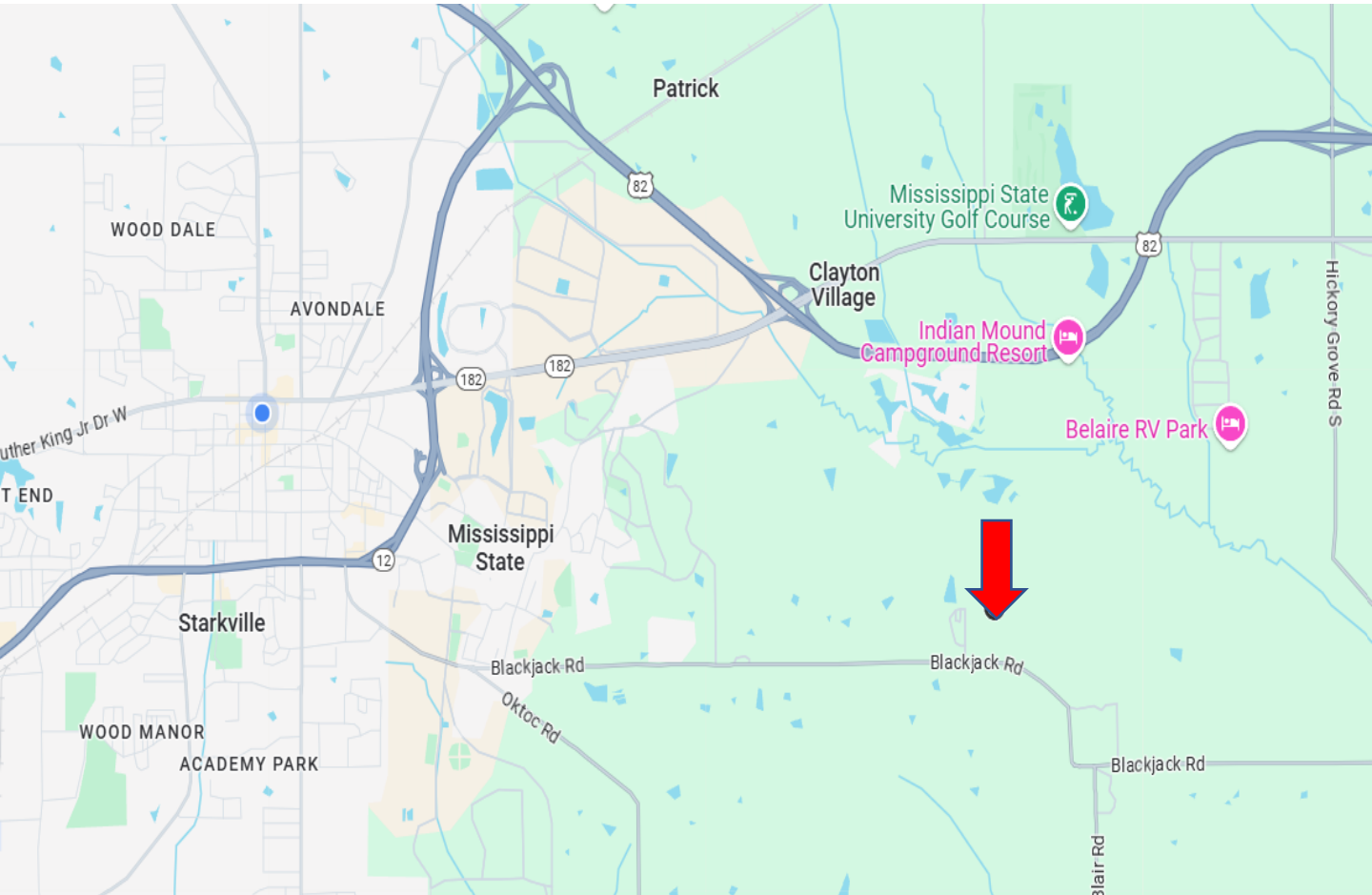
A Real Estate Expert You Can Trust

TomSmithLandandHomes.com

Information is believed to be accurate but not guaranteed.



Directional Map



Directions from Starkville, MS: Leaving Starkville, head south on North Jackson Street for .7 miles. Then turn left onto MS-12 E for .4 miles. After that turn right onto Blackjack Road for 1 mile. At the roundabout continue down Blackjack Road for 3 miles. The turn left onto Hearst Road and the property will be on your left in .3 miles. [Google Map Link](#)



**WALKER
TRANUM**
REALTOR®

Office: 662.268.6333

Cell: 662.769.1442

Walker@TomSmithHomes.com



Expect More. Get More.

A Real Estate Expert You Can Trust

TomSmithLandandHomes.com

Information is believed to be accurate but not guaranteed.

