

INVESTMENT OPPORTUNITY

Mobile Home Park in Monticello 2.5± Acres in Lawrence County



Features:

- Mixture of park-owned & tenant-owned units
- Approximately 5–6 open pads for expansion
- City water & sewer at all sites
- Internet available
- Potential for increased cash flow

\$250,000

Located within the city limits of Monticello, this mobile home park offers a mix of park-owned and tenant-owned homes across 2.5± acres in Lawrence County, MS. With 5–6 vacant pads ready for new units, each with city water and sewer already in place, this park is primed for growth. Whether you want to expand your portfolio or jump into mobile home park investing, this property offers the infrastructure and space to scale. Call Chad to schedule your tour today!



**CHAD
WILSON**

REALTOR®

Office: 601.898.2772

Cell: 601.750.1970

Chad@TomSmithLand.com



Expect More. Get More.

A Real Estate Expert You Can Trust

TomSmithLandandHomes.com

Information is believed to be accurate but not guaranteed.





A Real Estate Expert
You Can Trust!

CHAD WILSON
REALTOR®

O: 601.898.2772 C: 601.750.1970

Chad@TomSmithLand.com

TomSmithLandandHomes.com



Expect More. Get More.



Information is believed to be accurate but not guaranteed.



A Real Estate Expert
You Can Trust!

CHAD WILSON
REALTOR®

O: 601.898.2772 C: 601.750.1970

Chad@TomSmithLand.com

TomSmithLandandHomes.com

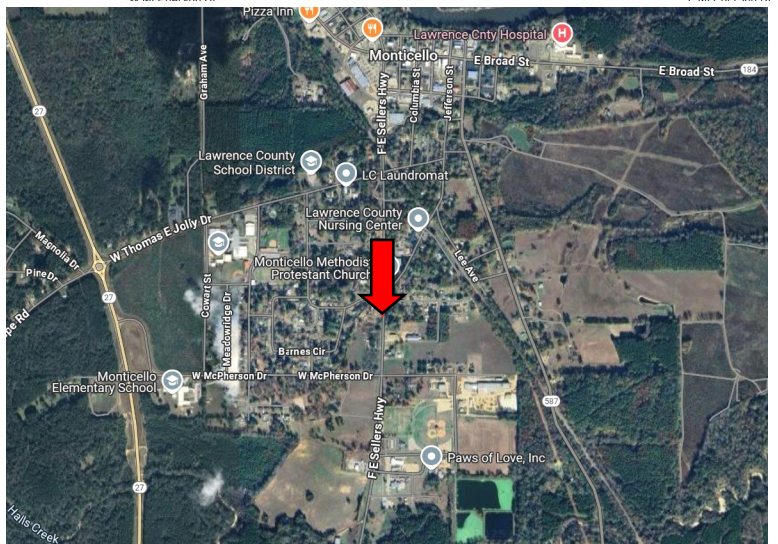
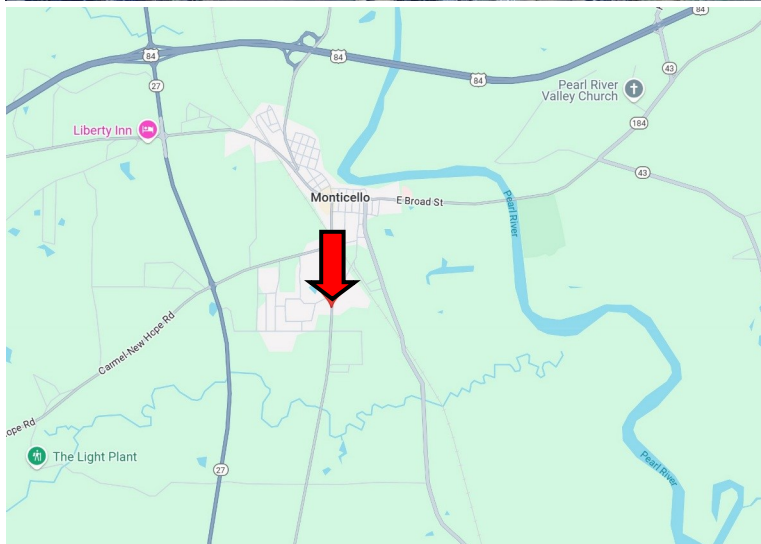
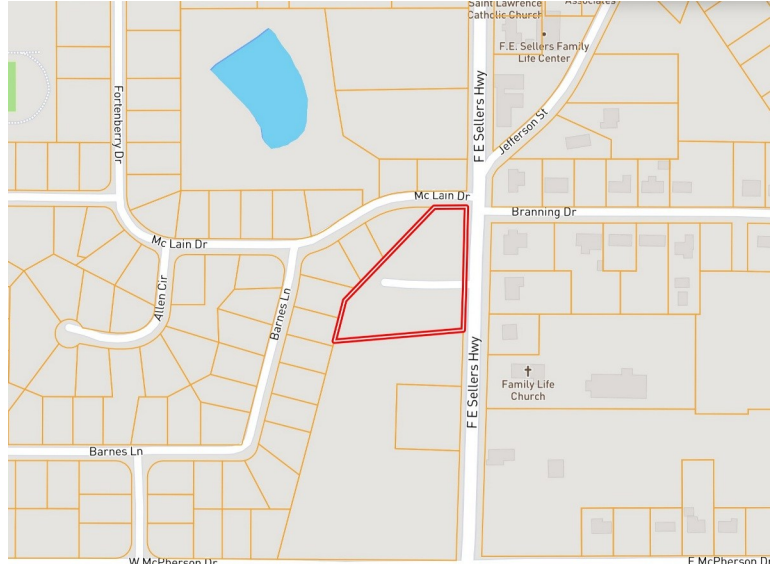
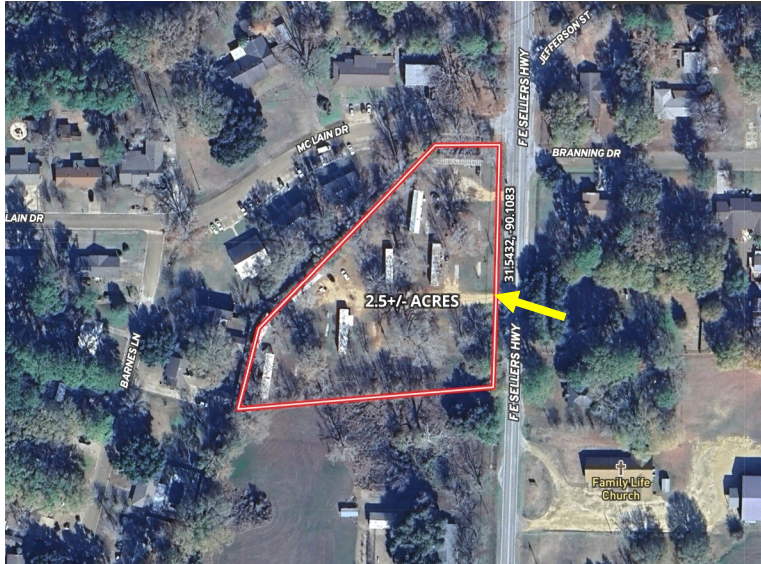
Tom Smith
LAND AND HOMES

Expect More. Get More.

2011-2024
BEST
BROKERAGES

Information is believed to be accurate but not guaranteed.

MAPS [Click Here for the Land id Interactive Map Link](#)



DIRECTIONS FROM HWY 84 AND OLD HWY 27 IN MONTICELLO, MS: Take the exit for Downtown/ Monticello. Turn onto MS-27 and travel 0.6 miles. Turn left onto MS-184/Broad Street and travel 1.3 miles. Turn right onto Brookhaven St. and then continue onto F E Sellers Hwy. After 0.7 miles, the property will be on your right. 1050 F E Sellers Hwy, Monticello, MS 39654- [GOOGLE MAP LINK](#)



**CHAD
WILSON**
REALTOR®

Office: 601.898.2772
Cell: 601.750.1970
Chad@TomSmithLand.com



Expect More. Get More.

A Real Estate Expert You Can Trust

TomSmithLandandHomes.com

Information is believed to be accurate but not guaranteed.

