

# 8.7 +/- Acre Winston County Homesite



**\$52,500**

This beautiful 8.7± acre tract offers the perfect setting for your future homesite in Winston County. With water, power, and gas already running to the property, it's ready for building without the hassle of major infrastructure work. Enjoy the quiet of the country while still being conveniently located from Highway 15 and Highway 25. Whether you're looking to build now or invest for the future, this spacious lot provides room to grow and the freedom to create the lifestyle you want.



**DOYES  
HOLLAND**  
REALTOR®

Office: 662.268.6333

Cell: 662.312.2165

DHolland@TomSmithLand.com



Expect More. Get More.

**A Real Estate Expert You Can Trust**

TomSmithLandandHomes.com

Information is believed to be accurate but not guaranteed.







**A Real Estate Expert**  
*You Can Trust!*

**DOYES HOLLAND**

REALTOR®

O: 662.268.6333 C: 662.312.2165

DHolland@TomSmithLand.com

TomSmithLandandHomes.com



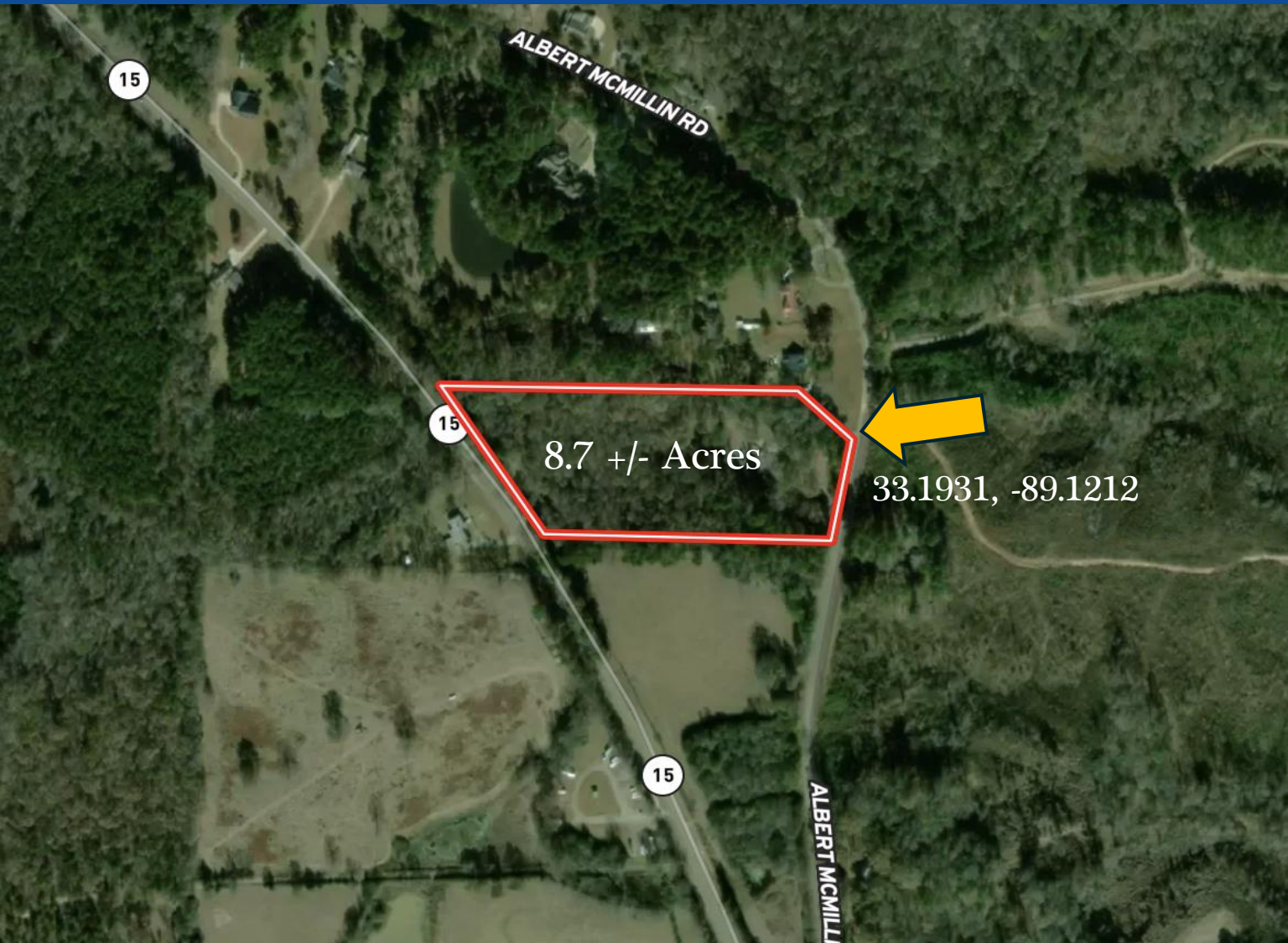
Expect More. Get More.



Information is believed to be accurate but not guaranteed.



# Aerial Map



[Click Here for Interactive Map](#)

**A Real Estate Expert**  
*You Can Trust!*

**DOYES HOLLAND**

REALTOR®

O: 662.268.6333 C: 662.312.2165

DHolland@TomSmithLand.com

TomSmithLandandHomes.com

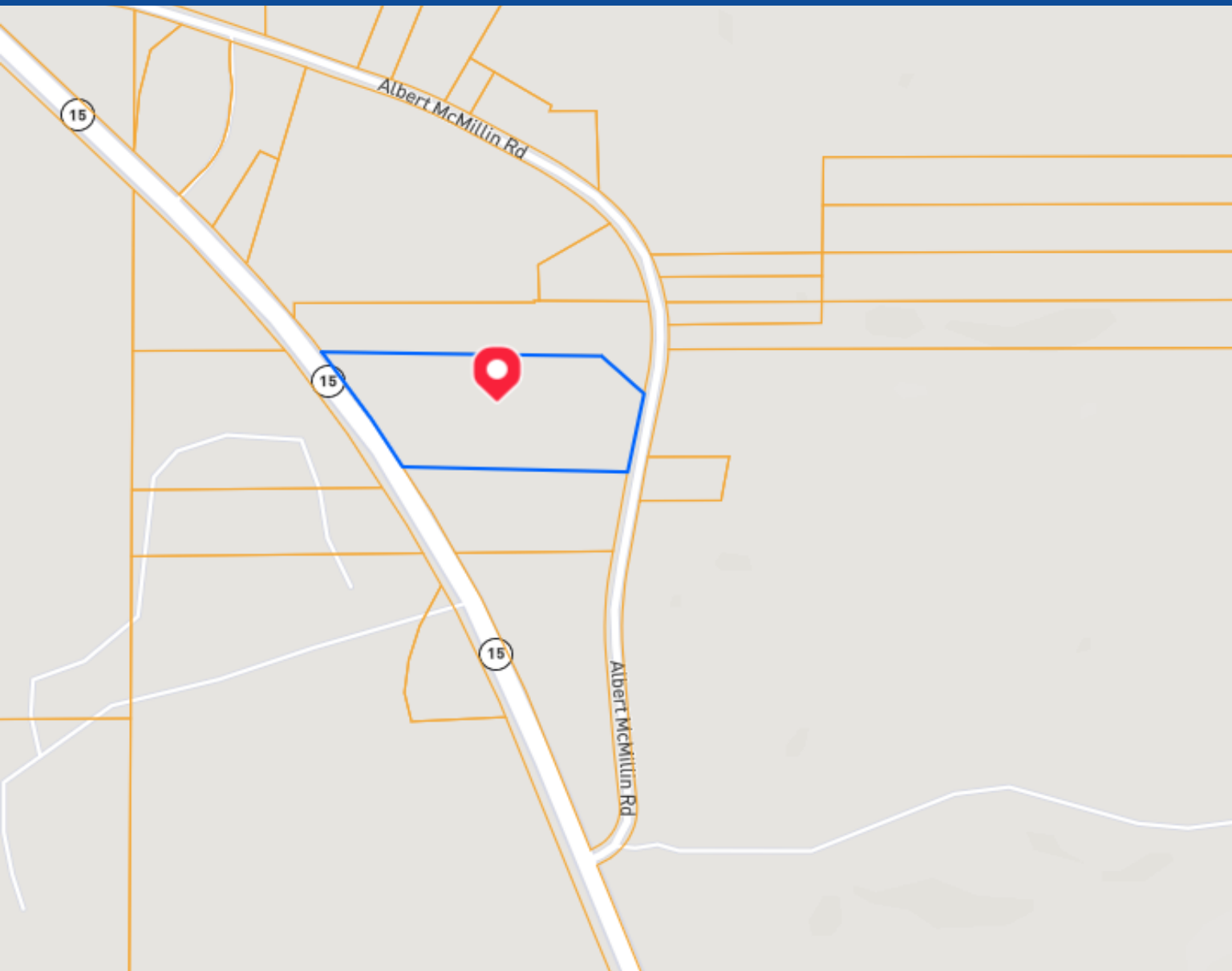


Expect More. Get More.



Information is believed to be accurate but not guaranteed.

# Ownership Map



**A Real Estate Expert**  
*You Can Trust!*

**DOYES HOLLAND**

REALTOR®

O: 662.268.6333 C: 662.312.2165

DHolland@TomSmithLand.com

TomSmithLandandHomes.com



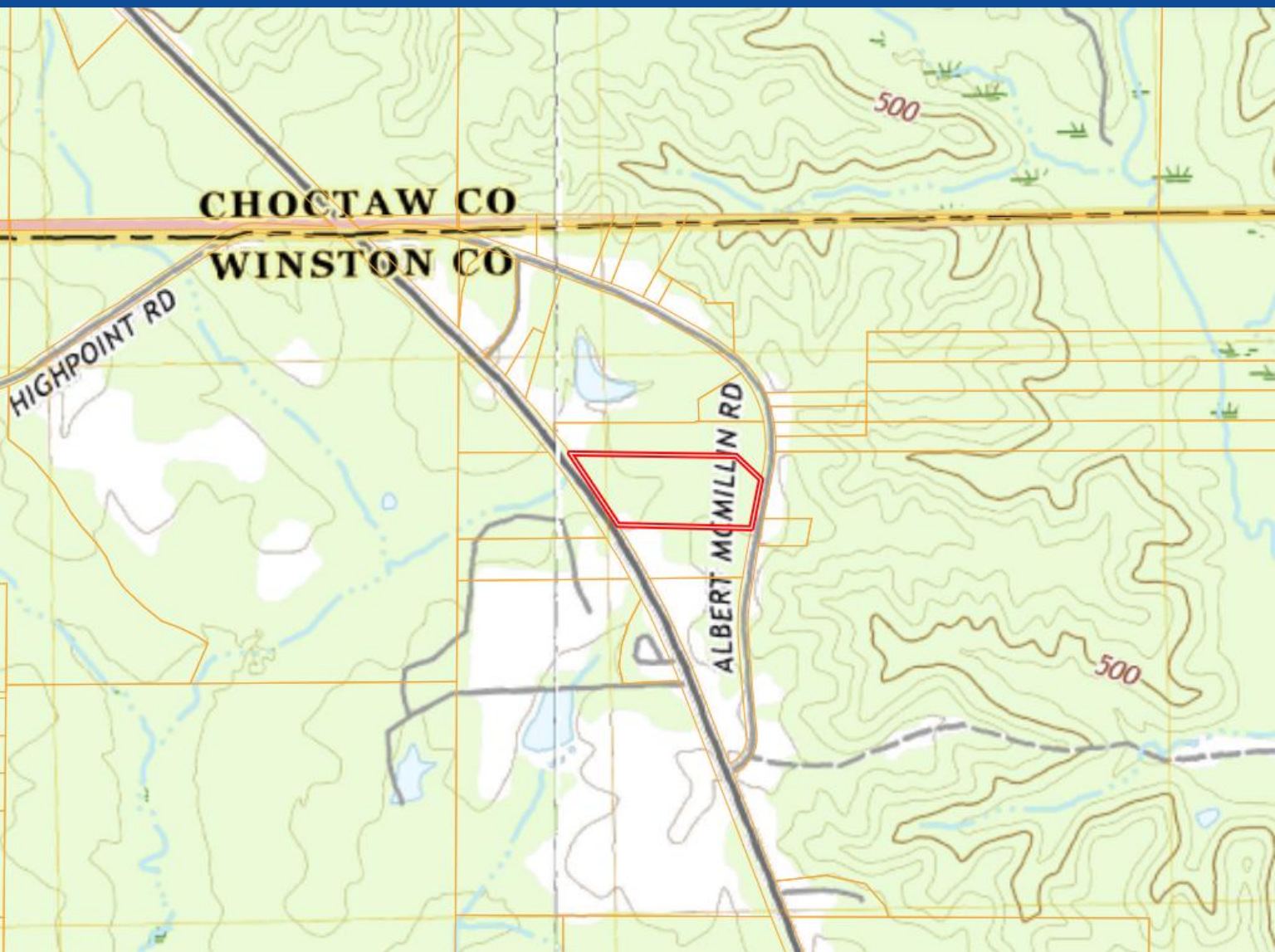
Expect More. Get More.



Information is believed to be accurate but not guaranteed.



# Topography Map



**A Real Estate Expert**  
*You Can Trust!*

**DOYES HOLLAND**

REALTOR®

O: 662.268.6333 C: 662.312.2165

DHolland@TomSmithLand.com

TomSmithLandandHomes.com

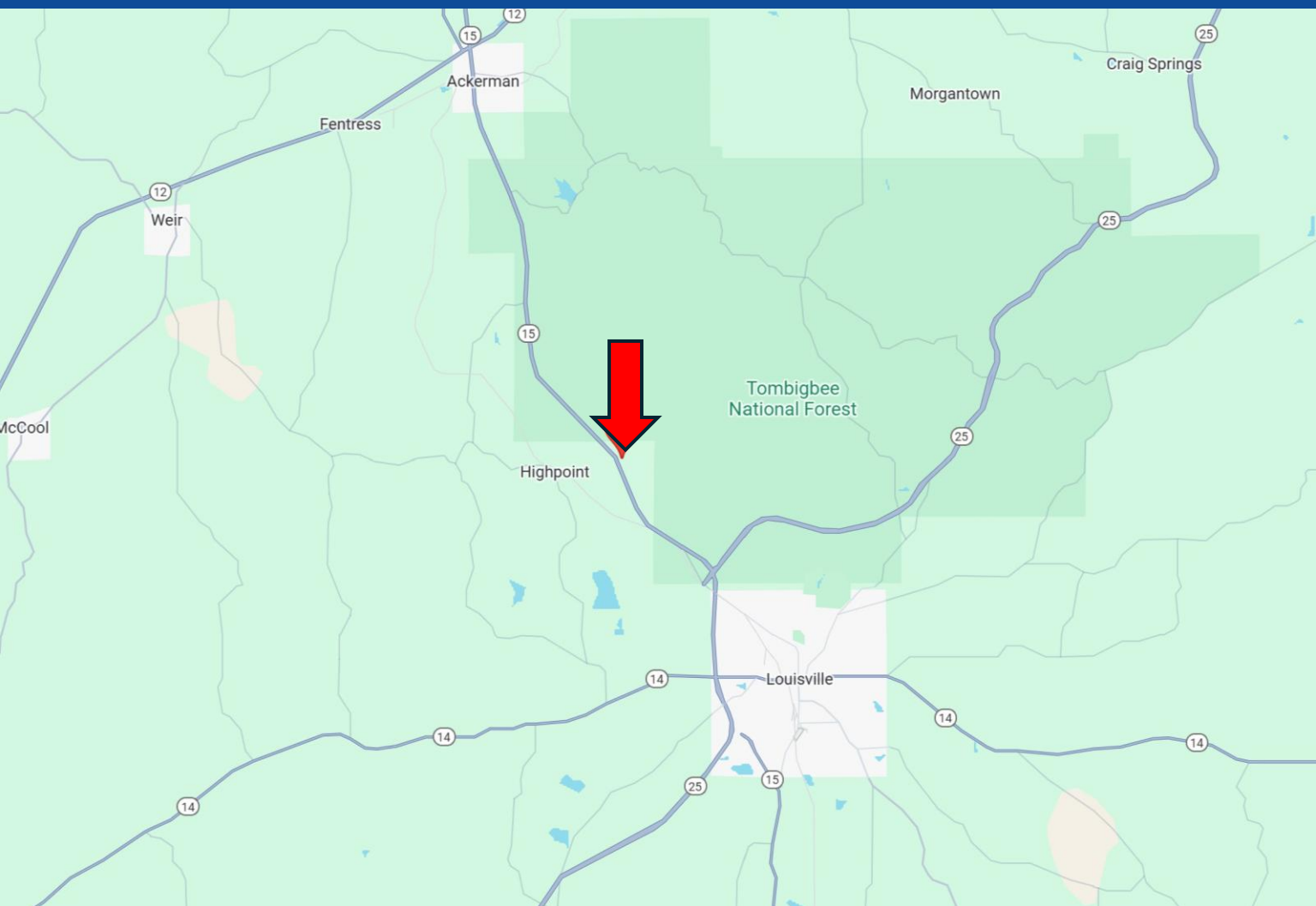


Expect More. Get More.

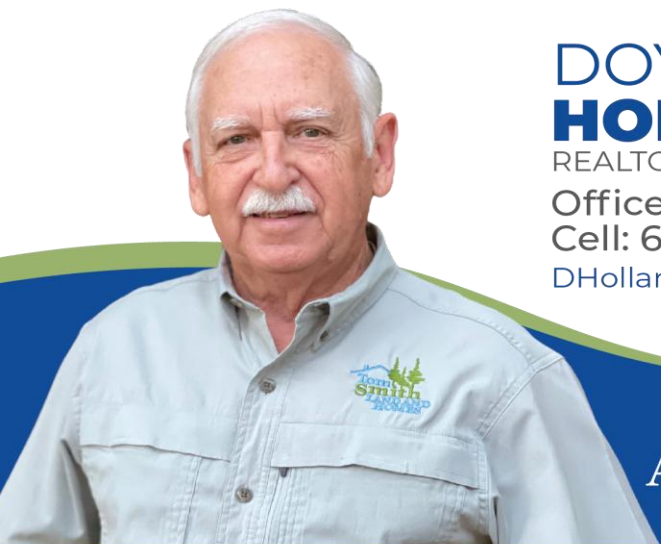


Information is believed to be accurate but not guaranteed.

# Directional Map



Directions from the Intersection of Hwy 14 and Highway 25 in Louisville, MS: Travel north on Hwy 15/Hwy 25 for 5.8 miles. Turn right onto Albert McMillin Road. After 0.2 miles, the property will be on your left. [Google Map Link](#)



**DOYES**  
**HOLLAND**  
REALTOR®

Office: 662.268.6333  
Cell: 662.312.2165  
DHolland@TomSmithLand.com



Expect More. Get More.

**A Real Estate Expert You Can Trust**

TomSmithLandandHomes.com

Information is believed to be accurate but not guaranteed.

