

# Home in Winston County

## 9450 Highway 490 Louisville, MS

### \$130,000



**Located within walking distance of Nanih Waiya High School, this 3-bedroom, 1-bath home is full of potential and waiting for the right buyer to bring it back to life. Whether you're looking for a starter home, rental investment, or renovation project, this property offers a great opportunity in a convenient location. With solid bones and a spacious yard, it's the perfect blank canvas to make your vision a reality. Give Leland a call today!**



**LELAND  
SELBY**  
REALTOR®

Office: 662.268.6333  
Cell: 662.394.9876  
Leland@TomSmithLand.com



**A Real Estate Expert You Can Trust**  
TomSmithLandandHomes.com

Information is believed to be accurate but not guaranteed.







*A Real Estate Expert  
You Can Trust!*

**LELAND SELBY**

REALTOR®

O: 662.268.6333 C: 662.394.9876

Leland@TomSmithLand.com

TomSmithLandandHomes.com

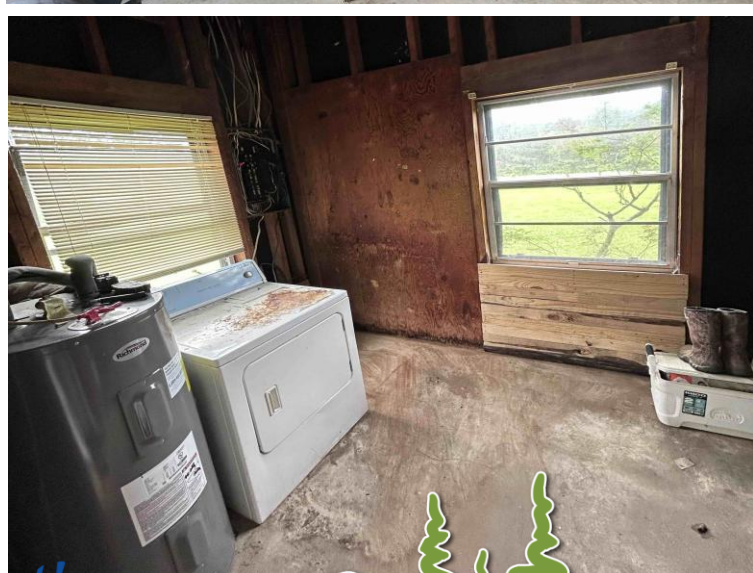
**Tom  
Smith  
LAND AND  
HOMES**

Expect More. Get More.

2011-2024  
BEST  
BROKERAGES

Information is believed to be accurate but not guaranteed.





**A Real Estate Expert  
You Can Trust!**

**LELAND SELBY**  
REALTOR®

O: 662.268.6333 C: 662.394.9876

Leland@TomSmithLand.com

TomSmithLandandHomes.com

**Tom  
Smith  
LAND AND  
HOMES**

Expect More. Get More.

2011-2025  
BEST  
BROKERAGES

Information is believed to be accurate but not guaranteed.



# Aerial Map



[Click Here for Interactive Map](#)

**A Real Estate Expert**  
*You Can Trust!*

**LELAND SELBY**  
REALTOR®

O: 662.268.6333 C: 662.394.9876

Leland@TomSmithLand.com

TomSmithLandandHomes.com

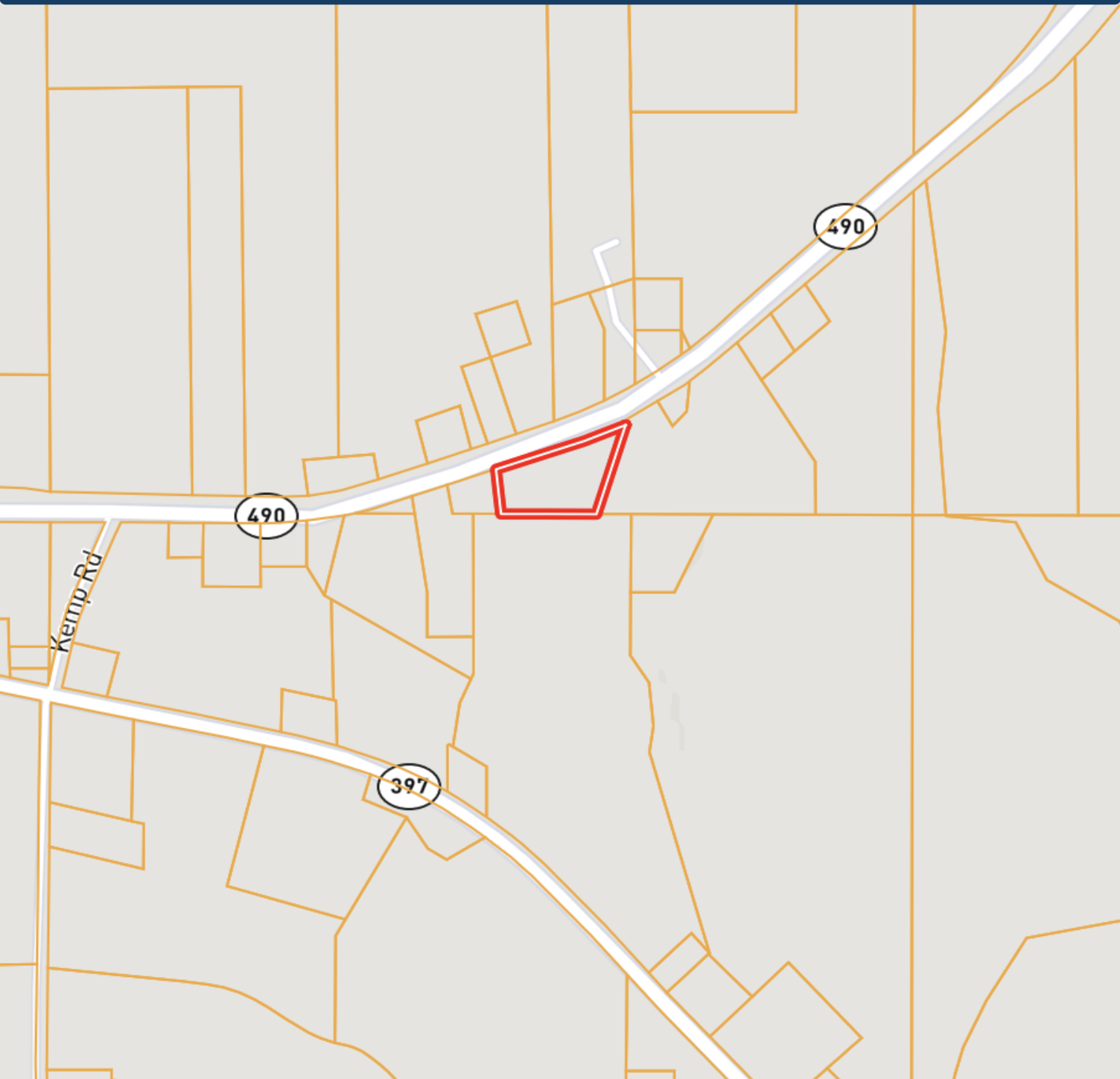


Expect More. Get More.

Information is believed to be accurate but not guaranteed.

2011-2025  
BEST  
BROKERAGES

# Ownership Map



**A Real Estate Expert**  
*You Can Trust!*

**LELAND SELBY**  
REALTOR®

O: 662.268.6333 C: 662.394.9876

Leland@TomSmithLand.com

TomSmithLandandHomes.com

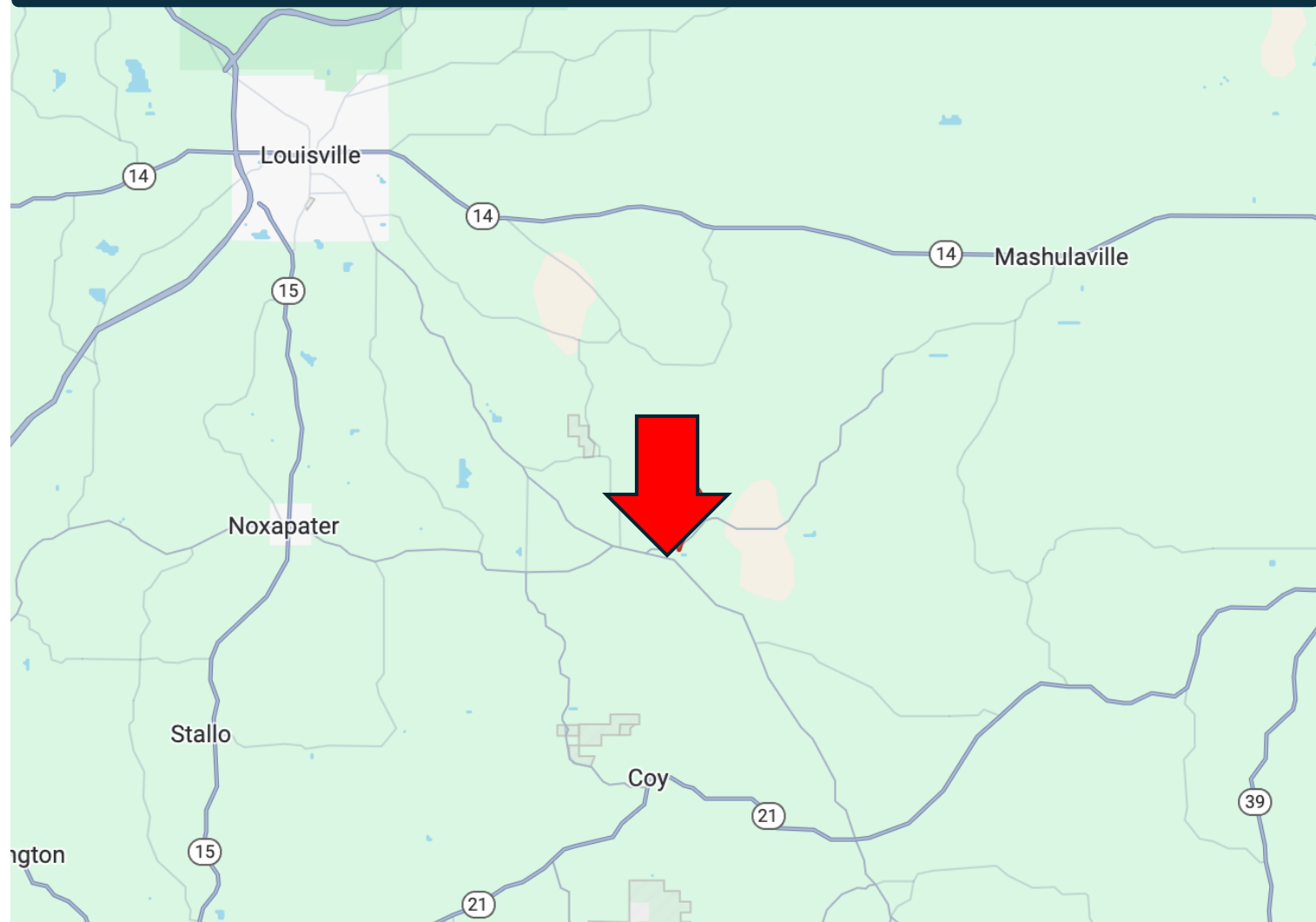


Expect More. Get More.



Information is believed to be accurate but not guaranteed.

# Directional Map



**Directions from Highway 397 in Louisville: Head southeast on MS-397**  
**S/E John C Stennis Dr toward Twin Pine Dr, in 12.4 miles**  
**Turn left onto MS-490 E, in .8 miles the destination will be on your right.**  
**Google Map Link**

**9450 HWY 490, Louisville, MS 39339**



**LELAND  
SELBY**

REALTOR®

Office: 662.268.6333

Cell: 662.394.9876

Leland@TomSmithLand.com



Expect More. Get More.

**A Real Estate Expert You Can Trust**

TomSmithLandandHomes.com

Information is believed to be accurate but not guaranteed.

