



# Beautiful Lakefront Home on *Eagle Lake in Warren County, MS*



1216 Eagle Lake Shore Road, Vicksburg, MS 39183 | \$450,000



COLBY  
**WATSON**

REALTOR®

Office: 601.898.2772

Cell: 601.668.8096

Colby@TomSmithLand.com



Expect More. Get More.

A Real Estate Expert You Can Trust

TomSmithLandandHomes.com

Information is believed to be accurate but not guaranteed.







This 3-bedroom, 2.5-bath lake house offers 2,000± sq. ft. of comfortable living space and sits directly on Eagle Lake in Warren County, MS. The spacious 500± sq. ft. front porch offers breathtaking views of the water—perfect for enjoying both sunrises and sunsets. Inside, the open floor plan connects the kitchen and living area, creating a bright and welcoming space filled with natural light. The living room features a gas fireplace and a shiplap accent wall, while the kitchen has granite countertops, stainless steel appliances, a gas stove, and a large pantry for added storage. Laminate hardwood flooring runs throughout the home, with tile in the bathrooms for easy maintenance. The primary suite includes his-and-her closets, dual vanities with granite countertops, a soaking tub, and a walk-in shower. It also has direct access to the front porch—making it easy to step out and enjoy the lake views. Two large additional bedrooms share a Jack-and-Jill bathroom, also with granite countertops. Outside, a small dock lets you relax, swim, or fish just steps from your door. The home is elevated on piers, offering approximately 3,000 sq. ft. of covered space underneath—ideal for parking, boat storage, or entertaining. Also below the home is a mother-in-law suite complete with a bedroom, shower, toilet, closet, and a window A/C unit—perfect for guests or additional living space. Additional features include a gas water heater, a Generac generator for backup power, and a 24x36 wired shop for storage, tools, or hobbies. This is a peaceful and beautiful place with a great view—ready for its new owner!

**A Real Estate Expert**  
*You Can Trust!*

**COLBY WATSON**  
REALTOR®

O: 601.898.2772 C: 601.668.8096

Colby@TomSmithLand.com

TomSmithLandandHomes.com



Expect More. Get More.

Information is believed to be accurate but not guaranteed.







## A Real Estate Expert You Can Trust!

**COLBY WATSON**  
REALTOR®

O: 601.898.2772 C: 601.668.8096

Colby@TomSmithLand.com

TomSmithLandandHomes.com

**Tom  
Smith**  
LAND AND  
HOMES

Expect More. Get More.

2011-2024  
BEST  
BROKERAGES

Information is believed to be accurate but not guaranteed.





**A Real Estate Expert**  
*You Can Trust!*

**COLBY WATSON**  
REALTOR®

O: 601.898.2772 C: 601.668.8096

Colby@TomSmithLand.com

TomSmithLandandHomes.com

**Tom Smith**  
LAND AND  
HOMES

Expect More. Get More.

2011-2024  
BEST  
BROKERAGES

Information is believed to be accurate but not guaranteed.





**A Real Estate Expert**  
*You Can Trust!*

**COLBY WATSON**  
REALTOR®

O: 601.898.2772 C: 601.668.8096

Colby@TomSmithLand.com

TomSmithLandandHomes.com

**Tom Smith**  
**LAND AND HOMES**

Expect More. Get More.

2011-2024  
**BEST**  
BROKERAGES

Information is believed to be accurate but not guaranteed.





**A Real Estate Expert**  
*You Can Trust!*

**COLBY WATSON**  
REALTOR®

O: 601.898.2772 C: 601.668.8096

Colby@TomSmithLand.com

TomSmithLandandHomes.com

**Tom Smith**  
**LAND AND HOMES**

Expect More. Get More.

2011-2024  
**BEST**  
HOUSING AGENTS

Information is believed to be accurate but not guaranteed.





**A Real Estate Expert**  
*You Can Trust!*

**COLBY WATSON**  
REALTOR®

O: 601.898.2772 C: 601.668.8096

Colby@TomSmithLand.com

TomSmithLandandHomes.com

**Tom  
Smith**  
LAND AND  
HOMES

Expect More. Get More.

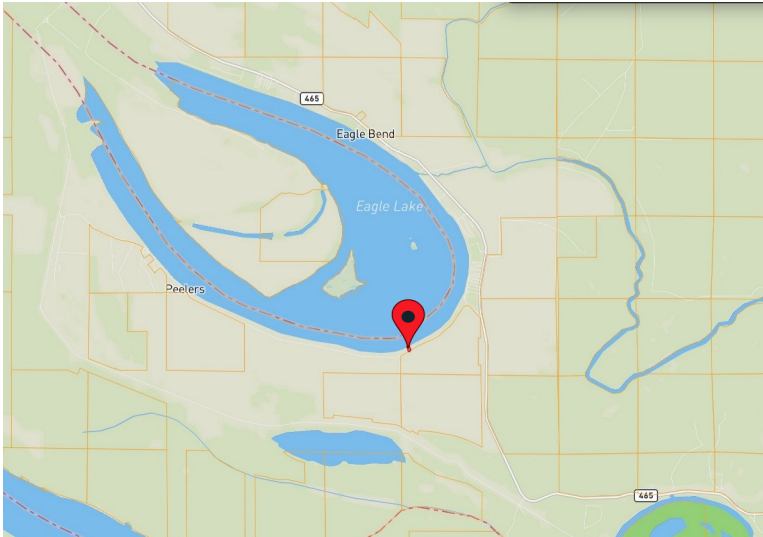
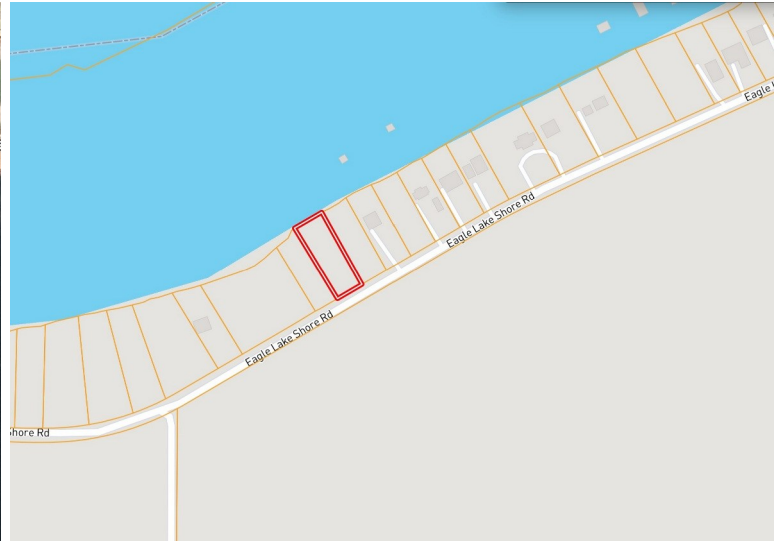
2011-2024  
BEST  
BROKERAGES

Information is believed to be accurate but not guaranteed.



# MAPS |

[CLICK HERE FOR THE INTERACTIVE MAP LINK](#)



Directions from I-20 in Vicksburg, MS: Take exit 5A for Hwy 61 towards Rolling Fork. Travel Hwy 61 N for 9.1 miles. Keep left to continue on Hwy 61 for 1.5 miles. Turn left onto Hwy 465N and travel 13.7 miles. Turn left onto Eagle Lake Shore Road. After 1.2 miles, the property will be on your right.

[1261 Eagle Lake Shore Road, Vicksburg, MS 39183—Click for Google Maps](#)



**COLBY  
WATSON**  
REALTOR®

Office: 601.898.2772  
Cell: 601.668.8096  
[Colby@TomSmithLand.com](mailto:Colby@TomSmithLand.com)



Expect More. Get More.

**A Real Estate Expert You Can Trust**

[TomSmithLandandHomes.com](http://TomSmithLandandHomes.com)

Information is believed to be accurate but not guaranteed.

