



# Beautiful Lakefront Home on *Eagle Lake in Warren County, MS*



1216 Eagle Lake Shore Road, Vicksburg, MS 39183 | \$380,000



COLBY  
**WATSON**

REALTOR®

Office: 601.898.2772

Cell: 601.668.8096

Colby@TomSmithLand.com



Expect More. Get More.

A Real Estate Expert You Can Trust

TomSmithLandandHomes.com

Information is believed to be accurate but not guaranteed.







**This 3-bedroom, 2.5-bath home provides 2,000± square feet of comfortable living space and sits directly on Eagle Lake in Warren County, MS. A large 500± square foot front porch offers beautiful views of the water, perfect for enjoying both sunrises and sunsets. The porch also includes two gas hookups, making it easy to add outdoor heaters or a grill setup for year-round use.**

**Inside, the open floor plan connects the kitchen and living area, creating a bright, welcoming space filled with natural light. The living room has a gas fireplace and a shiplap accent wall, while the kitchen features granite countertops, stainless steel appliances, a gas stove, and a large pantry for added storage. Laminate hardwood flooring runs throughout the home, with tile in the bathrooms for easy maintenance.**

**The primary suite includes separate closets, dual vanities with granite countertops, a soaking tub, and a walk-in shower. It also has direct access to the front porch, making it easy to step out and enjoy the lake views. Two additional large bedrooms share a Jack-and-Jill bathroom, also with granite countertops.**

**Outside, a small dock lets you relax, swim, or fish steps from your door. The home is elevated on piers, offering approximately 3,000 square feet of covered space underneath—perfect for parking, boat storage, or entertaining. There's also one gas hookup located under the house for added flexibility. Additionally, a mother-in-law suite below includes a bedroom, shower, toilet, closet, and a window A/C unit, making it perfect for guests or an extra living space. Other features include a gas water heater, a Generac generator, and a 24x36 wired shop for tools and storage.**

**With a new price, this peaceful lakeside retreat is move-in ready and waiting for its new owner to enjoy the views and make new memories on Eagle Lake. Call Colby to schedule your tour today!**

**A Real Estate Expert**  
*You Can Trust!*

**COLBY WATSON**  
REALTOR®

O: 601.898.2772 C: 601.668.8096

Colby@TomSmithLand.com

TomSmithLandandHomes.com



Information is believed to be accurate but not guaranteed.





**A Real Estate Expert**  
*You Can Trust!*

**COLBY WATSON**  
REALTOR®

O: 601.898.2772 C: 601.668.8096

Colby@TomSmithLand.com

TomSmithLandandHomes.com

**Tom Smith**  
**LAND AND HOMES**

Expect More. Get More.

2011-2025  
AMERICAN  
**BEST**  
BROKERAGES

Information is believed to be accurate but not guaranteed.





**A Real Estate Expert**  
*You Can Trust!*

**COLBY WATSON**  
REALTOR®

O: 601.898.2772 C: 601.668.8096

Colby@TomSmithLand.com

TomSmithLandandHomes.com

**Tom Smith**  
LAND AND  
HOMES

Expect More. Get More.

2011-2025  
AMERICA'S  
**BEST**  
BROKERAGES

Information is believed to be accurate but not guaranteed.





**A Real Estate Expert**  
*You Can Trust!*

**COLBY WATSON**  
REALTOR®

O: 601.898.2772 C: 601.668.8096

Colby@TomSmithLand.com

TomSmithLandandHomes.com

**Tom Smith**  
**LAND AND HOMES**

Expect More. Get More.

1300Report  
**BEST**  
BROKERAGES

Information is believed to be accurate but not guaranteed.





**A Real Estate Expert**  
*You Can Trust!*

**COLBY WATSON**  
REALTOR®

O: 601.898.2772 C: 601.668.8096

Colby@TomSmithLand.com

TomSmithLandandHomes.com

**Tom Smith**  
**LAND AND HOMES**

Expect More. Get More.

2011-2025  
AMERICAN  
**BEST**  
BROKERAGES

Information is believed to be accurate but not guaranteed.





**A Real Estate Expert**  
*You Can Trust!*

**COLBY WATSON**  
REALTOR®

O: 601.898.2772 C: 601.668.8096

Colby@TomSmithLand.com

TomSmithLandandHomes.com

**Tom  
Smith**  
LAND AND  
HOMES

Expect More. Get More.

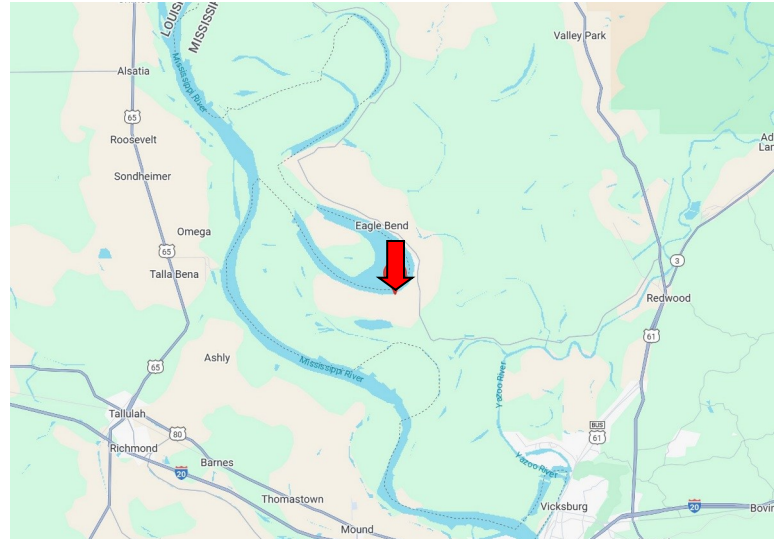
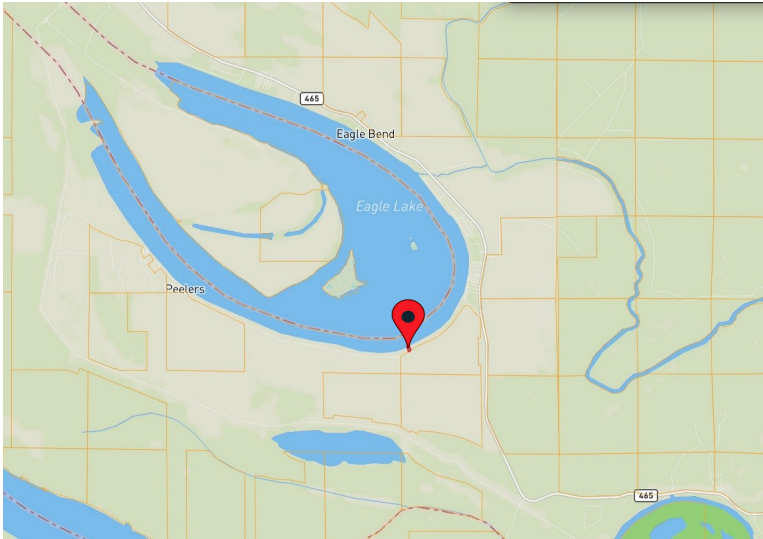
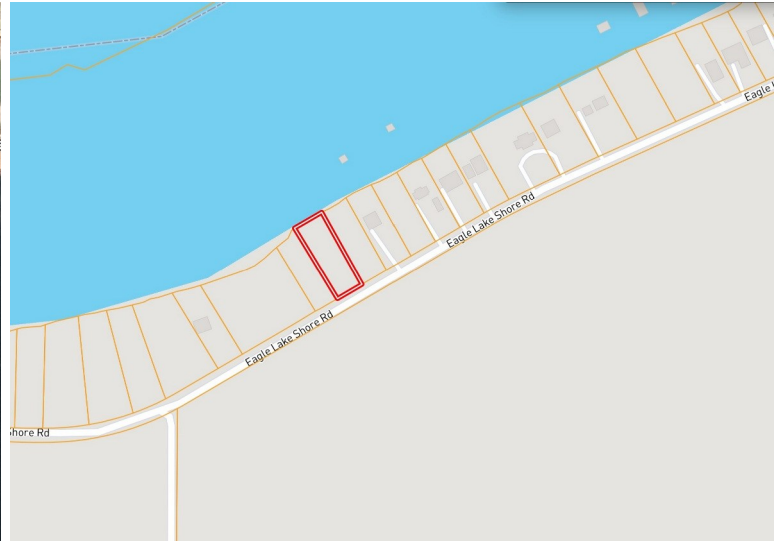
1000Report  
2011-2025  
AMERICAN  
BEST  
BROKERAGES

Information is believed to be accurate but not guaranteed.



# MAPS |

[CLICK HERE FOR THE INTERACTIVE MAP LINK](#)



**Directions from I-20 in Vicksburg, MS:** Take exit 5A for Hwy 61 towards Rolling Fork. Travel Hwy 61 N for 9.1 miles. Keep left to continue on Hwy 61 for 1.5 miles. Turn left onto Hwy 465N and travel 13.7 miles. Turn left onto Eagle Lake Shore Road. After 1.2 miles, the property will be on your right.

[1261 Eagle Lake Shore Road, Vicksburg, MS 39183—Click for Google Map](#)



**COLBY  
WATSON**  
REALTOR®

Office: 601.898.2772  
Cell: 601.668.8096  
Colby@TomSmithLand.com



Expect More. Get More.

**A Real Estate Expert You Can Trust**

[TomSmithLandandHomes.com](http://TomSmithLandandHomes.com)

Information is believed to be accurate but not guaranteed.

