

PASTURE TRACT

21.7± ACRES IN NOXUBEE COUNTY, MS



\$182,900

Have you been looking for land in Noxubee County, MS? This 21.7± acres of rolling pasture in Macon, MS is exactly what you've been searching for. The property offers plenty of potential homesites and is just minutes from everything. Macon is less than 5 minutes away, Starkville is 30 minutes, and Columbus is 35 minutes—with easy access to Highway 45! Approximately 5.9± acres of the property lie within the Macon city limits, giving you access to all city utilities. You also have the option of building in the county on the remaining 15.8± acres located outside the city limits. With over 850 feet of road frontage on Highway 145, there's plenty of room for convenient access to the property. This is the perfect-sized tract for a homestead, mini farm, or simply a peaceful place to escape. Land like this rarely becomes available—and it's ready for its next owner. To schedule a private showing, call or text Walker Trantum today!



**WALKER
TRANUM**
REALTOR®

Office: 662.268.6333

Cell: 662.769.1442

Walker@TomSmithHomes.com



Expect More. Get More.

A Real Estate Expert You Can Trust

TomSmithLandandHomes.com

Information is believed to be accurate but not guaranteed.





**WALKER
TRANUM**
REALTOR®

Office: 662.268.6333

Cell: 662.769.1442

Walker@TomSmithHomes.com



Expect More. Get More.

A Real Estate Expert You Can Trust

TomSmithLandandHomes.com

Information is believed to be accurate but not guaranteed.





**WALKER
TRANUM**
REALTOR®

Office: 662.268.6333

Cell: 662.769.1442

Walker@TomSmithHomes.com



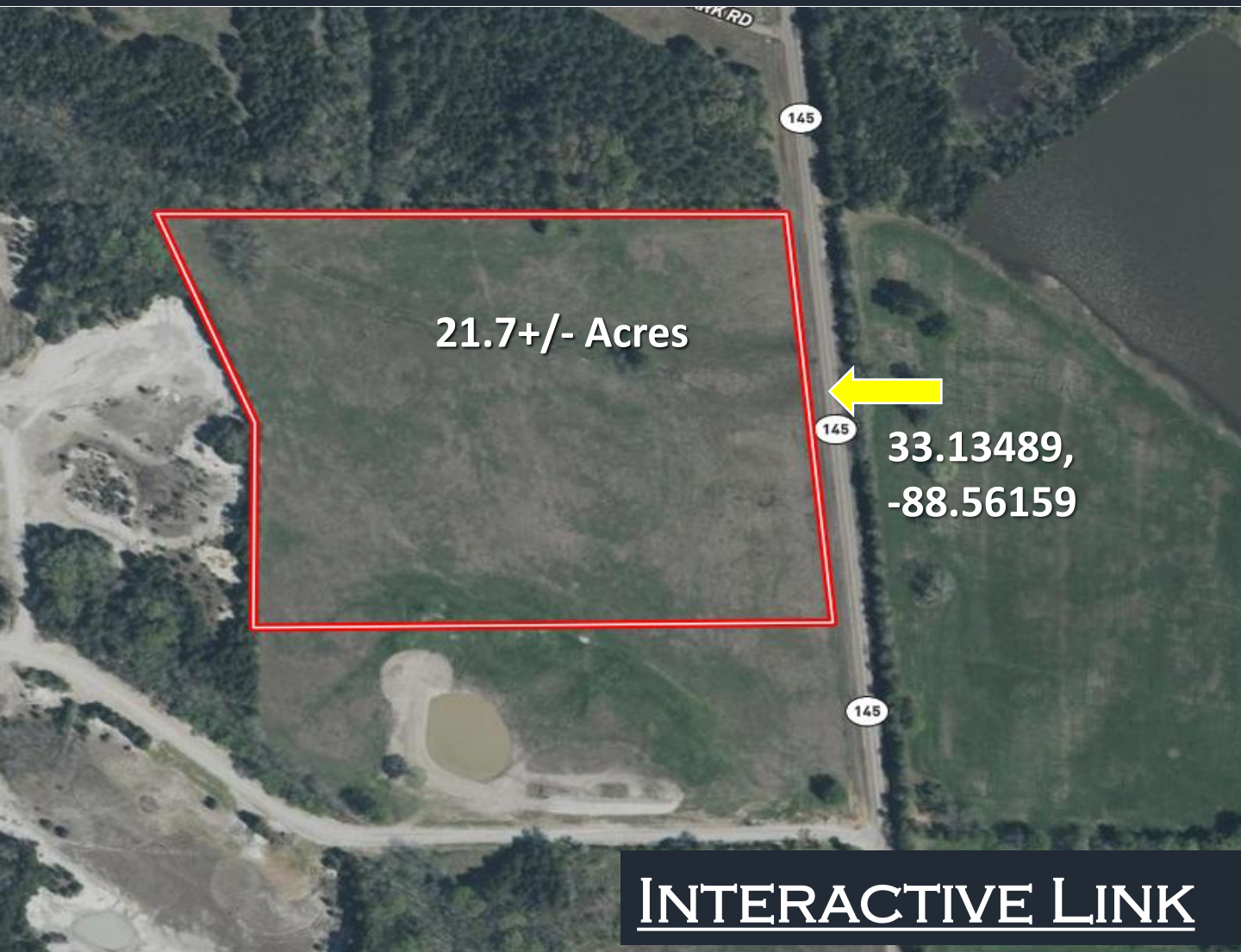
A Real Estate Expert You Can Trust

TomSmithLandandHomes.com

Information is believed to be accurate but not guaranteed.



AERIAL MAP



[INTERACTIVE LINK](#)



**WALKER
TRANUM**
REALTOR®

Office: 662.268.6333

Cell: 662.769.1442

Walker@TomSmithHomes.com



Expect More. Get More.

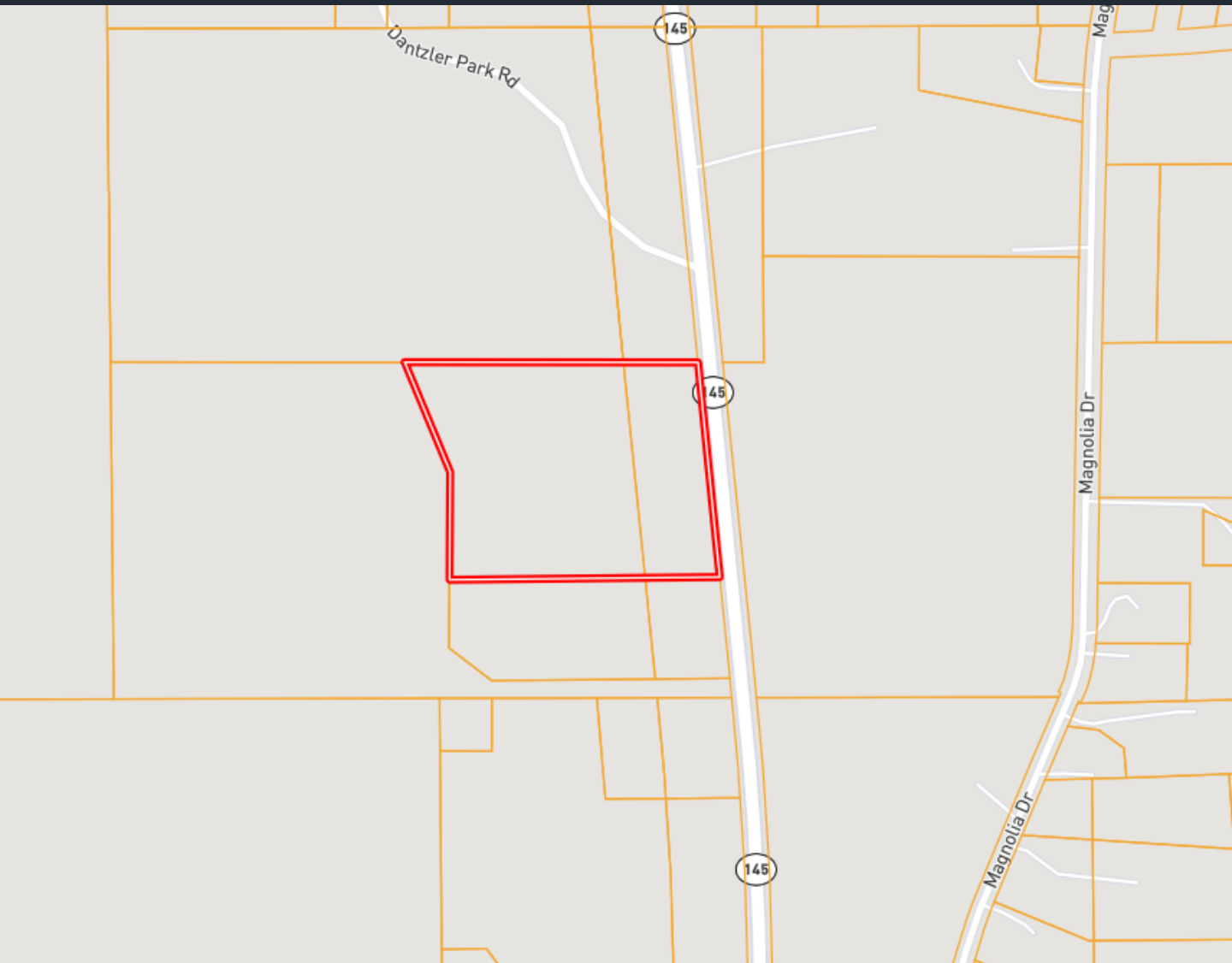
A Real Estate Expert You Can Trust

TomSmithLandandHomes.com

Information is believed to be accurate but not guaranteed.



OWNERSHIP MAP



**WALKER
TRANUM**
REALTOR®

Office: 662.268.6333

Cell: 662.769.1442

Walker@TomSmithHomes.com



Expect More. Get More.

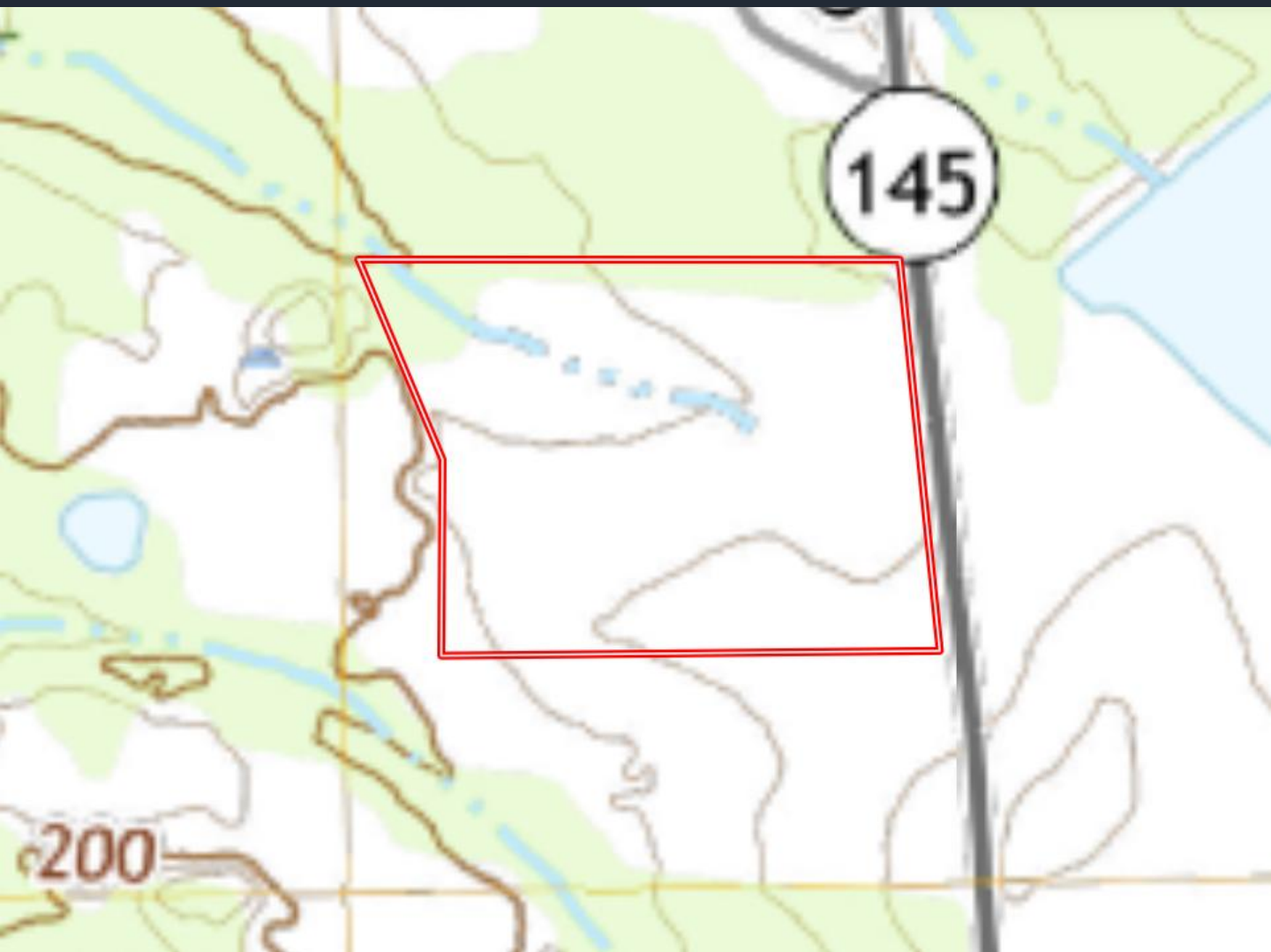
A Real Estate Expert You Can Trust

TomSmithLandandHomes.com

Information is believed to be accurate but not guaranteed.



TOPO MAP



**WALKER
TRANUM**
REALTOR®

Office: 662.268.6333

Cell: 662.769.1442

Walker@TomSmithHomes.com



Expect More. Get More.

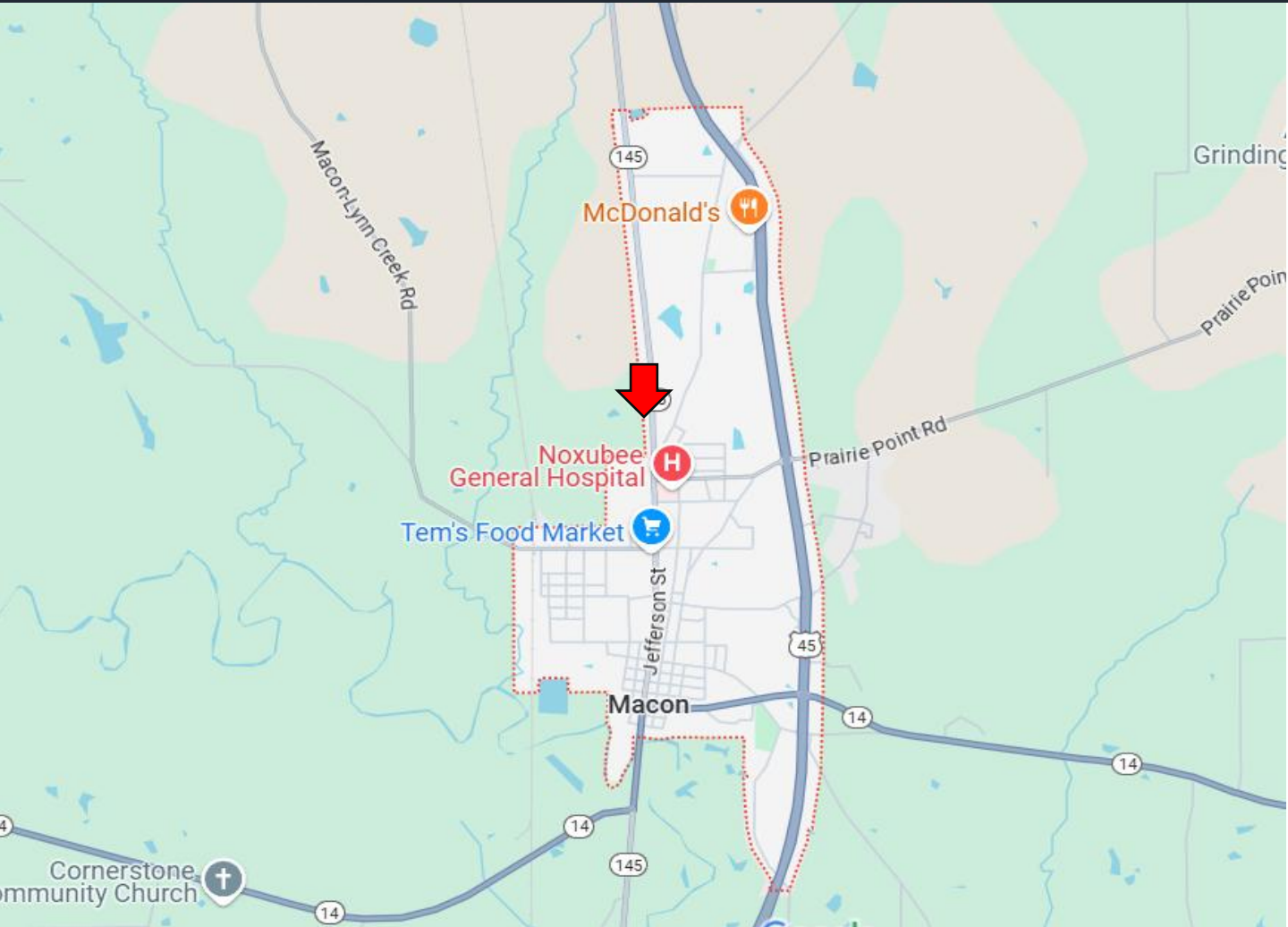
A Real Estate Expert You Can Trust

TomSmithLandandHomes.com

Information is believed to be accurate but not guaranteed.



DIRECTIONAL MAP



Directions from Highway 145, Macon, MS: From Macon, head north on Hwy 145 for 2 miles and the property will be on your left. [GOOGLE MAP LINK](#)



**WALKER
TRANUM**
REALTOR®

Office: 662.268.6333

Cell: 662.769.1442

Walker@TomSmithHomes.com



Expect More. Get More.

A Real Estate Expert You Can Trust

TomSmithLandandHomes.com

Information is believed to be accurate but not guaranteed.

