

# PASTURE TRACT

## 21.7+/- ACRES IN NOXUBEE COUNTY, MS



**\$162,900**

Have you been looking for land in Noxubee County, MS? This 21.7+/- acres of rolling pasture in Macon, MS is what you have been looking for. This property has plenty of homesites and is just minutes from everything. Macon is less than 5 minutes away, Starkville is 30 minutes, Columbus is 35 minutes, and has easy access to Highway 45! 5.9+/- acres of this property is located in the Macon city limits giving access to all city utilities or you have the option of building in the county with the remaining 15.8+/- acres not in the city limits. There is also over 850 feet of road frontage on Hwy 145, giving plenty of room to access the property. This is the perfect size property for a homestead, mini farm, or just a place to get away to. A tract of land like this does not come available often and is ready for its next owner. To schedule a private showing, call or text Walker Trnum today!



**WALKER  
TRANUM**  
REALTOR®

Office: 662.268.6333

Cell: 662.769.1442

Walker@TomSmithHomes.com



Expect More. Get More.

**A Real Estate Expert You Can Trust**

TomSmithLandandHomes.com

Information is believed to be accurate but not guaranteed.







**WALKER  
TRANUM**  
REALTOR®

Office: 662.268.6333

Cell: 662.769.1442

Walker@TomSmithHomes.com



Expect More. Get More.

**A Real Estate Expert You Can Trust**

TomSmithLandandHomes.com

Information is believed to be accurate but not guaranteed.







**WALKER  
TRANUM**  
REALTOR®

Office: 662.268.6333

Cell: 662.769.1442

[Walker@TomSmithHomes.com](mailto:Walker@TomSmithHomes.com)



**A Real Estate Expert You Can Trust**

[TomSmithLandandHomes.com](http://TomSmithLandandHomes.com)

Information is believed to be accurate but not guaranteed.





# AERIAL MAP



**WALKER  
TRANUM**  
REALTOR®

Office: 662.268.6333

Cell: 662.769.1442

Walker@TomSmithHomes.com



Expect More. Get More.

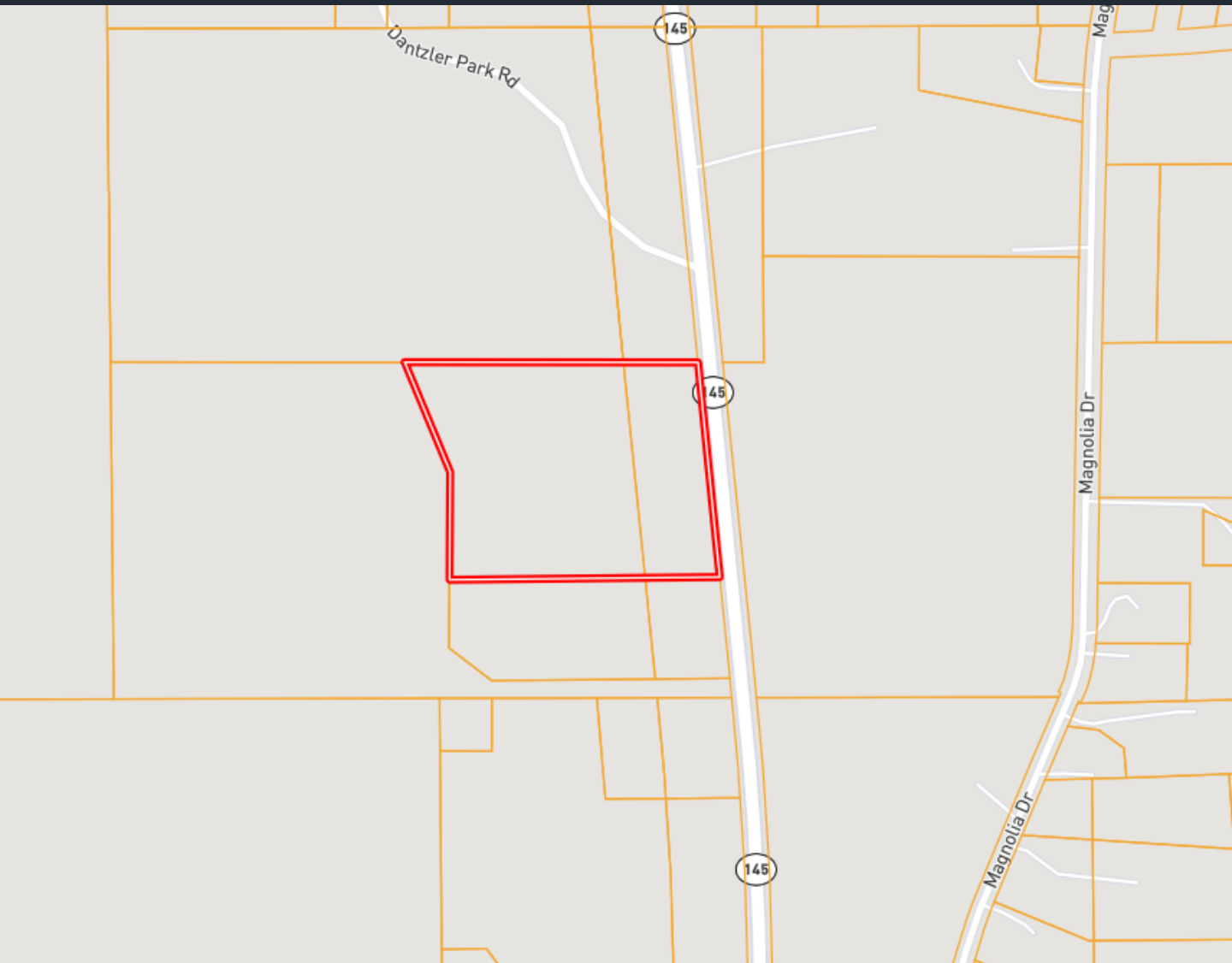
**A Real Estate Expert You Can Trust**

TomSmithLandandHomes.com

Information is believed to be accurate but not guaranteed.



# OWNERSHIP MAP



**WALKER  
TRANUM**  
REALTOR®

Office: 662.268.6333

Cell: 662.769.1442

Walker@TomSmithHomes.com



Expect More. Get More.

**A Real Estate Expert You Can Trust**

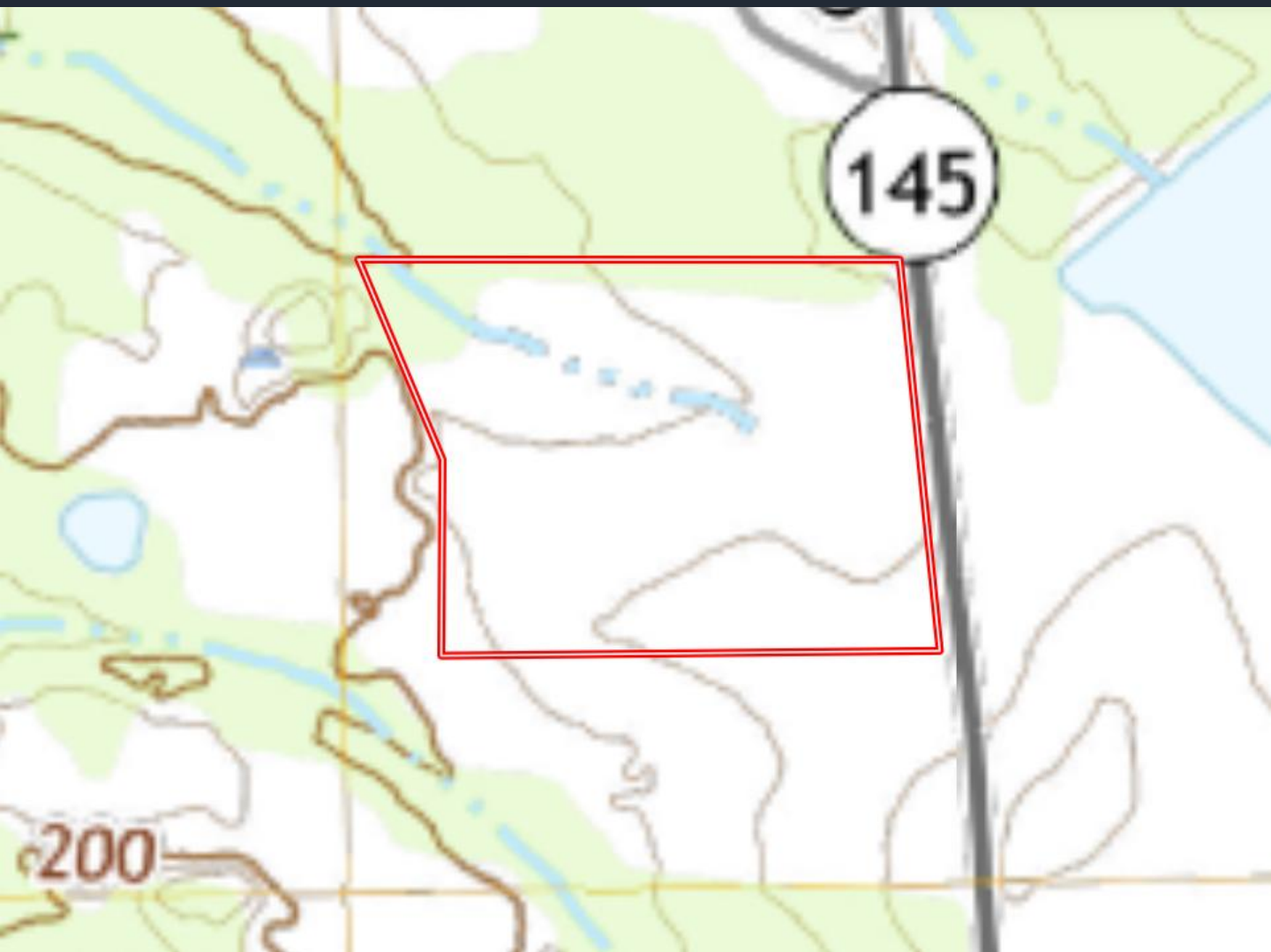
TomSmithLandandHomes.com

Information is believed to be accurate but not guaranteed.





# TOPO MAP



**WALKER  
TRANUM**

REALTOR®

Office: 662.268.6333

Cell: 662.769.1442

Walker@TomSmithHomes.com



Expect More. Get More.

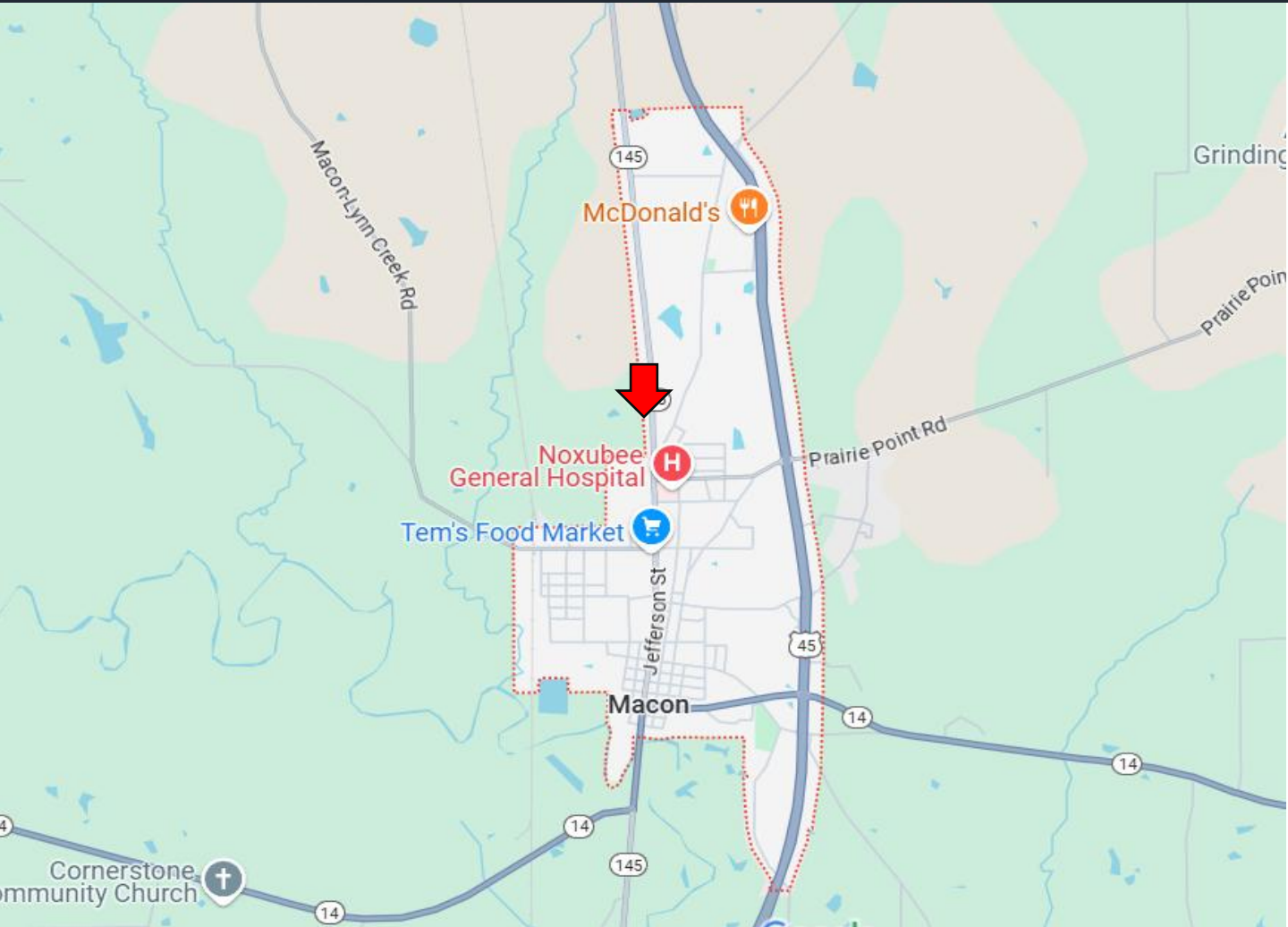
**A Real Estate Expert You Can Trust**

TomSmithLandandHomes.com

Information is believed to be accurate but not guaranteed.



# DIRECTIONAL MAP



**Directions from Highway 145, Macon, MS:** From Macon, head north on Hwy 145 for 2 miles and the property will be on your left. [GOOGLE MAP LINK](#)



**WALKER  
TRANUM**  
REALTOR®

Office: 662.268.6333

Cell: 662.769.1442

Walker@TomSmithHomes.com



Expect More. Get More.

**A Real Estate Expert You Can Trust**

TomSmithLandandHomes.com

Information is believed to be accurate but not guaranteed.

