

# Beautiful Bolivar County Home

## 38 3RD STREET, CLEVELAND, MS 38732



**\$320,000**

Located in the heart of Cleveland, Bolivar County, this spacious brick home offers 2,800 square feet of well-designed living space. The interior features three generously sized bedrooms, two and a half bathrooms, beautiful hardwood floors, and a cozy gas fireplace that adds warmth and charm. A central HVAC system, excellent insulation, and an endless hot water system ensure comfort and efficiency throughout the year.

The home sits on a 1.77± acre lot and includes a two-car garage, a large open backyard, and a back porch—perfect for outdoor entertaining or relaxing. Its central location provides convenient access to local amenities, schools, and shopping. Call or text Emerson today to schedule your private tour of this exceptional property!



**EMERSON  
LOVELACE**

REALTOR®

Office: 662.441.2500

Cell: 601.715.3302

Emerson@TomSmithLand.com



Expect More. Get More.

**A Real Estate Expert You Can Trust**

TomSmithLandandHomes.com

Information is believed to be accurate but not guaranteed.







## EMERSON LOVELACE

REALTOR®

Office: 662.441.2500

Cell: 601.715.3302

Emerson@TomSmithLand.com



Expect More. Get More.

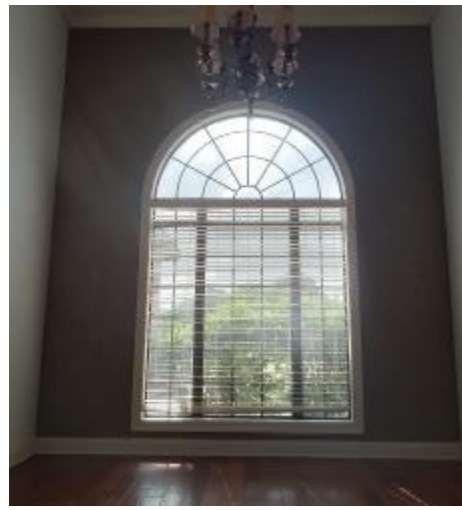
### A Real Estate Expert You Can Trust

TomSmithLandandHomes.com

Information is believed to be accurate but not guaranteed.







**EMERSON  
LOVELACE**

REALTOR®

Office: 662.441.2500

Cell: 601.715.3302

Emerson@TomSmithLand.com



Expect More. Get More.

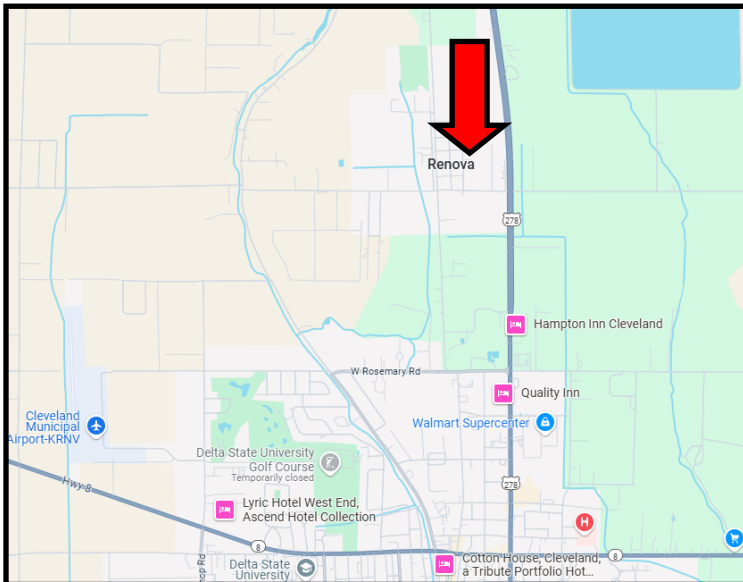
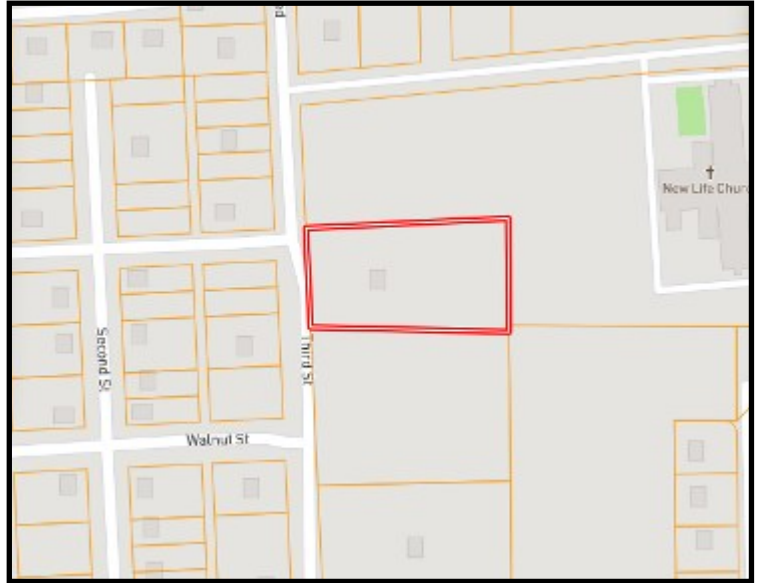
**A Real Estate Expert You Can Trust**

TomSmithLandandHomes.com

Information is believed to be accurate but not guaranteed.



# MAPS



Directions from the intersection of HWY 8 and US-278 in Cleveland, MS: Head North on US-278 toward E Sunflower Rd for 2.0 miles. Turn left onto McKnight Rd, follow for 0.3 miles. Turn right onto 3rd Street, in 0.3 miles your destination will be on the right.

[Google Maps Link](#)

[Click Here for LandID  
Interactive Map](#)

id.



**EMERSON  
LOVELACE**  
REALTOR®

Office: 662.441.2500

Cell: 601.715.3302

Emerson@TomSmithLand.com



Expect More. Get More.

**A Real Estate Expert You Can Trust**

TomSmithLandandHomes.com

Information is believed to be accurate but not guaranteed.

