

2-Bed, 1-Bath Home in Cleveland, MS  
504 Yale Street | \$85,500



Welcome to a great starter home at **504 Yale Street** in Cleveland, Bolivar County, MS! This 912± SF home features two bedrooms and one bathroom. The home was built in 1960 on a 0.29± acre lot. The property also features a one-car carport with a paved driveway. To schedule your private showing, call Tracey Bell today!



**TRACEY  
BELL**

MANAGING BROKER

Office: 662.441.2500

Cell: 662.719.4720

Tracey@TomSmithLand.com



Expect More. Get More.

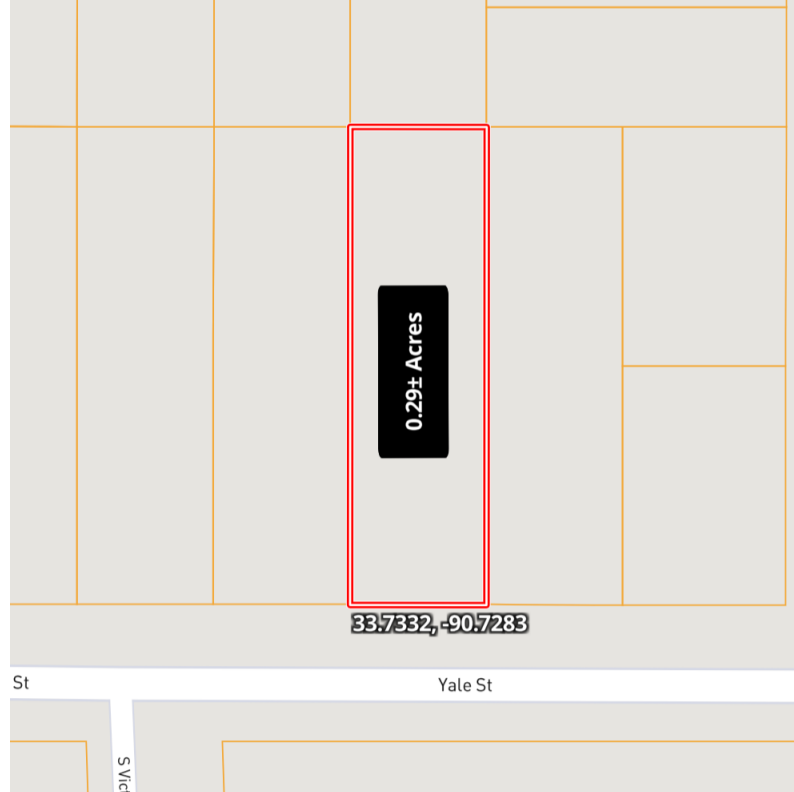
**A Real Estate Expert You Can Trust**

TomSmithLandandHomes.com

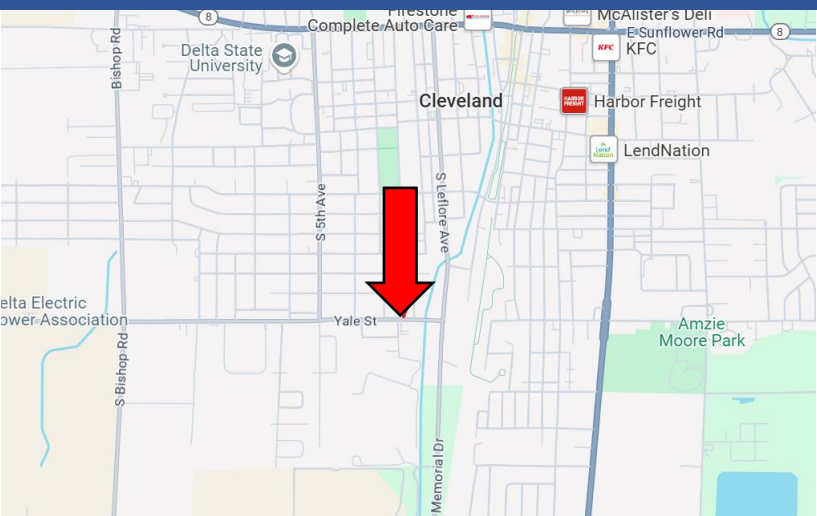
Information is believed to be accurate but not guaranteed.







# MAPS | [Click for Interactive Map](#)



**Address:** 504 Yale St., Cleveland, MS 38732

## Directions from Hwy 8 & Hwy 61 in Cleveland:

Travel south on Hwy 61 for 0.6 miles, the turn right onto Lee Street. After 0.6 miles, turn left onto S. Leflore Avenue. Turn right Yale Street, and the home will be on the right in 0.1 miles.

[Click for Google Maps](#)



**TRACEY  
BELL**

MANAGING BROKER

Office: 662.441.2500

Cell: 662.719.4720

Tracey@TomSmithLand.com



Expect More. Get More.

## A Real Estate Expert You Can Trust

[TomSmithLandandHomes.com](http://TomSmithLandandHomes.com)

Information is believed to be accurate but not guaranteed.

