

Cute Cottage in Cleveland, MS
800 Deering Street, Cleveland, MS | \$89,550



This adorable 1,101± SF cottage is situated on a 0.24± acre corner lot in Cleveland, Bolivar County, MS. It has three bedrooms and one-and-a-half bathrooms. If you are looking for the perfect starter home, look no further! This home has excellent curb appeal and charm!

Don't miss out—Contact Tracey Bell today to schedule your private showing and learn more about this property!



**TRACEY
BELL**

MANAGING BROKER

Office: 662.441.2500

Cell: 662.719.4720

Tracey@TomSmithLand.com



Expect More. Get More.

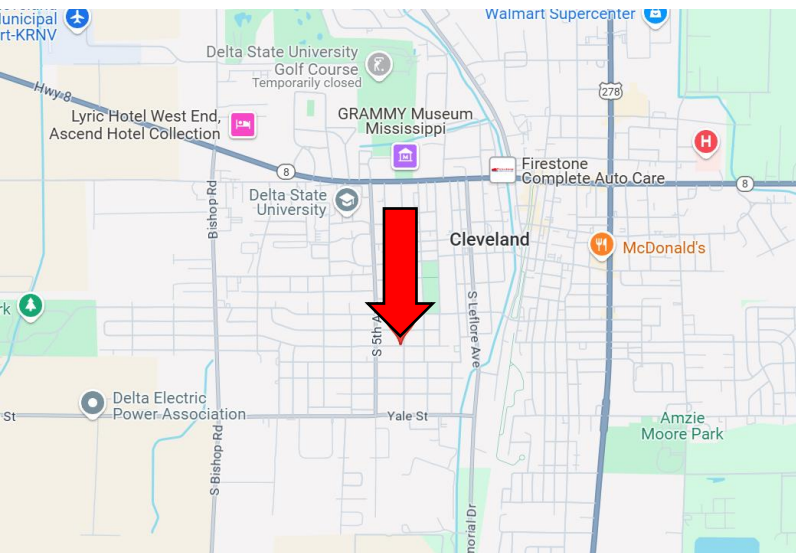
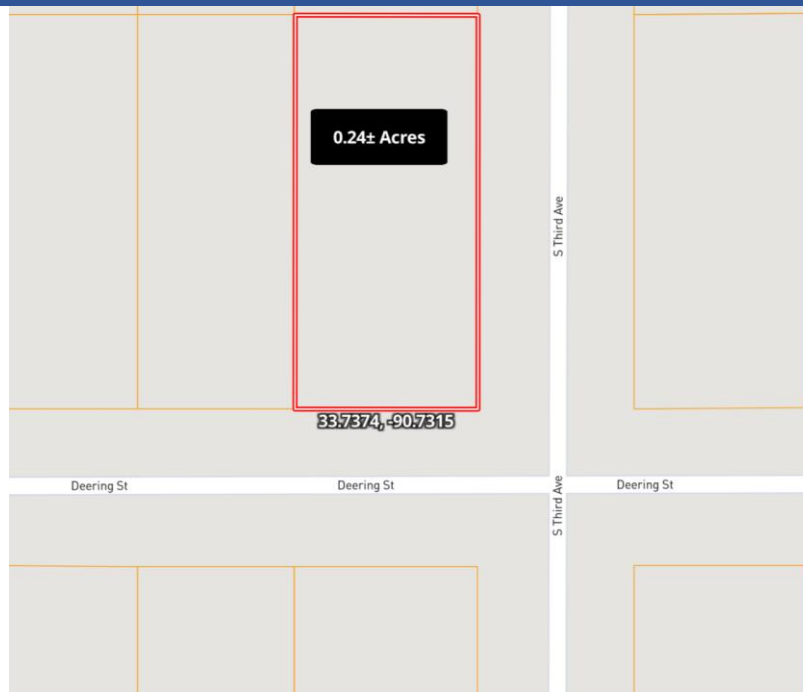
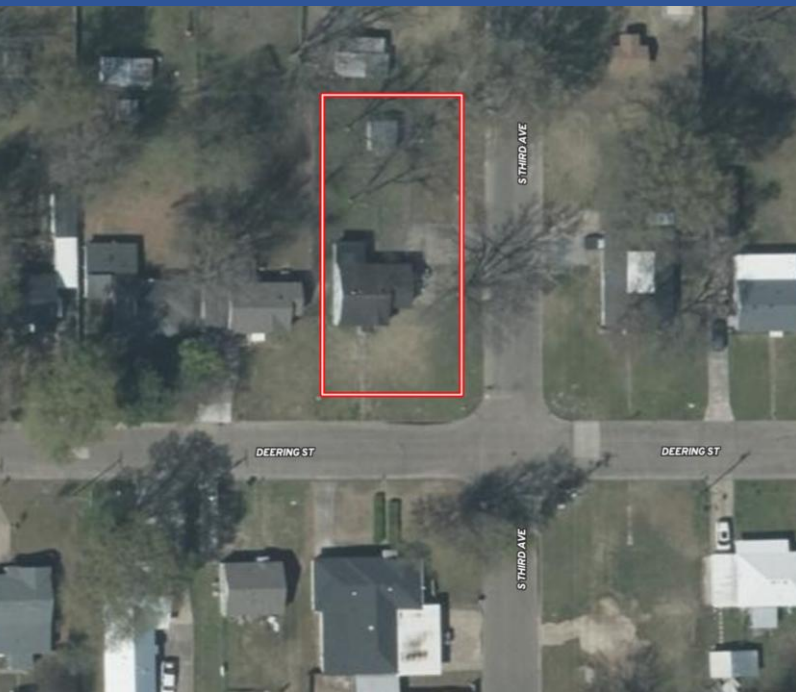
A Real Estate Expert You Can Trust

TomSmithLandandHomes.com

Information is believed to be accurate but not guaranteed.



MAPS | [Click for Interactive Map](#)



Address: 800 Deering St., Cleveland, MS 38732

Directions from Hwy 8 & Hwy 61 in Cleveland:

Travel west on Hwy 8 for 0.7 miles, then turn left on N. Victoria Avenue. After 0.6 miles, turn left onto College Street. Turn left onto S. Third Avenue, and the home will be on your left in 0.1 miles.

[Click for Google Maps](#)



**TRACEY
BELL**

MANAGING BROKER

Office: 662.441.2500

Cell: 662.719.4720

Tracey@TomSmithLand.com



Expect More. Get More.

A Real Estate Expert You Can Trust

TomSmithLandandHomes.com

Information is believed to be accurate but not guaranteed.

