

# Versatile Commercial Building

## Noxubee County, MS

526 8th Street, Macon, MS 39341



**\$135,000**

This well-maintained commercial building in Macon, MS is ready for its next owner. Measuring 28x40 feet, the space has served a variety of business purposes over the years and offers great versatility. The building features a spacious walk-in garage, built-in upper storage, multiple office areas, three bathrooms, and a dedicated parking lot. Conveniently located just off Main Street, it's only minutes from downtown and other key areas of Macon. Positioned on a corner lot with easy access to Highway 145 and US-45, this property offers excellent visibility and accessibility—making it an ideal spot for your next venture. Contact Walker or Tyler today to schedule your private showing!



**WALKER TRANUM**  
MANAGING BROKER

O: 662.268.6333 | C: 662.769.1442  
Walker@TomSmithHomes.com



**TYLER KILGORE**  
REALTOR®

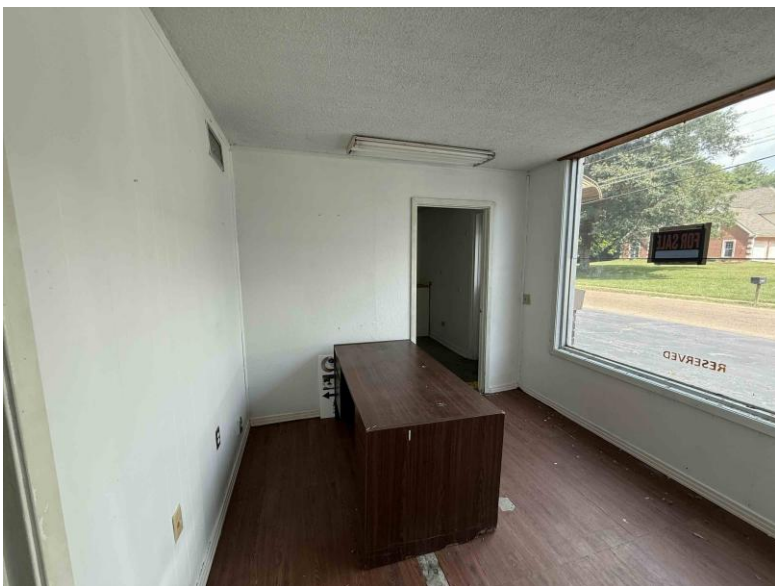
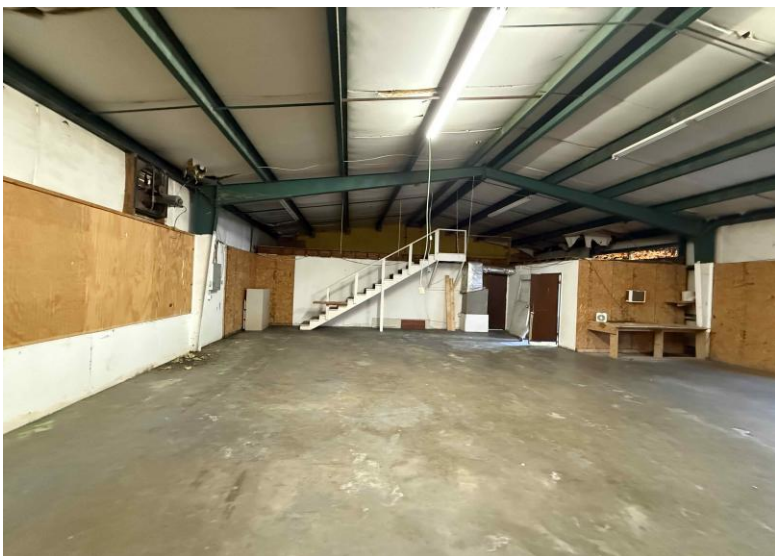
O: 662.268.6333 | C: 601.562.0688  
Tyler@TomSmithLand.com

**TomSmithLandandHomes.com**

Information is believed to be accurate but not guaranteed.







**WALKER TRANUM**  
MANAGING BROKER  
O: 662.268.6333 | C: 662.769.1442  
Walker@TomSmithHomes.com

**TYLER KILGORE**  
REALTOR®  
O: 662.268.6333 | C: 601.562.0688  
Tyler@TomSmithLand.com

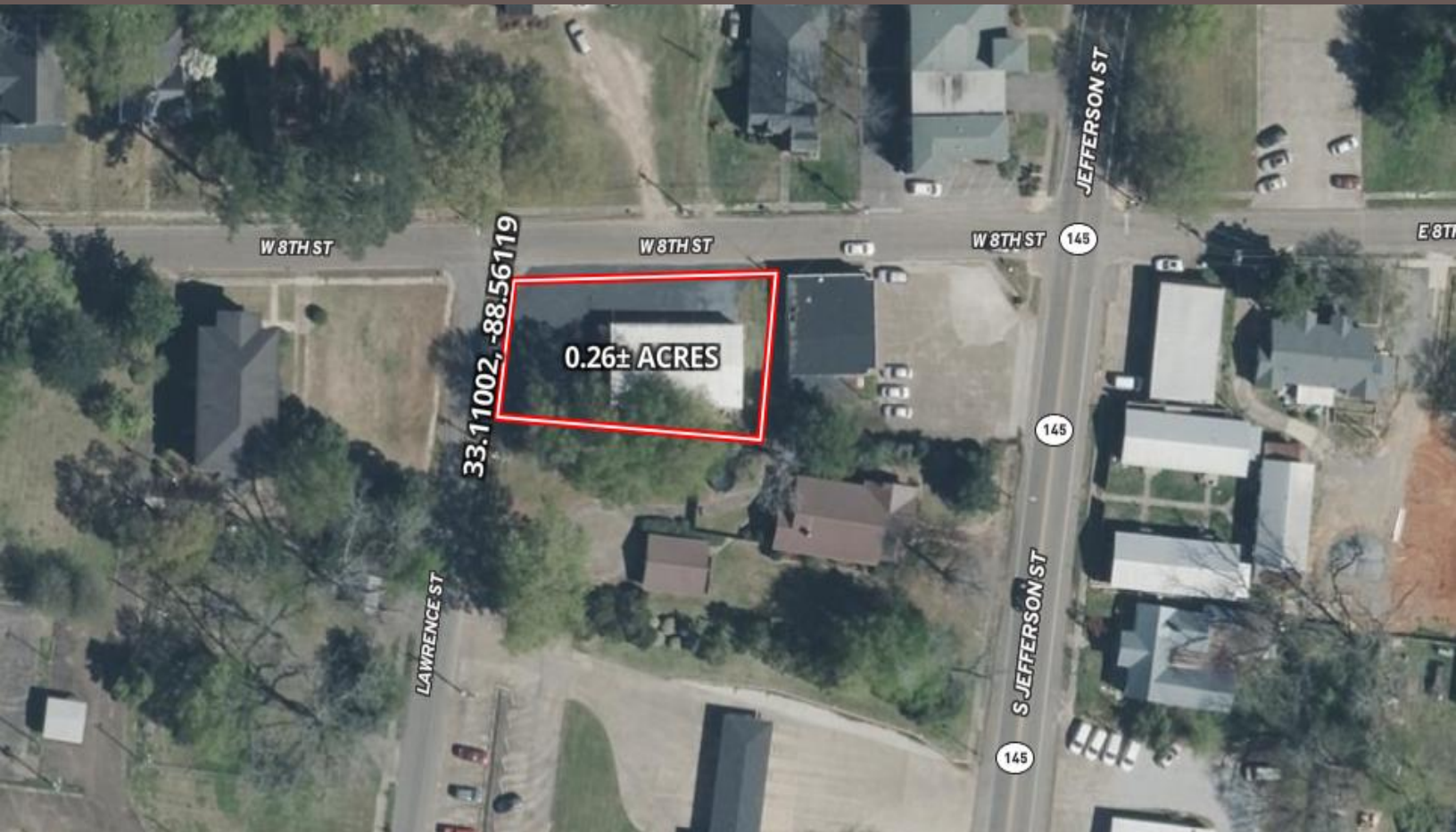
**TomSmithLandandHomes.com**

Information is believed to be accurate but not guaranteed.





# Aerial Map



[Click Here for LandID  
Interactive Map](#)

**WALKER TRANUM**  
MANAGING BROKER

O: 662.268.6333 | C: 662.769.1442  
Walker@TomSmithHomes.com



**TYLER KILGORE**  
REALTOR®

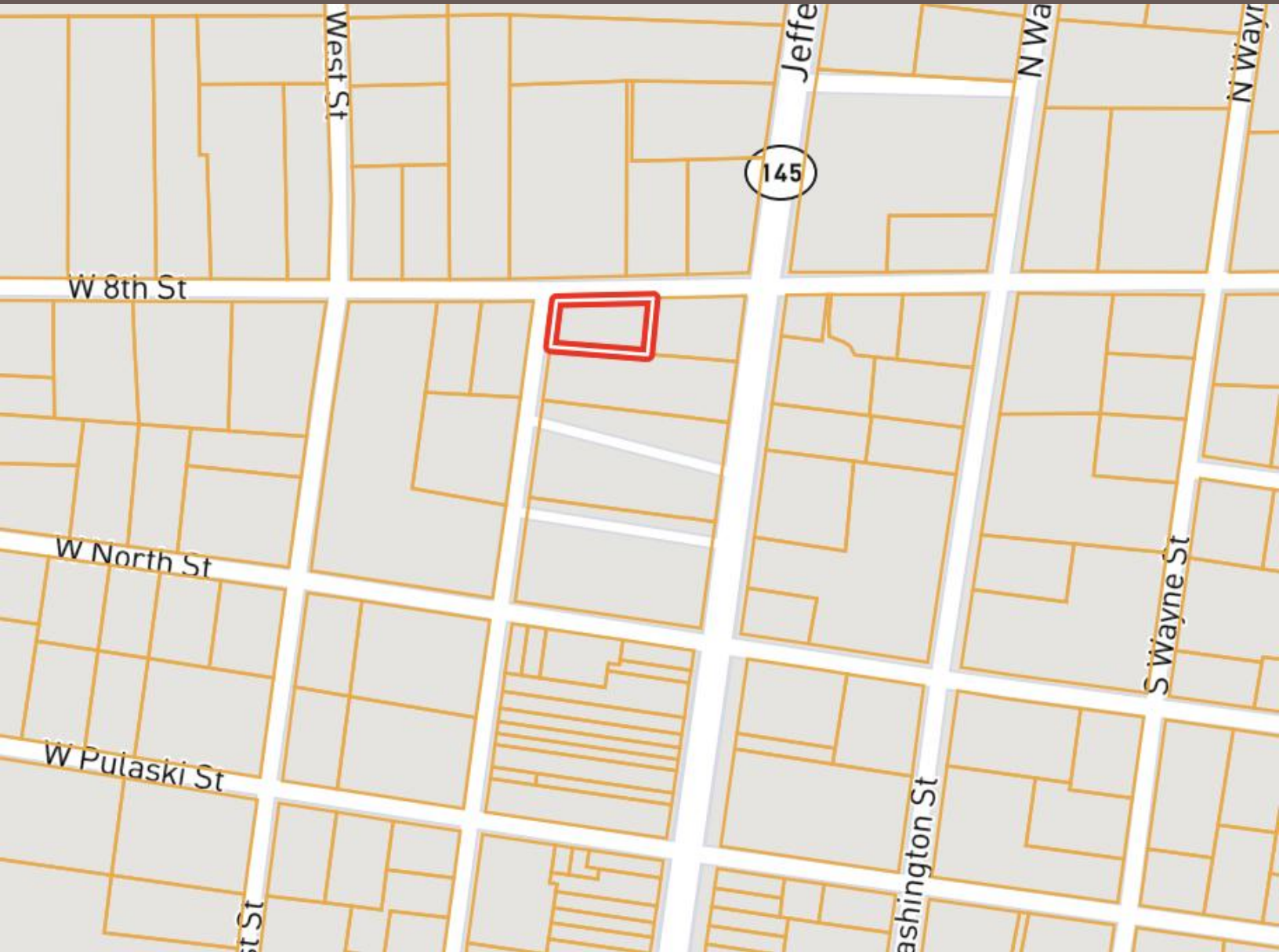
O: 662.268.6333 | C: 601.562.0688  
Tyler@TomSmithLand.com

**TomSmithLandandHomes.com**

Information is believed to be accurate but not guaranteed.



# Ownership Map



**WALKER TRANUM**  
MANAGING BROKER

O: 662.268.6333 | C: 662.769.1442  
Walker@TomSmithHomes.com

**TYLER KILGORE**  
REALTOR®

O: 662.268.6333 | C: 601.562.0688  
Tyler@TomSmithLand.com

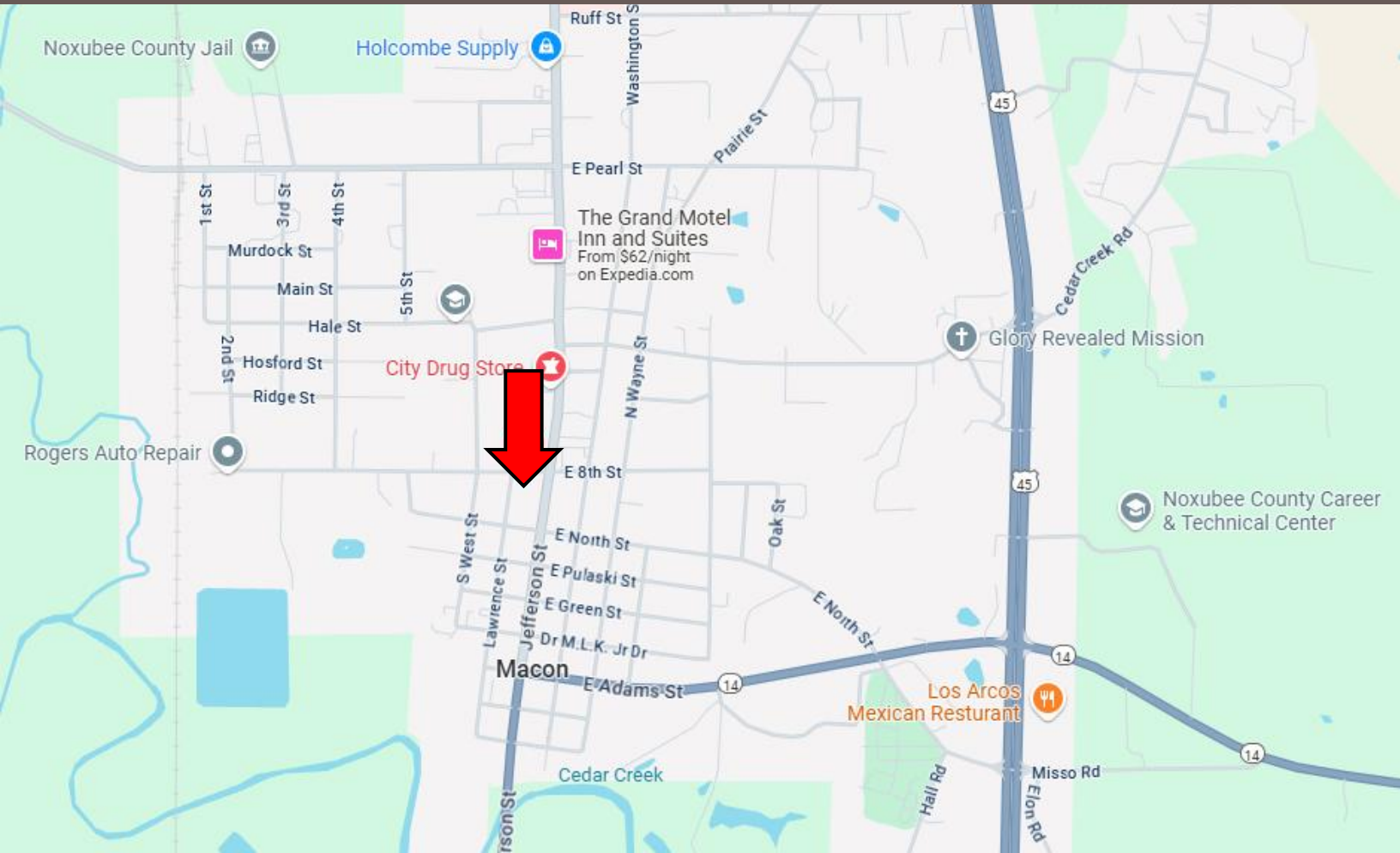
**TomSmithLandandHomes.com**

Information is believed to be accurate but not guaranteed.





# Directional Map



Directions from US-45 in Brooksville, MS: Merge onto US-45, in 4.4 miles turn right onto MS-145 S. Follow MS-145 S for 4.3 miles, turn right onto 8<sup>th</sup> Street and your destination will be on the left. [Google Map Link](#)



**WALKER TRANUM**  
MANAGING BROKER

O: 662.268.6333 | C: 662.769.1442  
[Walker@TomSmithHomes.com](mailto:Walker@TomSmithHomes.com)



**TYLER KILGORE**  
REALTOR®

O: 662.268.6333 | C: 601.562.0688  
[Tyler@TomSmithLand.com](mailto:Tyler@TomSmithLand.com)

**TomSmithLandandHomes.com**

Information is believed to be accurate but not guaranteed.

