

CHARMING 3 BEDROOM HOME

Bolivar County, MS



1006 Lamar St. Cleveland, MS 38732

\$185,000

This beautifully designed three bedroom, two bath home features an open-concept living, dining, and kitchen area—perfect for entertaining or relaxed family living. The spacious primary suite includes a large walk-in closet for maximum storage. A durable metal roof offers long-term value and low maintenance, and the expansive yard provides ample space for outdoor enjoyment. Additional highlights include 2-car covered parking, offering protection from the elements and added convenience. Nestled in a desirable neighborhood, this home blends comfort, practicality, and community charm. Call Lindsay today for your private showing!

Directions from the intersection of Hwy 8 and Hwy 61 Cleveland, MS: Travel West on Hwy 8 for approximately 1 mile. Turn left onto N. 5th Ave. and in 0.5 miles turn right onto Lamar St. In 256 ft the house will be on the right. [Click for Google Maps.](#)



LINDSAY
WILLIAMS

REALTOR®

Office: 662.441.2500

Cell: 662.719.8118

Lindsay@TomSmithLand.com



Expect More. Get More.

A Real Estate Expert You Can Trust

TomSmithLandandHomes.com

Information is believed to be accurate but not guaranteed.





A Real Estate Expert You Can Trust!

LINDSAY WILLIAMS
REALTOR®

O: 662.441.2500 C: 662.719.8118

Lindsay@TomSmithLand.com

TomSmithLandandHomes.com

**Tom
Smith**
LAND AND
HOMES

Expect More. Get More.

100% Report
2011-2024
BEST
BROKERAGES

Information is believed to be accurate but not guaranteed.



A Real Estate Expert *You Can Trust!*

LINDSAY WILLIAMS
REALTOR®

O: 662.441.2500 C: 662.719.8118

Lindsay@TomSmithLand.com

TomSmithLandandHomes.com



Expect More. Get More.



Information is believed to be accurate but not guaranteed.



A Real Estate Expert
You Can Trust!

LINDSAY WILLIAMS

REALTOR®

O: 662.441.2500 C: 662.719.8118

Lindsay@TomSmithLand.com

TomSmithLandandHomes.com

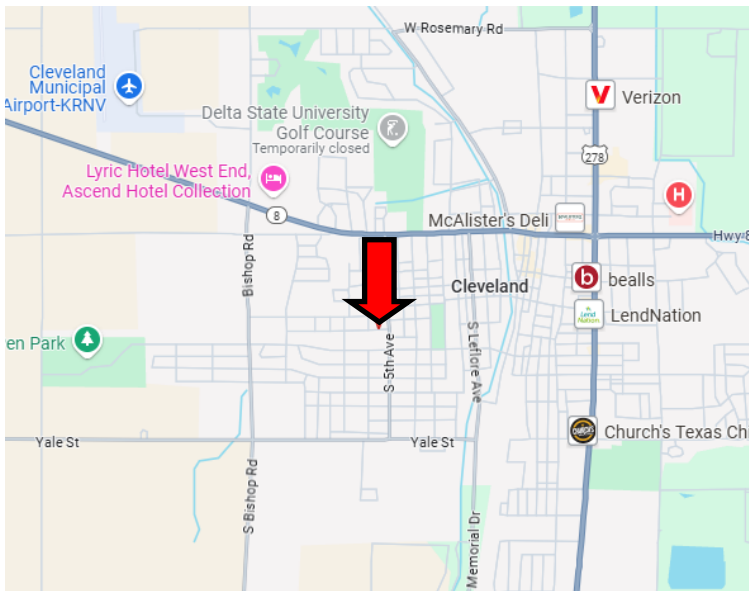
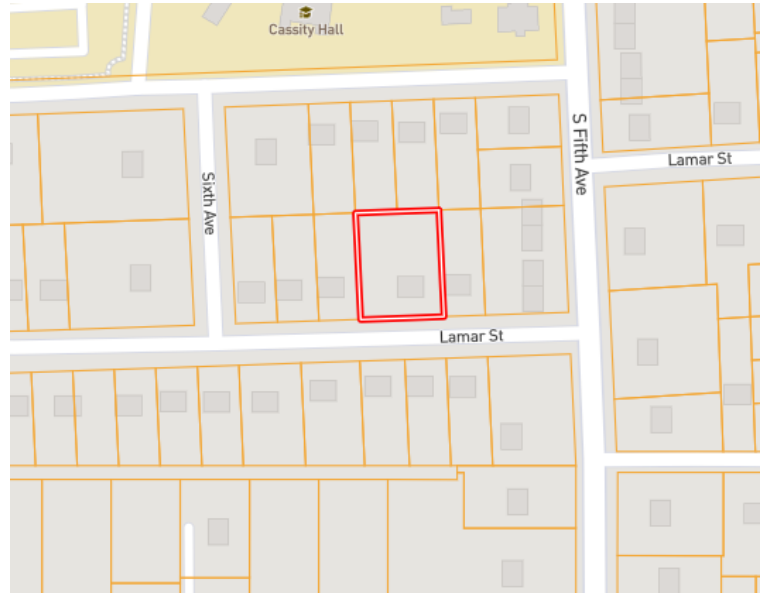
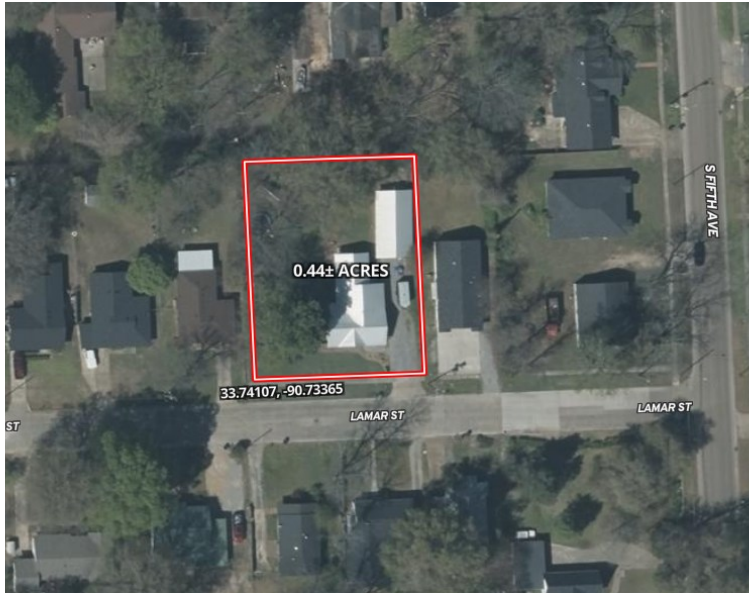


Expect More. Get More.



Information is believed to be accurate but not guaranteed.

MAPS



Directions from the intersection of Hwy 8 and Hwy 61 Cleveland, MS:

Travel West on Hwy 8 for approximately 1 mile. Turn left onto N. 5th Ave. and in 0.5 miles turn right onto Lamar St. In 256 ft the house will be on the right.

[Click for Google Maps.](#)

[Click Here for Interactive Map](#)



**LINDSAY
WILLIAMS**

REALTOR®

Office: 662.441.2500

Cell: 662.719.8118

Lindsay@TomSmithLand.com



Expect More. Get More.

A Real Estate Expert You Can Trust

TomSmithLandandHomes.com

Information is believed to be accurate but not guaranteed.

