

DRAWING NUMBER

DRAWING NUMBER

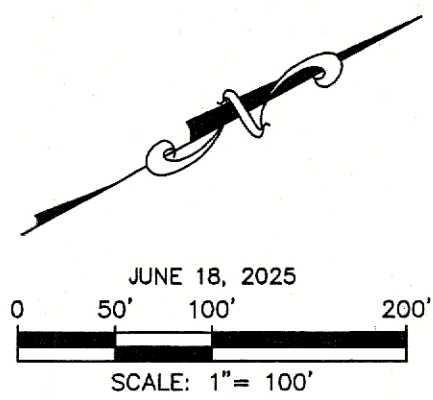
DRAWING NUMBER

SAFCO PRODUCTS • NEW HOPE, MINNESOTA
REORDER BY PART NUMBER 6552

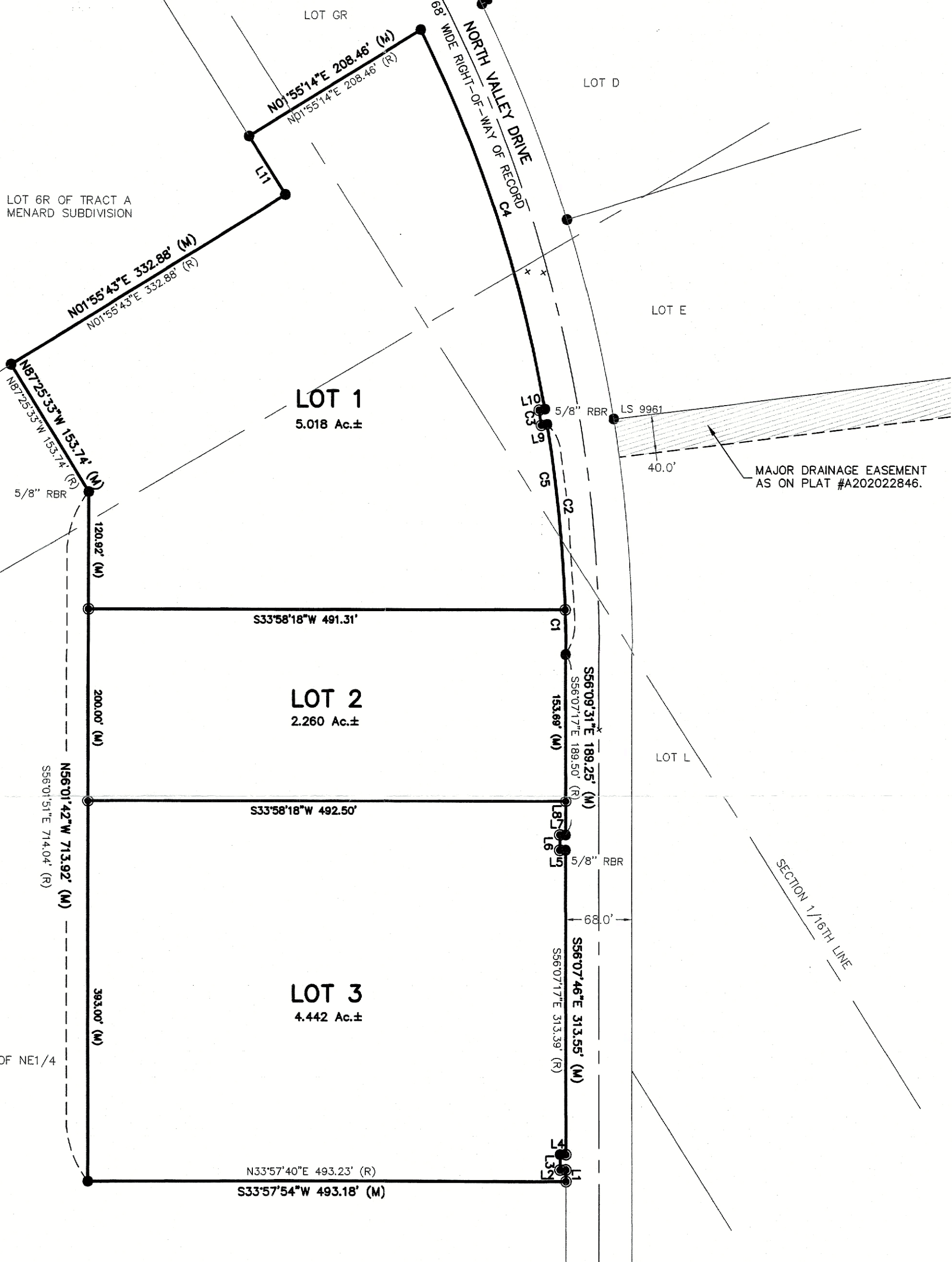
SAFCO PRODUCTS • NEW HOPE, MINNESOTA
REORDER BY PART NUMBER 6552

SAFCO PRODUCTS • NEW HOPE, MINNESOTA
REORDER BY PART NUMBER 6552

PLAT OF
LOTS 1-3 OF LOT J OF
NORTH VALLEY PARK SUBDIVISION
(formerly Lot J Of North Valley Park Subdivision)
LOCATED IN THE NE1/4 OF SECTION 32, T2N, R8E, BHM,
RAPID CITY, PENNINGTON COUNTY, SOUTH DAKOTA



JUNE 18, 2025
0 50' 100' 200'
SCALE: 1" = 100'



NOTES:

UTILITY AND MINOR DRAINAGE EASEMENTS: 8' ON THE INTERIOR SIDES OF ALL LOT LINES.

ANY MAJOR DRAINAGE EASEMENT SHOWN HEREON SHALL BE KEPT FREE OF ALL OBSTRUCTIONS INCLUDING BUT NOT LIMITED TO BUILDINGS, WALLS, FENCES, HEDGES, TREES AND SHRUBS. THESE EASEMENTS GRANT TO ALL PUBLIC AUTHORITIES THE RIGHT TO CONSTRUCT, OPERATE, MAINTAIN, INSPECT, AND REPAIR SUCH IMPROVEMENTS AND STRUCTURES AS IT DEEMS EXPEDIENT TO FACILITATE DRAINAGE FROM ANY SOURCE.

LEGEND

- Denotes set rebar with survey cap marked "Renner Assoc. 9213".
- Denotes Found Survey Monument marked LS 9961, unless otherwise noted. (NA) Not accepted this survey.
- (R) Denotes recorded in previous plat or description.
- (M) Denotes measured in this survey.

BASIS OF BEARINGS:

BASIS OF BEARING IS CITY OF RAPID CONTROL NETWORK — SOUTH DAKOTA STATE PLANE SOUTH ZONE, (NAD83—2011).



LINE TABLE

LINE #	LENGTH	DIRECTION
L1 (M)	11.99'	S56°07'46"E
L1 (R)	11.99'	S56°07'17"E
L2 (M)	6.00'	N33°52'14"E
L2 (R)	6.00'	N33°52'43"E
L3 (M)	16.00'	S56°07'46"E
L3 (R)	16.00'	S56°07'17"E
L4 (M)	6.00'	S33°52'12"W
L4 (R)	6.00'	S33°52'43"W
L5 (M)	6.00'	N33°58'44"E
L5 (R)	6.00'	N33°52'43"E
L6 (M)	15.85'	S56°01'16"E
L6 (R)	16.00'	S56°07'17"E
L7 (M)	6.00'	S33°58'44"W
L7 (R)	6.00'	S33°52'43"W
L8 (M)	35.56'	S56°09'31"E
L9 (M)	6.00'	N23°48'03"E
L9 (R)	6.00'	N23°12'54"E
L10 (M)	6.00'	S24°06'19"W
L10 (R)	6.00'	S23°12'54"W
L11 (M)	71.13'	N88°01'19"W
L11 (R)	71.28'	N88°02'06"W

CURVE TABLE

CURVE #	LENGTH	RADIUS	DELTA	CHORD DIRECTION	CHORD LENGTH
C1 (M)	46.32'	1466.00'	1°48'37"	S57°03'59"E	46.32'
C2 (M)	238.66'	1466.00'	9°19'39"	S60°49'30"E	238.39'
C2 (R)	238.57'	1466.00'	9°19'26"	S60°47'01"E	238.30'
C3 (M)	16.00'	1460.00'	0°37'40"	S64°51'47"E	16.00'
C3 (R)	16.00'	1460.00'	0°37'41"	S65°45'13"E	16.00'
C4 (M)	414.62'	1466.00'	16°12'16"	S74°10'27"E	413.23'
C4 (R)	414.76'	1466.00'	16°12'37"	S74°10'33"E	413.38'
C5 (M)	192.34'	1466.00'	7°31'01"	S61°43'48"E	192.20'

