

Bayou Front Property in Sunflower County, MS
207 West Percy Street, Indianola, MS 38751 | \$145,000



Enjoy peaceful bayou views and downtown convenience in this well-maintained 3 bedroom, 2 bathroom home on a spacious 0.74-acre lot. Features include 1,650 sq ft of living space, central HVAC, a 200 sq ft detached work shed, and a 150 sq ft wooden back deck perfect for relaxing or entertaining. Also includes a one-car carport, and is just a short walk to City Hall, the grocery store, and the post office. A rare mix of privacy and location! Call Emerson today to schedule your private showing!



**EMERSON
LOVELACE**

REALTOR®

Office: 662.441.2500

Cell: 601.715.3302

Emerson@TomSmithLand.com



Expect More. Get More.

A Real Estate Expert You Can Trust

TomSmithLandandHomes.com

Information is believed to be accurate but not guaranteed.





A Real Estate Expert
You Can Trust!

EMERSON LOVEFACE
REALTOR®

O: 662.441.2500 C: 601.715.3302

Emerson@TomSmithLand.com

TomSmithLandandHomes.com

Tom Smith
LAND AND HOMES

Expect More. Get More.

100% Report
2011-2024
BEST
BROKERAGES

Information is believed to be accurate but not guaranteed.



A Real Estate Expert
You Can Trust!

EMERSON LOVELACE
REALTOR®

O: 662.441.2500 C: 601.715.3302

Emerson@TomSmithLand.com

TomSmithLandandHomes.com

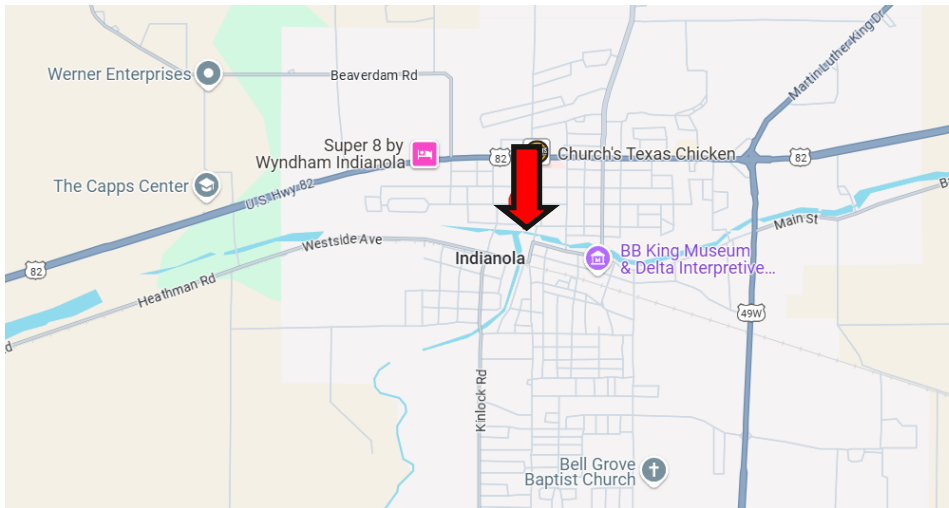
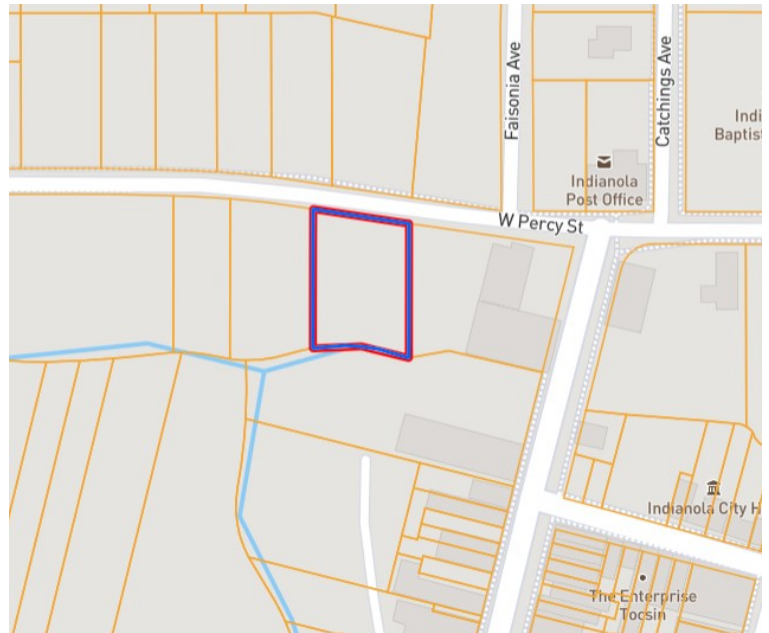
Tom Smith
LAND AND HOMES

Expect More. Get More.

100% Report
2011-2024
BEST
BROKERAGES

Information is believed to be accurate but not guaranteed.

MAPS | LandID Interactive Map



Directions from US-82 in Indianola, MS:
Head west on US-82 W toward Martin Luther King Dr for 1.1 mi.
Turn left onto Catchings Avenue, in 0.3 mi turn right onto W Percy Street. Your destination will be on the left.

[Google Map Link](#)



**EMERSON
LOVELACE**

REALTOR®

Office: 662.441.2500

Cell: 601.715.3302

Emerson@TomSmithLand.com



Expect More. Get More.

A Real Estate Expert You Can Trust

TomSmithLandandHomes.com

Information is believed to be accurate but not guaranteed.

