

3-Bedroom, 1-Bathroom Home
624 S. Leflore Ave., Cleveland, MS | \$76,500



This three-bedroom, one-bathroom home offers 1,313± SF and was built in 1947 in Cleveland, Bolivar County, MS. The home features beautiful hardwood floors in the living room and two bedrooms. The large living room flows into the dining area and kitchen. Off of the kitchen is a spacious laundry room offering plenty of space for storage and organization. Don't miss out—Contact Tracey Bell today to schedule your private showing and learn more about this property!



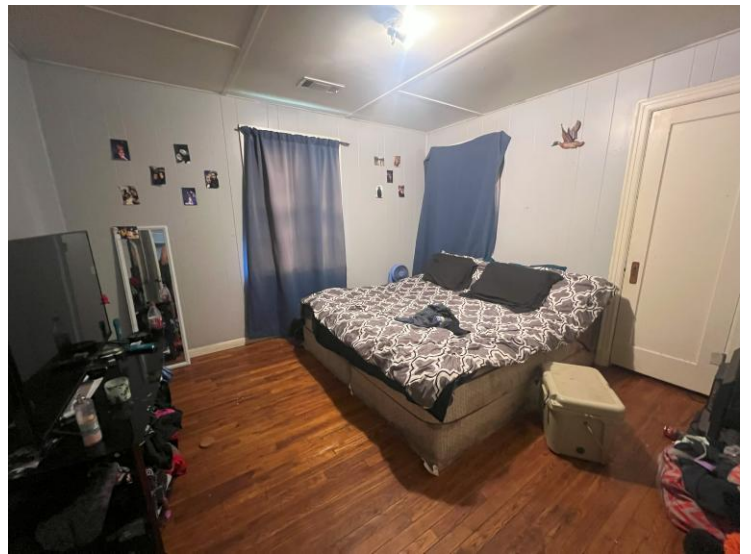
**TRACEY
BELL**
MANAGING BROKER
Office: 662.441.2500
Cell: 662.719.4720
Tracey@TomSmithLand.com



A Real Estate Expert You Can Trust
TomSmithLandandHomes.com

Information is believed to be accurate but not guaranteed.





A Real Estate Expert
You Can Trust!

TRACEY BELL

MANAGING BROKER

O: 662.441.2500 C: 662.719.4720

Tracey@TomSmithLand.com

TomSmithLandandHomes.com

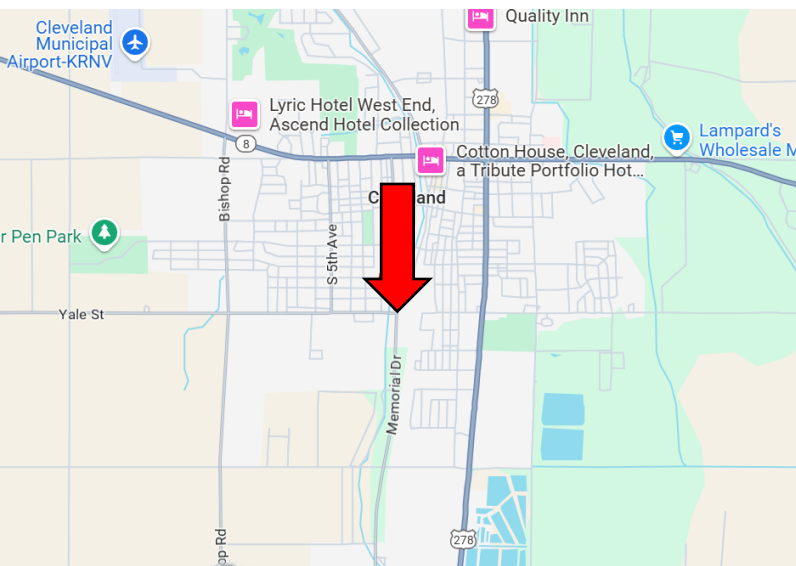
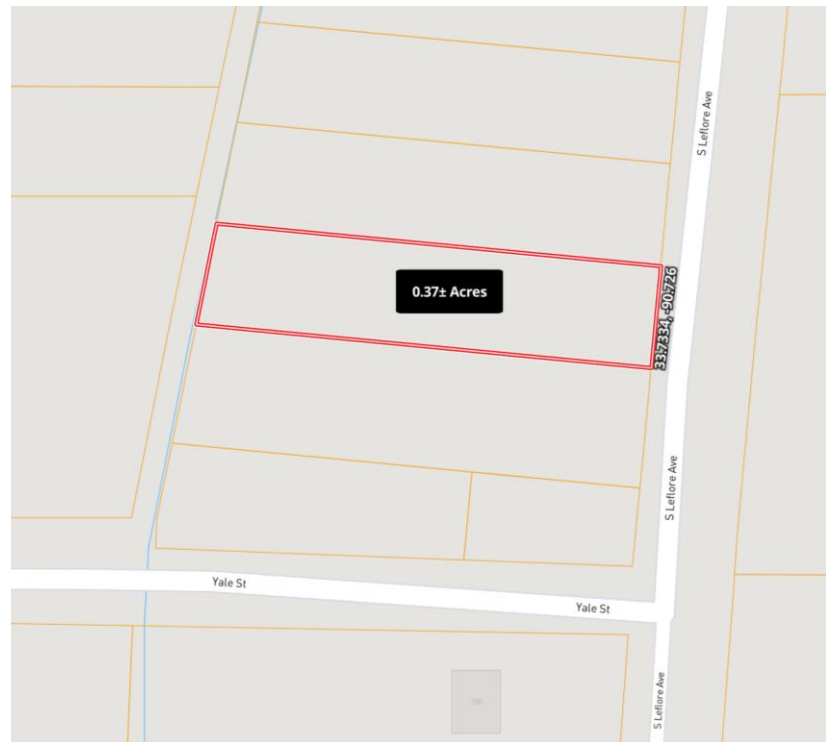
Tom Smith
LAND AND HOMES

Expect More. Get More.

LandAgent
2011-2024
NATIONAL
BEST
BROKERAGES

Information is believed to be accurate but not guaranteed.

MAPS | [Click for Interactive Map](#)



Address: 624 S. Leflore Avenue, Cleveland, MS 38732

Directions from Hwy 8 & Hwy 61 in Cleveland:

Travel west on Hwy 8 for 0.6 miles, then turn left on N. Leflore Avenue. After 1 mile, the home will be on the right.

[Click for Google Maps](#)



**TRACEY
BELL**

MANAGING BROKER

Office: 662.441.2500

Cell: 662.719.4720

Tracey@TomSmithLand.com



Expect More. Get More.

A Real Estate Expert You Can Trust

TomSmithLandandHomes.com

Information is believed to be accurate but not guaranteed.

