

TURN-KEY HUNTING ESTATE

500± Acres in Holmes County, MS

\$2,525,000

DRONE LINK



LAND & WILDLIFE:

- 500± Acres
- 5,000± sawtooth oak trees planted over 20± years
- 400± Acres of mature timber
- Gated and secured entrance
- Over half a mile of privacy fencing
- 10 large, established food plots
 - Each with shooting houses
- Internal road system

• Culverts & bridges

- Two creeks
- 9 total ponds
 - 4 stocked ponds

- Professionally managed for deer and turkey over 25± years

MAIN LODGE:

- 2,100 sq. ft.
- 3 BR/2BA
- Full kitchen
- Wood burning fireplace

• Covered front porch

- Large deck with built-in firepit

WORKSHOP:

- 75'x75' insulated building
- Outdoor kitchen
- ATV storage
- Automated skinning rack with drains

CARETAKER'S HOME:

- 2,900 sq. ft. | 3BR/2BA



**TOM
SMITH**

ALC®, BROKER

Office: 601.898.2772

Cell: 601.454.9397

Tom@TomSmithLand.com



Call The Land Man Today!

TomSmithLandandHomes.com

Information is believed to be accurate but not guaranteed.



Have you ever dreamed of what one of the finest properties in the Southeast would look like? Well, now you can see for yourself! This 500± acre tract, located just five minutes from Lexington, MS, is waiting for you and your family. The property offers complete privacy, with over half a mile of fencing and a gated, secured entrance.

As you enter, you'll be welcomed by a stunning quarter-mile drive through rolling pastures and towering timber, passing three ponds on the way to your very own lodge. There, you'll find a beautiful 2,100 sq. ft., 3-bedroom, 2-bathroom home featuring a professional kitchen, living room, family room with wood-burning fireplace, laundry room, covered front porch, and a large deck with a built-in firepit.

Behind the lodge is a 75' x 75' insulated barn/workshop and man cave, complete with an outdoor kitchen, automated skinning rack with drains, and plenty of storage for your ATVs. Also on the property is a recently updated 2,900 sq. ft., 3-bedroom, 2-bathroom home for a caretaker.

The land itself is incredible, featuring 10 large, established food plots with shooting houses, all connected by an outstanding internal road system with culverts and bridges for full access. Two beautiful creeks run through the property, providing all the washed gravel you could ever need. Summer food plots are planted and thriving, attracting deer, while fruit trees have been strategically planted around high-traffic feeding areas. Over the past 20+ years, more than 5,000 sawtooth oak trees have also been planted. This tract has 400± acres of mature timber with 80% of it being hardwood. There are also approximately 75± acres of beautiful rolling fields and pastures that produce 100, 5ft round hay bales per cutting. This would make outstanding pastures if you wanted to add cattle or horses.

The property includes nine watering holes (ponds) throughout the woods to ensure wildlife hydration. Game management here is second to none. It has been professionally maintained for over 25 years for both whitetail deer and turkey. In fact, a Mississippi state record buck was recently harvested on the property.

The owners have spared no expense in developing this tract into one of Mississippi's premier recreational hunting retreats. And when you're ready to relax after a day in the woods, grab a rod and reel in a trophy bass from one of the four stocked fishing ponds. This property is as good as you are going to find in Mississippi. Call Tom today to schedule your private viewing of this remarkable retreat!

**** Qualified Buyers Only ****

TOM SMITH

ALC®, BROKER

Office: 601.898.2772

Cell: 601.454.9397

Tom@TomSmithLand.com



Call The Land Man Today!

TomSmithLandandHomes.com

Information is believed to be accurate but not guaranteed.



PROPERTY ALSO INCLUDES:

All furnishings in both homes, the shop and tools, all of the following equipment:

- Two Disc
- Sub Grader
- 7 Row Planter
- Gas and Deisel Fuel Tanks (250 gal tanks)
- Roller/Packer
- Log Splitter
- 12 Ft. Trailer
- Aerator
- Air Compressor
- Four Refrigerators
- Commercial Ice Machine
- 16 ft. Bass Boat w/ 40 hp Mariner Outboard Motor
- Road Grader
- Hopper w Wheels
- Tools and Toolbox
- New John Deere 65 HP Tractor
- Two Bush Hogs
- 7 ft Side Arm Bush Hog
- Box Blade

TOM SMITH

ALC®, BROKER

Office: 601.898.2772

Cell: 601.454.9397

Tom@TomSmithLand.com



Call The Land Man Today!

TomSmithLandandHomes.com

Information is believed to be accurate but not guaranteed.





TOM SMITH

ALC®, BROKER

Office: 601.898.2772

Cell: 601.454.9397

Tom@TomSmithLand.com



Call The Land Man Today!

TomSmithLandandHomes.com

Information is believed to be accurate but not guaranteed.





TOM SMITH

ALC®, BROKER

Office: 601.898.2772

Cell: 601.454.9397

Tom@TomSmithLand.com



Call The Land Man Today!

TomSmithLandandHomes.com

Information is believed to be accurate but not guaranteed.





TOM SMITH

ALC®, BROKER

Office: 601.898.2772

Cell: 601.454.9397

Tom@TomSmithLand.com



Call The Land Man Today!

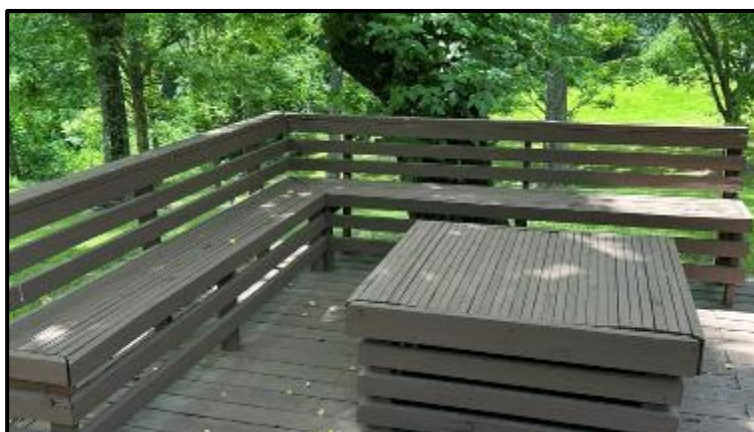
TomSmithLandandHomes.com

Information is believed to be accurate but not guaranteed.





Main Lodge



TOM SMITH

ALC®, BROKER

Office: 601.898.2772

Cell: 601.454.9397

Tom@TomSmithLand.com



Call The Land Man Today!

TomSmithLandandHomes.com

Information is believed to be accurate but not guaranteed.





TOM SMITH

ALC®, BROKER

Office: 601.898.2772

Cell: 601.454.9397

Tom@TomSmithLand.com



Call The Land Man Today!

TomSmithLandandHomes.com

Information is believed to be accurate but not guaranteed.





TOM SMITH

ALC®, BROKER

Office: 601.898.2772

Cell: 601.454.9397

Tom@TomSmithLand.com



Call The Land Man Today!

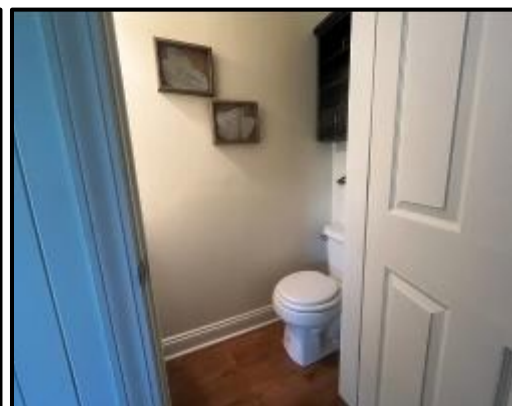
TomSmithLandandHomes.com

Information is believed to be accurate but not guaranteed.





Caretaker's Home



TOM SMITH

ALC®, BROKER

Office: 601.898.2772

Cell: 601.454.9397

Tom@TomSmithLand.com



Call The Land Man Today!

TomSmithLandandHomes.com

Information is believed to be accurate but not guaranteed.





TOM SMITH

ALC®, BROKER

Office: 601.898.2772

Cell: 601.454.9397

Tom@TomSmithLand.com

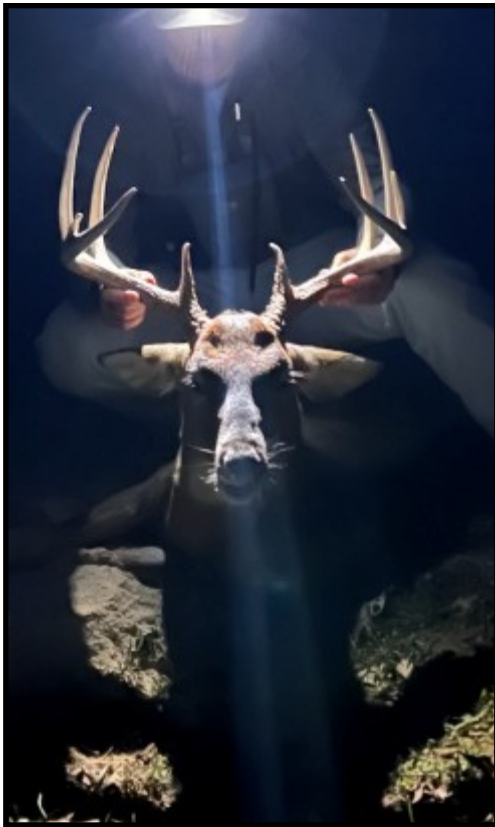


Call The Land Man Today!

TomSmithLandandHomes.com

Information is believed to be accurate but not guaranteed.





TOM SMITH

ALC®, BROKER

Office: 601.898.2772

Cell: 601.454.9397

Tom@TomSmithLand.com



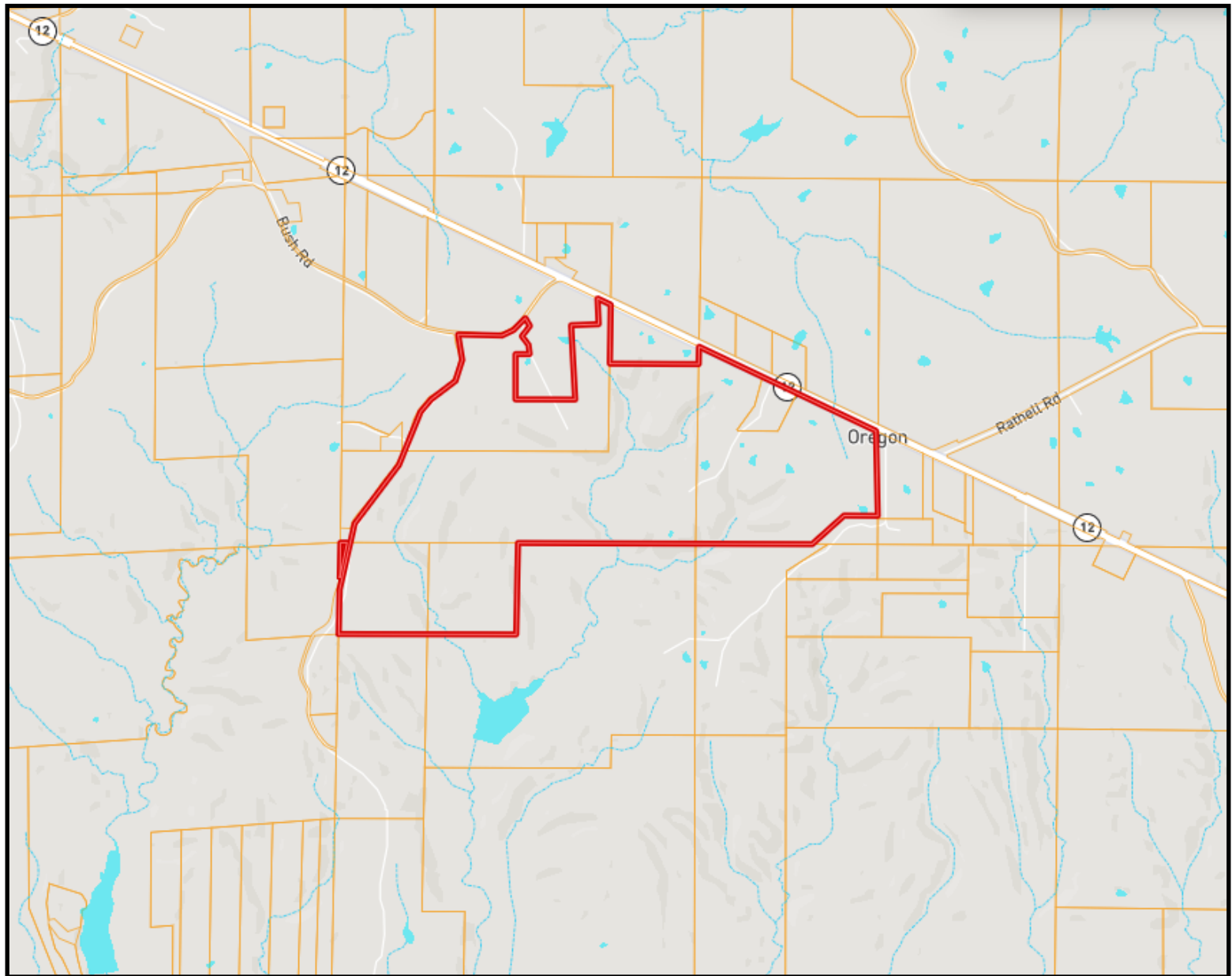
Call The Land Man Today!

TomSmithLandandHomes.com

Information is believed to be accurate but not guaranteed.



OWNERSHIP MAP



TOM SMITH

ALC®, BROKER

Office: 601.898.2772

Cell: 601.454.9397

Tom@TomSmithLand.com



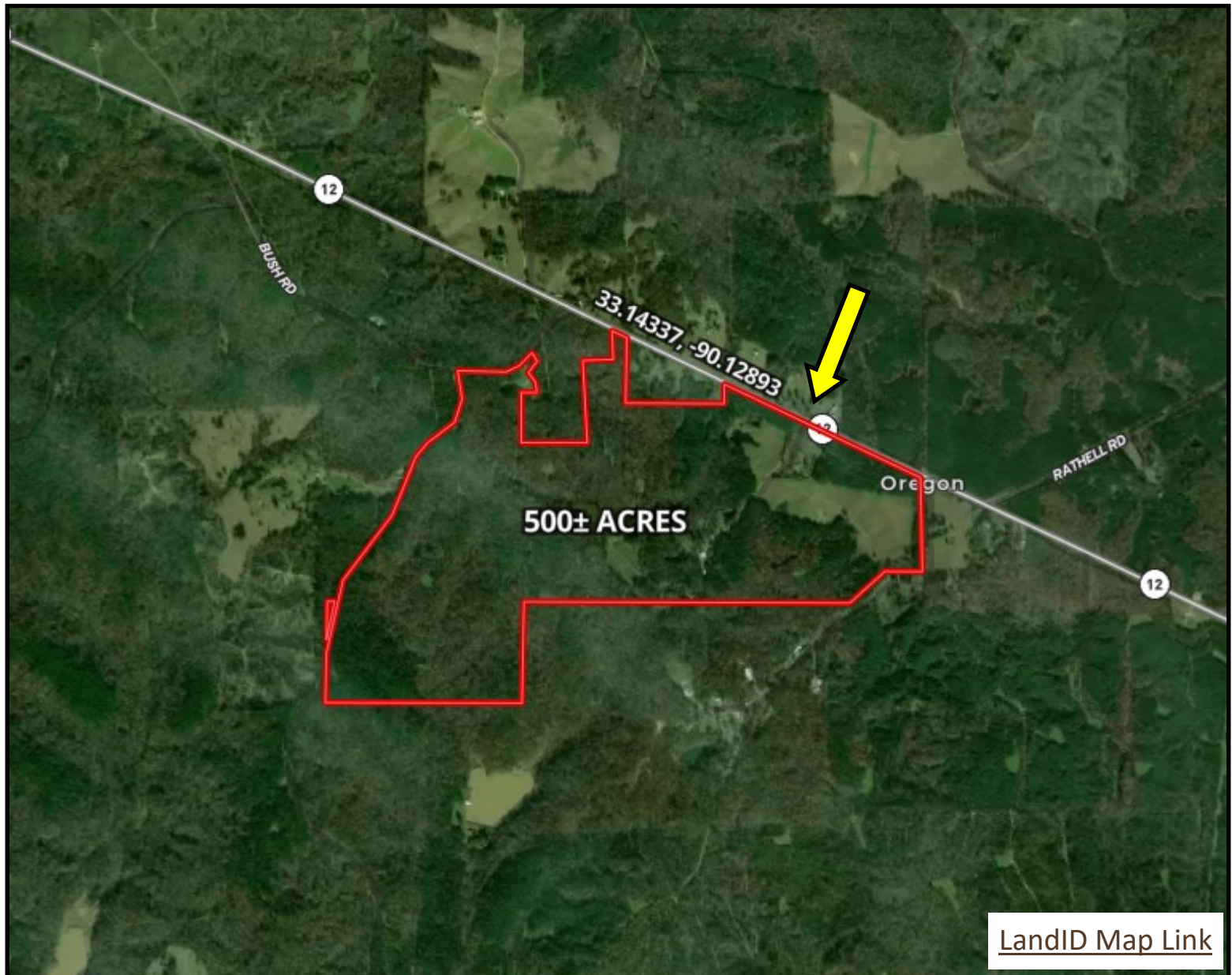
Call The Land Man Today!

TomSmithLandandHomes.com

Information is believed to be accurate but not guaranteed.



AERIAL MAP



TOM SMITH

ALC®, BROKER

Office: 601.898.2772

Cell: 601.454.9397

Tom@TomSmithLand.com



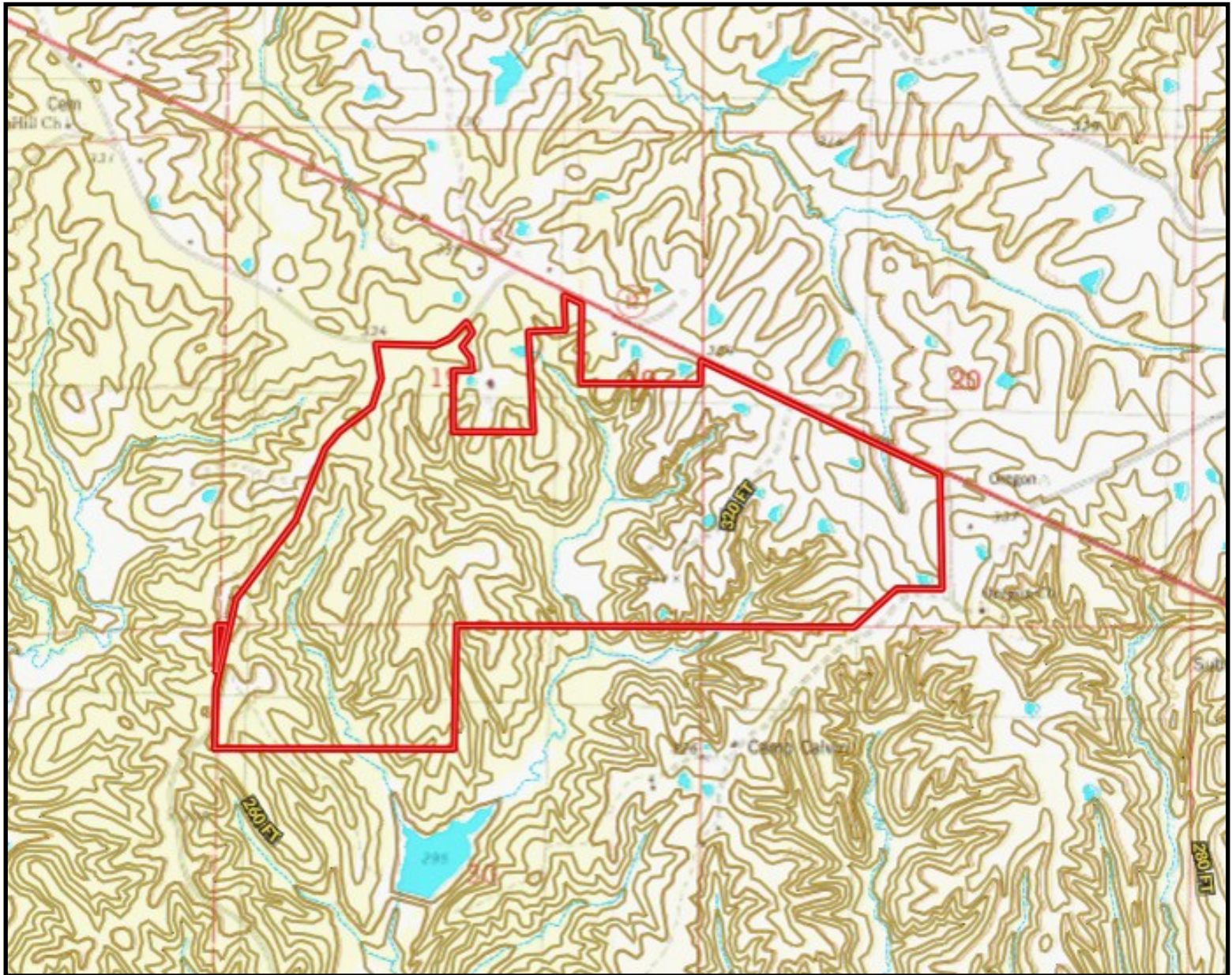
Call The Land Man Today!

TomSmithLandandHomes.com

Information is believed to be accurate but not guaranteed.



TOPOGRAPHY MAP



TOM SMITH

ALC®, BROKER

Office: 601.898.2772

Cell: 601.454.9397

Tom@TomSmithLand.com



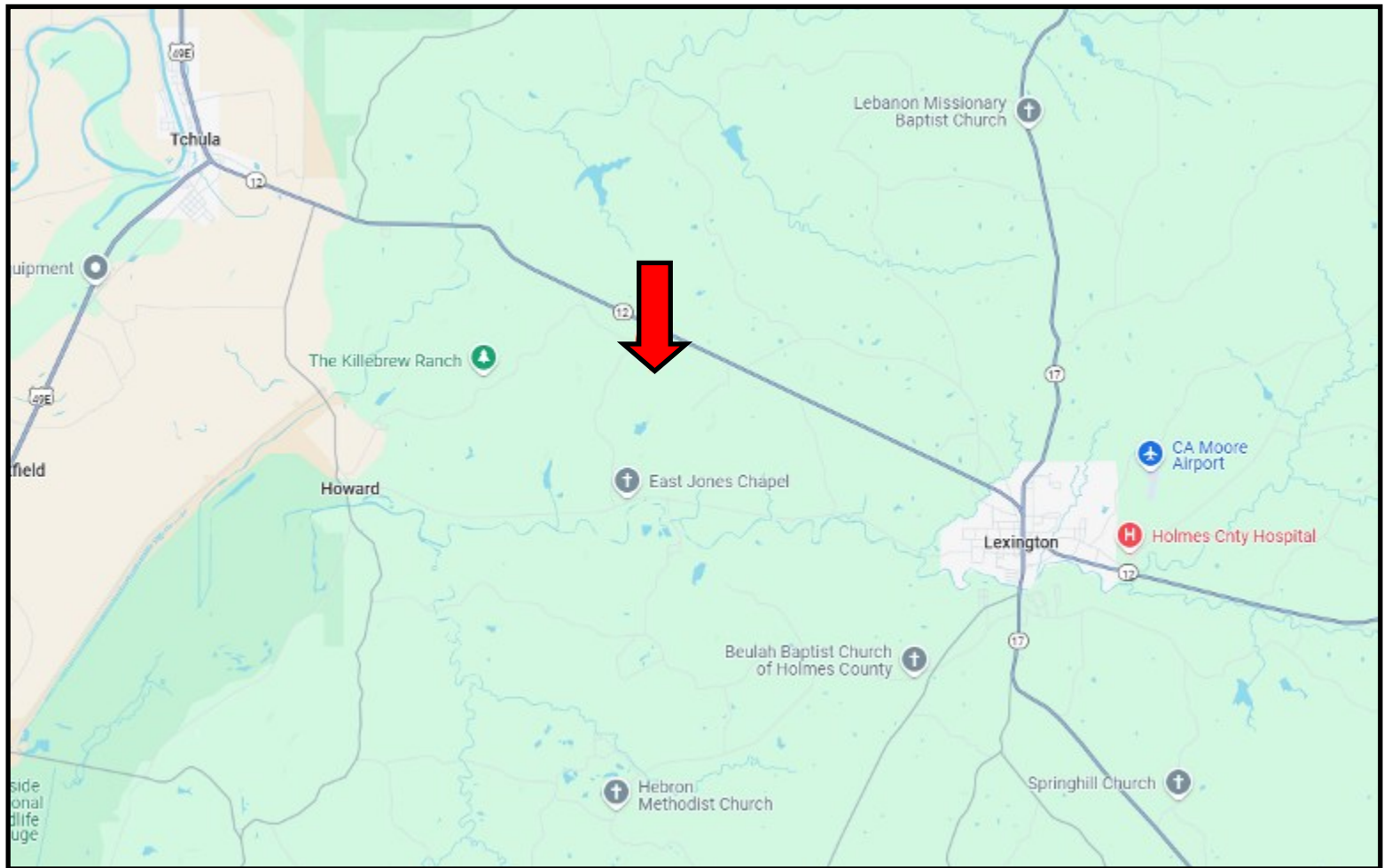
Call The Land Man Today!

TomSmithLandandHomes.com

Information is believed to be accurate but not guaranteed.



DIRECTIONAL MAP



Directions from I-55 in Richland, MS: Travel on MS-17 for 13.2 miles. Take a slight left onto MS-12 and follow for 4.9 miles. Turn left onto Bush Road and in 0.3 miles, your destination will be on the left.

[Google Maps Link](#)



**TOM
SMITH**

ALC®, BROKER

Office: 601.898.2772

Cell: 601.454.9397

Tom@TomSmithLand.com



Call The Land Man Today!

TomSmithLandandHomes.com

Information is believed to be accurate but not guaranteed.

