

Modern Country Living
Stunning Home on 11.8± Acres in Hinds County



1425 Pine Hill Dr., Raymond, MS 39154 | \$574,900

Discover the perfect blend of modern design and serene countryside in this stunning 4-bedroom, 3.5-bath home, nestled on 11.8 private acres in Raymond, Mississippi. Built in 2020 and meticulously maintained, this 2,925 sq ft home offers the comfort of a move-in-ready property with the space and privacy you've been searching for. Step inside to an inviting open floor plan that seamlessly connects the living, dining, and kitchen areas—ideal for entertaining or relaxing with family. Large windows bring in natural light and offer peaceful views of the expansive property. The kitchen features sleek finishes, plenty of counter space, and a layout designed for both function and style. The spacious primary suite includes a luxurious en-suite bath and generous closet space. Three more bedrooms provide ample room for guests, kids, or a home office. Whether you're looking for modern country living or a peaceful retreat with room to grow, this home checks every box. Call Josh today to see it for yourself!

**JOSH
WREN**

REALTOR®

Office: 601.898.2772

Cell: 601.497.9440

Josh@TomSmithLand.com



Expect More. Get More.

A Real Estate Expert You Can Trust

TomSmithLandandHomes.com

Information is believed to be accurate but not guaranteed.





**JOSH
WREN**

REALTOR®

Office: 601.898.2772

Cell: 601.497.9440

Josh@TomSmithLand.com



Expect More. Get More.

A Real Estate Expert You Can Trust

TomSmithLandandHomes.com

Information is believed to be accurate but not guaranteed.





**JOSH
WREN**
REALTOR®

Office: 601.898.2772
Cell: 601.497.9440
Josh@TomSmithLand.com

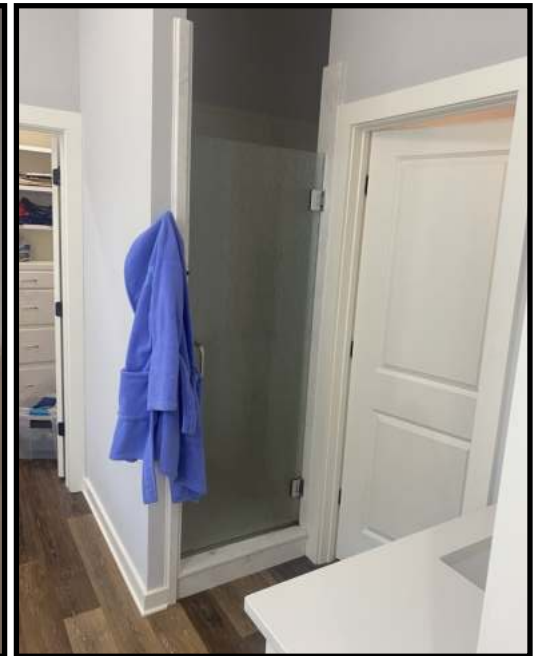
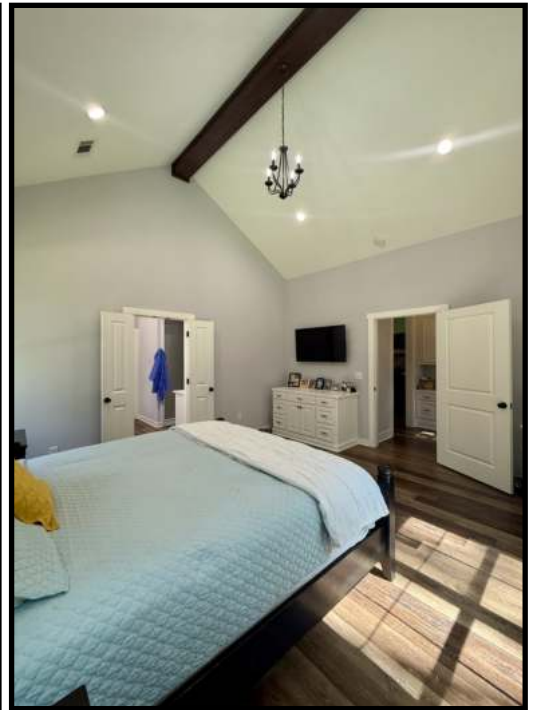


Expect More. Get More.

A Real Estate Expert You Can Trust
TomSmithLandandHomes.com

Information is believed to be accurate but not guaranteed.





**JOSH
WREN**

REALTOR®

Office: 601.898.2772

Cell: 601.497.9440

Josh@TomSmithLand.com



Expect More. Get More.

A Real Estate Expert You Can Trust

TomSmithLandandHomes.com

Information is believed to be accurate but not guaranteed.





**JOSH
WREN**
REALTOR®

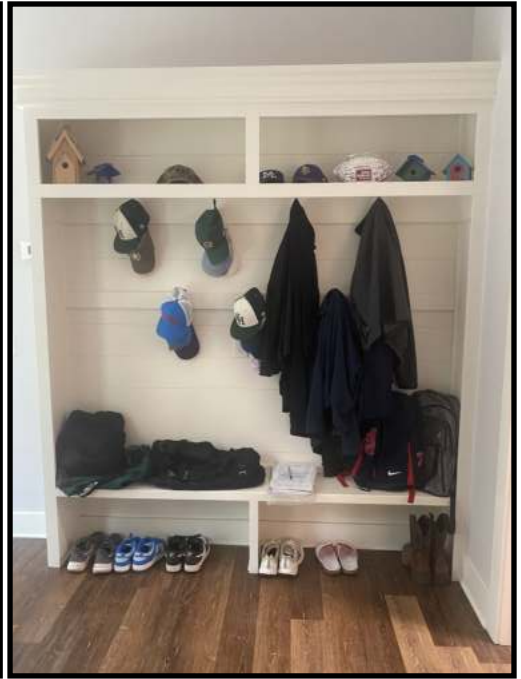
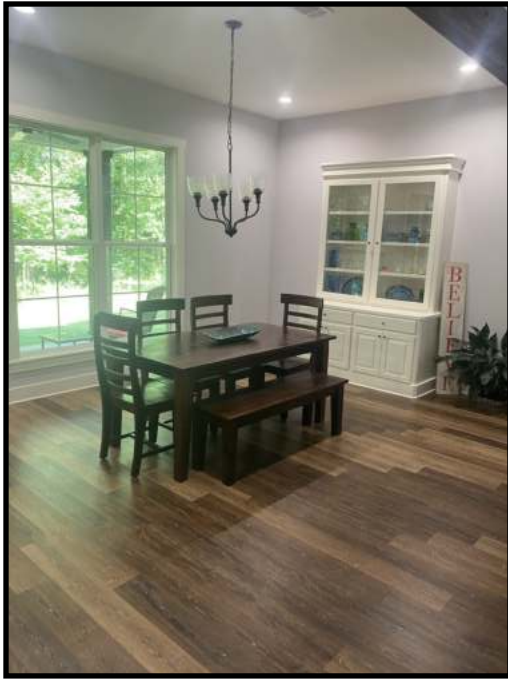
Office: 601.898.2772
Cell: 601.497.9440
Josh@TomSmithLand.com



A Real Estate Expert You Can Trust
TomSmithLandandHomes.com

Information is believed to be accurate but not guaranteed.





**JOSH
WREN**
REALTOR®

Office: 601.898.2772
Cell: 601.497.9440
Josh@TomSmithLand.com



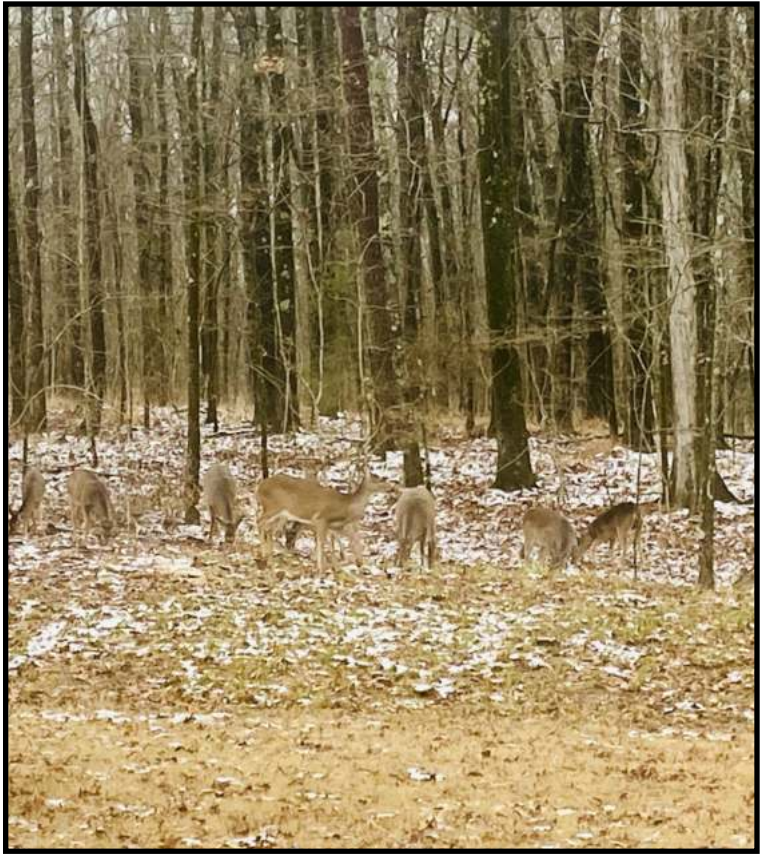
Expect More. Get More.

A Real Estate Expert You Can Trust

TomSmithLandandHomes.com

Information is believed to be accurate but not guaranteed.





**JOSH
WREN**
REALTOR®
Office: 601.898.2772
Cell: 601.497.9440
Josh@TomSmithLand.com



Expect More. Get More.

A Real Estate Expert You Can Trust
TomSmithLandandHomes.com

Information is believed to be accurate but not guaranteed.



Aerial Map



[Click Here for LandID Interactive Map](#)

**JOSH
WREN**

REALTOR®

Office: 601.898.2772

Cell: 601.497.9440

Josh@TomSmithLand.com



Expect More. Get More.

A Real Estate Expert You Can Trust

TomSmithLandandHomes.com

Information is believed to be accurate but not guaranteed.



Ownership Map



**JOSH
WREN**

REALTOR®

Office: 601.898.2772

Cell: 601.497.9440

Josh@TomSmithLand.com



Expect More. Get More.

A Real Estate Expert You Can Trust

TomSmithLandandHomes.com

Information is believed to be accurate but not guaranteed.



Directional Map



Directions from the intersection on I-20 and MS-18 in Jackson, MS: Merge onto MS -18 and follow for 9 miles. Take a right onto County Farm Rd and then continue on-to E Main St for 1.9 miles. Cross over onto Raymond Bolton Rd. Turn left onto Pine Hill Drive and in 0.6 miles your destination will be on the left. [Google Map Link](#)

Address: 1425 Pine Hill Drive, Raymond, MS 39154

**JOSH
WREN**

REALTOR®

Office: 601.898.2772

Cell: 601.497.9440

Josh@TomSmithLand.com



Expect More. Get More.

A Real Estate Expert You Can Trust

TomSmithLandandHomes.com

Information is believed to be accurate but not guaranteed.

