

Hunting or Country Retreat

30± ACRES IN ATTALA COUNTY, MS • \$69,000



Located off Attala Road 5001 in the Zama community of Attala County, this 30± acre tract offers the option to add up to approximately 50± acres total. Just 18 miles from Kosciusko, Carthage, Philadelphia, and Louisville, with easy access to Highways 25 and 19, the property combines convenience with the peace of the country. Featuring 6-year-old natural regrowth that provides excellent deer and turkey habitat, it also offers county road frontage, community water through Zama Water Association, and electricity through Central Electric Power Association. The tract adjoins a portion of CRP ground where hunting rights may be obtainable, creating even more opportunities right out your back door. Whether you're looking for a hunting property, a private retreat, or a future home site, this versatile tract is one you'll want to see.



**KRISTY
INGOLD**
REALTOR®

Office: 601.898.2772

Cell: 662.792.9949

Kristy@TomSmithLand.com



Expect More. Get More.

A Real Estate Expert You Can Trust

TomSmithLandandHomes.com

Information is believed to be accurate but not guaranteed





A Real Estate Expert *You Can Trust!*

KRISTY INGOLD
REALTOR®

O: 601.898.2772 C: 662.792.9949

Kristy@TomSmithLand.com

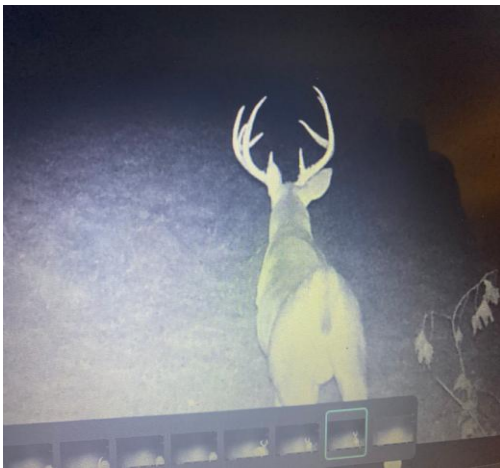
TomSmithLandandHomes.com



Expect More. Get More.



Information is believed to be accurate but not guaranteed.



A Real Estate Expert You Can Trust!

KRISTY INGOLD
REALTOR®

O: 601.898.2772 C: 662.792.9949

Kristy@TomSmithLand.com

TomSmithLandandHomes.com



Expect More. Get More.



Information is believed to be accurate but not guaranteed.



A Real Estate Expert *You Can Trust!*

KRISTY INGOLD
REALTOR®

O: 601.898.2772 C: 662.792.9949

Kristy@TomSmithLand.com

TomSmithLandandHomes.com

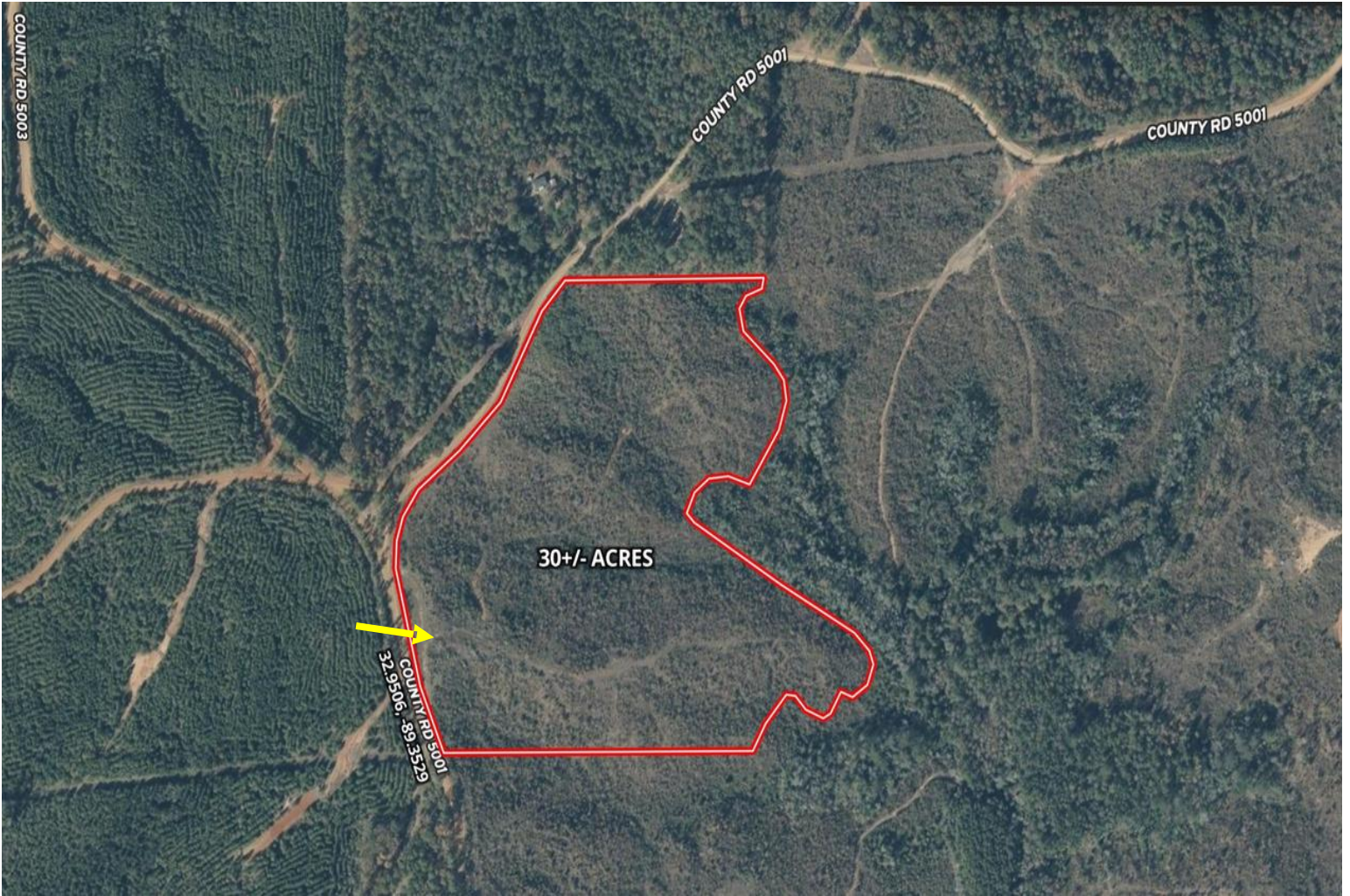


Expect More. Get More.



Information is believed to be accurate but not guaranteed.

AERIAL MAP



[Click Here for the Interactive Map Link](#)

A Real Estate Expert
You Can Trust!

KRISTY INGOLD
REALTOR®

O: 601.898.2772 C: 662.792.9949

Kristy@TomSmithLand.com

TomSmithLandandHomes.com

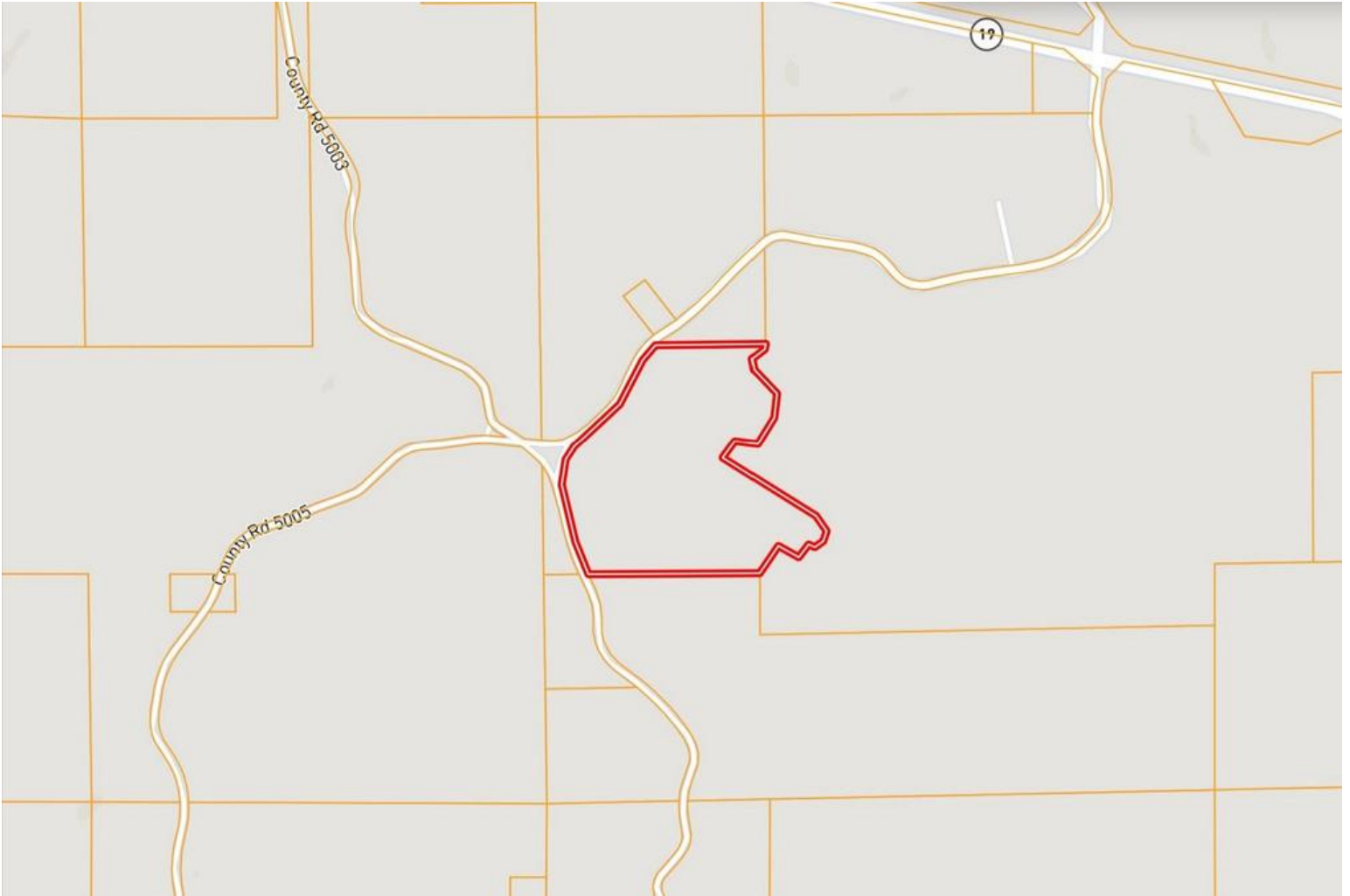


Expect More. Get More.



Information is believed to be accurate but not guaranteed.

OWNERSHIP MAP



A Real Estate Expert
You Can Trust!

KRISTY INGOLD
REALTOR®

O: 601.898.2772 C: 662.792.9949

Kristy@TomSmithLand.com

TomSmithLandandHomes.com

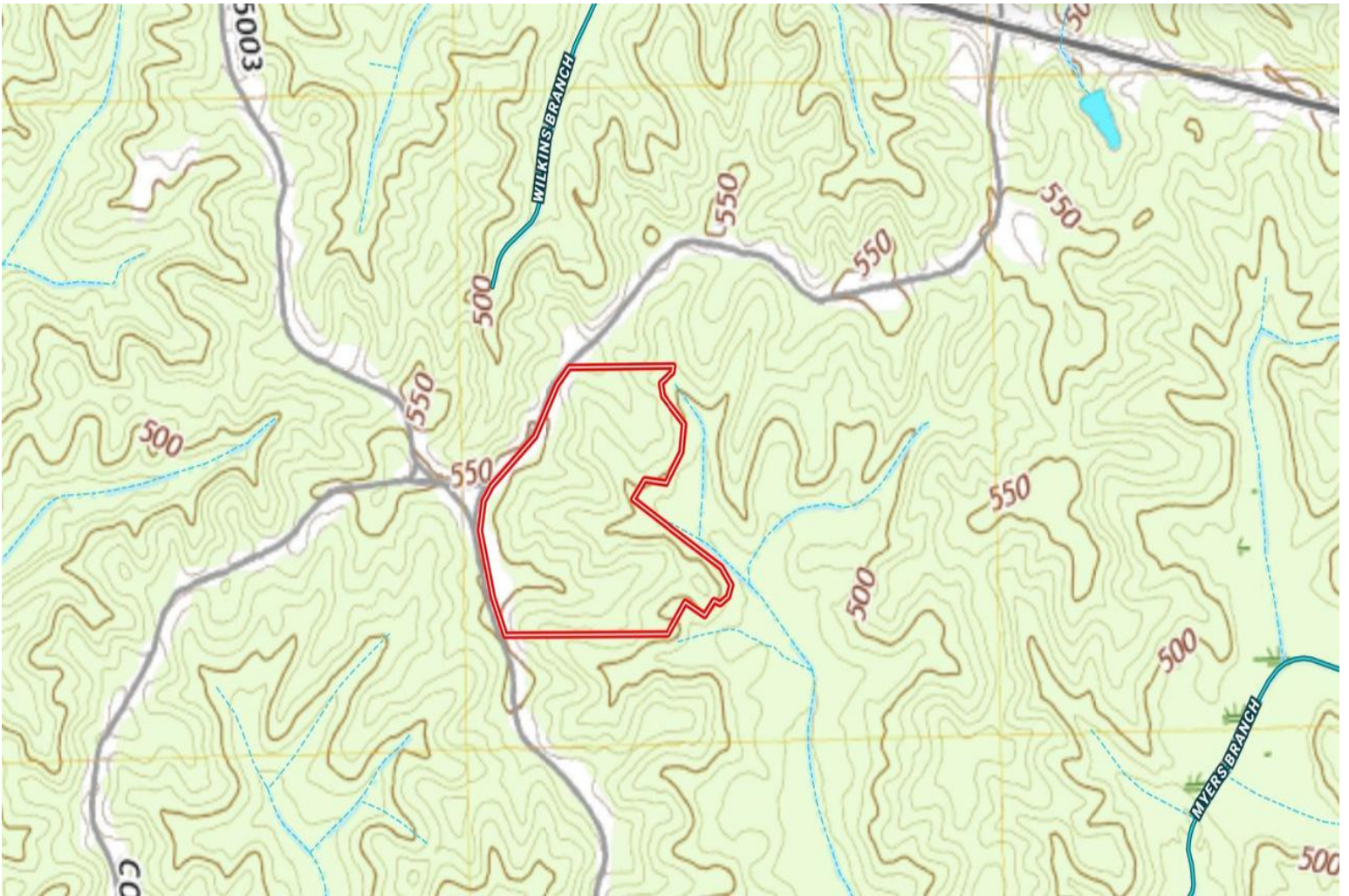


Expect More. Get More.



Information is believed to be accurate but not guaranteed.

TOPOGRAPHY MAP



A Real Estate Expert
You Can Trust!

KRISTY INGOLD
REALTOR®

O: 601.898.2772 C: 662.792.9949

Kristy@TomSmithLand.com

TomSmithLandandHomes.com

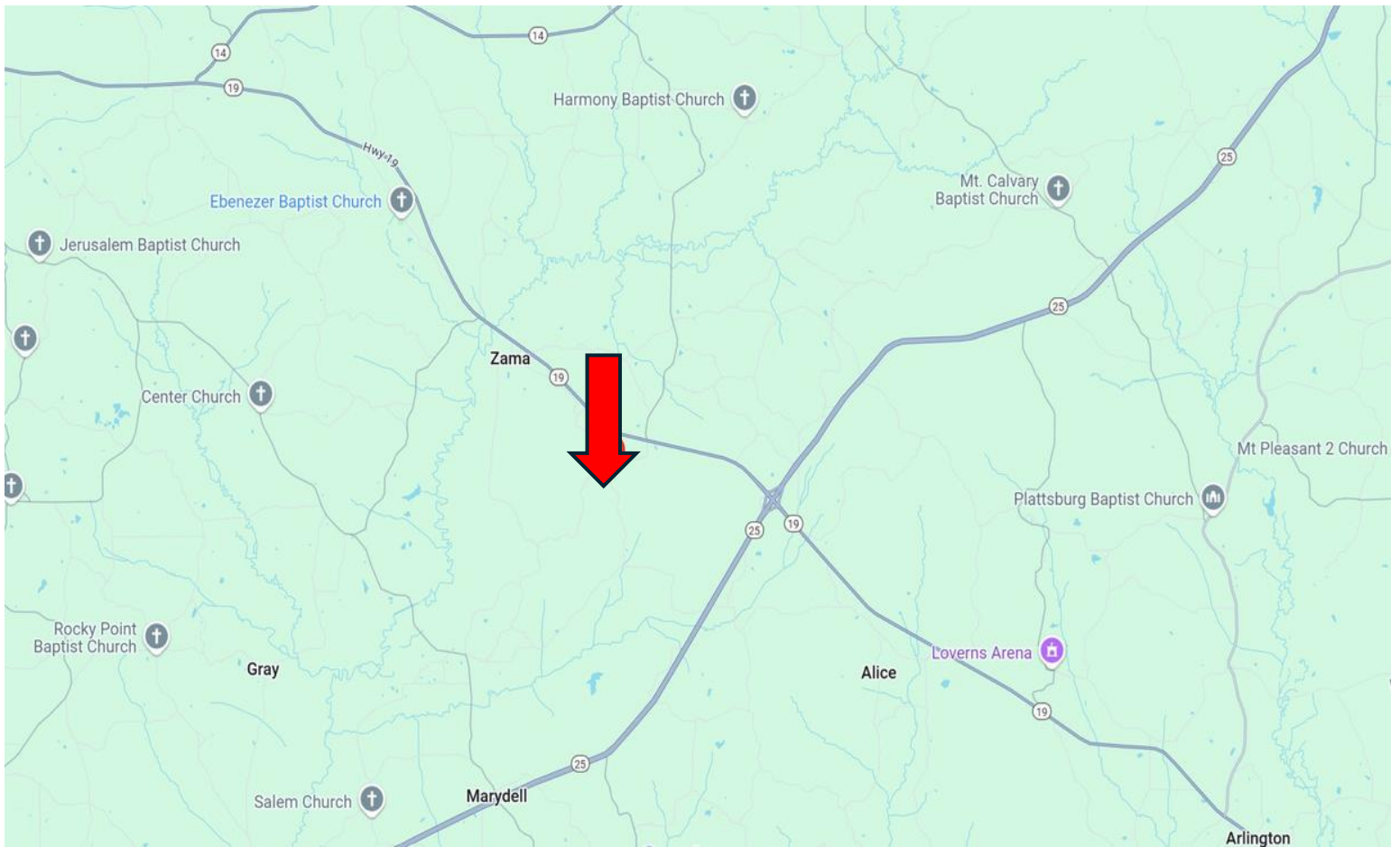


Expect More. Get More.



Information is believed to be accurate but not guaranteed.

DIRECTIONAL MAP



Directions from the intersection of Hwy 25 and Hwy 19 in Carthage, MS: Take exit MS-19 towards Kosciusko/Philadelphia. Turn onto Hwy 19 and travel 2.4 miles. Turn left onto CR 5001 and travel 1 mile. Make a slight left onto Ridge Road. The property will be on your left. [GOOGLE MAP LINK](#)



**KRISTY
INGOLD**
REALTOR®

Office: 601.898.2772
Cell: 662.792.9949
Kristy@TomSmithLand.com



Expect More. Get More.

A Real Estate Expert You Can Trust

TomSmithLandandHomes.com

Information is believed to be accurate but not guaranteed.

