

3-Bedroom, 3-Bathroom Lake House on Eagle Lake in Warren County, MS 2340 Eagle Shore Road, Vicksburg, MS 39183 | \$275,000



Check out this stunning lakefront retreat with 1,820± SF Living Space & 3,420± Total SF

This property is designed perfectly for outdoor enjoyment. You are greeted with a front porch and 2-car garage with an electric opener, which is great for storing your boat! The back of the home features peaceful lakefront views from the screened-in porch and wooden deck. The wooden deck is a great space to enjoy the sun and grill. The property is equipped with a mosquito misting system. Inside, you will find an open-concept living area. The gourmet kitchen features granite countertops, stainless steel appliances, and a breakfast bar. In the living room, there are 9' ceilings and a gas fireplace. There is tile and laminate wood flooring throughout the home. Each of the 3 bedrooms features a private bathroom and a walk-in closet. The spacious laundry room is perfect for storing cleaning supplies and beach towels! This property is turnkey as all appliances and furniture will remain. Whether you are looking for a permanent residence or a weekend getaway, this is an excellent opportunity! Don't wait- call Charlie Heinsz or Bruce West to schedule your private showing today!



CHARLIE HEINSZ
REALTOR®

O: 662.441.2500 | C: 662.719.7218
Charlie@TomSmithLand.com



Expect More. Get More.



BRUCE WEST
REALTOR®

O: 662.441.2500 | C: 662.873.3007
Bruce@TomSmithLand.com

TomSmithLandandHomes.com

Information is believed to be accurate but not guaranteed.





CHARLIE HEINSZ
REALTOR®

O: 662.441.2500 | C: 662.719.7218
Charlie@TomSmithLand.com



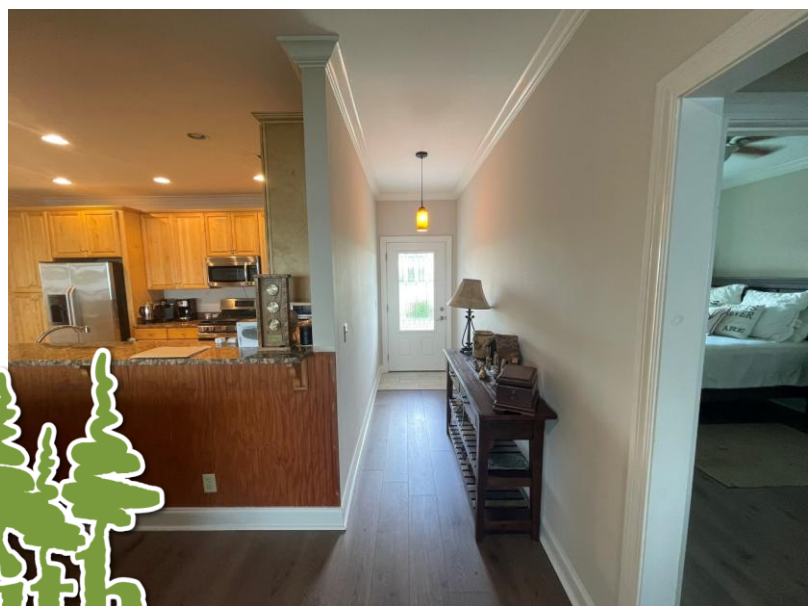
BRUCE WEST
REALTOR®

O: 662.441.2500 | C: 662.873.3007
Bruce@TomSmithLand.com

TomSmithLandandHomes.com

Information is believed to be accurate but not guaranteed.





CHARLIE HEINSZ
REALTOR®

O: 662.441.2500 | C: 662.719.7218
Charlie@TomSmithLand.com



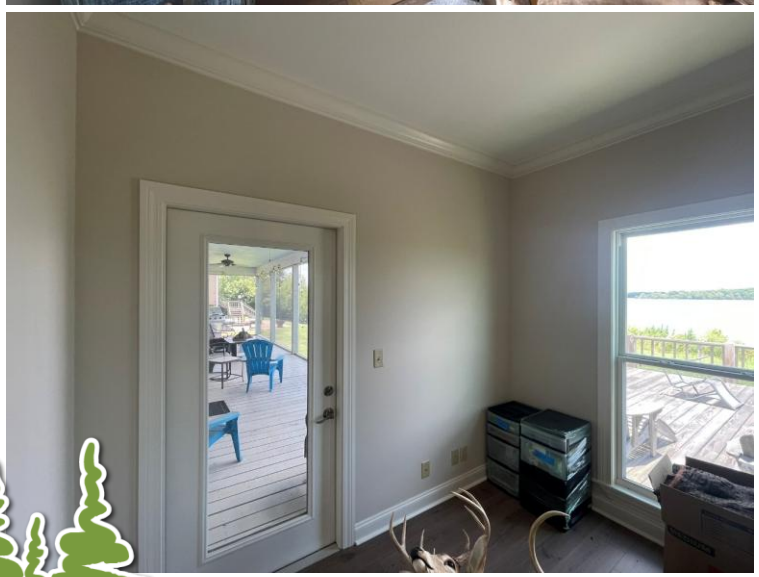
BRUCE WEST
REALTOR®

O: 662.441.2500 | C: 662.873.3007
Bruce@TomSmithLand.com

TomSmithLandandHomes.com

Information is believed to be accurate but not guaranteed.





CHARLIE HEINSZ
REALTOR®

O: 662.441.2500 | C: 662.719.7218
Charlie@TomSmithLand.com

BRUCE WEST
REALTOR®

O: 662.441.2500 | C: 662.873.3007
Bruce@TomSmithLand.com

TomSmithLandandHomes.com

Information is believed to be accurate but not guaranteed.





CHARLIE HEINSZ
REALTOR®

O: 662.441.2500 | C: 662.719.7218
Charlie@TomSmithLand.com

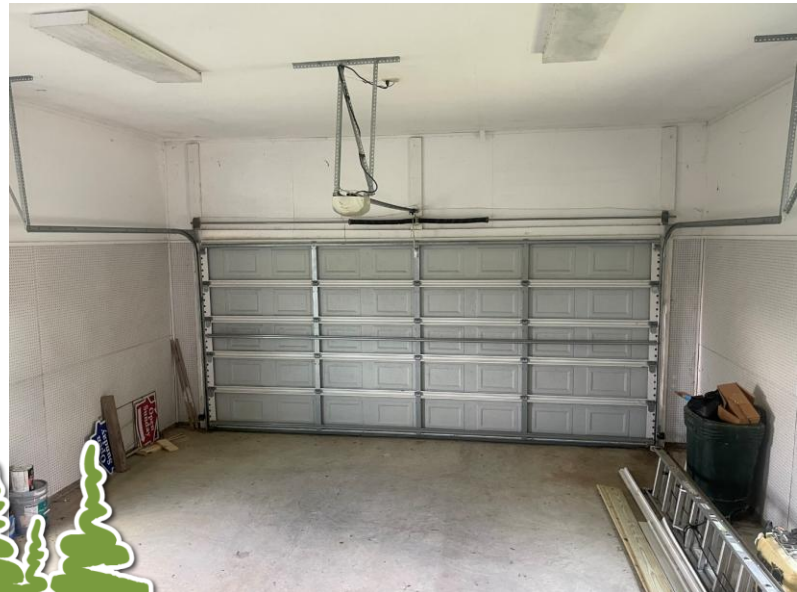
BRUCE WEST
REALTOR®

O: 662.441.2500 | C: 662.873.3007
Bruce@TomSmithLand.com

TomSmithLandandHomes.com

Information is believed to be accurate but not guaranteed.





CHARLIE HEINSZ
REALTOR®

O: 662.441.2500 | C: 662.719.7218
Charlie@TomSmithLand.com

BRUCE WEST
REALTOR®

O: 662.441.2500 | C: 662.873.3007
Bruce@TomSmithLand.com

TomSmithLandandHomes.com

Information is believed to be accurate but not guaranteed.





CHARLIE HEINSZ
REALTOR®

O: 662.441.2500 | C: 662.719.7218
Charlie@TomSmithLand.com

BRUCE WEST
REALTOR®

O: 662.441.2500 | C: 662.873.3007
Bruce@TomSmithLand.com

TomSmithLandandHomes.com

Information is believed to be accurate but not guaranteed



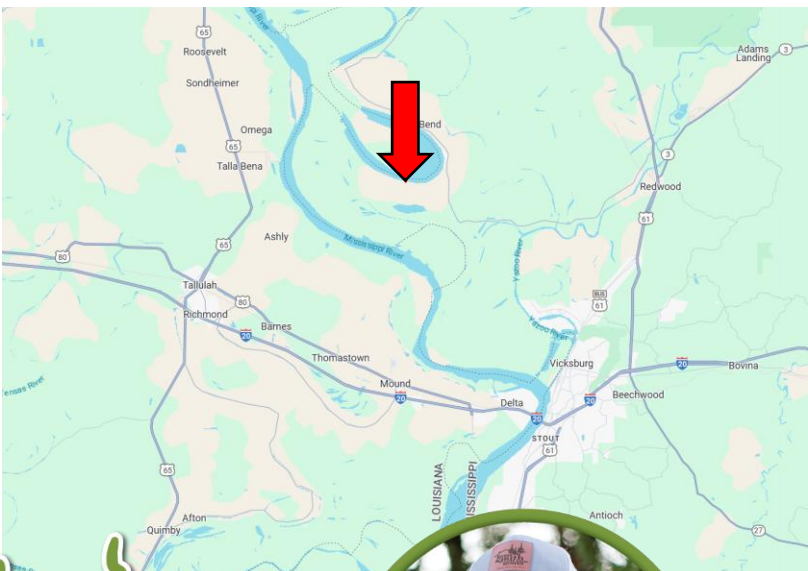
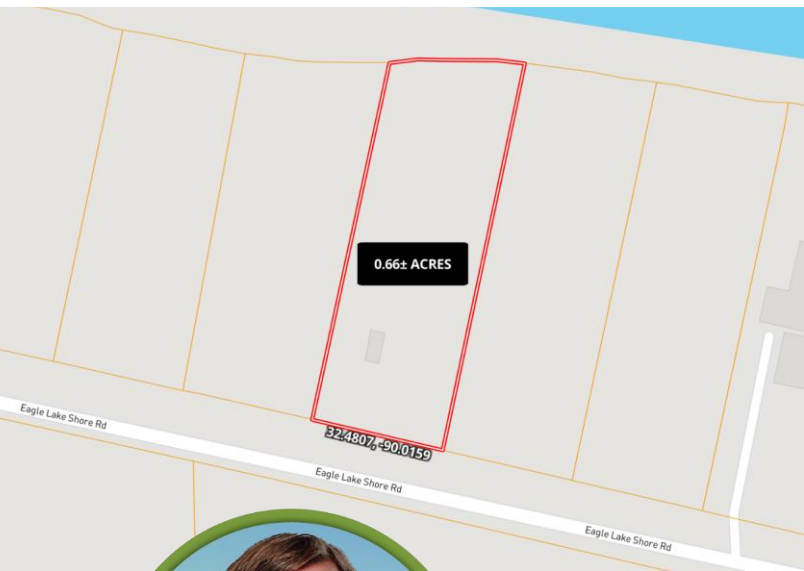
[Click for Interactive Map](#)



Address: 2340 Eagle Lake Shore Road, Vicksburg, MS 39183

[Click for Google Maps](#)

Directions from the Intersection of I-20 and HWY 61 in Vicksburg, MS: Travel north on HWY 61 for 10.6 before turning left onto HWY 465. Travel for 13.7 miles, then turn left onto Eagle Lake Shore Road. The home will be on the right in 2.3 miles.

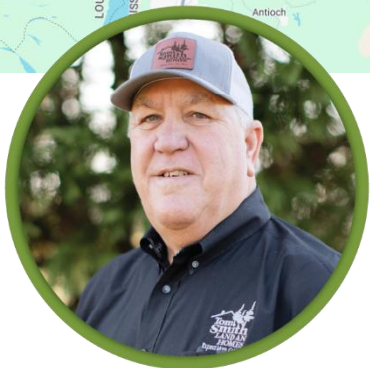


CHARLIE HEINSZ
REALTOR®

O: 662.441.2500 | C: 662.719.7218
Charlie@TomSmithLand.com



Expect More. Get More.



BRUCE WEST
REALTOR®

O: 662.441.2500 | C: 662.873.3007
Bruce@TomSmithLand.com

TomSmithLandandHomes.com

Information is believed to be accurate but not guaranteed.

