

BUILD | HUNT | INVEST

19.5± Acres in Grenada County, MS

\$175,000

Looking for the perfect spot to build your dream home, weekend getaway, or to invest?

This 19.5± acre property has you covered. With multiple hilltop homesites offering great views, you'll have plenty of options to make it your own. Located less than a mile from a public boat landing, it's ideal for outdoor enthusiasts. Enjoy excellent recreational opportunities—turkey sightings are common, and multiple 140-150 class deer have been harvested here in recent years. Don't miss out—call Leland Selby today to schedule your private showing!



**LELAND
SELBY**

REALTOR®

Office: 662.268.6333

Cell: 662.394.9876

Leland@TomSmithLand.com



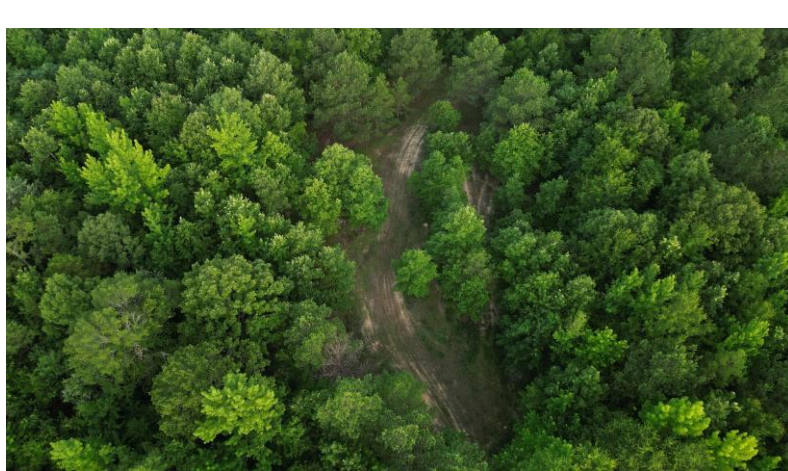
Expect More. Get More.

A Real Estate Expert You Can Trust

TomSmithLandandHomes.com

Information is believed to be accurate but not guaranteed.





A Real Estate Expert *You Can Trust!*

LELAND SELBY
REALTOR®

O: 662.268.6333 C: 662.394.9876

Leland@TomSmithLand.com

TomSmithLandandHomes.com



Expect More. Get More.



Information is believed to be accurate but not guaranteed.

Trophy Room



A Real Estate Expert
You Can Trust!

LELAND SELBY
REALTOR®

O: 662.268.6333 C: 662.394.9876

Leland@TomSmithLand.com

TomSmithLandandHomes.com

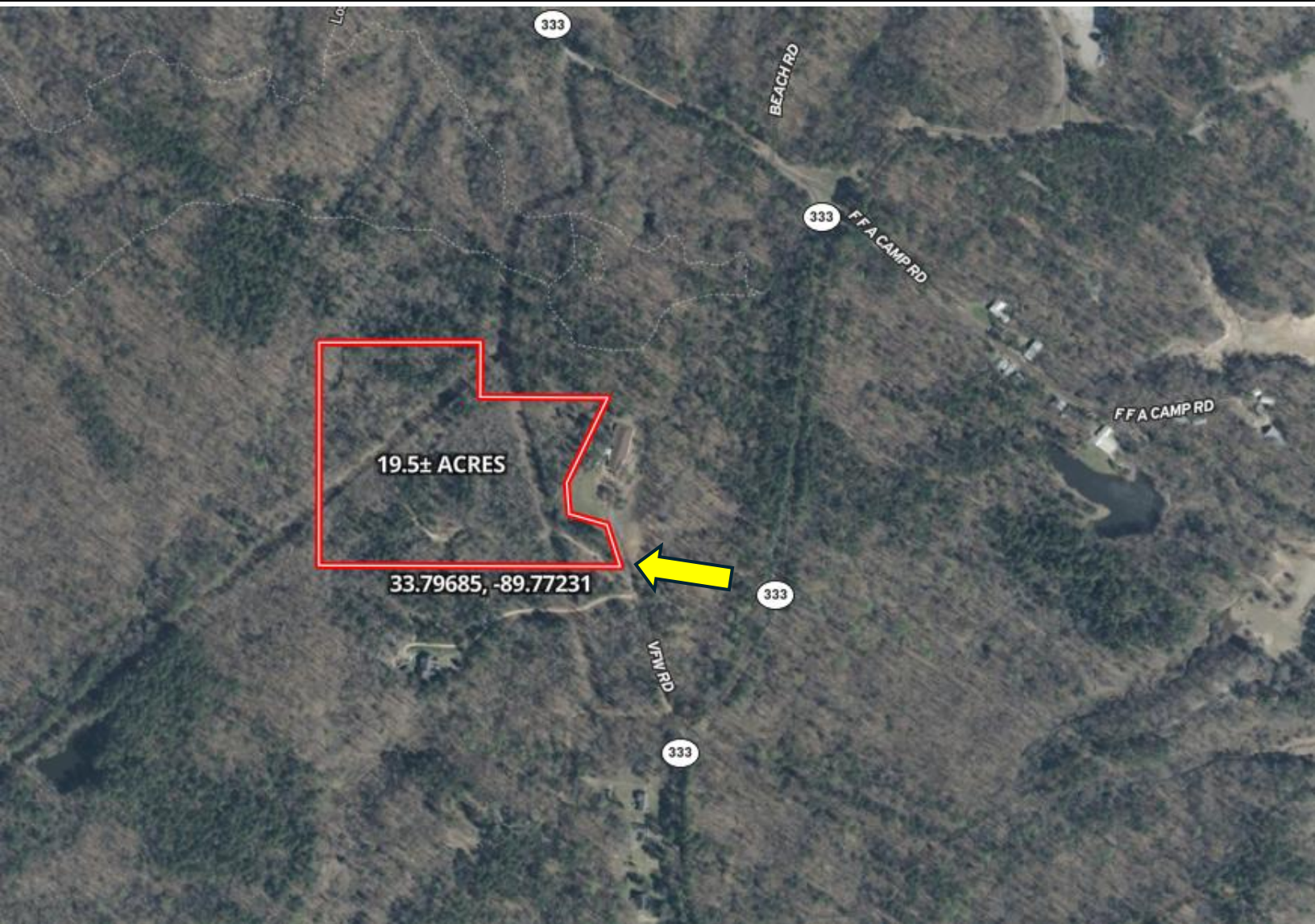
**Tom
Smith**
LAND AND
HOMES

Expect More. Get More.

Information is believed to be accurate but not guaranteed.

LandReport
2011-2024
NATIONAL
BEST
BROKERAGES

Aerial Map



[Click Here for
Interactive Map](#)

A Real Estate Expert
You Can Trust!

LELAND SELBY
REALTOR®

O: 662.268.6333 C: 662.394.9876

Leland@TomSmithLand.com

TomSmithLandandHomes.com

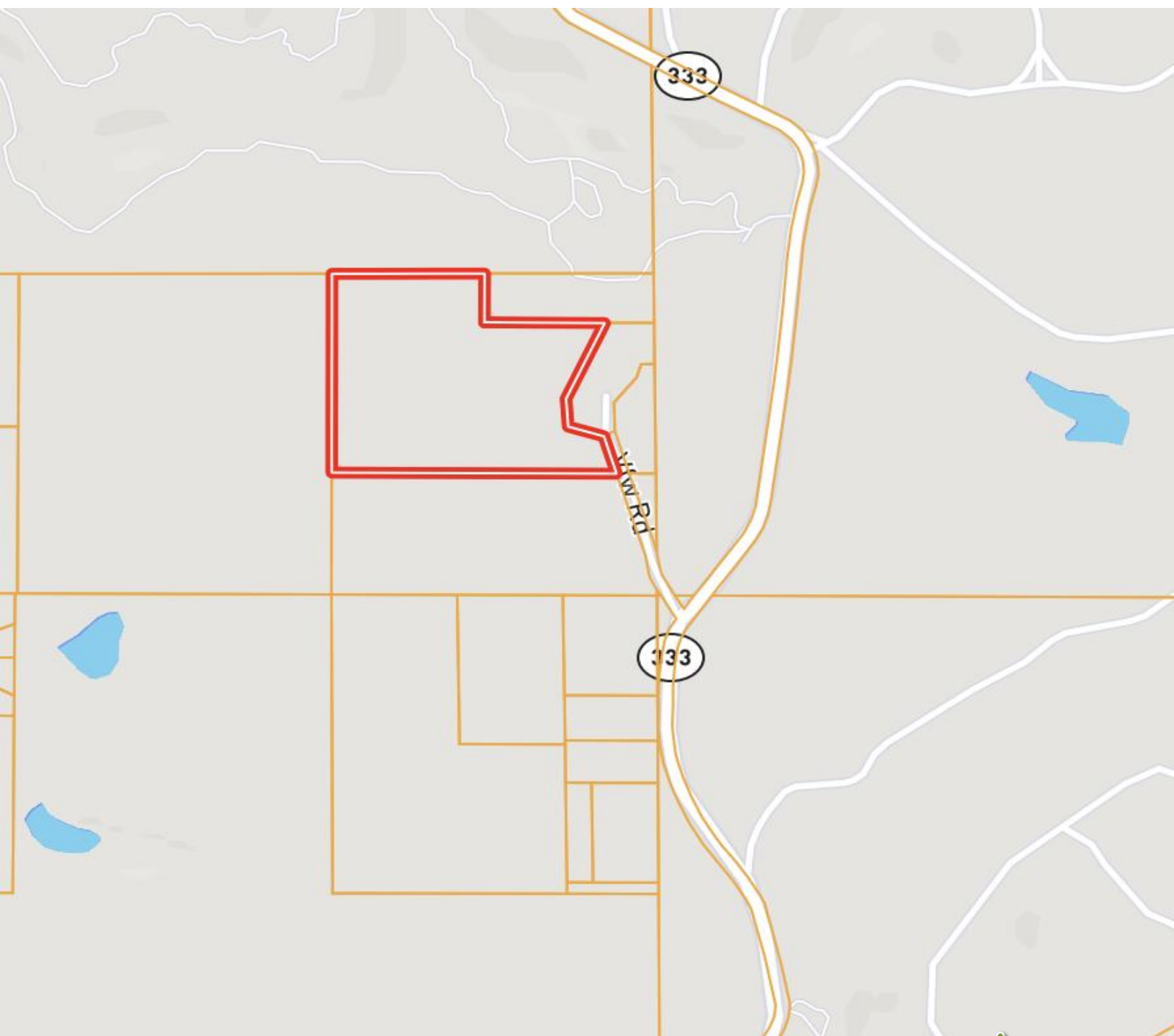


Expect More. Get More.

Information is believed to be accurate but not guaranteed.



Ownership Map



A Real Estate Expert
You Can Trust!

LELAND SELBY
REALTOR®

O: 662.268.6333 C: 662.394.9876

Leland@TomSmithLand.com

TomSmithLandandHomes.com

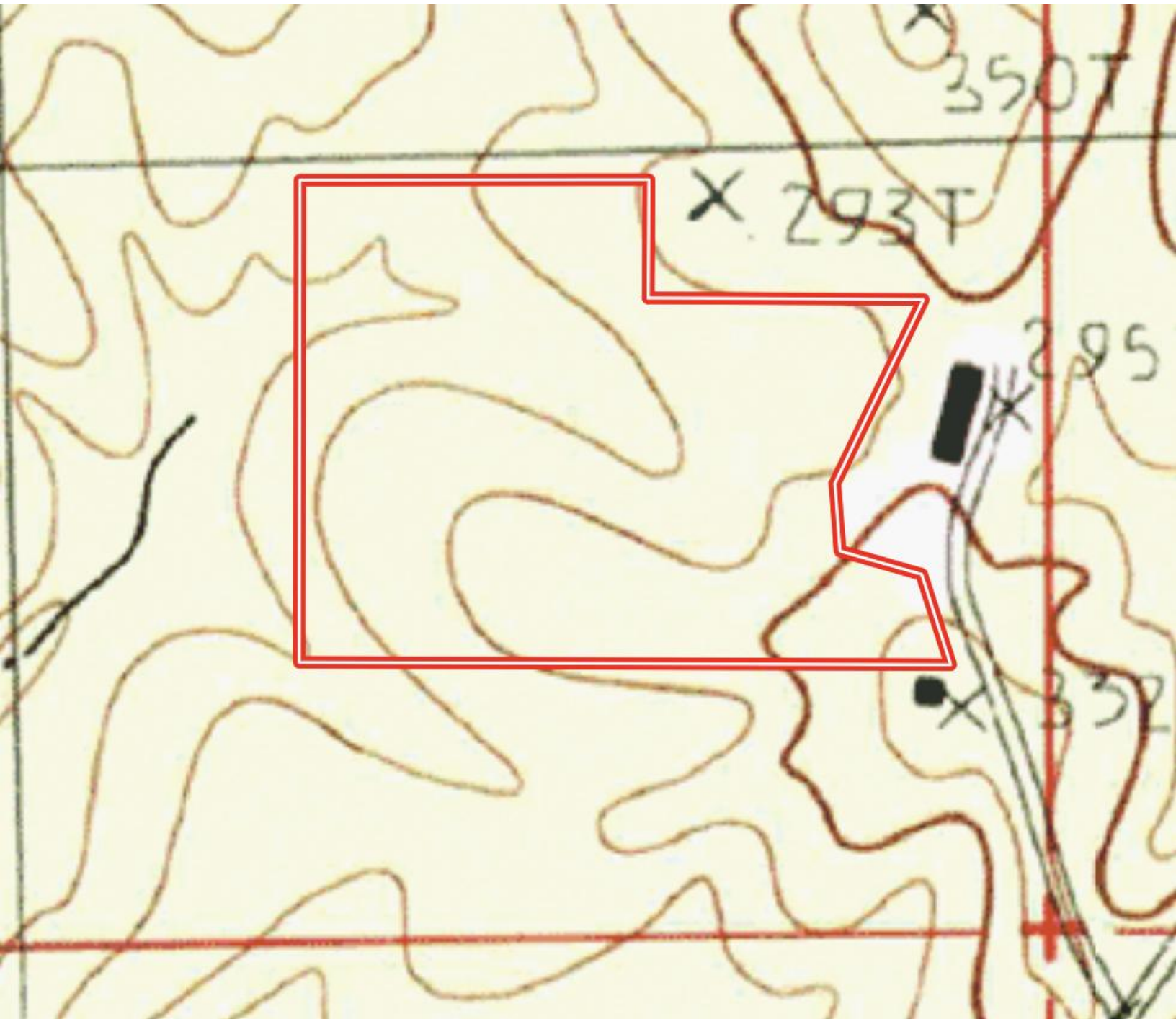


Expect More. Get More.

Information is believed to be accurate but not guaranteed.



Topography Map



A Real Estate Expert
You Can Trust!

LELAND SELBY
REALTOR®

O: 662.268.6333 C: 662.394.9876

Leland@TomSmithLand.com

TomSmithLandandHomes.com

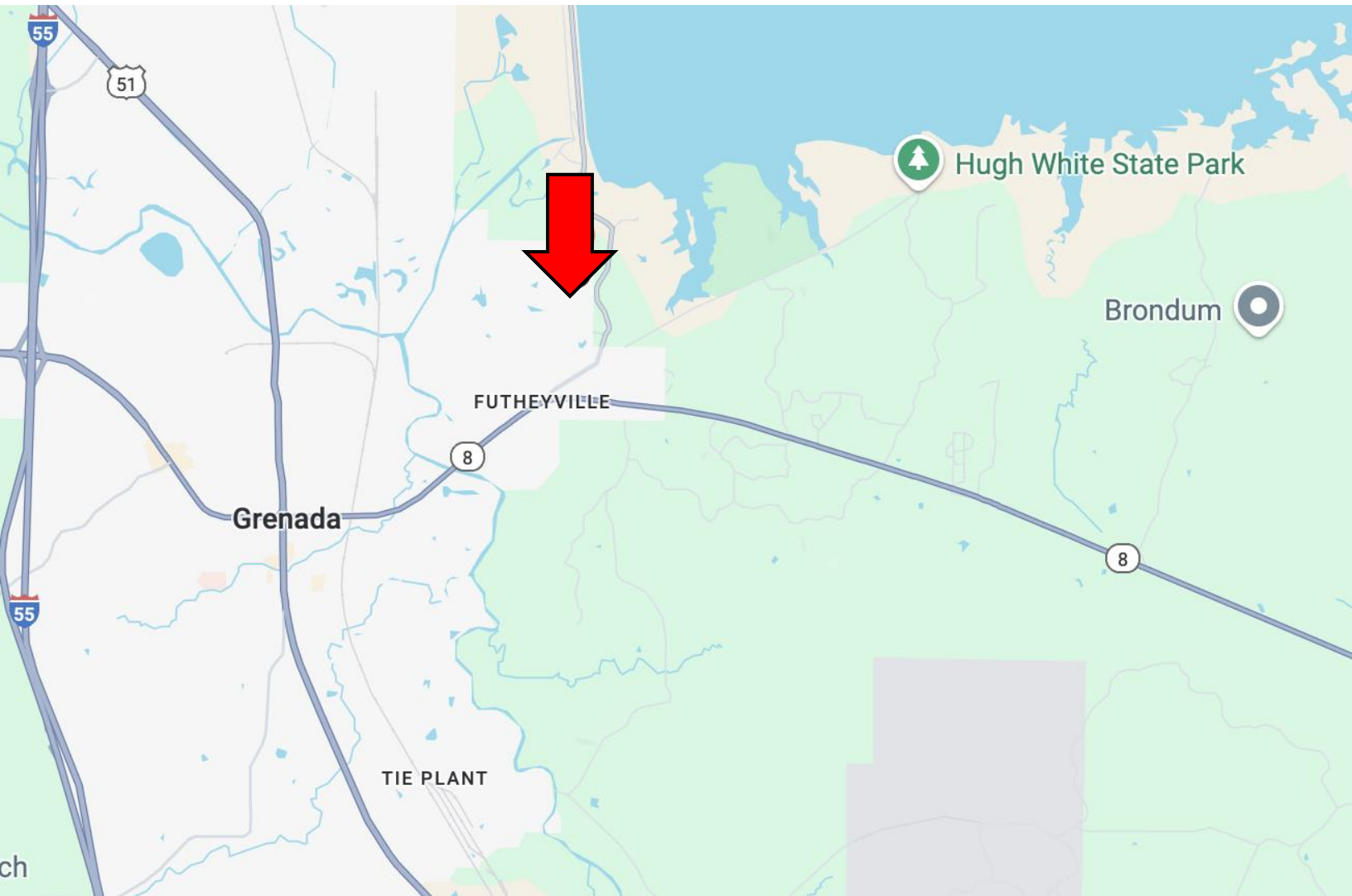


Expect More. Get More.

Information is believed to be accurate but not guaranteed.



Directional Map



Directions from Highway 8 in Grenada: Head northeast on Lakeview Dr and in .5 miles turn left on onto MS-333/Mississippi 333 Scenic Loop. In 1.1 miles Turn left onto VFW Rd, follow for .2 miles the property will be on your left.

[Google Map Link](#)



**LELAND
SELBY**

REALTOR®

Office: 662.268.6333

Cell: 662.394.9876

Leland@TomSmithLand.com



Expect More. Get More.

A Real Estate Expert You Can Trust

TomSmithLandandHomes.com

Information is believed to be accurate but not guaranteed.

