

8± Acres of Homesite Potential Winston County, MS



\$35,500

This beautiful 8 ± acre tract offers the perfect setting for your future homesite in Winston County. With water and power available to the property. Enjoy the quiet of the country while still being conveniently located approximately 6 miles from Highway 15 and Highway 25 intersection. Whether you're looking to build now or invest for the future, this spacious lot provides room to grow and the freedom to create the lifestyle you want.



**DOYES
HOLLAND**
REALTOR®

Office: 662.268.6333

Cell: 662.312.2165

DHolland@TomSmithLand.com



Expect More. Get More.

A Real Estate Expert You Can Trust

TomSmithLandandHomes.com

Information is believed to be accurate but not guaranteed.





A Real Estate Expert
You Can Trust!

DOYES HOLLAND

REALTOR®

O: 662.268.6333 C: 662.312.2165

DHolland@TomSmithLand.com

TomSmithLandandHomes.com



Expect More. Get More.



Information is believed to be accurate but not guaranteed.

Aerial Map



[Click Here for LandID Interactive Map](#)

A Real Estate Expert
You Can Trust!

DOYES HOLLAND
REALTOR®

O: 662.268.6333 C: 662.312.2165

DHolland@TomSmithLand.com

TomSmithLandandHomes.com

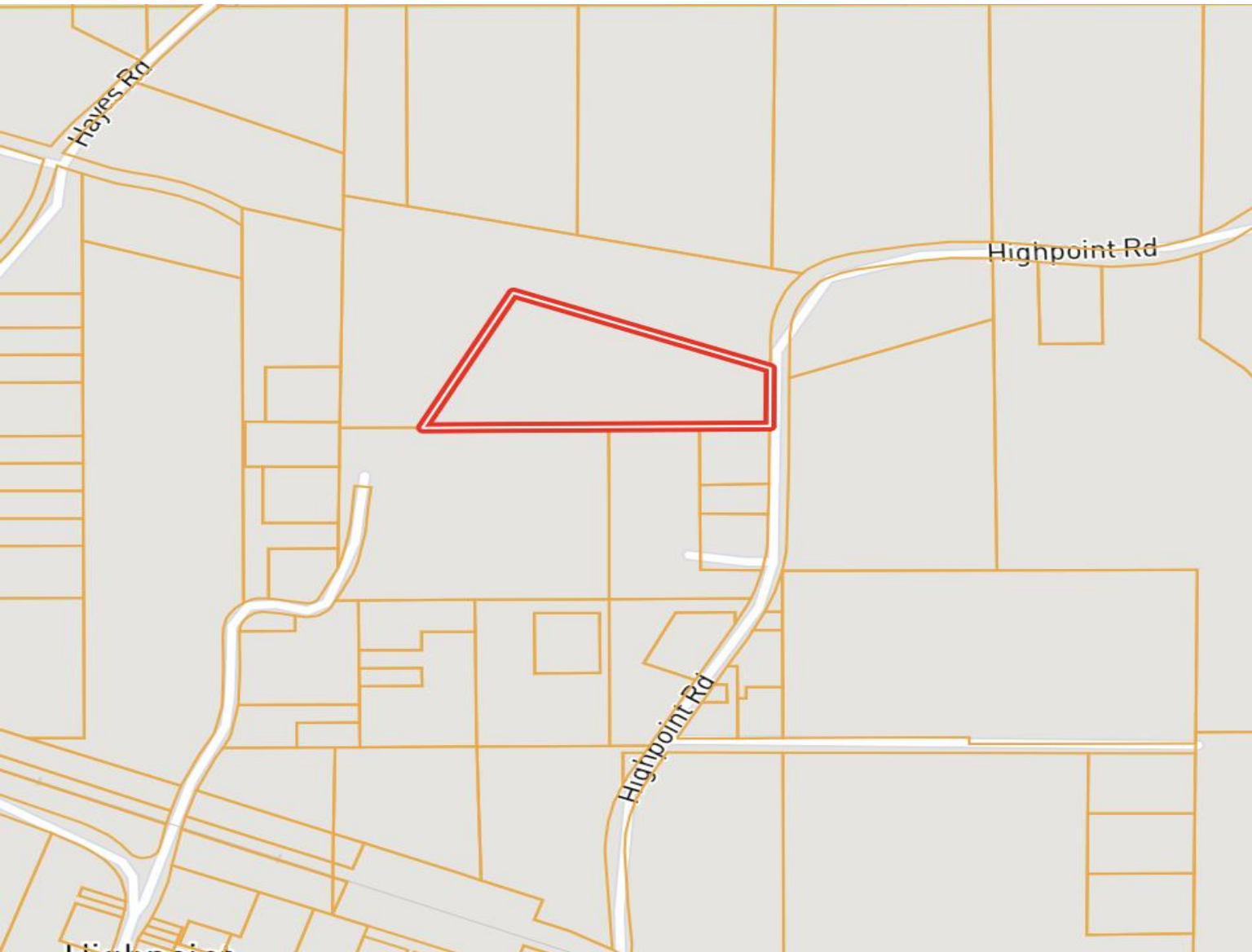


Expect More. Get More.



Information is believed to be accurate but not guaranteed.

Ownership Map



A Real Estate Expert
You Can Trust!

DOYES HOLLAND
REALTOR®

O: 662.268.6333 C: 662.312.2165

DHolland@TomSmithLand.com

TomSmithLandandHomes.com

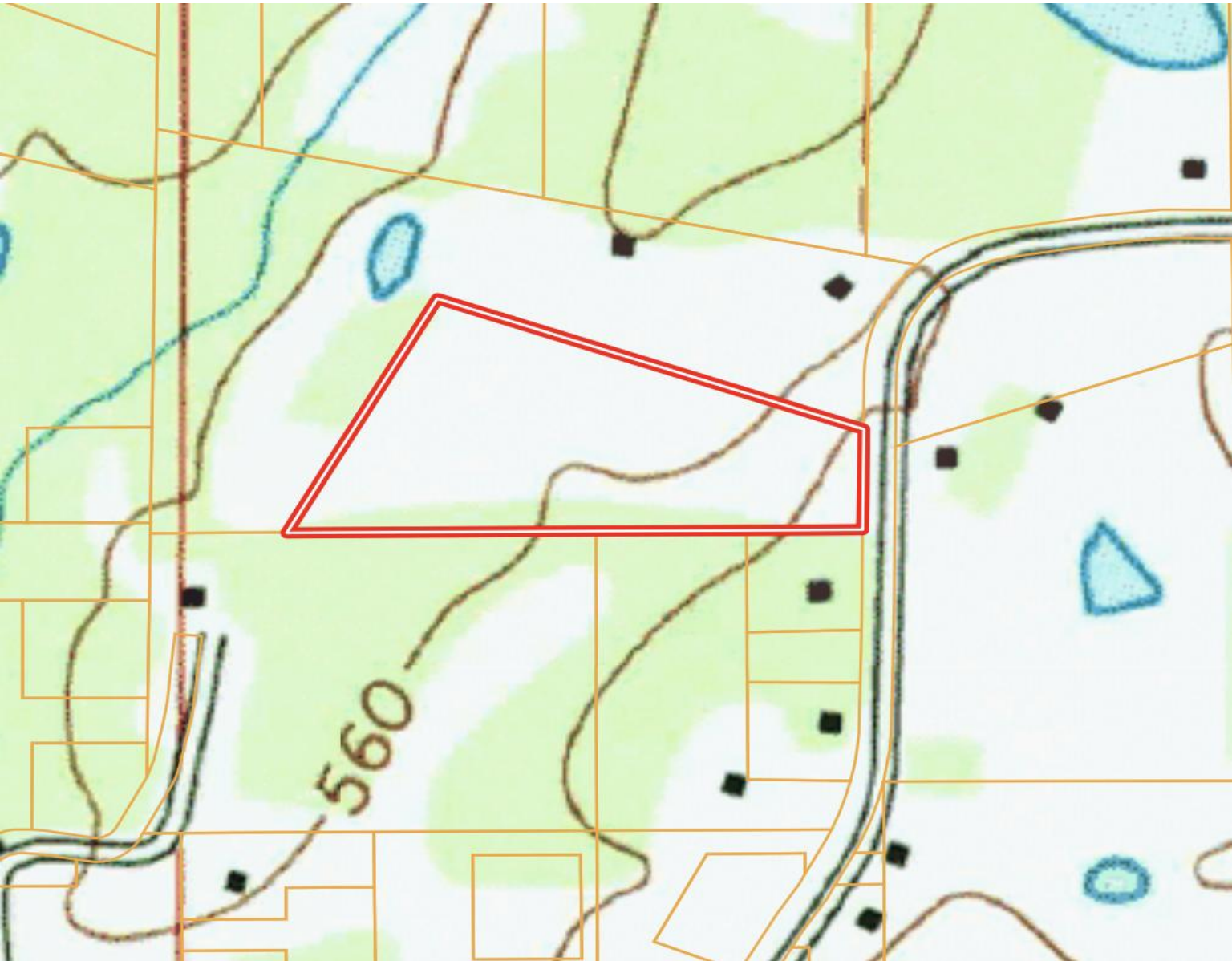


Expect More. Get More.



Information is believed to be accurate but not guaranteed.

Topography Map



A Real Estate Expert
You Can Trust!

DOYES HOLLAND

REALTOR®

O: 662.268.6333 C: 662.312.2165

DHolland@TomSmithLand.com

TomSmithLandandHomes.com

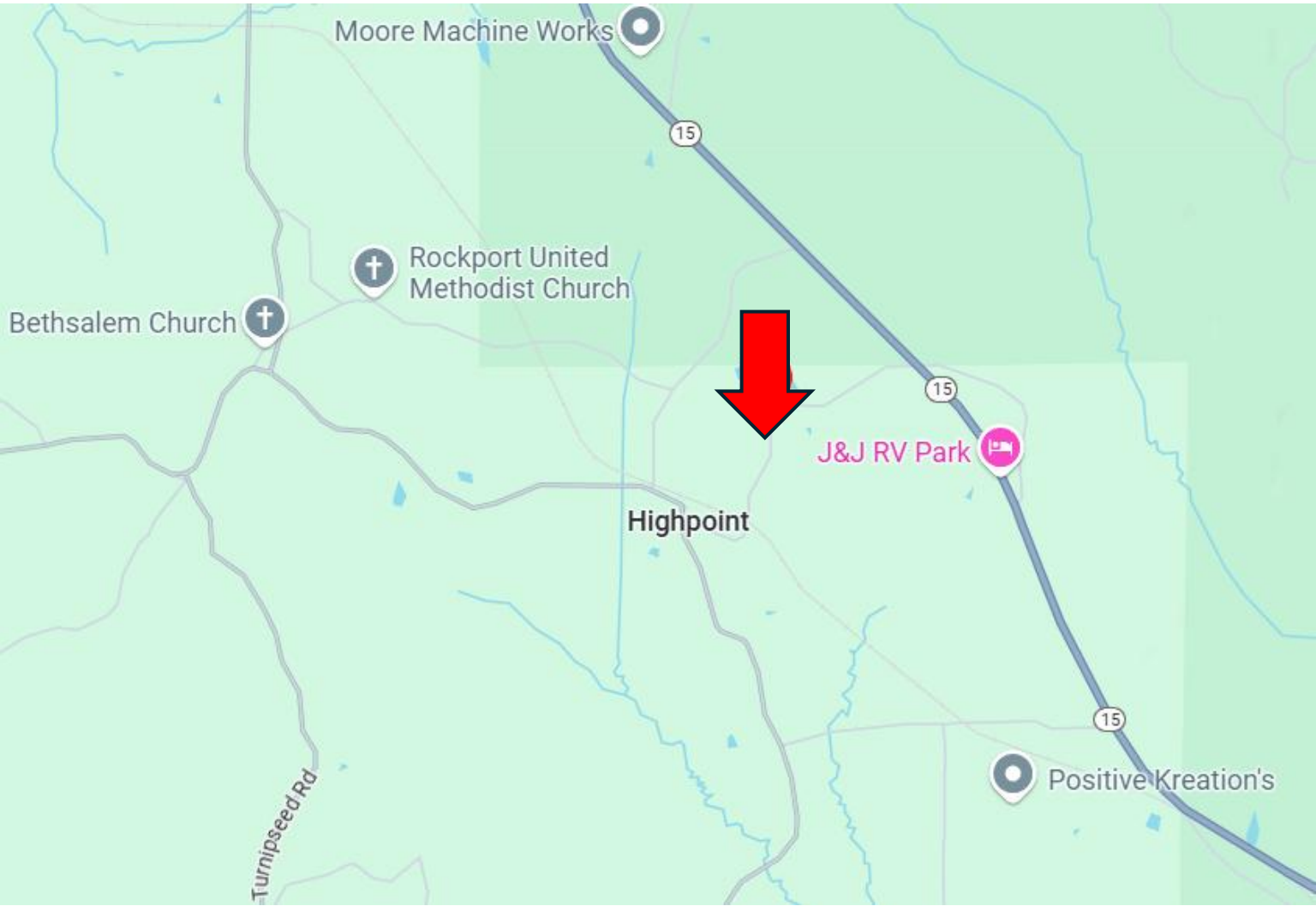


Expect More. Get More.

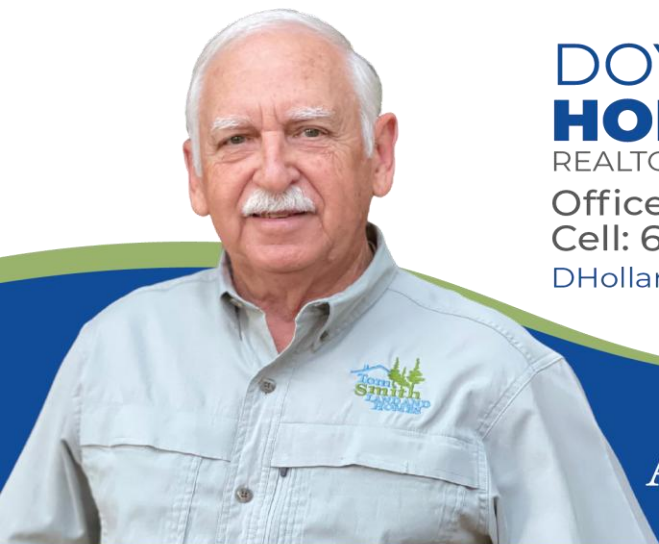


Information is believed to be accurate but not guaranteed.

Directional Map



Directions from the Intersection of Hwy 14 and Highway 25 in Louisville, MS: Travel north on Hwy 15N for approximately 6 miles. Turn left on Highpoint Road. After 1 mile, the property will be on your right. [Google Map Link](#)



**DOYES
HOLLAND**
REALTOR®

Office: 662.268.6333
Cell: 662.312.2165
DHolland@TomSmithLand.com



Expect More. Get More.

A Real Estate Expert You Can Trust

TomSmithLandandHomes.com

Information is believed to be accurate but not guaranteed.

