

# *Homesite on 7± acres in Tallahatchie County*

29757 Highway 32, Charleston, MS 38921  
40x80 Shop | \$135,000



Discover a fantastic opportunity with this 7± acre homesite for sale at 29757 Highway 32, Charleston, MS 38921. This expansive property offers ample space for building your dream home. Included with the land is a substantial 40x80 shop, perfect for storage, a workshop, or pursuing your hobbies. The property also features a great circle driveway, your very own tennis court, and enough land for hunting in your backyard. Located in Tallahatchie County, whether you're looking to create a serene retreat or seek a place with plenty of space for work and play, this property has something to offer everyone. Don't miss your chance to explore the possibilities that await on this fantastic plot of land! Contact Anthony Steen today for more information and to schedule a viewing!



**ANTHONY  
STEEN**

REALTOR®

Office: 601.898.2772

Cell: 662.645.5151

Anthony@TomSmithLand.com



Expect More. Get More.

**A Real Estate Expert You Can Trust**

TomSmithLandandHomes.com

Information is believed to be accurate but not guaranteed.







## A Real Estate Expert *You Can Trust!*

**ANTHONY STEEN**  
REALTOR®

O: 601.898.2772 C: 662.645.5151

Anthony@TomSmithLand.com

TomSmithLandandHomes.com



Expect More. Get More.







**A Real Estate Expert**  
*You Can Trust!*

**ANTHONY STEEN**

REALTOR®

O: 601.898.2772 C: 662.645.5151

Anthony@TomSmithLand.com

TomSmithLandandHomes.com

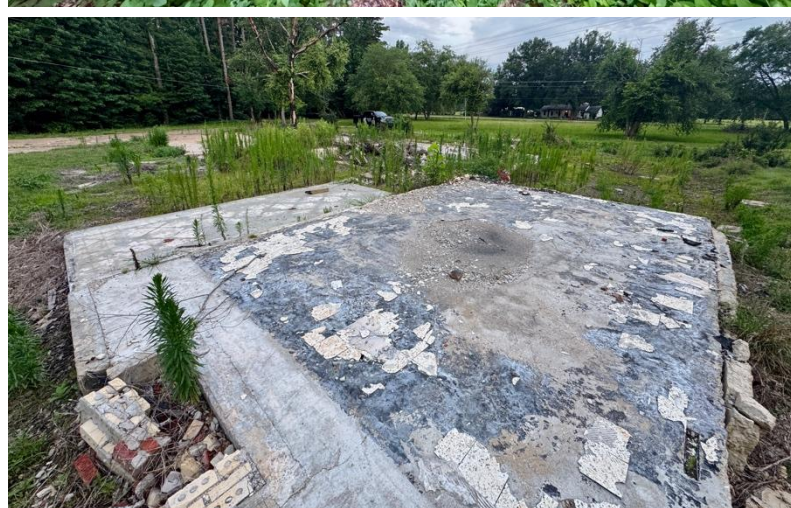


Expect More. Get More.



Information is believed to be accurate but not guaranteed.





**A Real Estate Expert**  
*You Can Trust!*

**ANTHONY STEEN**

REALTOR®

O: 601.898.2772 C: 662.645.5151

Anthony@TomSmithLand.com

TomSmithLandandHomes.com



Expect More. Get More.



Information is believed to be accurate but not guaranteed.



# AERIAL MAP

[Click for the Interactive Map](#)



**A Real Estate Expert**  
*You Can Trust!*

**ANTHONY STEEN**  
REALTOR®

O: 601.898.2772 C: 662.645.5151

[Anthony@TomSmithLand.com](mailto:Anthony@TomSmithLand.com)

[TomSmithLandandHomes.com](http://TomSmithLandandHomes.com)



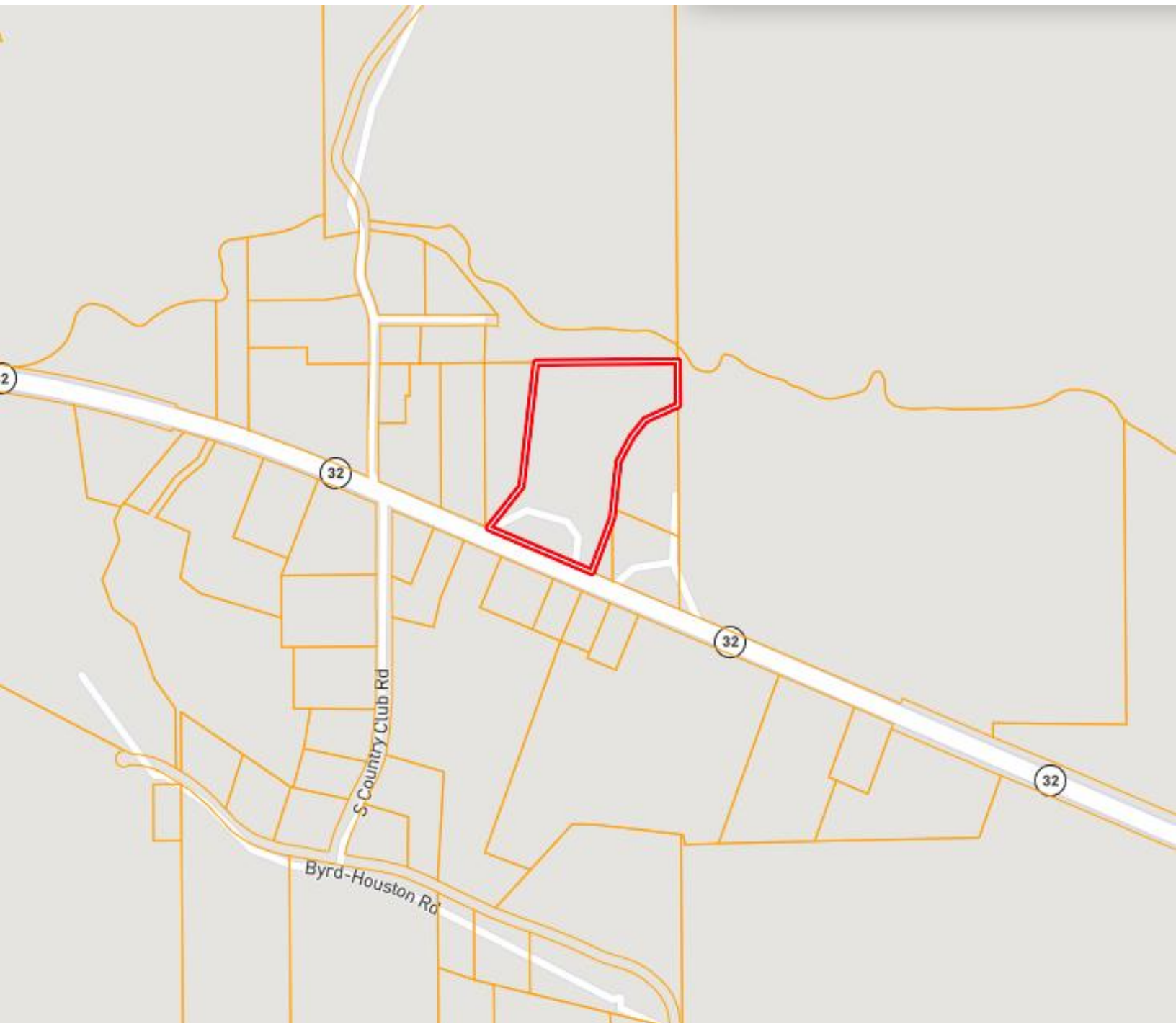
Expect More. Get More.



Information is believed to be accurate but not guaranteed.



# OWNERSHIP MAP



**A Real Estate Expert**  
*You Can Trust!*

**ANTHONY STEEN**

REALTOR®

O: 601.898.2772 C: 662.645.5151

[Anthony@TomSmithLand.com](mailto:Anthony@TomSmithLand.com)

[TomSmithLandandHomes.com](http://TomSmithLandandHomes.com)



Expect More. Get More.

Information is believed to be accurate but not guaranteed.



# TOPOGRAPHY MAP



**A Real Estate Expert**  
*You Can Trust!*

**ANTHONY STEEN**  
REALTOR®

O: 601.898.2772 C: 662.645.5151

Anthony@TomSmithLand.com

TomSmithLandandHomes.com



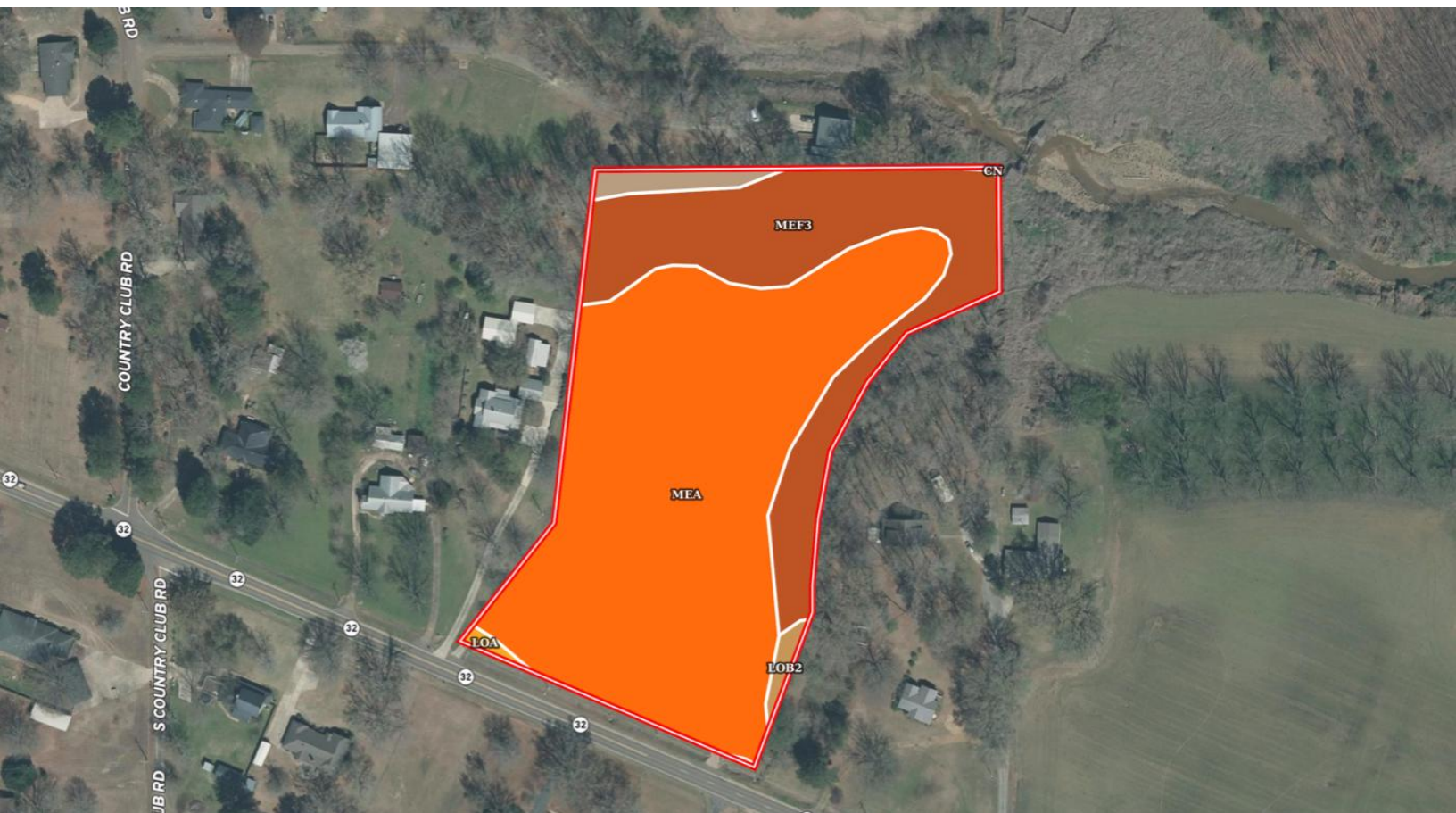
Expect More. Get More.

Information is believed to be accurate but not guaranteed.





# SOIL MAP



SOIL CODE	SOIL DESCRIPTION	ACRES	%	CPI	NCCPI	CAP
MeA	Memphis silt loam, 0 to 2 percent slopes	4.68	67.34	0	88	1
MeF3	Memphis silt loam, 17 to 40 percent slopes, severely eroded	2.02	29.06	0	18	7e
Cn	Collins silt loam	0.16	2.3	0	56	2w
LoB2	Loring silt loam, 2 to 5 percent slopes, moderately eroded, central	0.07	1.01	0	55	3e
LoA	Loring silt loam, 0 to 2 percent slopes, south	0.03	0.43	0	66	2w
TOTALS		6.96(* )	100%	-	66.62	2.79

(\*) Total acres may differ in the second decimal compared to the sum of each acreage soil. This is due to a round error because we only show the acres of each soil with two decimal.

**A Real Estate Expert**  
*You Can Trust!*

**ANTHONY STEEN**  
REALTOR®  
O: 601.898.2772 C: 662.645.5151  
Anthony@TomSmithLand.com  
TomSmithLandandHomes.com

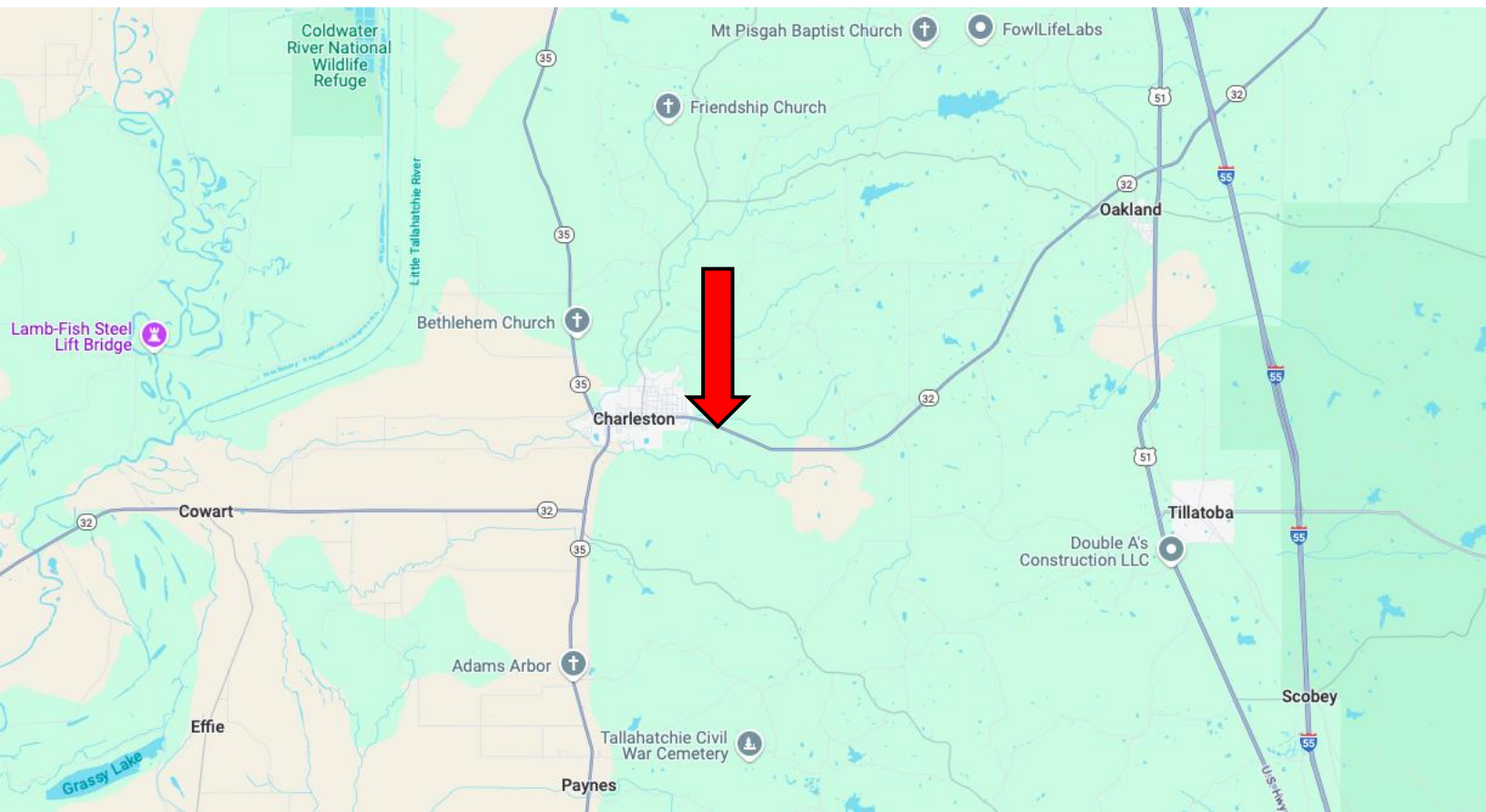
**Tom Smith**  
LAND AND  
HOMES  
Expect More. Get More.

LandReport  
2011-2024  
NATIONAL  
BEST  
BROKERAGES

Information is believed to be accurate but not guaranteed.



# DIRECTIONAL MAP



**Address:** 29757 Highway 32, Charleston, MS 38921

## Directions from MS-35 & Hwy 32, Charleston, MS:

Travel east on Hwy 32 E. After 1.8 miles, the destination will be on the left. [Google Maps Link](#)



**ANTHONY  
STEEN**

REALTOR®

Office: 601.898.2772

Cell: 662.645.5151

[Anthony@TomSmithLand.com](mailto:Anthony@TomSmithLand.com)



Expect More. Get More.

**A Real Estate Expert You Can Trust**

[TomSmithLandandHomes.com](http://TomSmithLandandHomes.com)

Information is believed to be accurate but not guaranteed.

