

RECREATIONAL TRACT

117.7± Acres in Franklin County, AL



\$360,000

Are you looking for a place to hunt or a timber investment? Look no further than this 117.7+/- acres in Franklin County, Alabama. This property consist of approximately 18 to 20-year-old pines with huge oaks and hardwoods in the valleys and on the ridges. This would be a great place to hunt because of the diversity and rolling topography. Whether you're looking for deer, turkey, or small game this property has it all. Hurricane Creek winds through the southern portion of this property just south of County Road 23 too. This property features over 1,700 feet of road frontage on County Road 23 and has utilities available at the road. Vina is just a few miles from this property, and it is also not far from the Mississippi State line. To schedule a private showing, call or text Walker Trantum today!



**WALKER
TRANUM**
REALTOR®

Office: 662.268.6333

Cell: 662.769.1442

Walker@TomSmithHomes.com



Expect More. Get More.

A Real Estate Expert You Can Trust

TomSmithLandandHomes.com

Information is believed to be accurate but not guaranteed.





**WALKER
TRANUM**
REALTOR®

Office: 662.268.6333

Cell: 662.769.1442

Walker@TomSmithHomes.com



Expect More. Get More.

A Real Estate Expert You Can Trust

TomSmithLandandHomes.com

Information is believed to be accurate but not guaranteed.





**WALKER
TRANUM**
REALTOR®

Office: 662.268.6333

Cell: 662.769.1442

Walker@TomSmithHomes.com



Expect More. Get More.

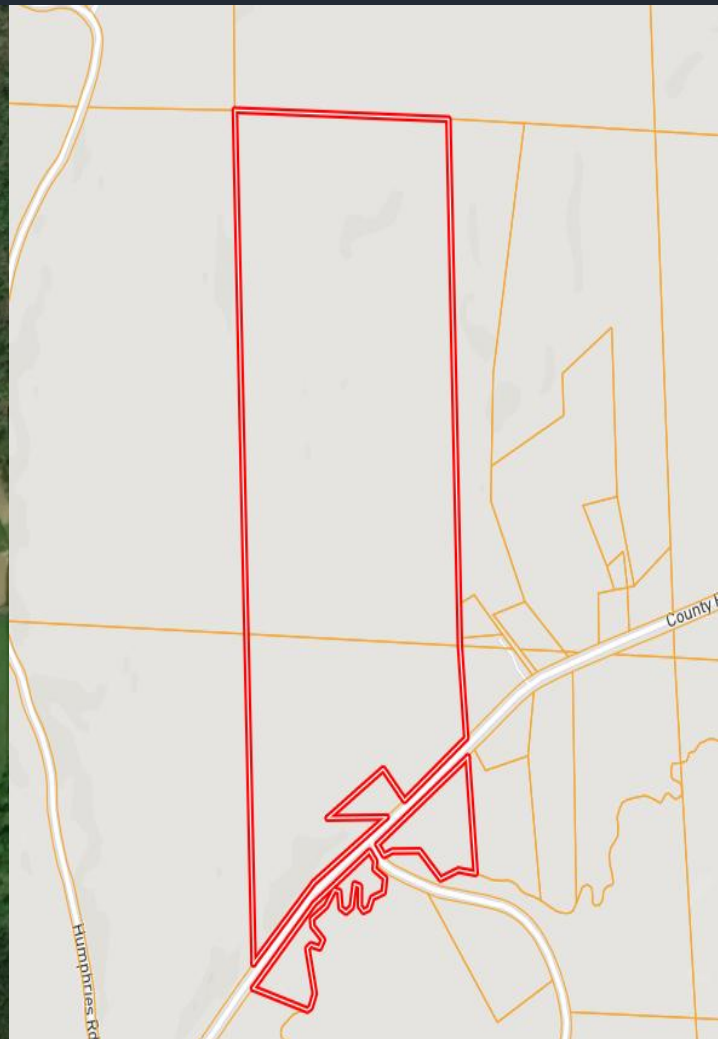
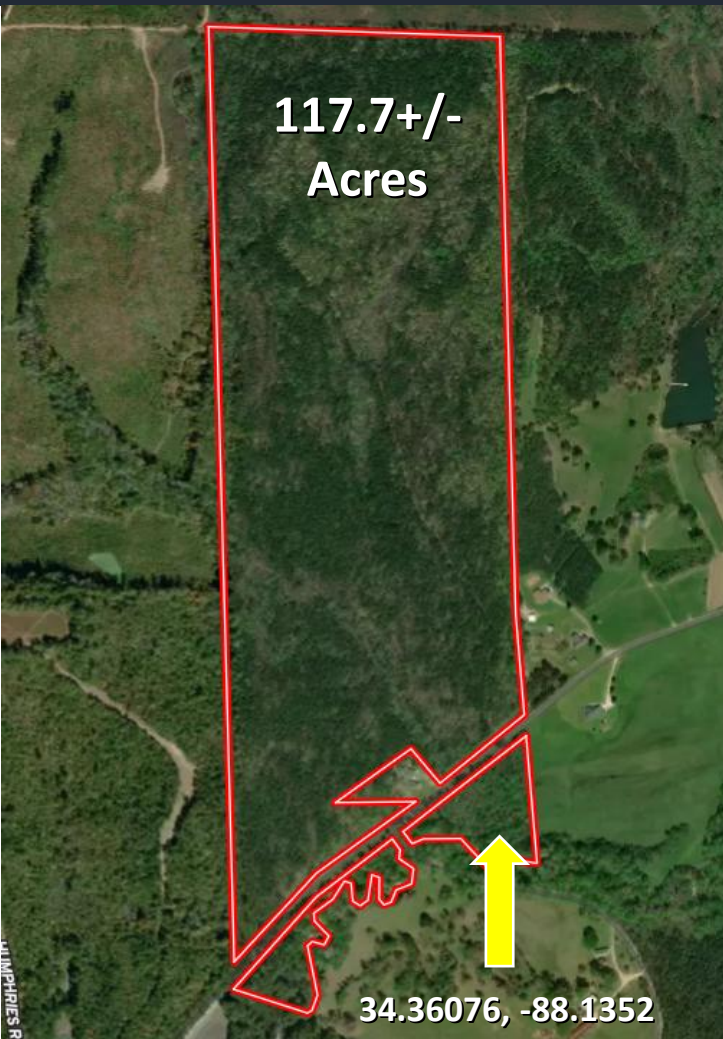
A Real Estate Expert You Can Trust

TomSmithLandandHomes.com

Information is believed to be accurate but not guaranteed.



Aerial & Ownership Map



[Click Here for Interactive Link](#)



**WALKER
TRANUM**
REALTOR®

Office: 662.268.6333

Cell: 662.769.1442

Walker@TomSmithHomes.com



Expect More. Get More.

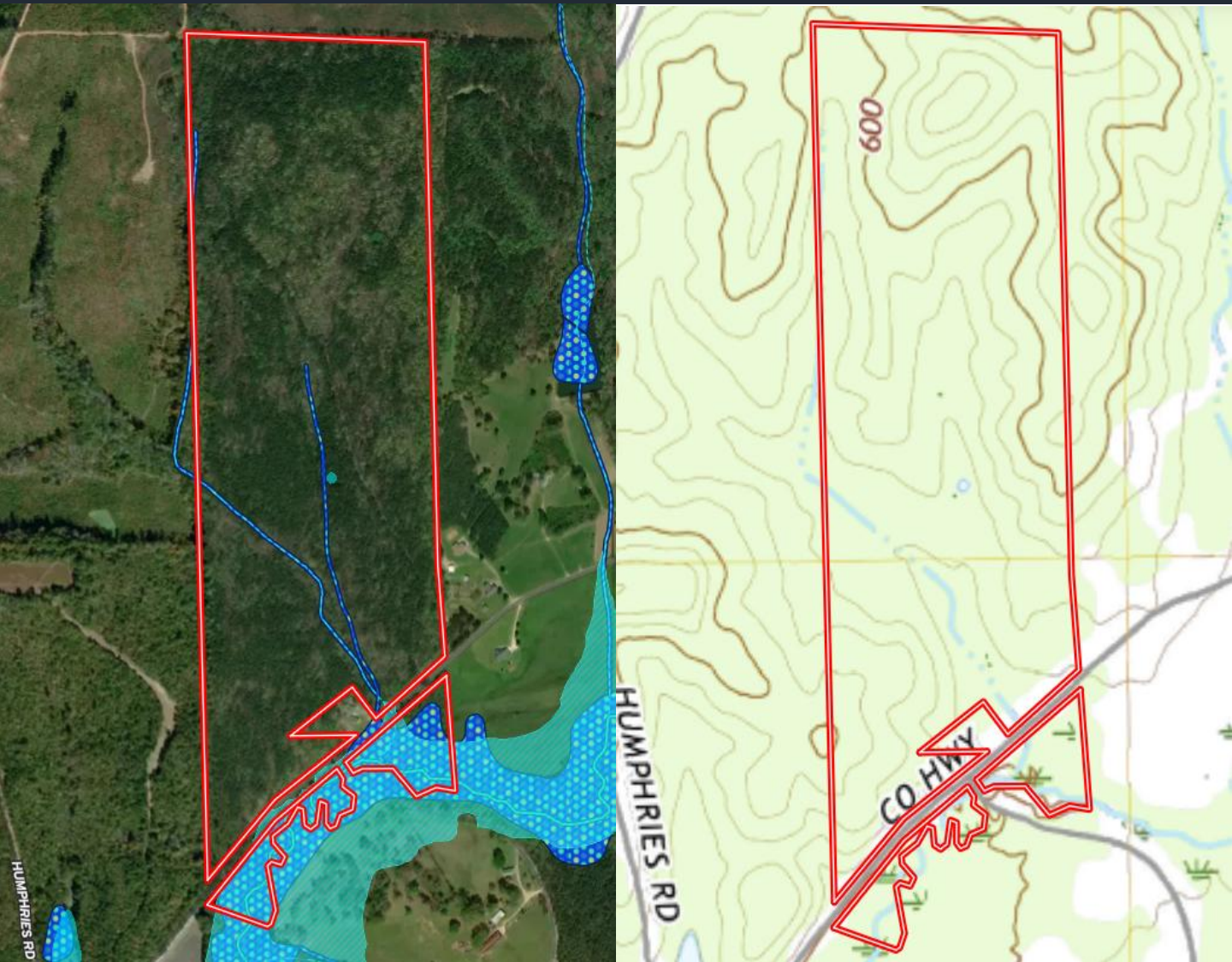
A Real Estate Expert You Can Trust

TomSmithLandandHomes.com

Information is believed to be accurate but not guaranteed.



Flood & Topo Map



**WALKER
TRANUM**
REALTOR®

Office: 662.268.6333

Cell: 662.769.1442

Walker@TomSmithHomes.com



Expect More. Get More.

A Real Estate Expert You Can Trust

TomSmithLandandHomes.com

Information is believed to be accurate but not guaranteed.



Directional Map



Directions from AL-19N in Vina, AL: Leaving Vina, head south on County Road 23 towards AL-19 North for 5.5 miles. The property spans across both sides of the road.

GOOGLE MAP LINK



**WALKER
TRANUM**
REALTOR®

Office: 662.268.6333

Cell: 662.769.1442

Walker@TomSmithHomes.com



Expect More. Get More.

A Real Estate Expert You Can Trust

TomSmithLandandHomes.com

Information is believed to be accurate but not guaranteed.

