

Updated 4-Bed, 2-Bath Home | 609 S. Fifth Avenue, Cleveland, MS



\$365,000

Welcome to **609 S. Fifth Avenue**- a beautifully updated 4-bedroom, 2-bathroom home nestled on a corner lot in Cleveland, Bolivar County, MS. With its clean curb appeal and inviting front porch, this home is full of character and warmth. Step inside to an open-concept living space perfect for entertaining or relaxing. The spacious living room flows effortlessly into the kitchen and dining areas, with modern flooring and natural light though-out. Enjoy the benefits of a corner lot, providing extra outdoor space and privacy, with mature trees and a fully accessible side yard- perfect for pets, kids, or future landscaping projects. Don't miss your chance to experience the comfort of this beautiful home—call Tracey Bell today to schedule your private showing!



**TRACEY
BELL**

MANAGING BROKER

Office: 662.441.2500

Cell: 662.719.4720

Tracey@TomSmithLand.com



Expect More. Get More.

A Real Estate Expert You Can Trust

TomSmithLandandHomes.com

Information is believed to be accurate but not guaranteed.





A Real Estate Expert
You Can Trust!

TRACEY BELL

MANAGING BROKER

O: 662.441.2500 C: 662.719.4720

Tracey@TomSmithLand.com

TomSmithLandandHomes.com



Expect More. Get More.



Information is believed to be accurate but not guaranteed.



A Real Estate Expert
You Can Trust!

TRACEY BELL

MANAGING BROKER

O: 662.441.2500 C: 662.719.4720

Tracey@TomSmithLand.com

TomSmithLandandHomes.com



Expect More. Get More.



Information is believed to be accurate but not guaranteed.



**A Real Estate Expert
You Can Trust!**

TRACEY BELL

MANAGING BROKER

O: 662.441.2500 C: 662.719.4720

Tracey@TomSmithLand.com

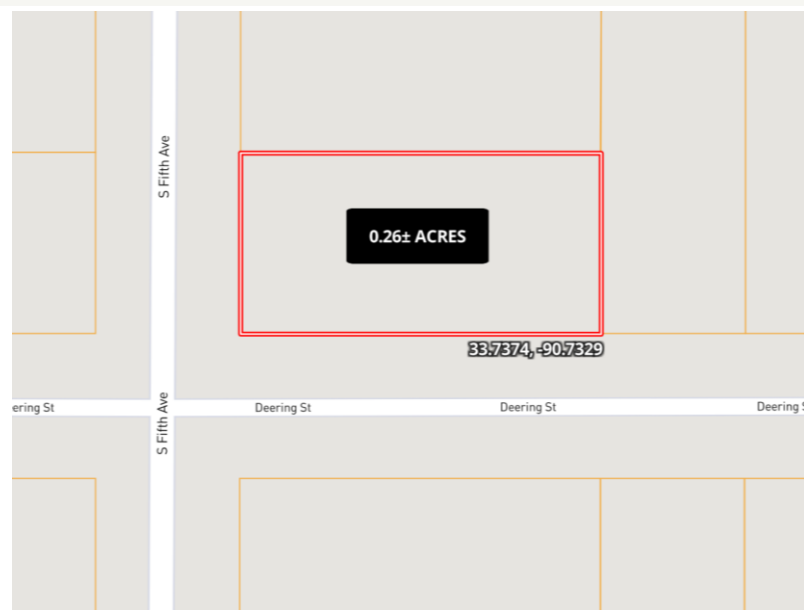
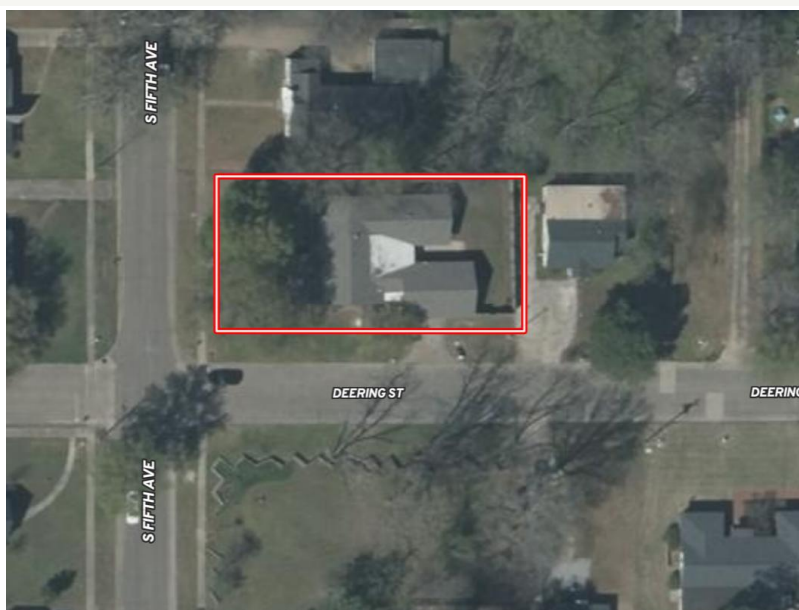
TomSmithLandandHomes.com

**Tom
Smith
LAND AND
HOMES**

Expect More. Get More.

2011-2024
BEST
BROKERAGES

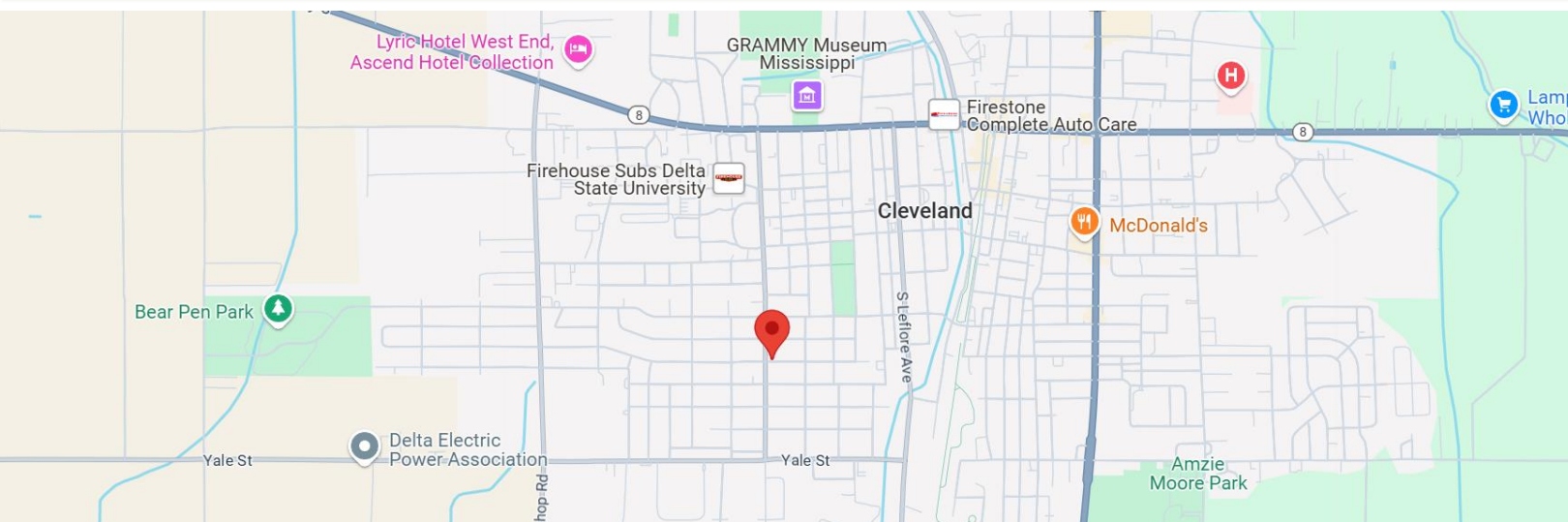
Information is believed to be accurate but not guaranteed.



Directions from Hwy 8 & Hwy 61 in Cleveland, MS: Travel west on Hwy 8 for 1 mile. Turn left onto Fifth Avenue and travel 0.7 miles and the home will be on the left.

Address: 609 S. Fifth Ave., Cleveland, MS 38730

[Google Maps](#) [Link](#)



**TRACEY
BELL**

MANAGING BROKER

Office: 662.441.2500

Cell: 662.719.4720

Tracey@TomSmithLand.com



Expect More. Get More.

A Real Estate Expert You Can Trust

TomSmithLandandHomes.com

Information is believed to be accurate but not guaranteed.

