

# INVESTMENT OPPORTUNITY



**510 Lee Street, Cleveland, MS 38732**

**\$63,175**

This 3-bedroom, 1-bathroom home offers incredible potential! The spacious living room seamlessly connects to the kitchen, making it ideal for entertaining. This property could become a wonderful home or investment opportunity with a few updates, new appliances, and a roof replacement. Under the 1-car carport is a storage room for outdoor equipment. This USDA property is sold "As-Is, Where-Is," with the title conveyed via Quitclaim Deed. Buyers must sign a Hold Harmless form before entering the property. For more details or to make an offer, visit [www.Homes4purchase.com](http://www.Homes4purchase.com). Contact Abby Abernathy today to schedule your private showing!



**ABBY**  
**ABERNATHY**  
REALTOR®

Office: 662.441.2500

Cell: 940.781.3137

[Abby@TomSmithLand.com](mailto:Abby@TomSmithLand.com)



Expect More. Get More.

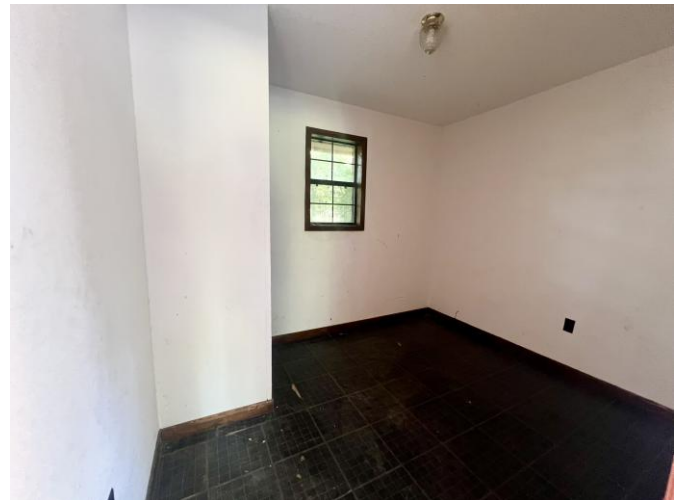
**A Real Estate Expert You Can Trust**

[TomSmithLandandHomes.com](http://TomSmithLandandHomes.com)

Information is believed to be accurate but not guaranteed.







**A Real Estate Expert**  
*You Can Trust!*

**ABBY ABERNATHY**  
REALTOR®  
O: 662.441.2500 C: 940.781.3137  
Abby@TomSmithLand.com  
TomSmithLandandHomes.com

**Tom Smith**  
LAND AND  
HOMES  
Expect More. Get More.

LandReport  
2011-2024  
BEST  
BROKERAGES

Information is believed to be accurate but not guaranteed.





## A Real Estate Expert *You Can Trust!*

**ABBY ABERNATHY**  
REALTOR®

O: 662.441.2500 C: 940.781.3137

Abby@TomSmithLand.com

TomSmithLandandHomes.com



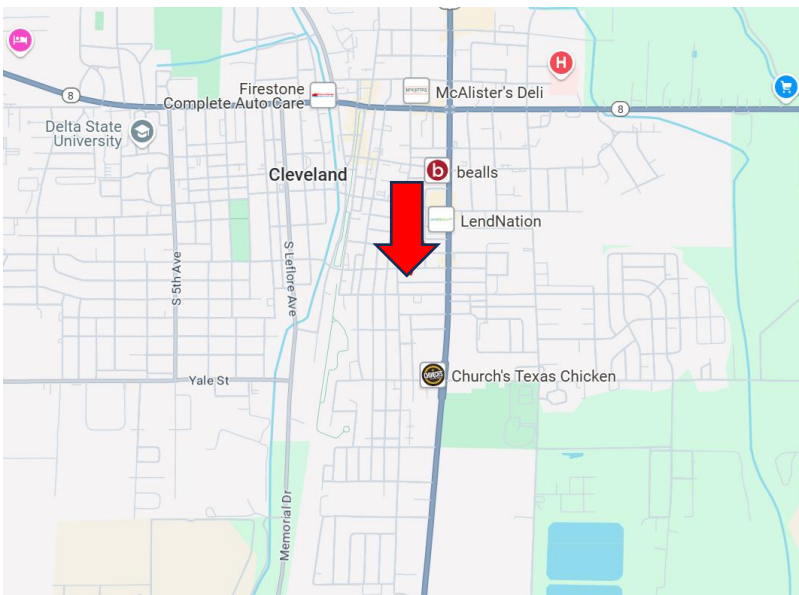
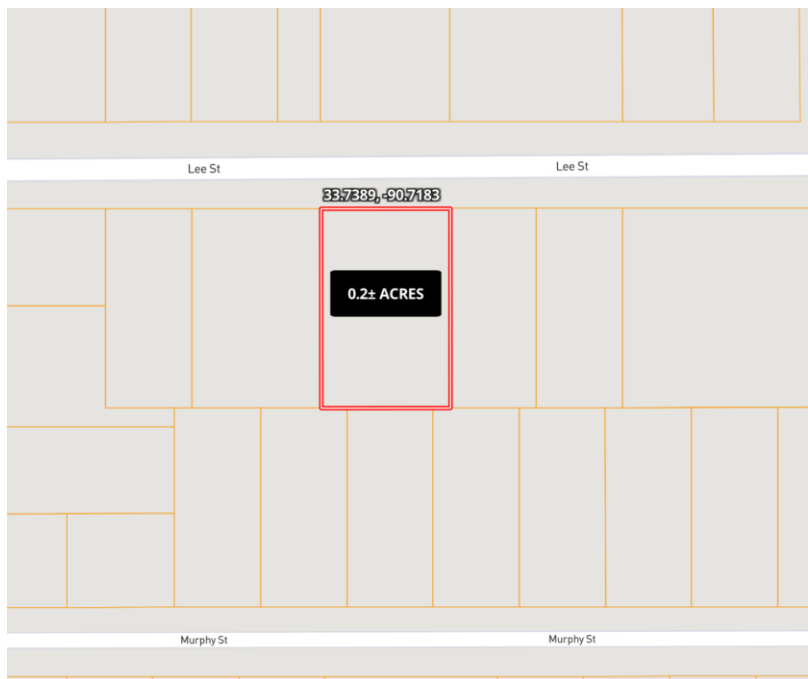
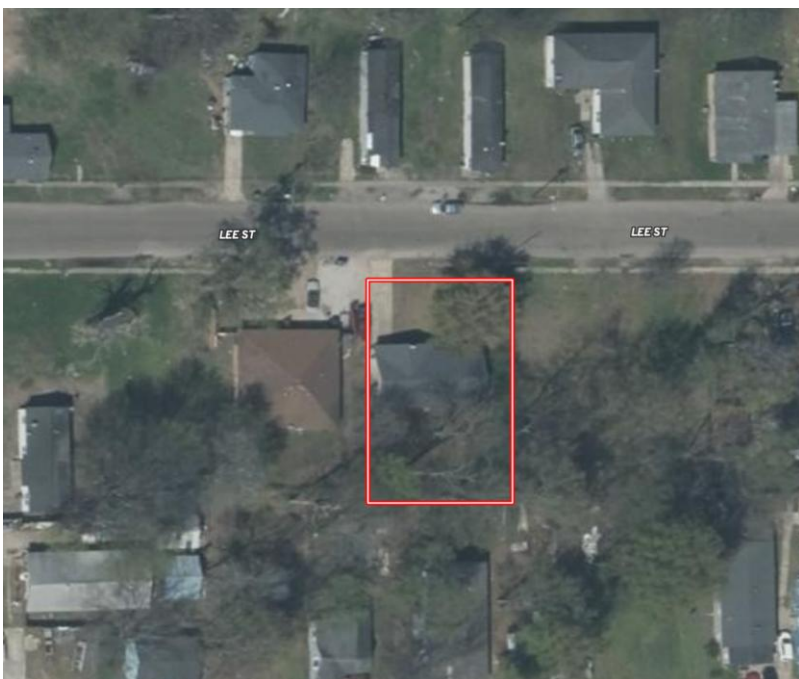
Expect More. Get More.

Information is believed to be accurate but not guaranteed.



# MAPS

[Click for Interactive Map](#)



## Directions from the Intersection of HWY 8 and HWY 61 in Cleveland:

Travel south on HWY 61 for 0.6 miles. Turn right on Lee Street, and the home will be on your left in 0.1 miles.

**510 Lee Street, Cleveland, MS 38732**

[Click for Google Maps](#)



**ABBY**  
**ABERNATHY**  
REALTOR®

Office: 662.441.2500

Cell: 940.781.3137

[Abby@TomSmithLand.com](mailto:Abby@TomSmithLand.com)



Expect More. Get More.

**A Real Estate Expert You Can Trust**

[TomSmithLandandHomes.com](http://TomSmithLandandHomes.com)

Information is believed to be accurate but not guaranteed.

