

INVESTMENT OPPORTUNITY



510 Lee Street, Cleveland, MS 38732

\$66,600

This 3-bedroom, 1-bathroom home offers incredible potential! The spacious living room seamlessly connects to the kitchen, making it ideal for entertaining. This property could become a wonderful home or investment opportunity with a few updates, new appliances, and a roof replacement. Under the 1-car carport is a storage room for outdoor equipment. This USDA property is sold "As-Is, Where-Is," with the title conveyed via Quitclaim Deed. Buyers must sign a Hold Harmless form before entering the property. For more details or to make an offer, visit www.Homes4purchase.com. Contact Abby Abernathy today to schedule your private showing!



ABBY
ABERNATHY
REALTOR®

Office: 662.441.2500

Cell: 940.781.3137

Abby@TomSmithLand.com



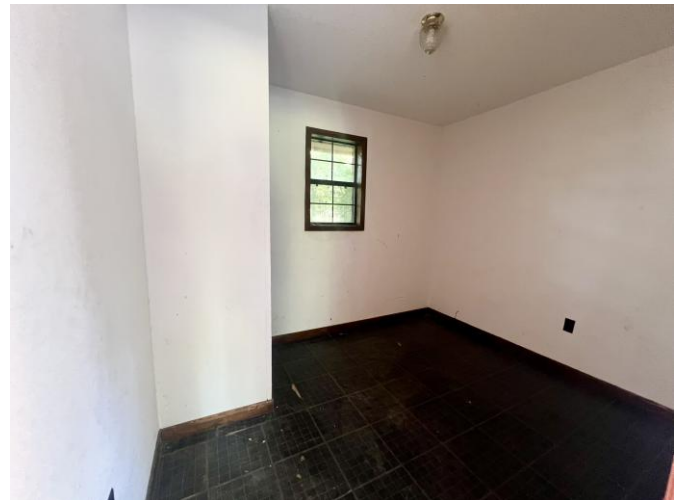
Expect More. Get More.

A Real Estate Expert You Can Trust

TomSmithLandandHomes.com

Information is believed to be accurate but not guaranteed.





A Real Estate Expert
You Can Trust!

ABBY ABERNATHY
REALTOR®
O: 662.441.2500 C: 940.781.3137
Abby@TomSmithLand.com
TomSmithLandandHomes.com

Tom Smith
LAND AND
HOMES

Expect More. Get More.

LandReport
2011-2024
BEST
BROKERAGES

Information is believed to be accurate but not guaranteed.



A Real Estate Expert
You Can Trust!

ABBY ABERNATHY
REALTOR®

O: 662.441.2500 C: 940.781.3137

Abby@TomSmithLand.com

TomSmithLandandHomes.com



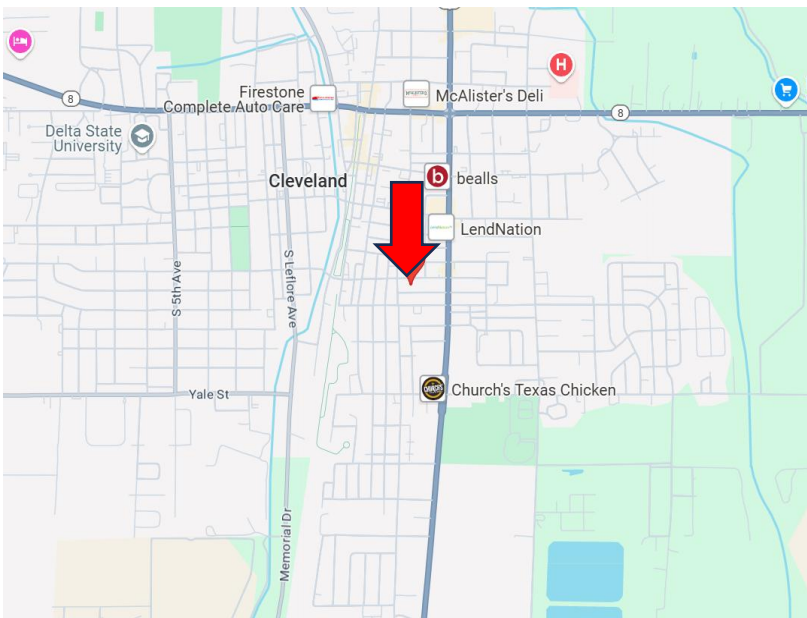
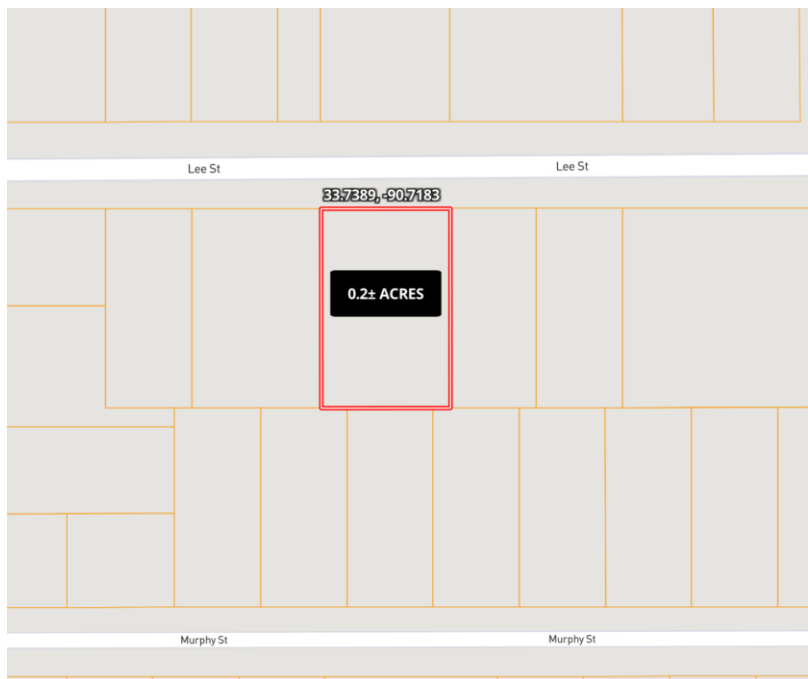
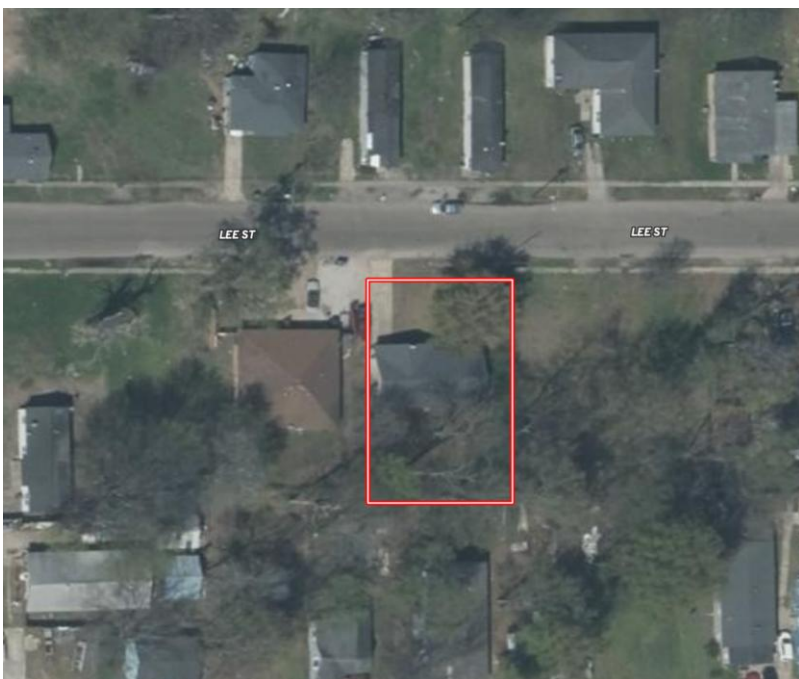
Expect More. Get More.



Information is believed to be accurate but not guaranteed.

MAPS

[Click for Interactive Map](#)



Directions from the Intersection of HWY 8 and HWY 61 in Cleveland:

Travel south on HWY 61 for 0.6 miles. Turn right on Lee Street, and the home will be on your left in 0.1 miles.

510 Lee Street, Cleveland, MS 38732

[Click for Google Maps](#)



ABBY
ABERNATHY
REALTOR®

Office: 662.441.2500

Cell: 940.781.3137

Abby@TomSmithLand.com



Expect More. Get More.

A Real Estate Expert You Can Trust

TomSmithLandandHomes.com

Information is believed to be accurate but not guaranteed.

