

40.28± Acres in Grenada County | \$120,000



Located at the intersection of HWY 8 and Camp Luther Road between Oxberry and Minter City in Grenada County, MS, this recreational tract has ample opportunity! A 2.5± acre pond is situated on the north end of the property. While currently serving as a fishing hole, it also allows for the potential to create a habitat for duck hunting. Meanwhile, the tract currently offers both deer and turkey habitat. If you are looking for a tract of land where you can both hunt and fish, look no further! For more details and to schedule your private showing, call Charlie Heinsz!



**CHARLIE
HEINSZ**
REALTOR®

Office: 662.441.2500

Cell: 662.719.7218

Charlie@TomSmithLand.com



Expect More. Get More.

A Real Estate Expert You Can Trust

TomSmithLandandHomes.com

Information is believed to be accurate but not guaranteed.





CHARLIE HEINSZ

REALTOR®

Office: 662.441.2500

Cell: 662.719.7218

Charlie@TomSmithLand.com



A Real Estate Expert You Can Trust

TomSmithLandandHomes.com

Information is believed to be accurate but not guaranteed.





The 2.5± acre pond attracts wildlife and is great for fishing.



CHARLIE HEINSZ
REALTOR®

Office: 662.441.2500

Cell: 662.719.7218

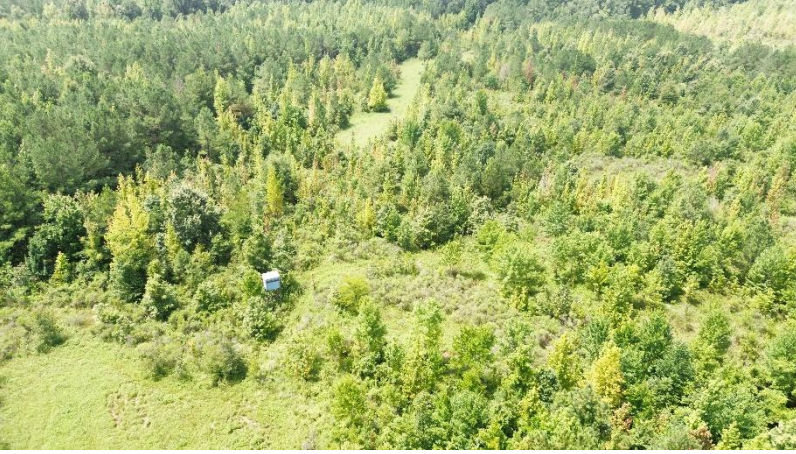
Charlie@TomSmithLand.com



A Real Estate Expert You Can Trust
TomSmithLandandHomes.com

Information is believed to be accurate but not guaranteed.





CHARLIE HEINSZ

REALTOR®

Office: 662.441.2500

Cell: 662.719.7218

Charlie@TomSmithLand.com

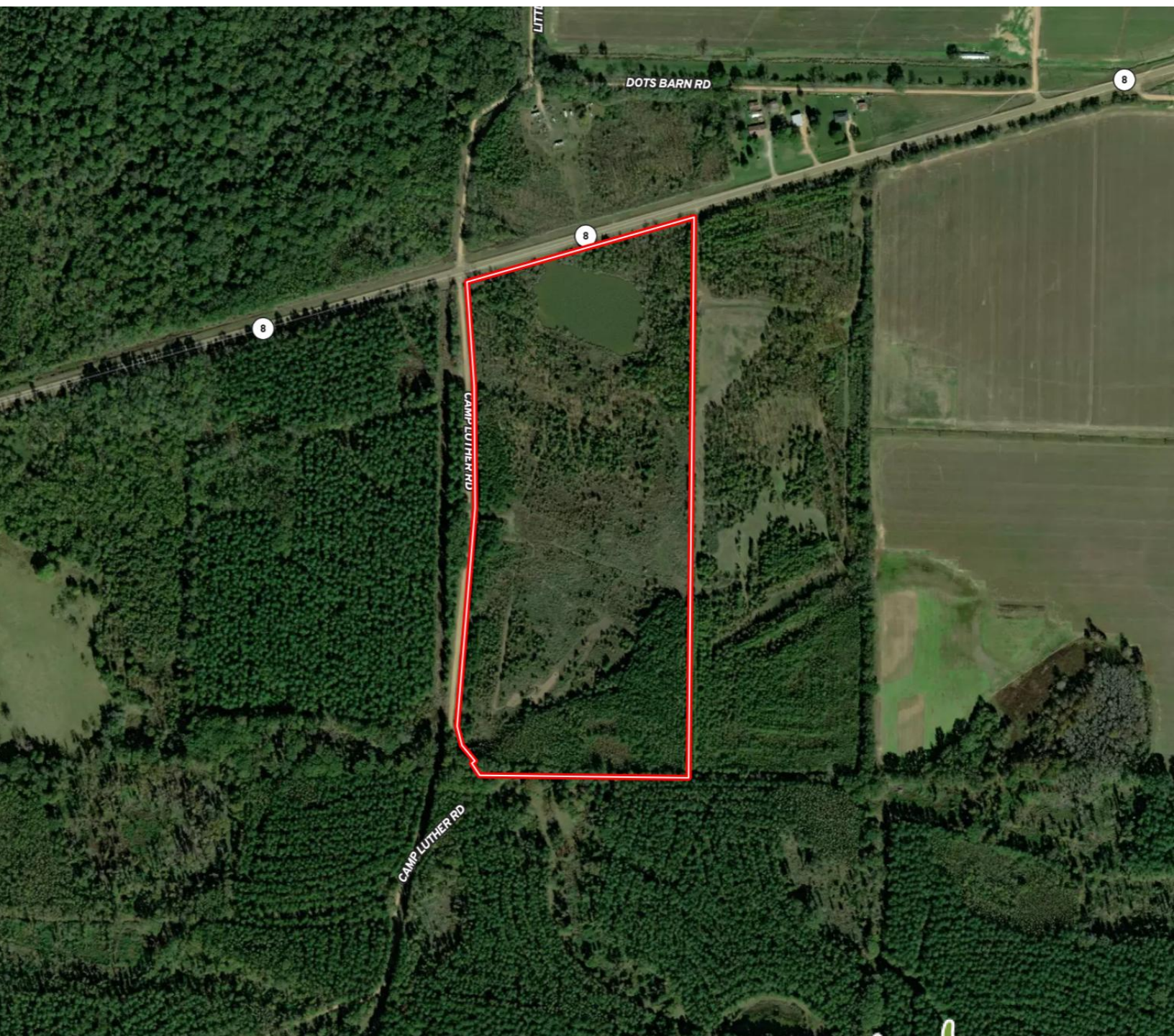


A Real Estate Expert You Can Trust

TomSmithLandandHomes.com

Information is believed to be accurate but not guaranteed.





CHARLIE HEINSZ
REALTOR®

Office: 662.441.2500

Cell: 662.719.7218

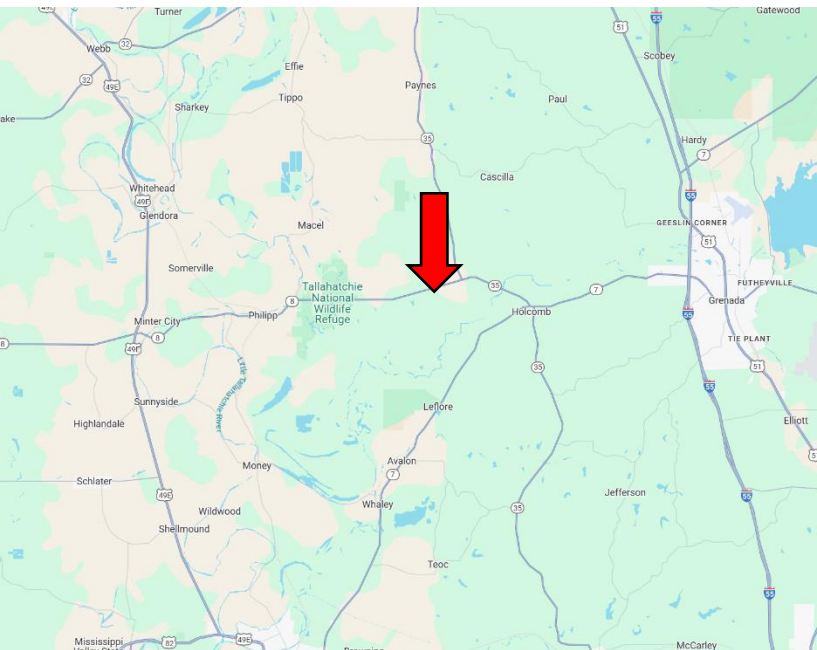
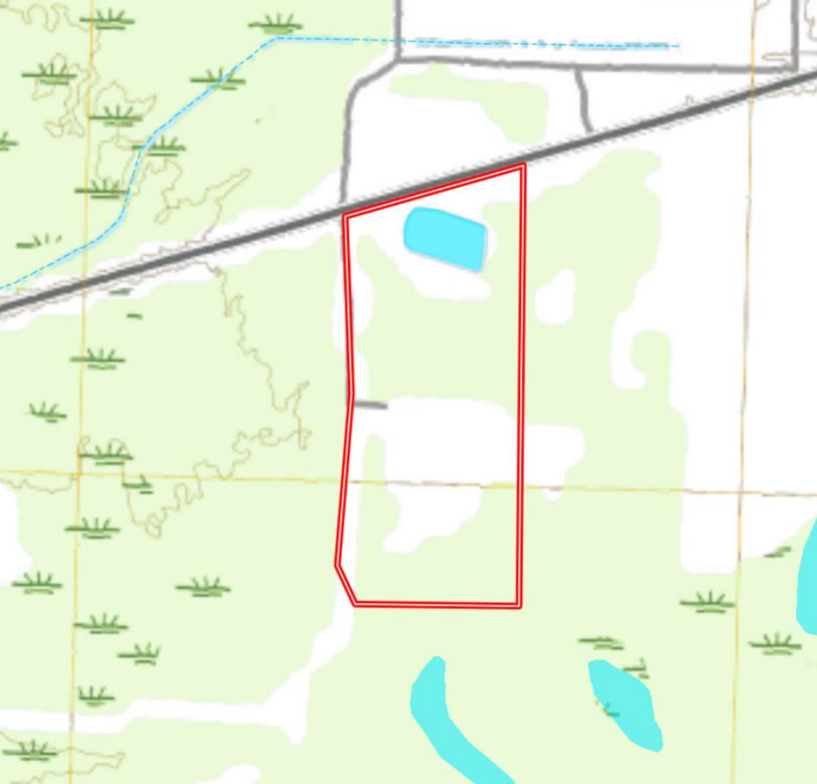
Charlie@TomSmithLand.com



A Real Estate Expert You Can Trust
TomSmithLandandHomes.com

Information is believed to be accurate but not guaranteed.





Directions from Hwy 8 & I-55 in Grenada, MS:

Travel west on HWY 8 for 8 miles before veering right to stay on HWY 8. After 5.2 miles, the property will be on the right.

[Click for Google Maps](#)



**CHARLIE
HEINSZ**
REALTOR®

Office: 662.441.2500

Cell: 662.719.7218

Charlie@TomSmithLand.com



Expect More. Get More.

A Real Estate Expert You Can Trust

TomSmithLandandHomes.com

Information is believed to be accurate but not guaranteed.

