

CHARMING FIXER-UPPER ON 0.4± ACRES LOWNDES COUNTY, MS | \$80,000



This property features a home situated on approximately 0.4± acres in Lowndes County, MS. Ideally located between West Point, Starkville, Columbus, and Mississippi State University, it offers a convenient central location. The home includes three bedrooms, one bathroom, and a welcoming front porch. Additional features include a storage shed, kennels, and quick access to Hwy 45—just seconds away. With its prime location and versatile potential, this property could serve as a gameday retreat, rental investment, or Airbnb. Properties with this many possibilities, just minutes from campus, are hard to come by. Call Walker today for more information!



**WALKER
TRANUM**
REALTOR®

Office: 662.268.6333

Cell: 662.769.1442

Walker@TomSmithHomes.com



Expect More. Get More.

A Real Estate Expert You Can Trust

TomSmithLandandHomes.com

Information is believed to be accurate but not guaranteed.





WALKER TRANUM

REALTOR®

Office: 662.268.6333

Cell: 662.769.1442

Walker@TomSmithHomes.com



Expect More. Get More.

A Real Estate Expert You Can Trust

TomSmithLandandHomes.com

Information is believed to be accurate but not guaranteed.



Aerial Map



[Click Here for Interactive Map Link](#)



**WALKER
TRANUM**
REALTOR®

Office: 662.268.6333

Cell: 662.769.1442

Walker@TomSmithHomes.com



Expect More. Get More.

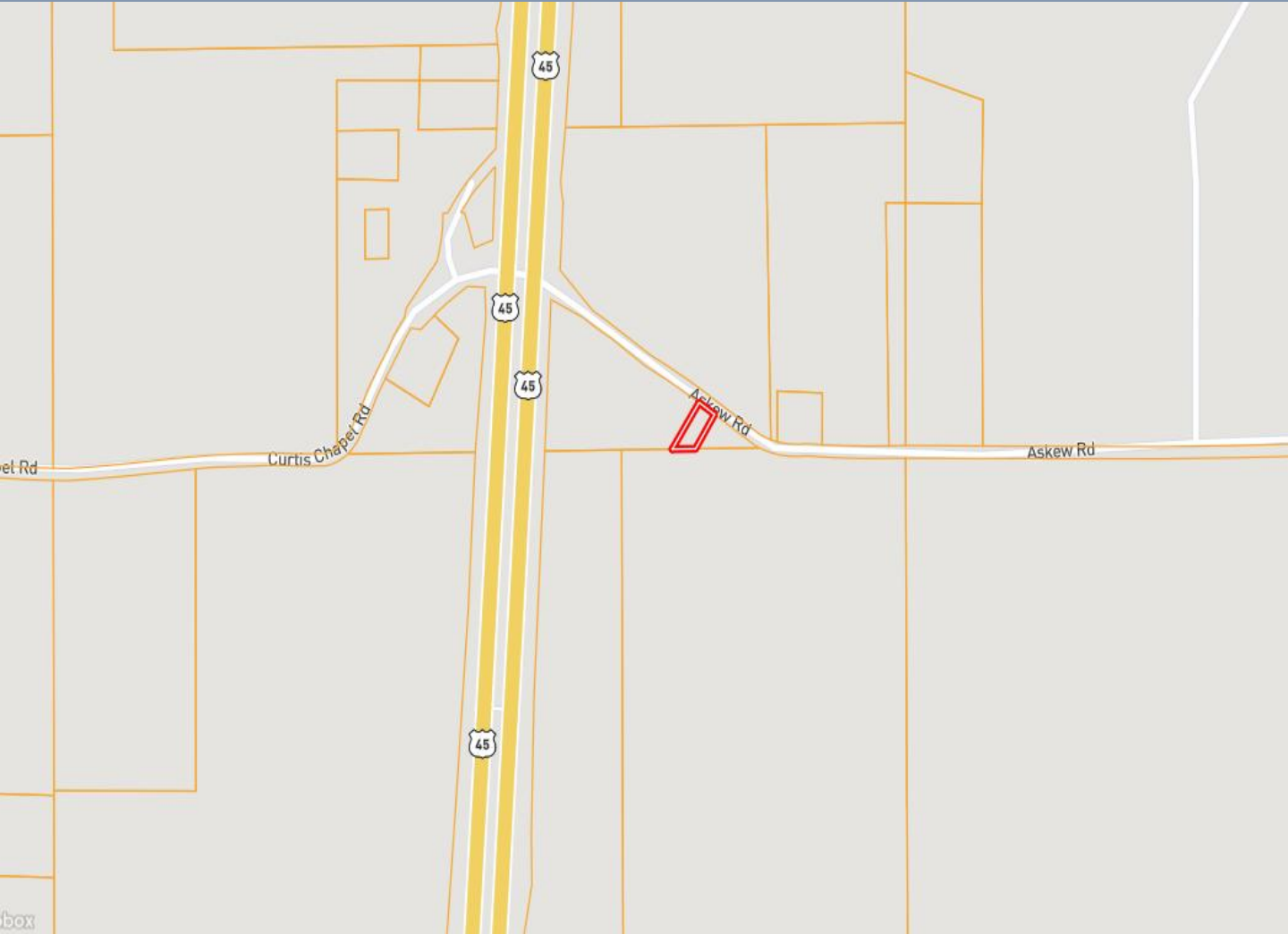
A Real Estate Expert You Can Trust

TomSmithLandandHomes.com

Information is believed to be accurate but not guaranteed.



Ownership Map



**WALKER
TRANUM**
REALTOR®

Office: 662.268.6333

Cell: 662.769.1442

Walker@TomSmithHomes.com



Expect More. Get More.

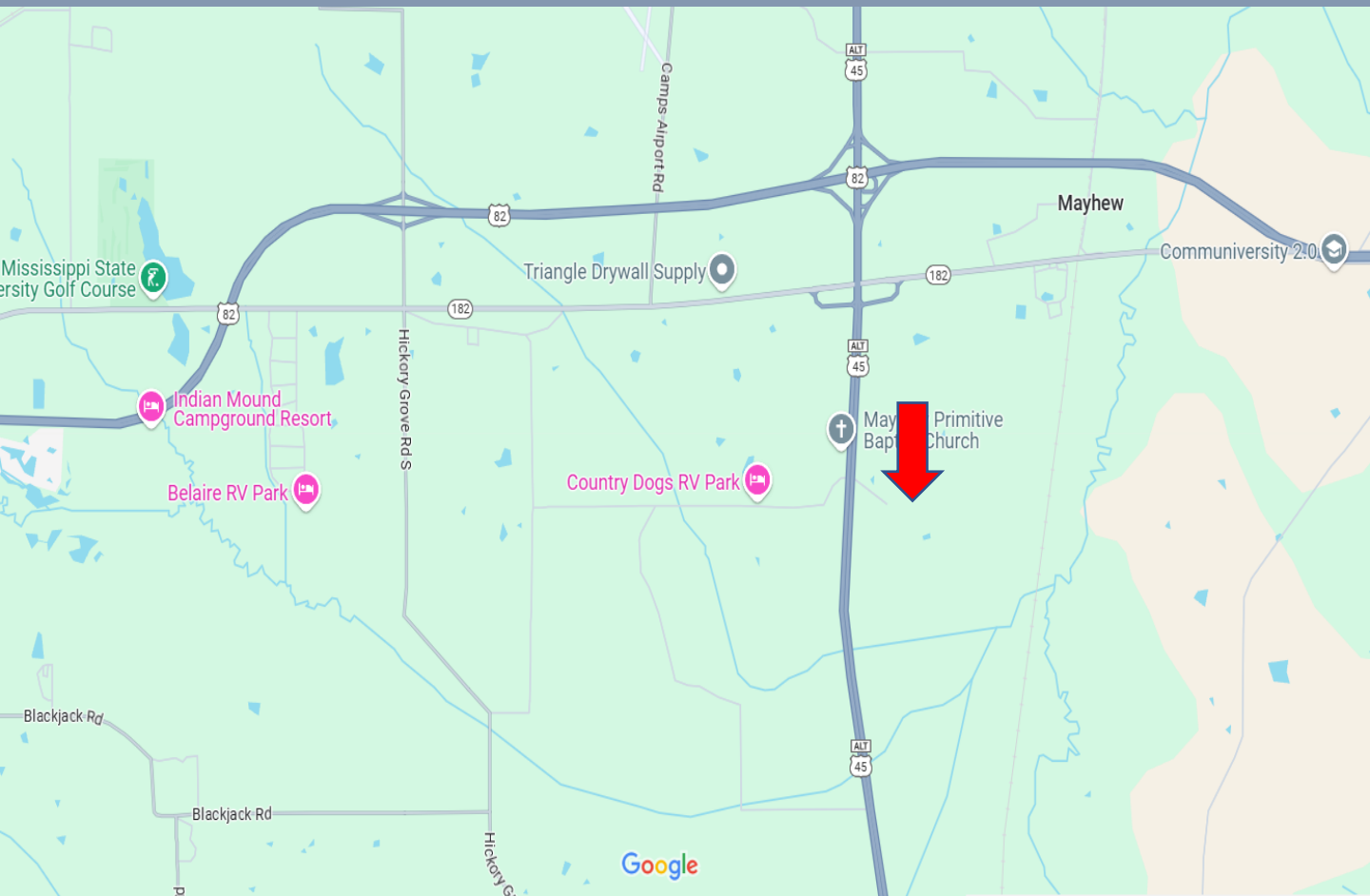
A Real Estate Expert You Can Trust

TomSmithLandandHomes.com

Information is believed to be accurate but not guaranteed.



Directional Map



Directions from MS-12 in Starkville, MS: Leaving Starkville, merge onto MS-25 N and follow for 4 miles. Then exit onto US-45 ALT S in Lowndes County for 8.1 miles. Continue onto US-45 ALT S towards Askew Road for 1.5 miles and the house will be on your right.

[Google Map Link](#)



**WALKER
TRANUM**
REALTOR®

Office: 662.268.6333

Cell: 662.769.1442

Walker@TomSmithHomes.com



Expect More. Get More.

A Real Estate Expert You Can Trust

TomSmithLandandHomes.com

Information is believed to be accurate but not guaranteed.

