

# Hunting Tract with Frontage on Ascalmore Creek 64.65± Acres in Tallahatchie County | \$165,000

With frontage of Ascalmore Creek in Tallahatchie County, this hunting tract has loads of potential for both deer and turkey. In the center of the property, there is a clearing for an additional food plot and shooting lane. The property can be accessed from Ascalmore Creek Road and Mitchell Road. For more details and to schedule a private showing, please call Charlie Heinsz.



**CHARLIE  
HEINSZ**  
REALTOR®

Office: 662.441.2500

Cell: 662.719.7218

Charlie@TomSmithLand.com



Expect More. Get More.

**A Real Estate Expert You Can Trust**

TomSmithLandandHomes.com

Information is believed to be accurate but not guaranteed.







**CHARLIE HEINSZ**  
REALTOR®

Office: 662.441.2500

Cell: 662.719.7218

[Charlie@TomSmithLand.com](mailto:Charlie@TomSmithLand.com)



**A Real Estate Expert You Can Trust**  
[TomSmithLandandHomes.com](http://TomSmithLandandHomes.com)

Information is believed to be accurate but not guaranteed.







**CHARLIE HEINSZ**

REALTOR®

Office: 662.441.2500

Cell: 662.719.7218

[Charlie@TomSmithLand.com](mailto:Charlie@TomSmithLand.com)



**A Real Estate Expert You Can Trust**

[TomSmithLandandHomes.com](http://TomSmithLandandHomes.com)

Information is believed to be accurate but not guaranteed.







**CHARLIE HEINSZ**  
REALTOR®

Office: 662.441.2500

Cell: 662.719.7218

[Charlie@TomSmithLand.com](mailto:Charlie@TomSmithLand.com)

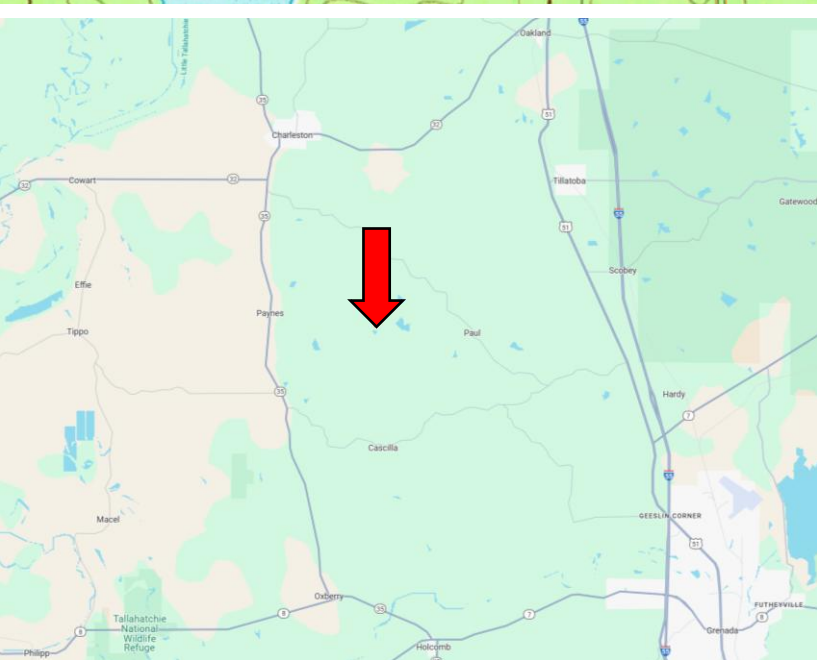
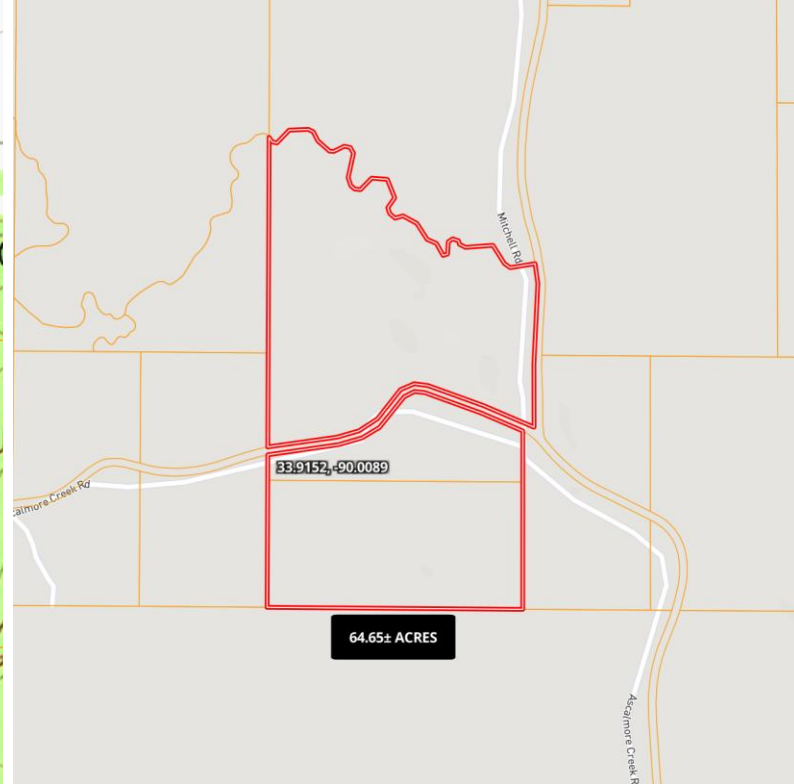
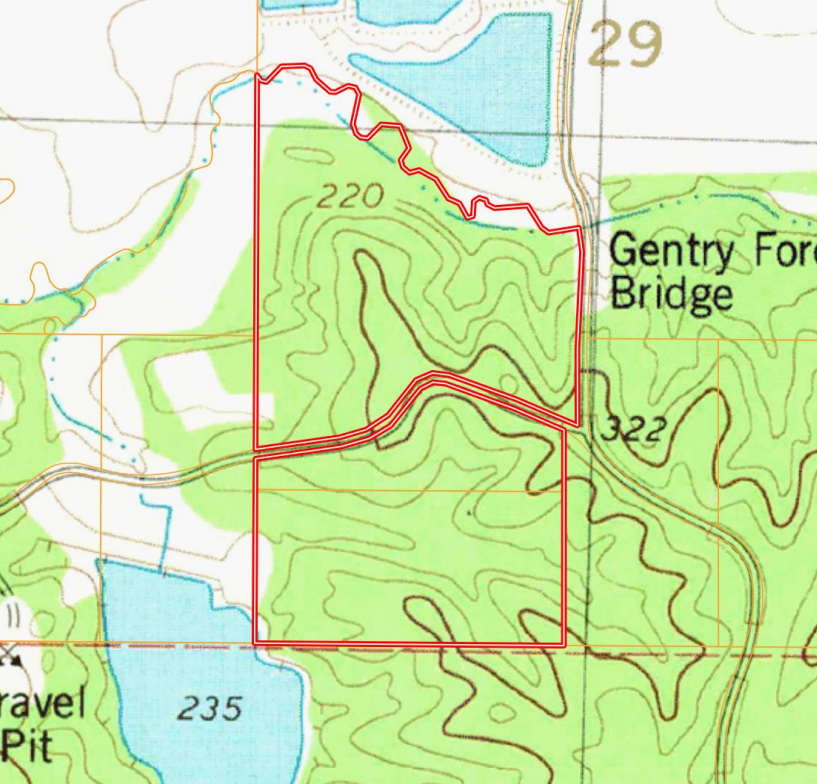


**A Real Estate Expert You Can Trust**  
[TomSmithLandandHomes.com](http://TomSmithLandandHomes.com)

Information is believed to be accurate but not guaranteed.







### Directions from I-55 & HWY 7 in Grenada, MS:

Travel north on I-55 for 1.3 miles before exiting on Papermill Road. Turn left on HWY 51 and travel 0.6 miles before turning left onto Pearidge Road. After 8.4 miles, take a slight left onto Cascilla Road. Continue straight onto Paul-Shady Grove Road for 2 miles, then turn left onto Ascalmore Creek Road. The property will be on the left and right in 2.2 miles.

[Click for Google Maps.](#)



**CHARLIE  
HEINSZ**  
REALTOR®

Office: 662.441.2500

Cell: 662.719.7218

Charlie@TomSmithLand.com



Expect More. Get More.

**A Real Estate Expert You Can Trust**

TomSmithLandandHomes.com

Information is believed to be accurate but not guaranteed.

