

# Hunting Tract with Frontage on Ascalmore Creek

## 75.9± Acres in Tallahatchie County | \$192,500

With frontage of Ascalmore Creek in Tallahatchie County, this hunting tract has loads of potential for both deer and turkey. On the northwest side of the property, there is pasture land that could be strategically converted into a food plot. In the center of the property, there is a clearing for an additional food plot and shooting lane. The property can be accessed from Ascalmore Creek Road and Mitchell Road. For more details and to schedule a private showing, please call Charlie Heinsz.



**CHARLIE  
HEINSZ**  
REALTOR®

Office: 662.441.2500

Cell: 662.719.7218

Charlie@TomSmithLand.com



Expect More. Get More.

**A Real Estate Expert You Can Trust**

TomSmithLandandHomes.com

Information is believed to be accurate but not guaranteed.







**CHARLIE HEINSZ**  
REALTOR®

Office: 662.441.2500

Cell: 662.719.7218

[Charlie@TomSmithLand.com](mailto:Charlie@TomSmithLand.com)



**A Real Estate Expert You Can Trust**  
[TomSmithLandandHomes.com](http://TomSmithLandandHomes.com)

Information is believed to be accurate but not guaranteed.







**CHARLIE HEINSZ**

REALTOR®

Office: 662.441.2500

Cell: 662.719.7218

[Charlie@TomSmithLand.com](mailto:Charlie@TomSmithLand.com)



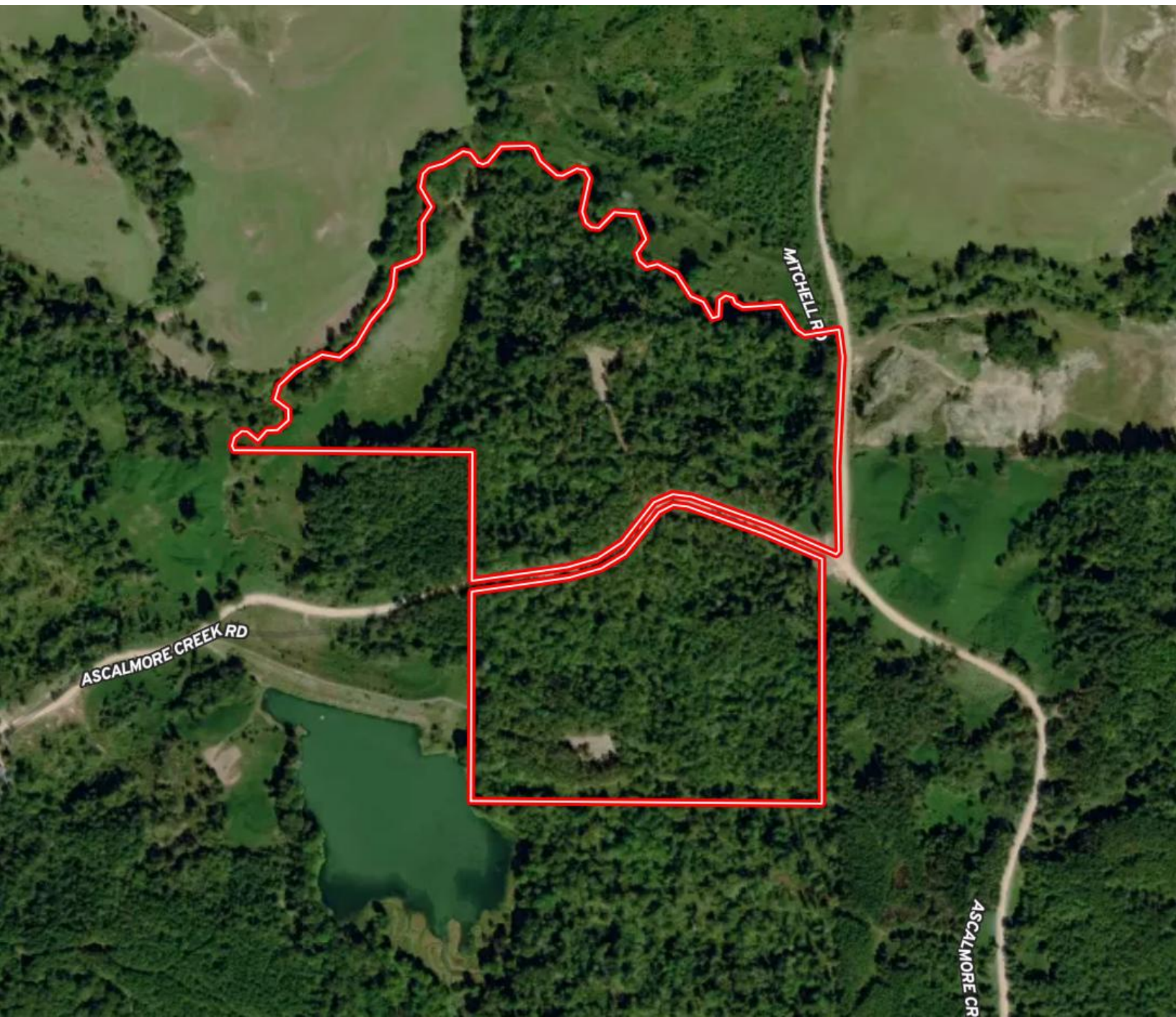
**A Real Estate Expert You Can Trust**

[TomSmithLandandHomes.com](http://TomSmithLandandHomes.com)

Information is believed to be accurate but not guaranteed.







**CHARLIE HEINSZ**  
REALTOR®

Office: 662.441.2500

Cell: 662.719.7218

[Charlie@TomSmithLand.com](mailto:Charlie@TomSmithLand.com)

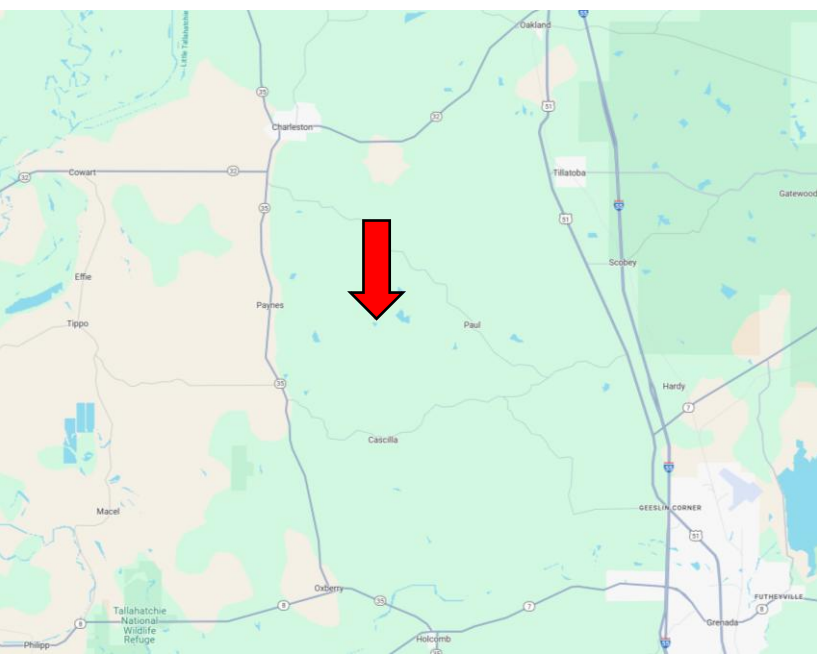
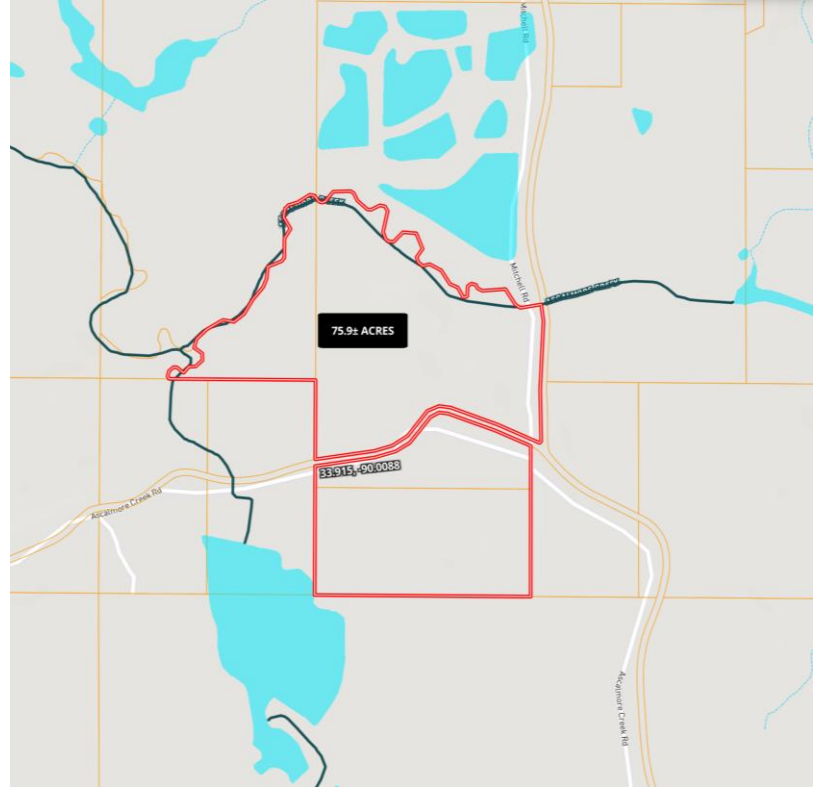
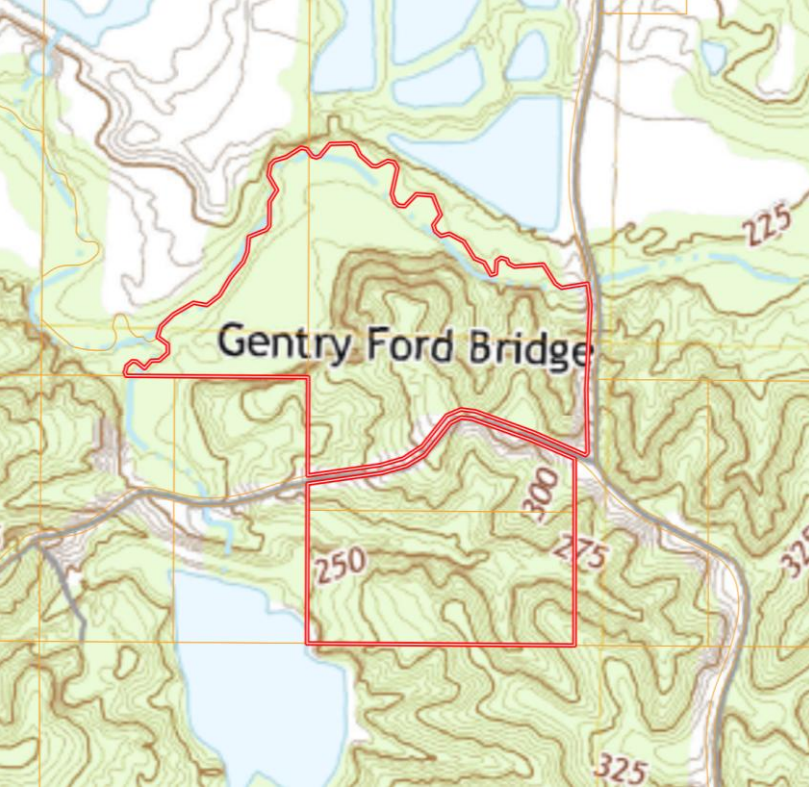


**A Real Estate Expert You Can Trust**  
[TomSmithLandandHomes.com](http://TomSmithLandandHomes.com)

Information is believed to be accurate but not guaranteed.







### Directions from I-55 & HWY 7 in Grenada, MS:

Travel north on I-55 for 1.3 miles before exiting on Papermill Road. Turn left on HWY 51 and travel 0.6 miles before turning left onto Pearidge Road. After 8.4 miles, take a slight left onto Cascilla Road. Continue straight onto Paul-Shady Grove Road for 2 miles, then turn left onto Ascalmore Creek Road. The property will be on the left and right in 2.2 miles.

[Click for Google Maps.](#)



**CHARLIE  
HEINSZ**  
REALTOR®

Office: 662.441.2500

Cell: 662.719.7218

Charlie@TomSmithLand.com



Expect More. Get More.

**A Real Estate Expert You Can Trust**

TomSmithLandandHomes.com

Information is believed to be accurate but not guaranteed.

