

Home & Shop on 1± Acre in Sunflower County, MS
329 Walker Road, Cleveland, MS 38732

\$175,000



Situated on a 1± acre lot between Cleveland and Ruleville, this 3-bedroom, 2-bathroom mobile home spans 1,216± SF. The living room flows seamlessly into the dining area and kitchen. The kitchen features a gas range and stainless-steel appliances. In the primary bathroom offers plenty of storage and a walk-in tile shower. On the back of the home is a screened-in porch, as well as an open porch. Also on the property is a 2-car carport and a 320± SF shop to store outdoor equipment. This property has plenty of space to create your ideal outdoor retreat. Call Charlie Heinsz today to schedule your private showing!



**CHARLIE
HEINSZ**
REALTOR®

Office: 662.441.2500

Cell: 662.719.7218

Charlie@TomSmithLand.com



A Real Estate Expert You Can Trust

TomSmithLandandHomes.com

Information is believed to be accurate but not guaranteed.





CHARLIE HEINSZ
REALTOR®

Office: 662.441.2500

Cell: 662.719.7218

Charlie@TomSmithLand.com



A Real Estate Expert You Can Trust
TomSmithLandandHomes.com

Information is believed to be accurate but not guaranteed.

2011-2023
BEST
BROKERAGES



CHARLIE HEINSZ

REALTOR®

Office: 662.441.2500

Cell: 662.719.7218

Charlie@TomSmithLand.com



A Real Estate Expert You Can Trust

TomSmithLandandHomes.com

Information is believed to be accurate but not guaranteed.





CHARLIE HEINSZ

REALTOR®

Office: 662.441.2500

Cell: 662.719.7218

Charlie@TomSmithLand.com



A Real Estate Expert You Can Trust

TomSmithLandandHomes.com

Information is believed to be accurate but not guaranteed.





CHARLIE HEINSZ
REALTOR®

Office: 662.441.2500

Cell: 662.719.7218

Charlie@TomSmithLand.com

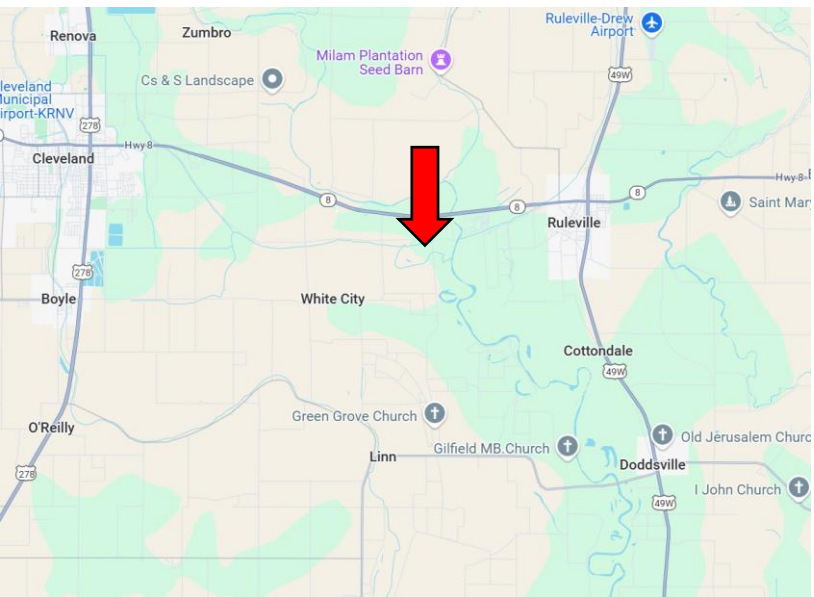
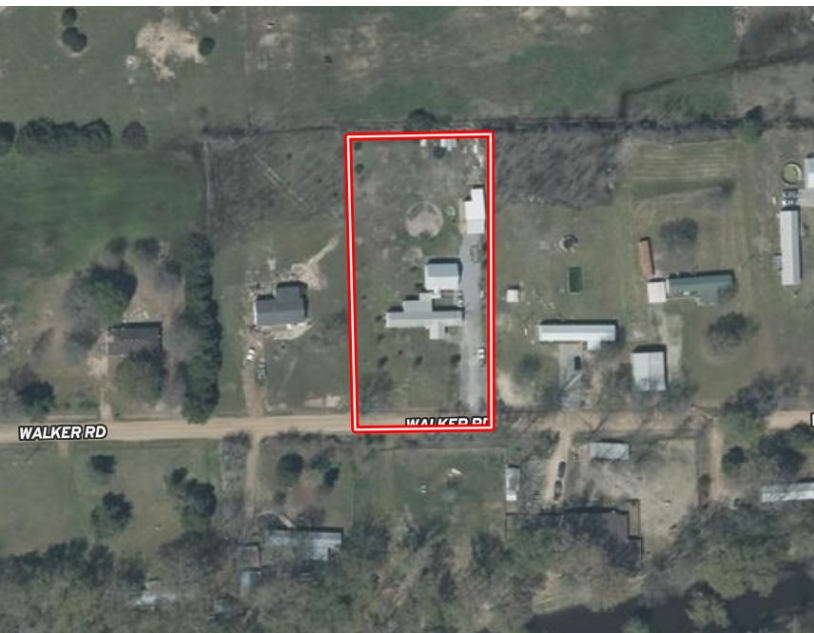


A Real Estate Expert You Can Trust
TomSmithLandandHomes.com

Information is believed to be accurate but not guaranteed.

2011-2023
BEST
BROKERAGES

MAPS | [Click for Interactive Map](#)



Address: 329 Walker Road, Cleveland, MS 38732

Directions from Hwy 8 & Hwy 61 in Cleveland, MS: Travel west on HWY 8 for 6.8 miles. Turn right onto Jefcoat-Lehr Road and travel 0.5 miles. Turn right onto Walker Road, and the home will be your right in 0.1 mile. [Click for Google Maps.](#)



**CHARLIE
HEINSZ**
REALTOR®

Office: 662.441.2500

Cell: 662.719.7218

Charlie@TomSmithLand.com



A Real Estate Expert You Can Trust

TomSmithLandandHomes.com

Information is believed to be accurate but not guaranteed.

