

MOVE-IN READY HOME

7264 FLOWER CREEK DR, SOUTHAVEN, MS 38671



\$350,000

Welcome to your dream home in DeSoto County, located at 7264 Flower Creek Drive, Southaven, MS!

This spacious 4-bedroom, 3-bathroom property offers a generous 2,600 square feet of heated and cooled living space along with a 2-car garage, ensuring comfort for you and your family. The kitchen is equipped with stainless steel appliances and provides ample cabinet space. The master suite is a true retreat, featuring a bathroom with a jetted tub, a double-sink vanity, and beautiful stained glass. Three additional bedrooms offer plenty of space for family, guests, or even a home office. Step outside to your private, fenced-in backyard—an ideal oasis for relaxation and outdoor activities. Enjoy sunny days splashing around in the above-ground pool or hosting summer barbecues on the patio. Situated in a desirable neighborhood, this home provides convenient access to schools, parks, shopping, and more. Don't miss your chance to make this beautiful property your own!



**ANTHONY
STEEN**

REALTOR®

Office: 601.898.2772

Cell: 662.645.5151

Anthony@TomSmithLand.com



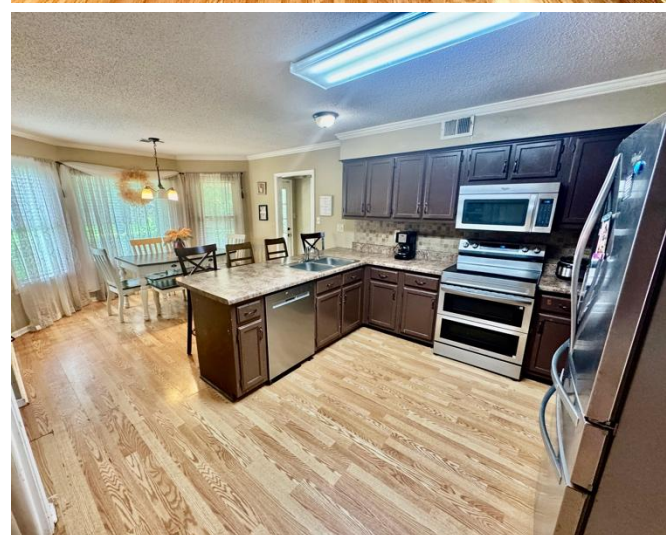
Expect More. Get More.

A Real Estate Expert You Can Trust

TomSmithLandandHomes.com

Information is believed to be accurate but not guaranteed.





A Real Estate Expert
You Can Trust!

ANTHONY STEEN

REALTOR®

O: 601.898.2772 C: 662.645.5151

Anthony@TomSmithLand.com

TomSmithLandandHomes.com

**Tom
Smith
LAND AND
HOMES**

Expect More. Get More.

LandReport
2011-2024
BEST
BROKERAGES

Information is believed to be accurate but not guaranteed.



A Real Estate Expert
You Can Trust!

ANTHONY STEEN
REALTOR®
O: 601.898.2772 C: 662.645.5151
Anthony@TomSmithLand.com
TomSmithLandandHomes.com

Tom Smith
LAND AND HOMES
Expect More. Get More.

LandReport
2011-2024
BEST
BROKERAGES

Information is believed to be accurate but not guaranteed.



A Real Estate Expert *You Can Trust!*

ANTHONY STEEN

REALTOR®

O: 601.898.2772 C: 662.645.5151

Anthony@TomSmithLand.com

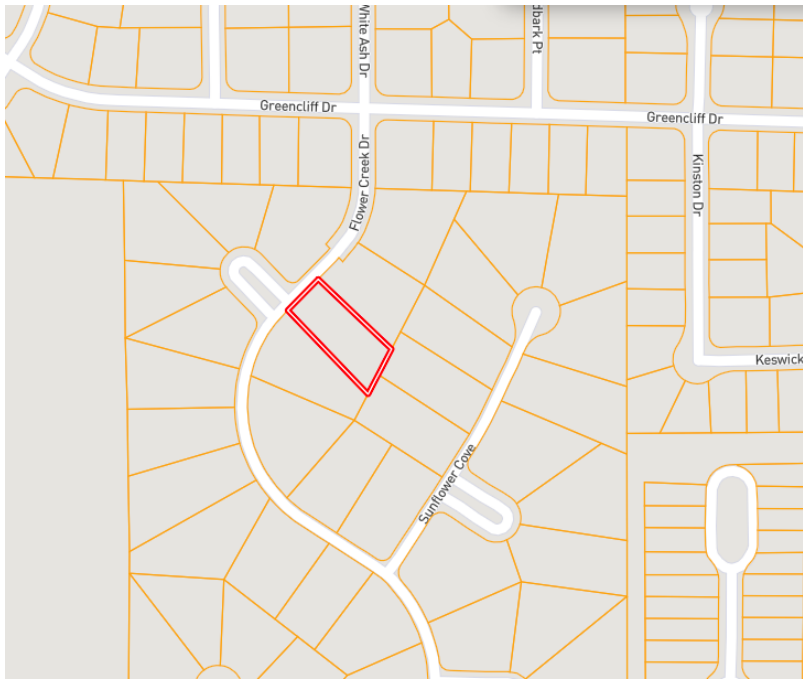
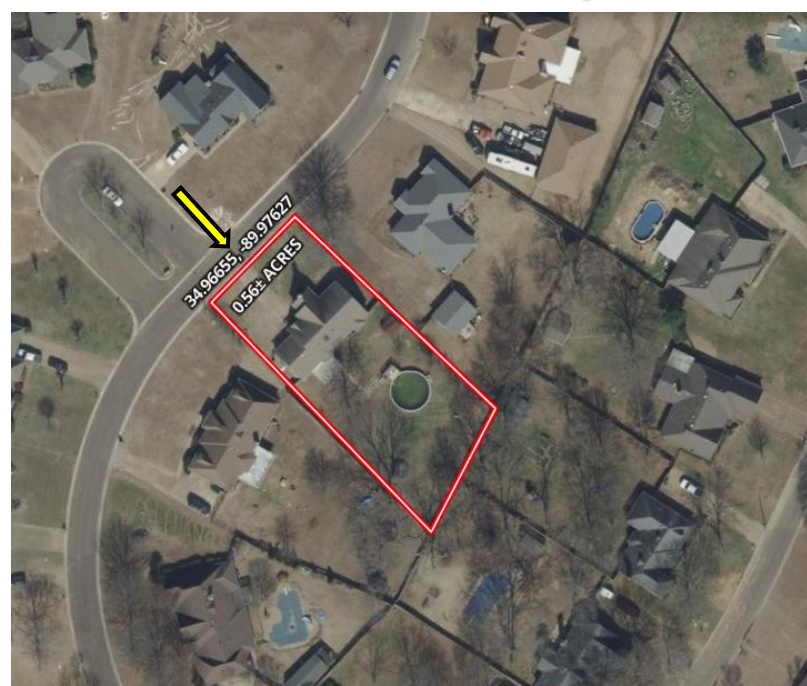
TomSmithLandandHomes.com



Expect More. Get More.



Information is believed to be accurate but not guaranteed.

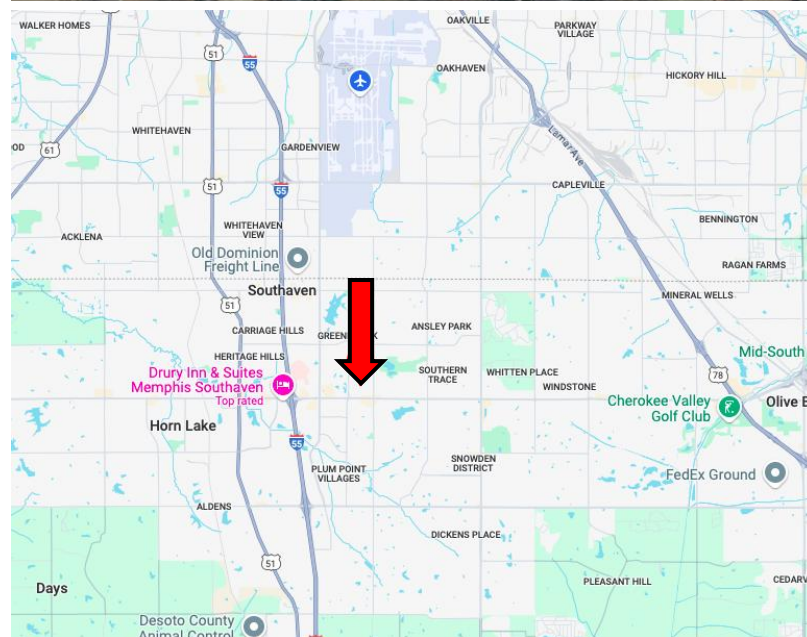


Address: 7264 Flower Creek Drive
Southaven, MS 38671

**Directions from I-69 and
Goodman Rd W, Horn Lake, MS:**

Travel east on Goodman Rd W for 1.3 miles. Turn left onto Flower Creek Drive. After 0.3 miles, the home will be on the right.

[Google Maps Link](#)



**ANTHONY
STEEN**

REALTOR®

Office: 601.898.2772

Cell: 662.645.5151

Anthony@TomSmithLand.com



Expect More. Get More.

A Real Estate Expert You Can Trust

TomSmithLandandHomes.com